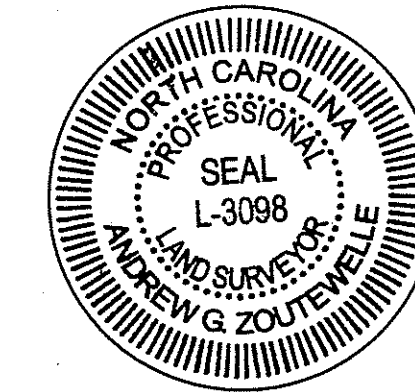
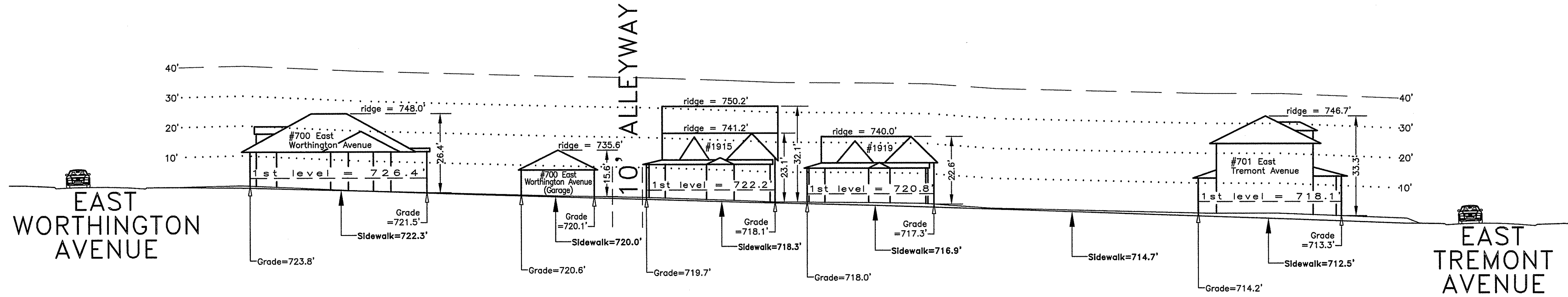


I hereby certify that this schematic drawing was prepared based on field-surveyed elevation measurements of the points shown hereon. This map is not intended to meet G.S. 47-30 recording requirements.

This 2nd day of May, 2017.



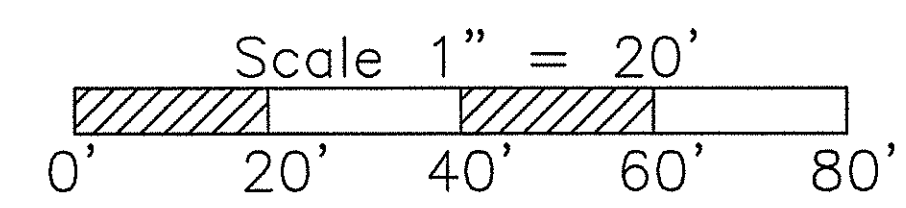
A.G.Z.
 Andrew G. Zoutewelle
 Professional Land Surveyor
 NC License No. L-3098



S P R I N G D A L E A V E N U E

A.G. ZOUTEWELLE
SURVEYORS
 1418 East Fifth St. Charlotte, NC 28204
 Phone: 704-372-9444 Fax: 704-372-9555
 Firm Licensure Number C-1054

Copyright 2017
 Building Heights Sketch of
1900 BLOCK of SPRINGDALE AVENUE
FACING SOUTHEAST - ODD SIDE
 CHARLOTTE, MECKLENBURG COUNTY, N.C.
 for Charlotte-Mecklenburg Planning Department
 April 25, 2017



General Notes:
 1. The purpose of this Building Heights Sketch is to show existing building facade heights relative to the elevation points at the public sidewalk or top of curb, front yard grade ("Grade"), 1st level, and ridgeline of the houses depicted hereon. No rearyard or sideyard measurements were made. The heights shown hereon were derived from indirect measurements and are not intended for structural design.
 2. The vertical datum for these elevation measurements is the North American Vertical Datum of 1988 (i.e., sea level). All other information and graphics are conceptual in nature and are not intended to represent accurate architectural or landscape features.