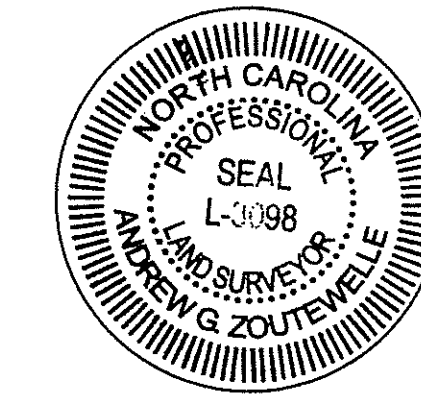
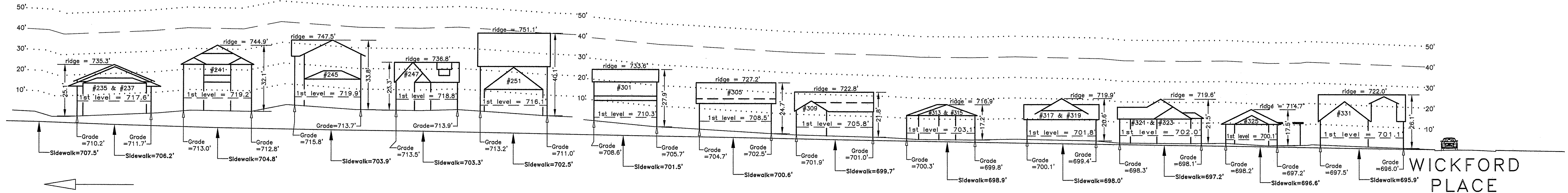


I hereby certify that this schematic drawing was prepared based on field-surveyed elevation measurements of the points shown hereon. This map is not intended to meet G.S. 47-30 recording requirements.

This 5<sup>th</sup> day of December, 2016.



*A.G.Z.*  
 Andrew G. Zoutewelle  
 Professional Land Surveyor  
 NC License No. L-3098



←  
 To SOUTH  
 TRYON STREET

WEST KINGSTON AVENUE

**A.G. ZOUTEWELLE**  
**SURVEYORS**  
 1418 East Fifth St. Charlotte, NC 28204  
 Phone: 704-372-9444 Fax: 704-372-9555  
 Firm Licensure Number C-1054

Copyright 2016  
 Building Heights Sketch of  
**237-331 WEST KINGSTON AVENUE**  
**FACING SOUTHWEST**  
 CHARLOTTE, MECKLENBURG COUNTY, N.C.  
 for Charlotte-Mecklenburg Planning Department  
 November 23, 2016

General Notes:  
 1. The purpose of this Building Heights Sketch is to show existing building facade heights relative to the elevation points at the public sidewalk or top of curb, front yard grade ("Grade"), 1st level, and ridgeline of the houses depicted hereon. No rearyard or sideyard measurements were made. The heights shown hereon were derived from indirect measurements and are not intended for structural design.  
 2. The vertical datum for these elevation measurements is the North American Vertical Datum of 1988 (i.e., sea level). All other information and graphics are conceptual in nature and are not intended to represent accurate architectural or landscape features.

