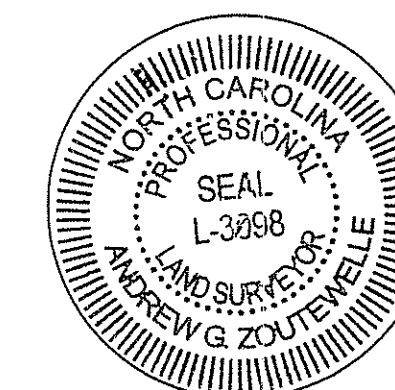
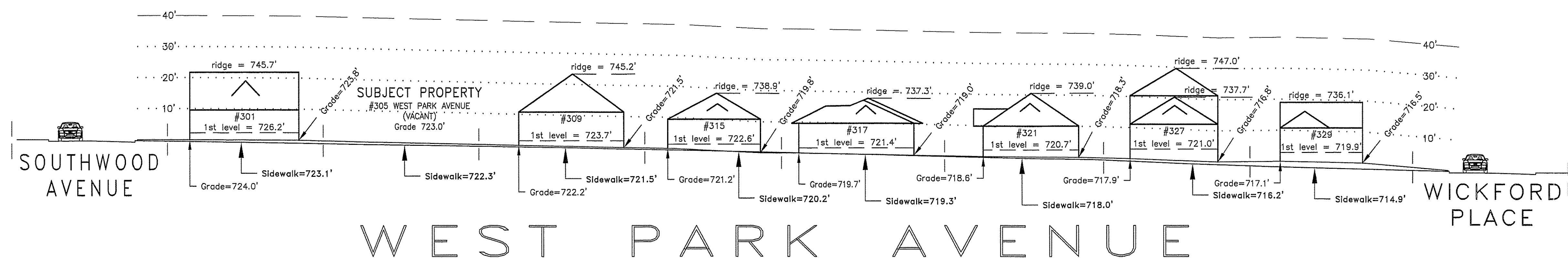


I hereby certify that this schematic drawing was prepared based on field-surveyed elevation measurements of the points shown hereon. This map is not intended to meet G.S. 47-30 recording requirements.

This 16<sup>th</sup> day of May, 2014.

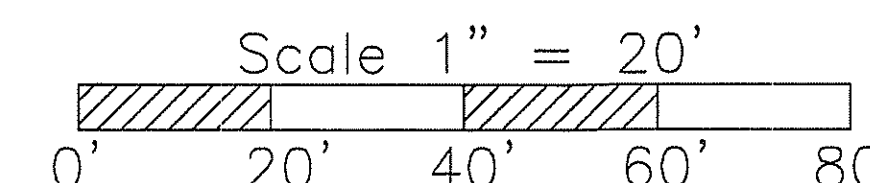


*A.G.Z.*  
 Andrew G. Zoutewelle  
 Professional Land Surveyor  
 NC License No. L-3098



**A.G. ZOUTEWELLE**  
**SURVEYORS**  
 1418 East Fifth St. Charlotte, NC 28204  
 Phone: 704-372-9444 Fax: 704-372-9555  
 Firm Licensure Number C-1054

Copyright 2014  
 Building Heights Sketch of  
**300 BLOCK of WEST PARK AVENUE**  
 FACING SOUTHWEST  
 CHARLOTTE, MECKLENBURG COUNTY, N.C.  
 for Charlotte-Mecklenburg Planning Department  
 May 07, 2014



General Notes:  
 1. The purpose of this Building Heights Sketch is to show existing building facade heights relative to the elevation points at the public sidewalk, front yard grade ("Grade"), 1st level, and ridgeline of the houses depicted hereon. No rearyard or sideyard measurements were made. The heights shown hereon were derived from indirect measurements and are not intended for structural design.  
 2. The vertical datum for these elevation measurements is the North American Vertical Datum of 1988 (i.e., sea level). All other information and graphics are conceptual in nature and are not intended to represent accurate architectural or landscape features.