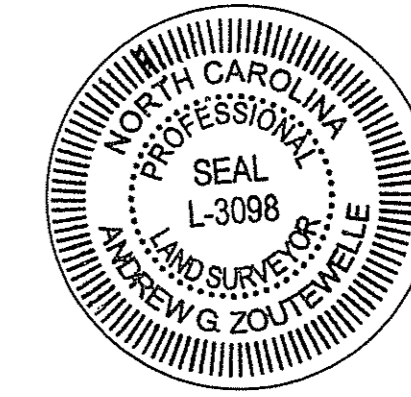
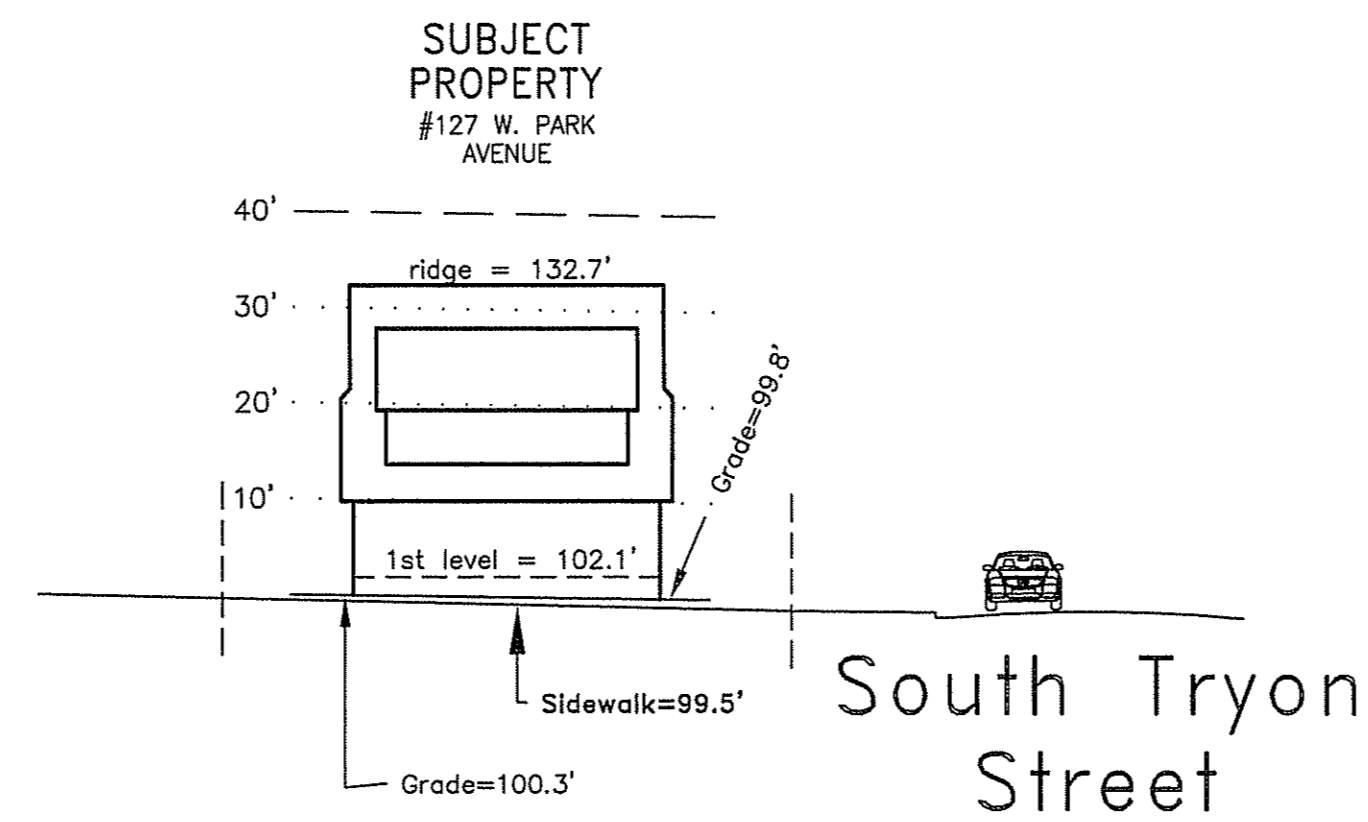


I hereby certify that this schematic drawing was prepared based on field-surveyed elevation measurements of the points shown hereon. This map is not intended to meet G.S. 47-30 recording requirements.

This 25th day of June, 2014.



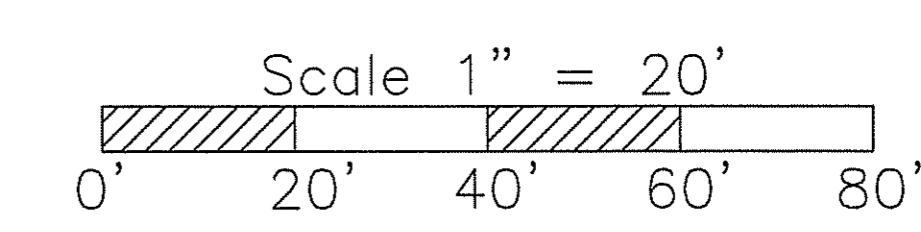
Andrew G. Zoutewelle
Andrew G. Zoutewelle
Professional Land Surveyor
NC License No. L-3098



West Park Avenue

A.G. ZOUTEWELLE
SURVEYORS
1418 East Fifth St. Charlotte, NC 28204
Phone: 704-372-9444 Fax: 704-372-9555
Firm Licensure Number C-1054

Copyright 2014
Building Height Sketch of
127 West Park Avenue
FACING SOUTH
CHARLOTTE, MECKLENBURG COUNTY, N.C.
for Charlotte-Mecklenburg Planning Department
June 24, 2014



General Notes:
1. The purpose of this Building Heights Sketch is to show existing building facade heights relative to the elevation points at the public sidewalk, front yard grade ("Grade"), 1st level, and ridgeline of the houses depicted hereon. No rearyard or sideyard measurements were made. The heights shown hereon were derived from indirect measurements and are not intended for structural design.
2. The vertical datum for these elevation measurements is an assumed datum (i.e., not related to sea level). All other information and graphics are conceptual in nature and are not intended to represent accurate architectural or landscape features.