

PHYSICAL SURVEY  
for the  
**ZAYRE CORP.**  
PROPERTY OF  
SHOPPING CENTERS DEVELOPERS, INC.

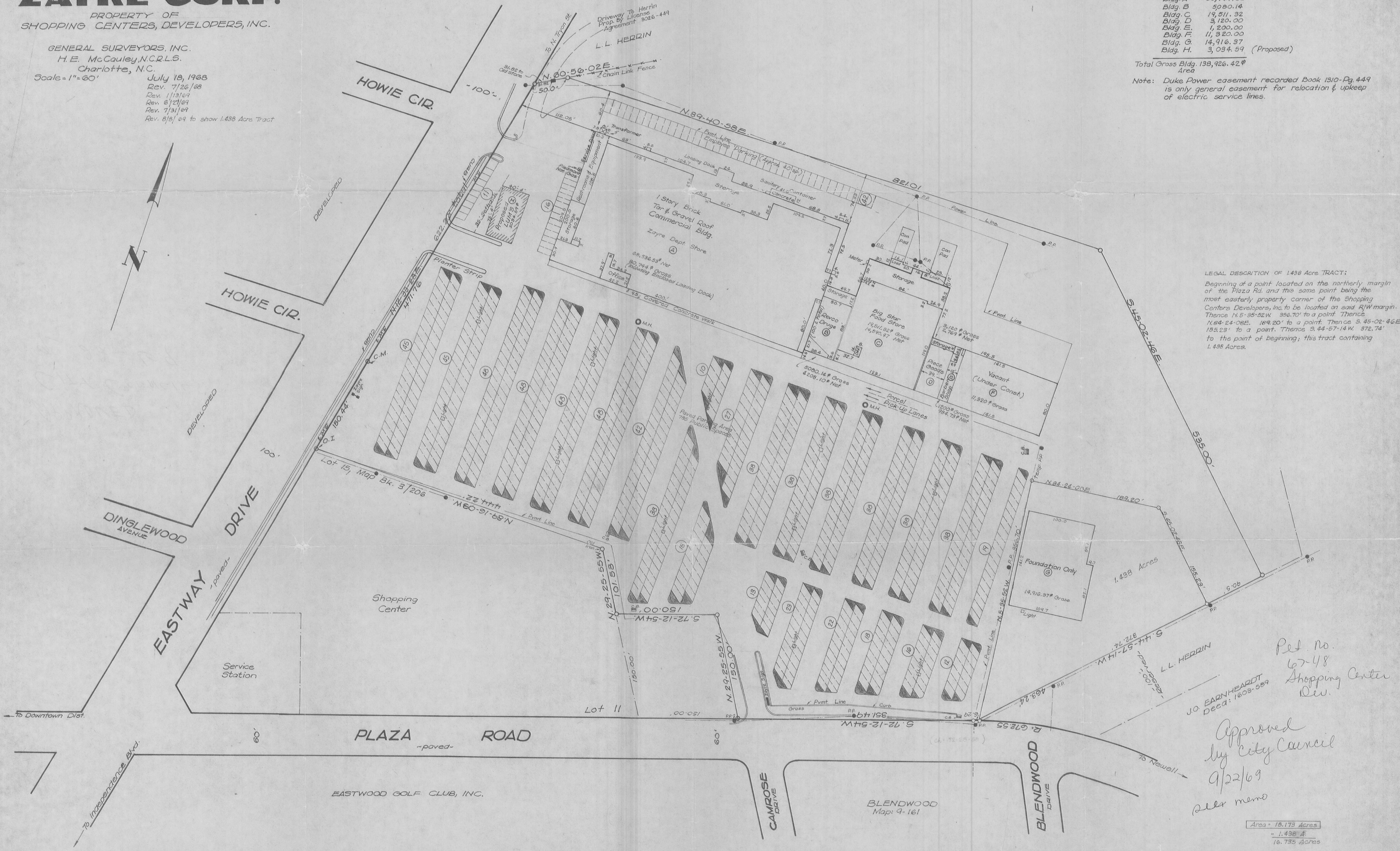
GENERAL SURVEYORS, INC.  
H. E. McCauley, N.C.R.L.S.  
Charlotte, N.C.  
July 18, 1968  
Rev. 7/26/68  
Rev. 1/13/69  
Rev. 6/27/69  
Rev. 7/31/69  
Rev. 8/15/69 to show 1.438 Acre Tract

785 Public Pkg. Spaces  
Ratio: 1<sup>st</sup> of bldg. area to  
3.02<sup>d</sup> of parking area (public) 1:3.02

Notes:

	Gross Sq. Ft.
Bldg. A	80,744.00
Bldg. B	50,800.14
Bldg. C	14,571.32
Bldg. D	3,120.00
Bldg. E	1,200.00
Bldg. F	11,320.00
Bldg. G	14,916.37
Bldg. H	3,034.59 (Proposed)

Total Gross Bldg. 138,926.42<sup>#</sup>  
Area  
Note: Duke Power easement recorded Book 1310-Pg. 449  
is only general easement for relocation & upkeep  
of electric service lines.



LEGAL DESCRIPTION OF 1.438 Acre TRACT:  
Beginning at a point located on the northerly margin  
of the Plaza Rd. and this same point being the  
most easterly property corner of the Shopping  
Centers Developers, Inc. to be located on said R/W margin.  
Thence N. 5-35-52W. 356.70' to a point Thence  
N. 64-24-08E. 169.20' to a point Thence S. 45-02-46E.  
153.23' to a point Thence S. 44-57-14W. 372.74'  
to the point of beginning; this tract containing  
1.438 Acres.

Plat No.  
67-48  
Shopping Center  
Dev.

Approved  
by City Council  
9/22/69  
See memo

Area = 18.173 Acres  
- 1.438 A  
16.735 Acres