

2,300/3,400  
 1/4  
 1/4  
 3,000/3,400  
 1/4  
 1/4  
 3,000/3,400  
 1/4  
 1/4  
 3,000/3,400  
 1/4  
 1/4

H/O from MIC. HUDSON WITH BENTON/HOBSON  
 TOTAL SEATS 7600  
 # BANK 2100  
 # RETAIL SEATS 3300  
 # OFFICE 2300  
 TOTAL EMPLOYEES 3100  
 SEATING 2250  
 1902 SEATS RECD.  
 1902 SEATS SHOWN  
 OK 9/5/70 RD

UNC-C

### SITE PLAN



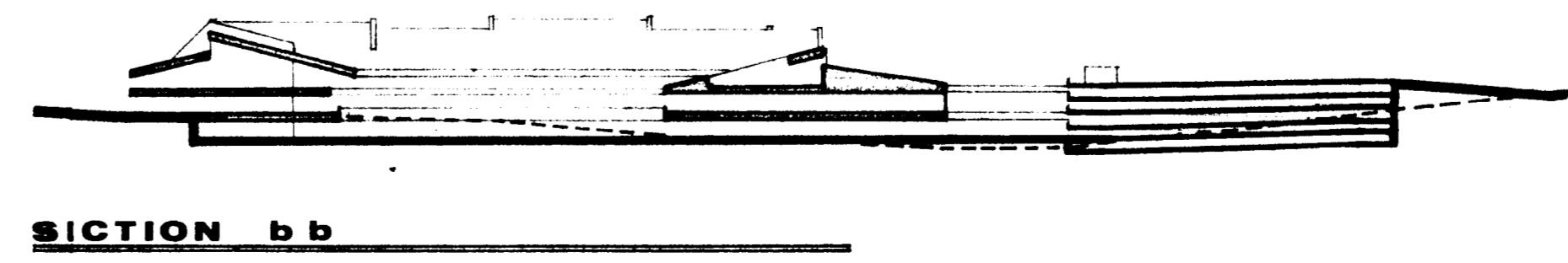
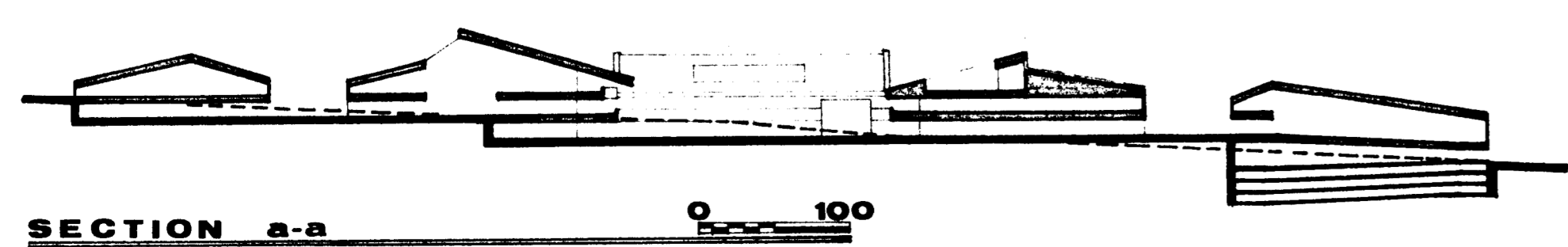
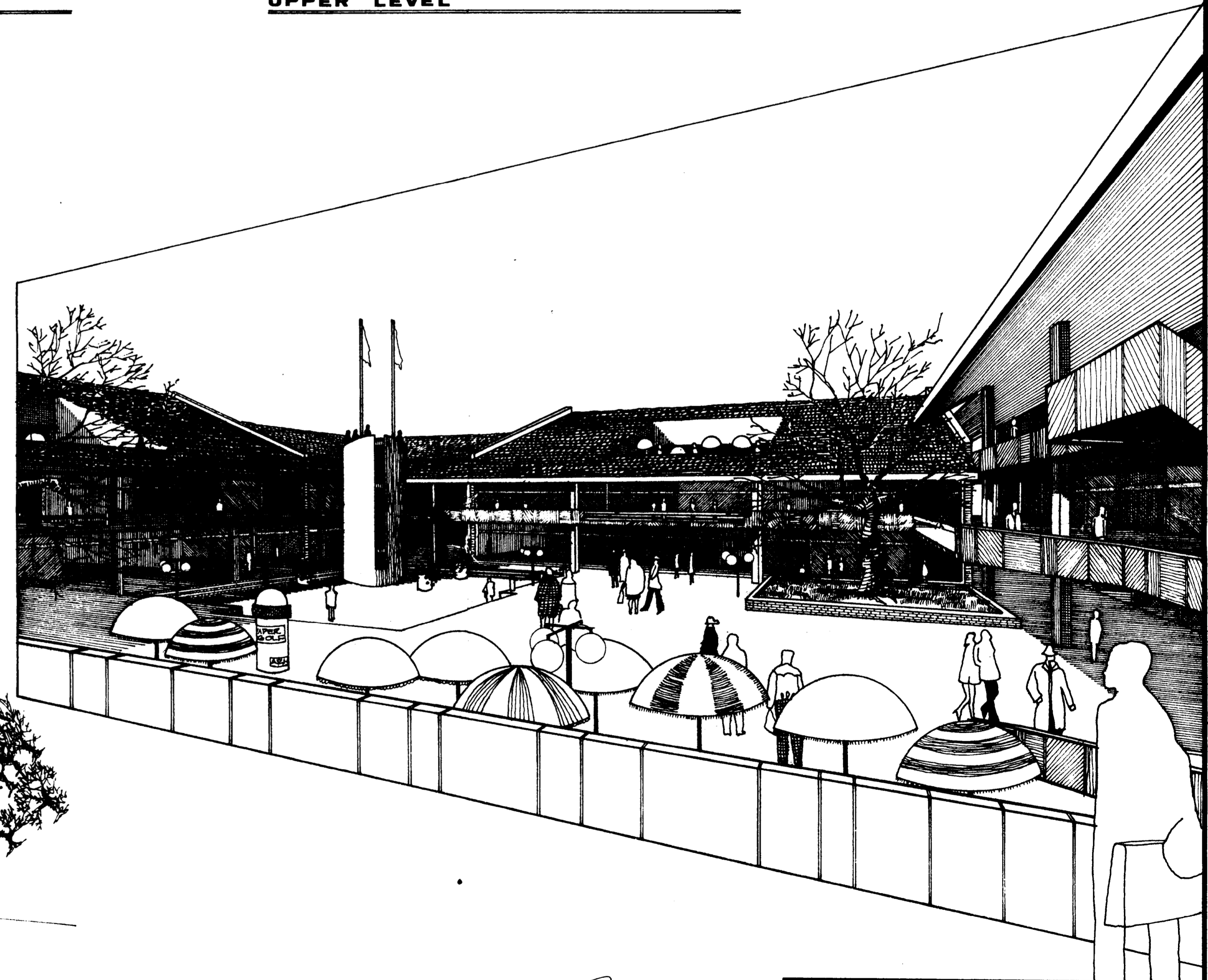
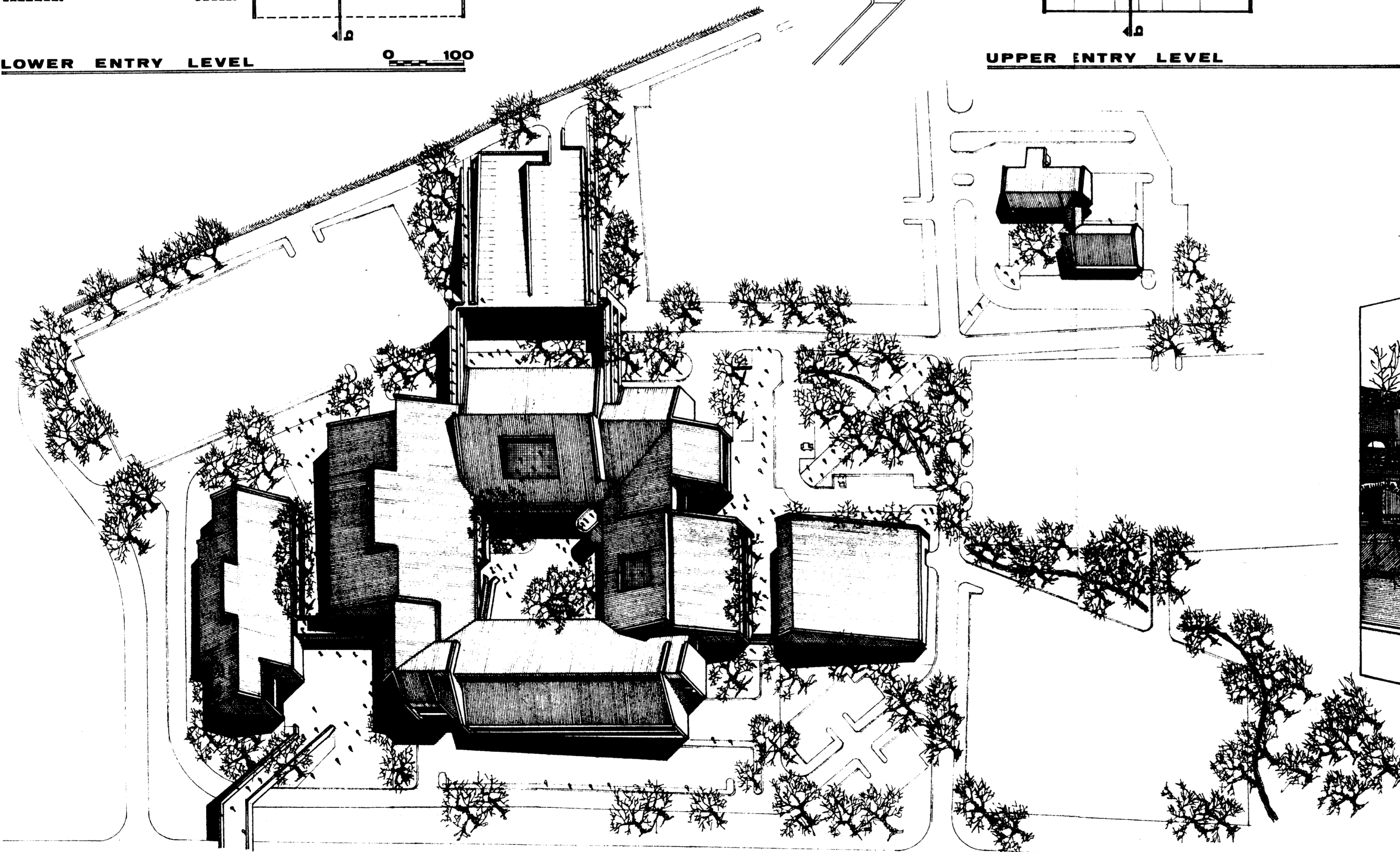
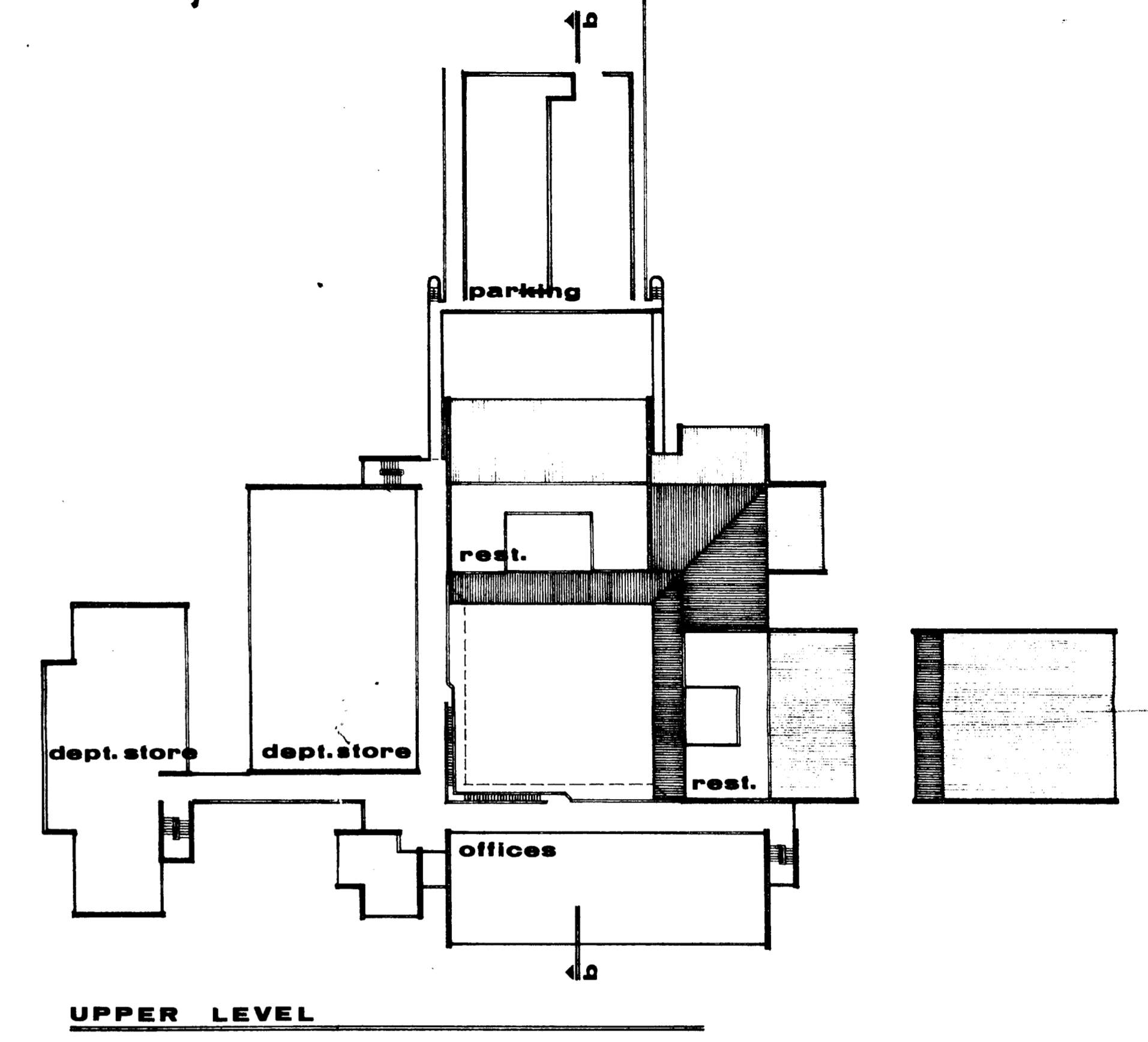
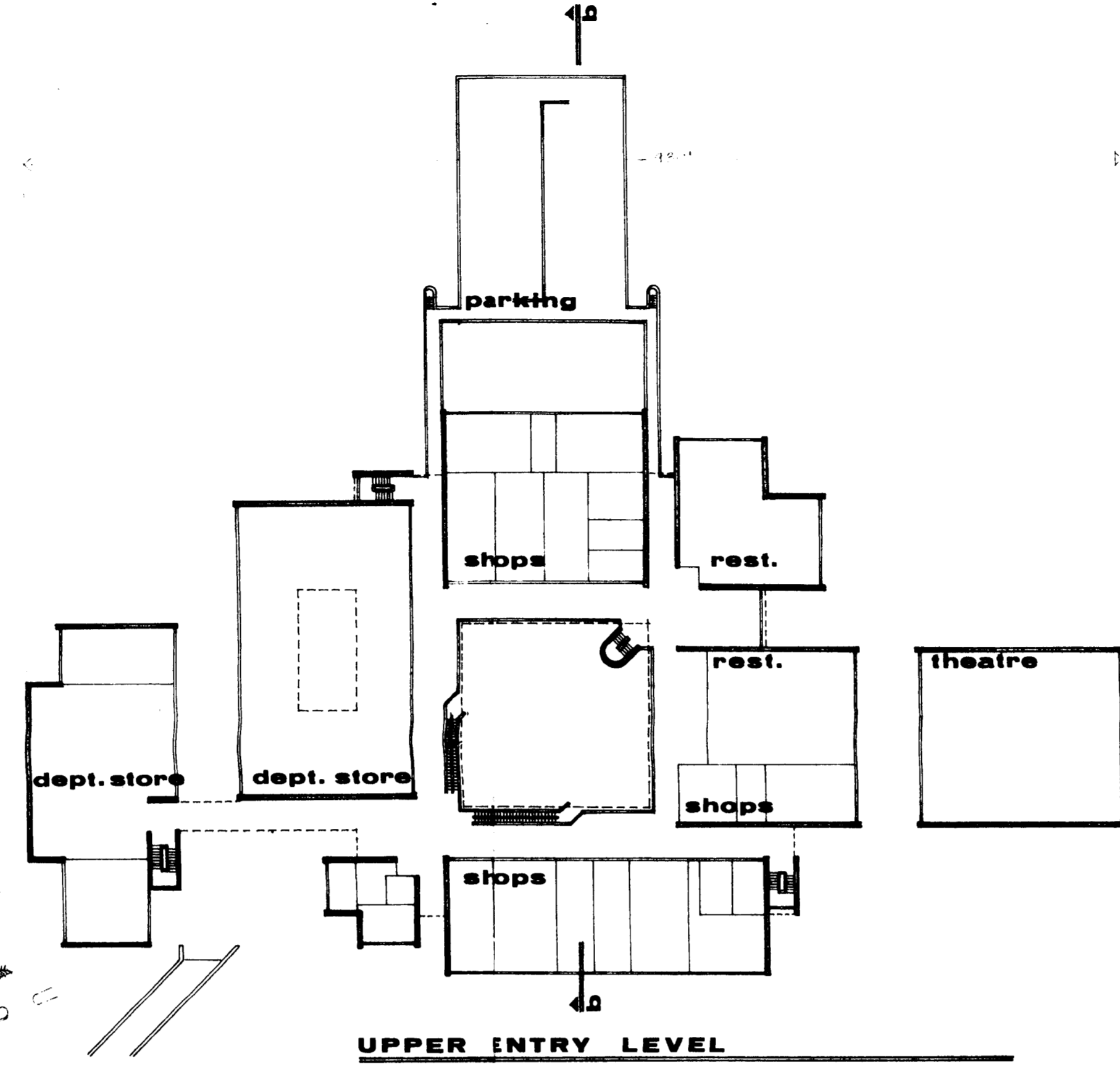
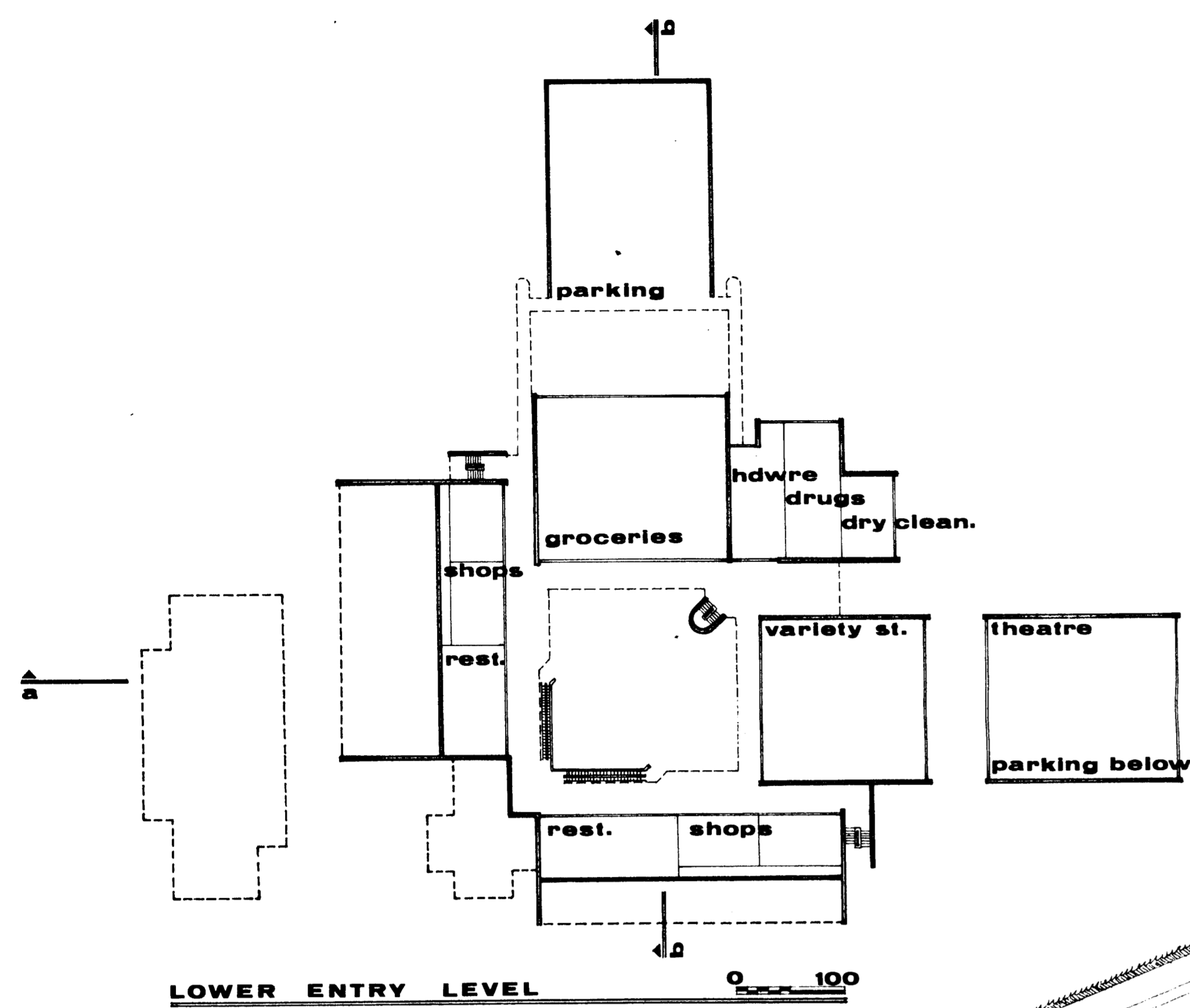
land area	34.799 acres
leasable area	4(9,000 sq.ft. ±
gross building area	5(9,000 sq.ft. ±
total parking spaces	2180 spaces
s-service areas	

700-111  
 Construction Co  
 Bruck & Zelle

This plan has been replaced  
 by one approved by Co. Comm.  
 on 10/20/80, filed under  
 University City Property, Inc.  
 (Pet. # 80-260)

**TOWN CENTER** of  
 UNIVERSITY CITY, CHARLOTTE, N.C.  
 for  
 CONSTRUCTION BRICK and TILE CO.

DRAWN BY: <b>b h</b>	<b>BENTON and HOBSON</b> ARCHITECTS	JOB NO. <b>694</b>
CHECKED BY: <b>J b</b>		SHEET
DATE: 10 JULY 70	POST OFFICE BOX 4362 CHARLOTTE, N. C. 28204	<b>1</b> OF <b>2</b>



7B-111  
Construction  
Brick + Tile

**TOWN CENTER** of  
UNIVERSITY CITY, CHARLOTTE N.C.  
for  
CONSTRUCTION BRICK and TILE CO.

DRAWN BY: b h	<b>BENTON and HOBSON</b> ARCHITECTS POST OFFICE BOX 4362 CHARLOTTE, N. C. 28204	JOB NO. 682
CHECKED BY: l b		SHEET 2
DATE: 10 JULY '60		OF 2