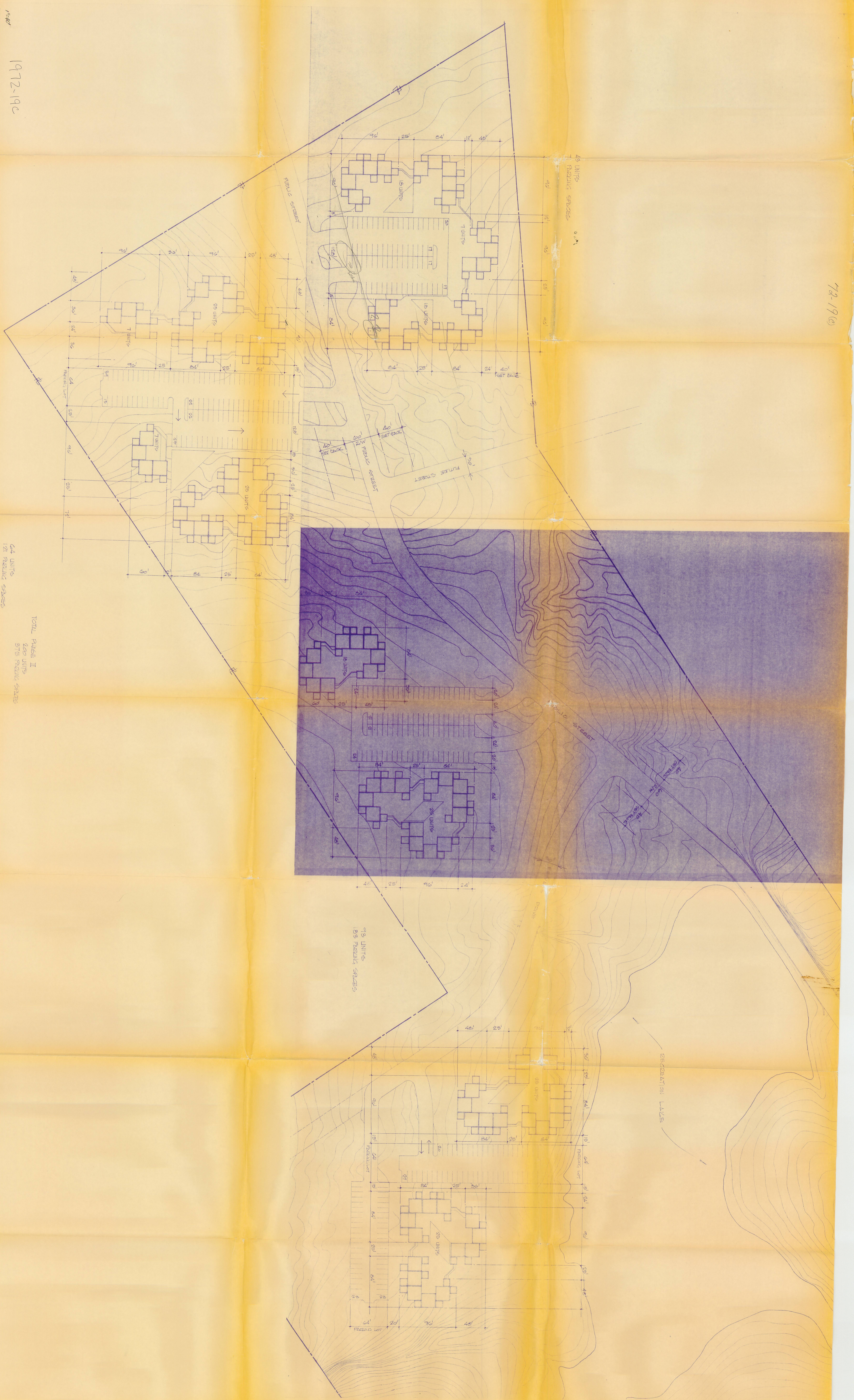


1/8"=1'-0"
 1972-19c

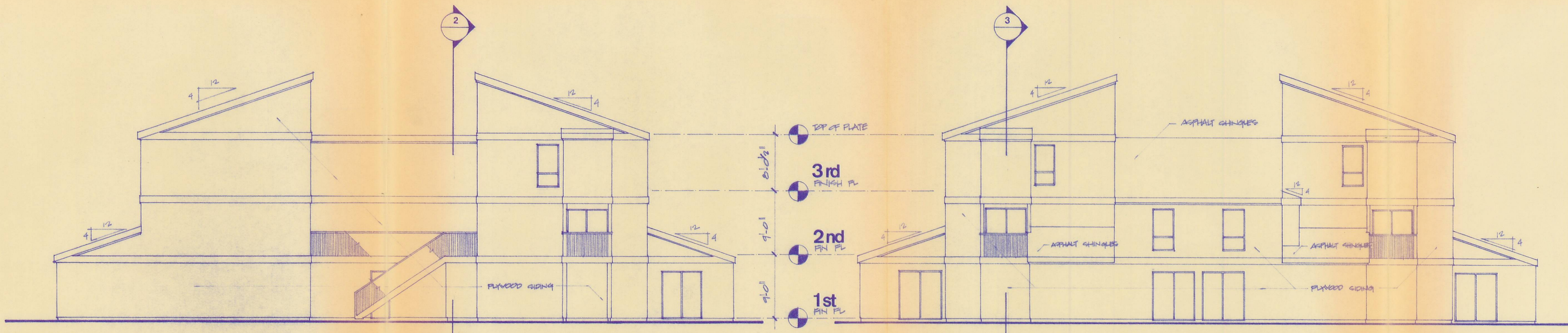
72-19c



48 UNITS
 171 PARKING SPACES

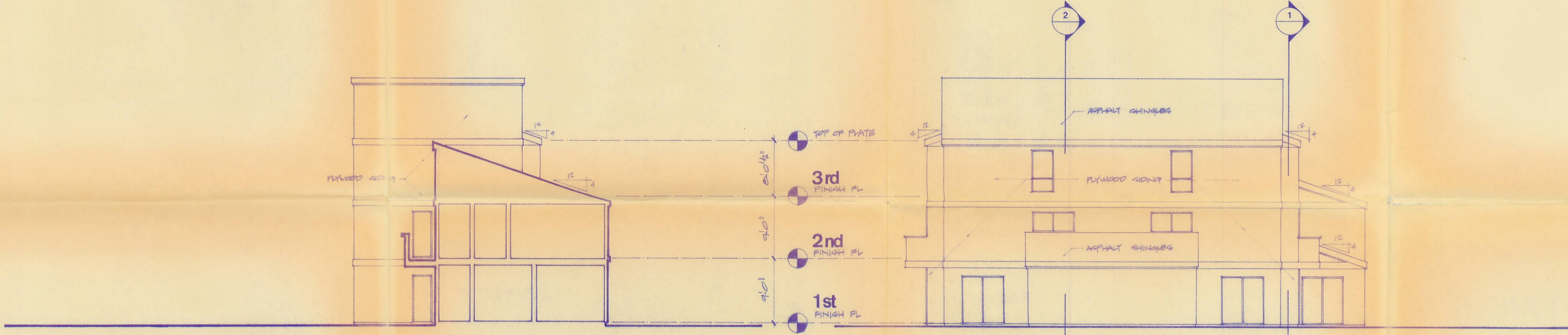
93 UNITS
 125 PARKING SPACES

TOTAL PHASE II
 266 UNITS
 378 PARKING SPACES



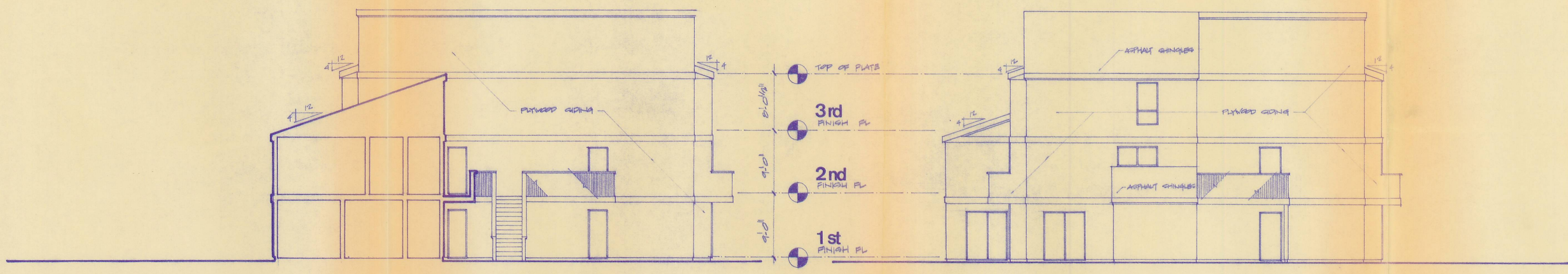
1

2



3

4



5

6

| | |
|--------------------|--|
| Date | |
| Revisions | |
| Elevations | |
| Bldg Type B | |
| Job Number | |
| SET #1 | |
| Sheet Number | |