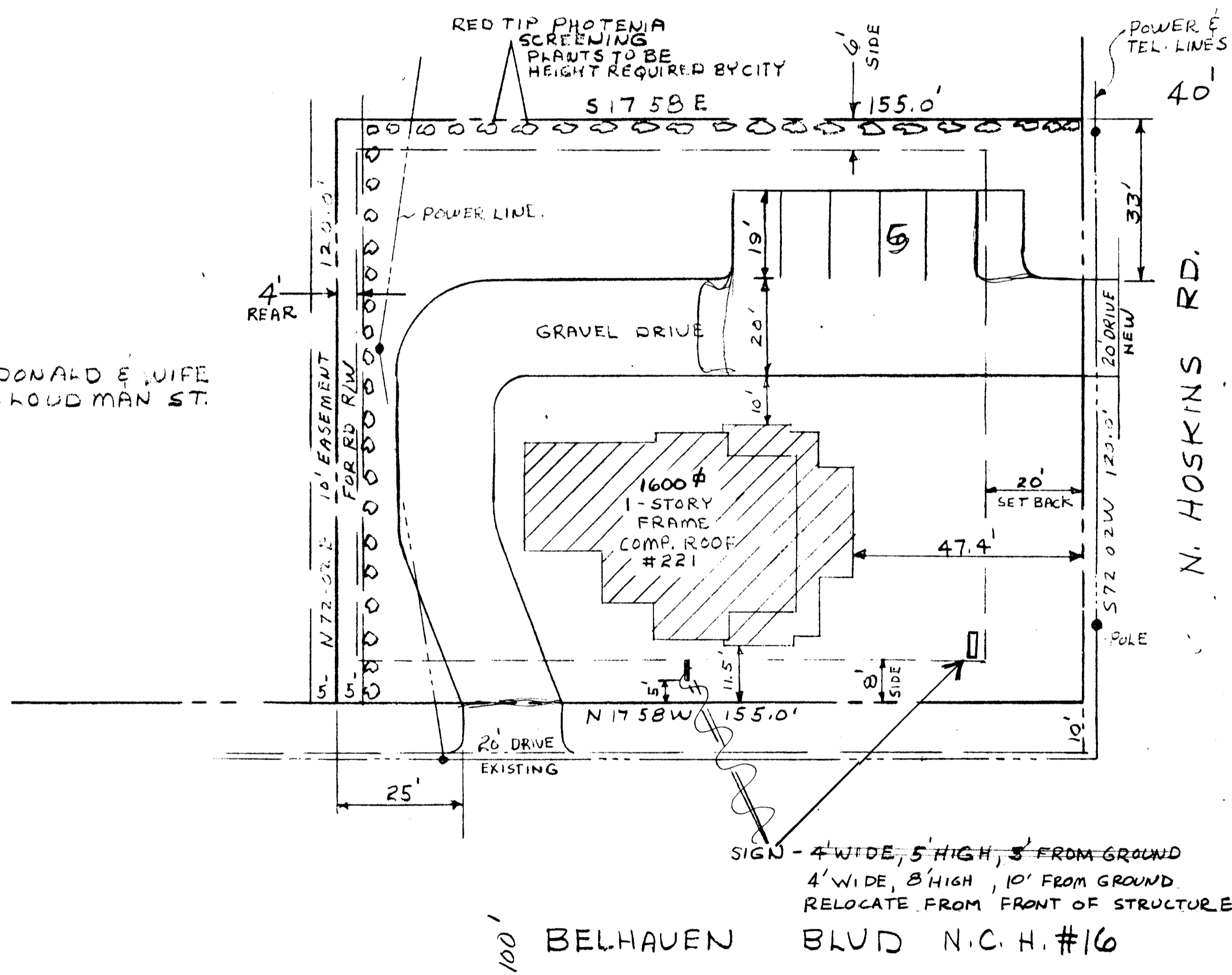


CHARLES B. THROWER & WIFE
227 N. HOSKINS RD.

COY E. DONALD & WIFE
202 N. CLOUDMAN ST.



GEORGE R. ABERNETHY, TRUSTEE
230 N. HOSKINS AVE.

SITE PLAN

SCALE: 1" = 20'-0"

APPROVED 9-8-78
EFY - T.E.D.

FROM R-6 MF

TO

O-6 CD

0.43 ACRES

MRS. BEULAH SMITH
130 N. CLOUDMAN ST.

MRS. FANNIE LEE KEISTLER
400 N. HOSKINS RD.

JAMES T. YARBOROUGH
1031 OAKDALE RD.

PETITION 78-42

From R-6 MF to O-6 (CD) for
real estate office use

Approved 10/30/78 by Council
Administrative Revision pertaining to sign 3/30/79

SCALE		DRAWN BY	
		REVISED	
DATE	APPROVED BY	DRAWING NUMBER	