

GYMNASIUM ADDITION

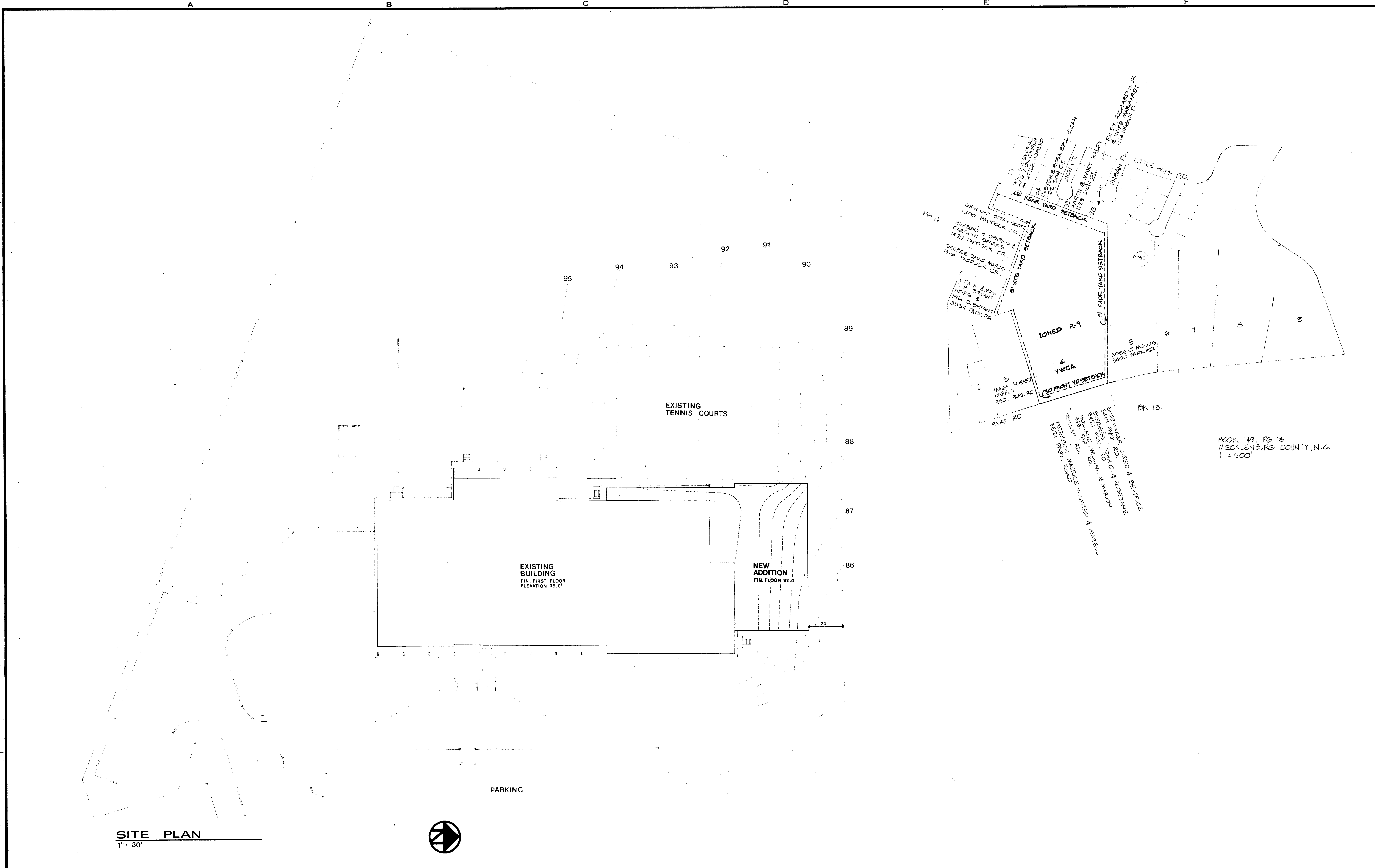
CHARLOTTE, NORTH CAROLINA

PRELIMINARY DESIGN

J. N. PEASE ASSOCIATES

ELEV. of Block & FLOOR PLAN.

1976-04



SITE PLAN
1" = 30'

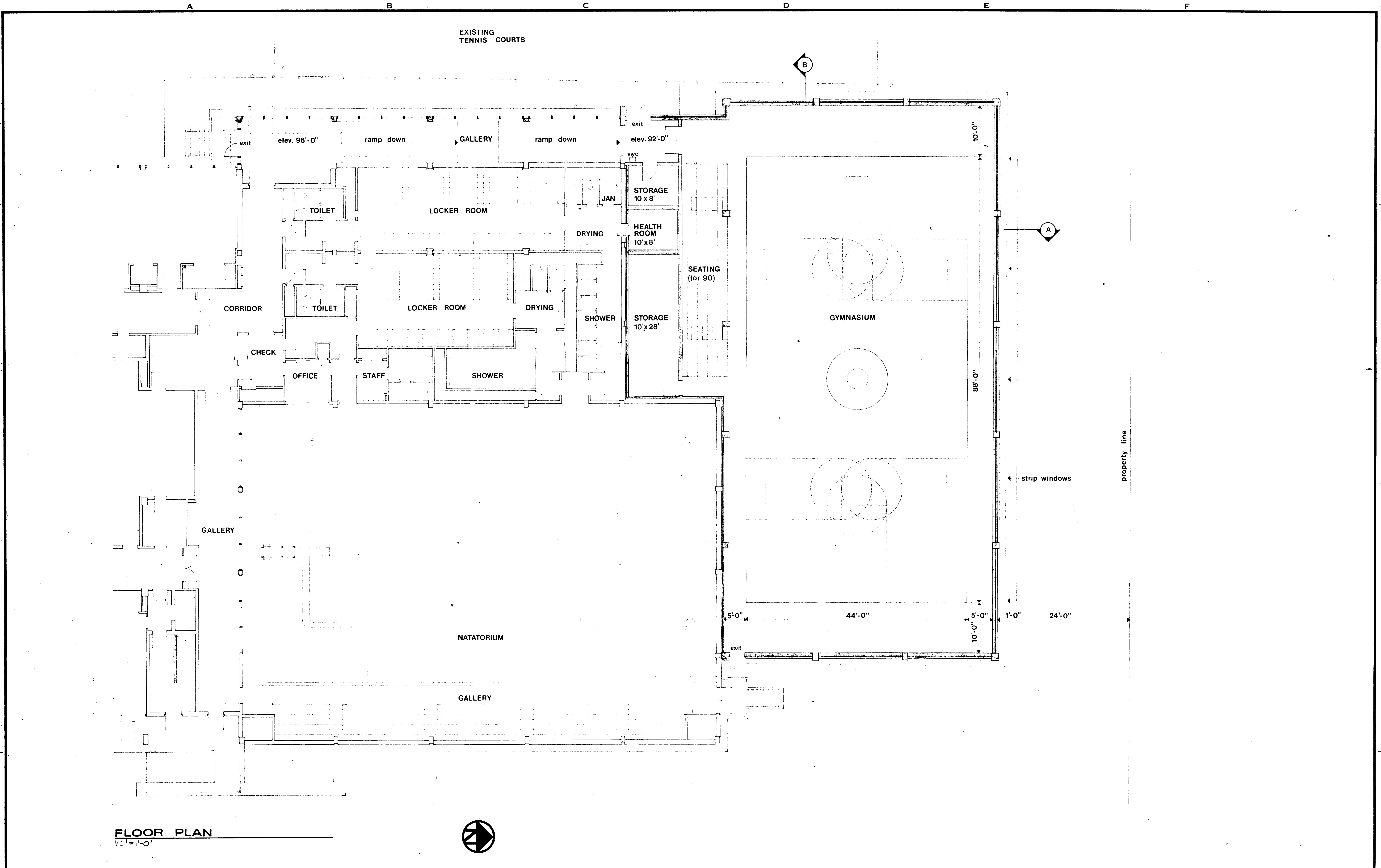
PROJECT ARCHITECT	G. L. PEASE, AIA
DATE	7-14-75
BY	G. L. PEASE, AIA
FOR	Y.W.C.A.

J. N. PEASE ASSOCIATES
ARCHITECTS · ENGINEERS · PLANNERS
BOX 12725 · CHARLOTTE, N. C. 28205 · 2925 EAST INDEPENDENCE BLVD.

PRELIMINARY SITE PLAN

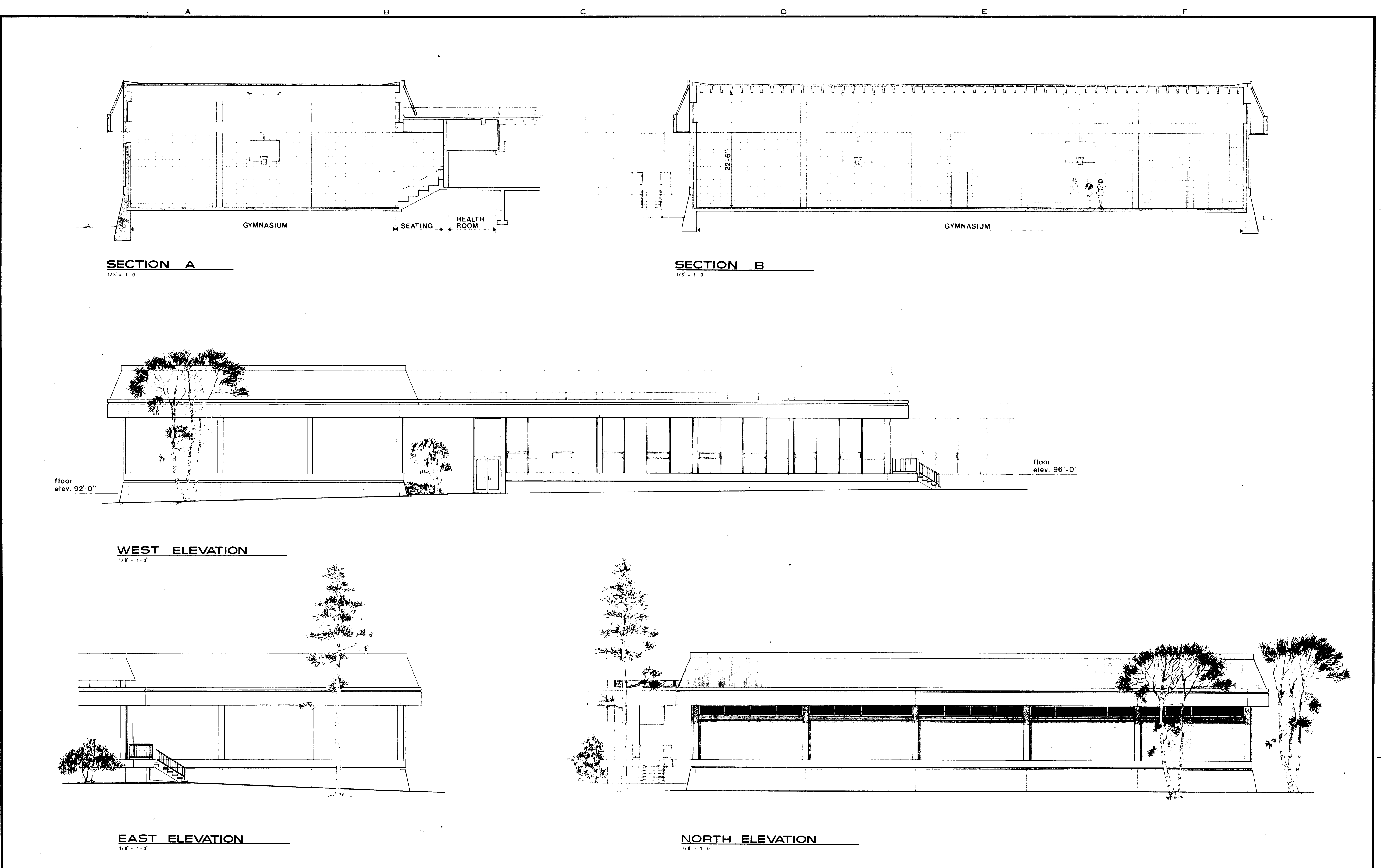
YWCA GYMNASIUM ADDITION
CHARLOTTE, NORTH CAROLINA

ARCHITECTURAL
SHEET NUMBER
SKA-1
TOTAL
4496



FLOOR PLAN
1/2" = 1'-0"

PROJECT: YWCA GYMNASIUM ADDITION ARCHITECT: J. N. PEASE ASSOCIATES DATE: 2/26/88 DRAWN BY: G. L. PETERS, A.A. CHECKED BY: G. L. PETERS, A.A. TITLE: PRELIMINARY FLOOR PLAN	J. N. PEASE ASSOCIATES ARCHITECTS · ENGINEERS · PLANNERS BOX 12725 · CHARLOTTE, N. C. 28205 · 2925 EAST INDEPENDENCE BLVD.	PRELIMINARY FLOOR PLAN YWCA GYMNASIUM ADDITION CHARLOTTE, NORTH CAROLINA	ARCHITECTURAL SHEET NUMBER SKA-2
			OF 3 TOTAL COMMISSION NUMBER 4496



SECTION A
1/4" = 1'-0"

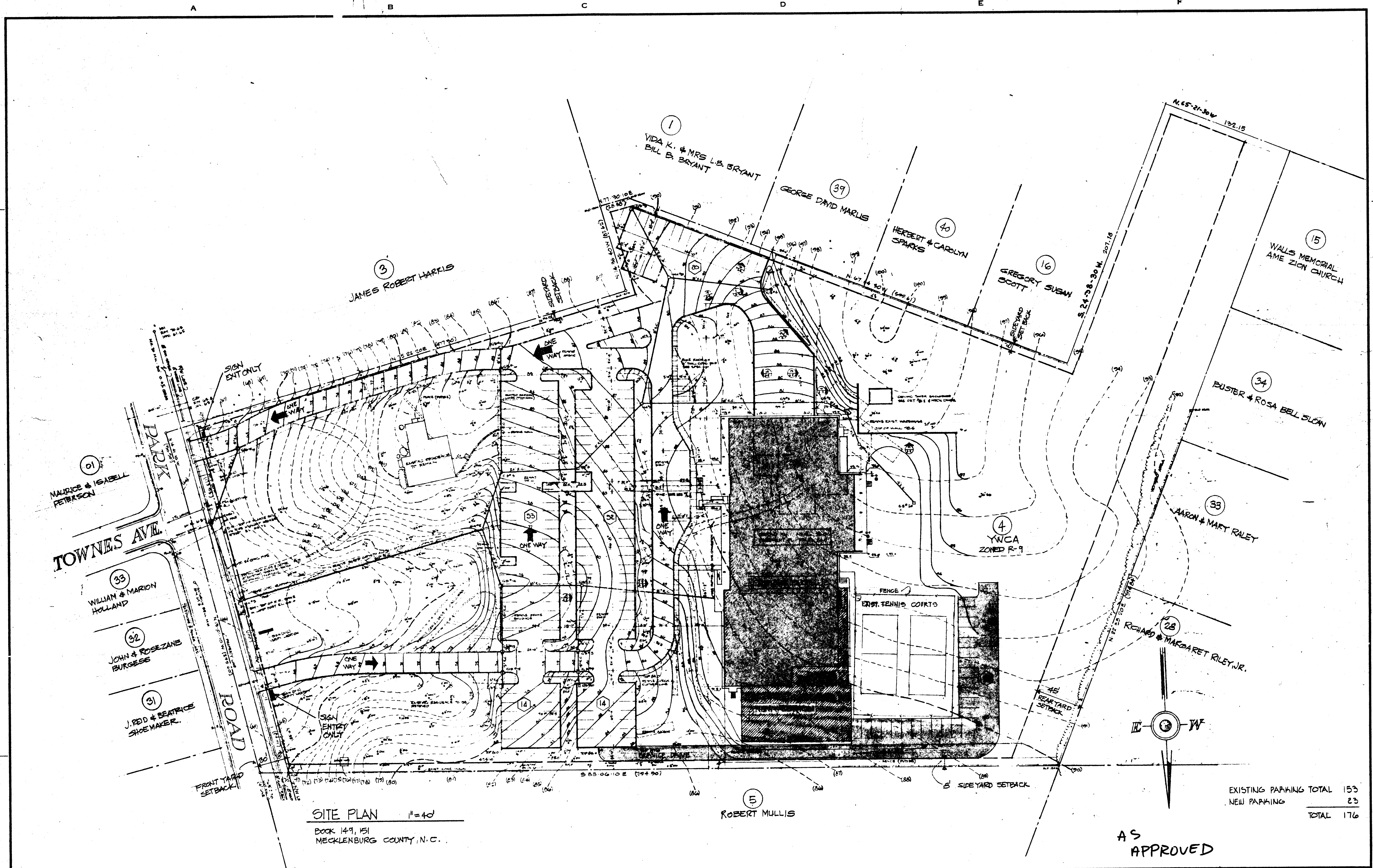
SECTION B
1/4" = 1'-0"

WEST ELEVATION
1/4" = 1'-0"

EAST ELEVATION
1/4" = 1'-0"

NORTH ELEVATION
1/4" = 1'-0"

PROJECT: YWCA GYMNASIUM ADDITION ARCHITECT: J. N. PEASE ASSOCIATES DATE: 2/26/88 DRAWN BY: G. L. PETERS, A.A. CHECKED BY: G. L. PETERS, A.A. TITLE: PRELIMINARY SECTIONS & ELEVATIONS	J. N. PEASE ASSOCIATES ARCHITECTS · ENGINEERS · PLANNERS BOX 12725 · CHARLOTTE, N. C. 28205 · 2925 EAST INDEPENDENCE BLVD.	PRELIMINARY SECTIONS & ELEVATIONS YWCA GYMNASIUM ADDITION CHARLOTTE, NORTH CAROLINA	ARCHITECTURAL SHEET NUMBER SKA-3
			OF 3 TOTAL COMMISSION NUMBER 4496



SITE PLAN 1"=40'
 BOOK 149, 151
 MECKLENBURG COUNTY, N.C.

EXISTING PARKING TOTAL 153
 NEW PARKING 23
 TOTAL 176

AS
 APPROVED

DATE	1975
REVISIONS	2-6-76

J. N. PEASE ASSOCIATES
 ARCHITECTS · ENGINEERS · PLANNERS
 BOX 12725 · CHARLOTTE, N. C. 28205 · 2925 EAST INDEPENDENCE BLVD.

PRELIMINARY · SITE PLAN
YWCA GYMNASIUM ADDITION
 CHARLOTTE, NORTH CAROLINA

ARCHITECTURAL
 SHEET NUMBER
A-4
 OF TOTAL
 COMMISSION NUMBER
 4499