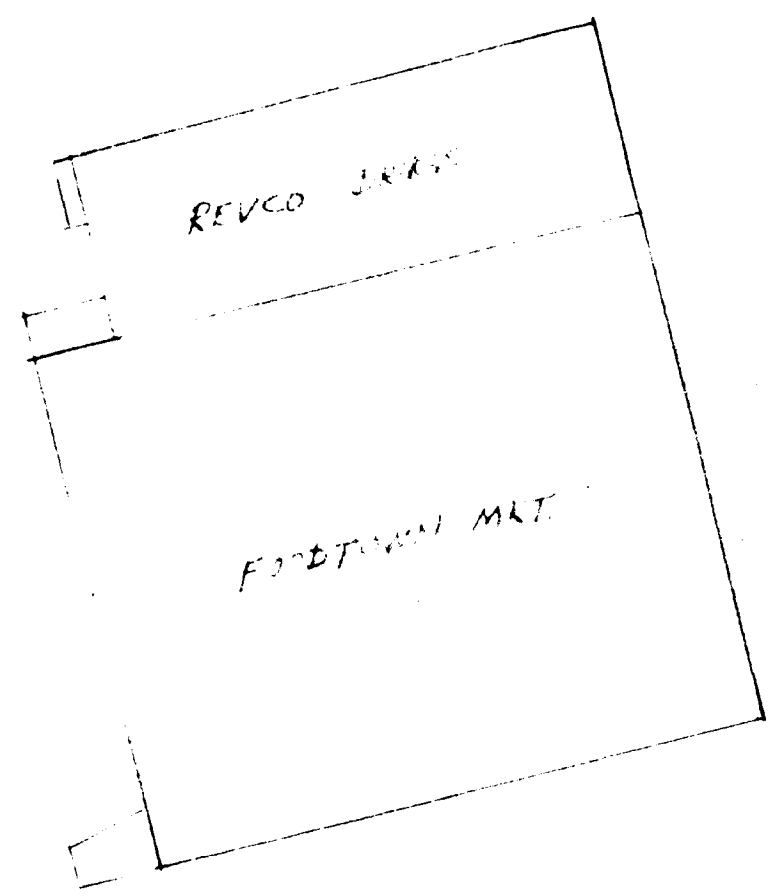
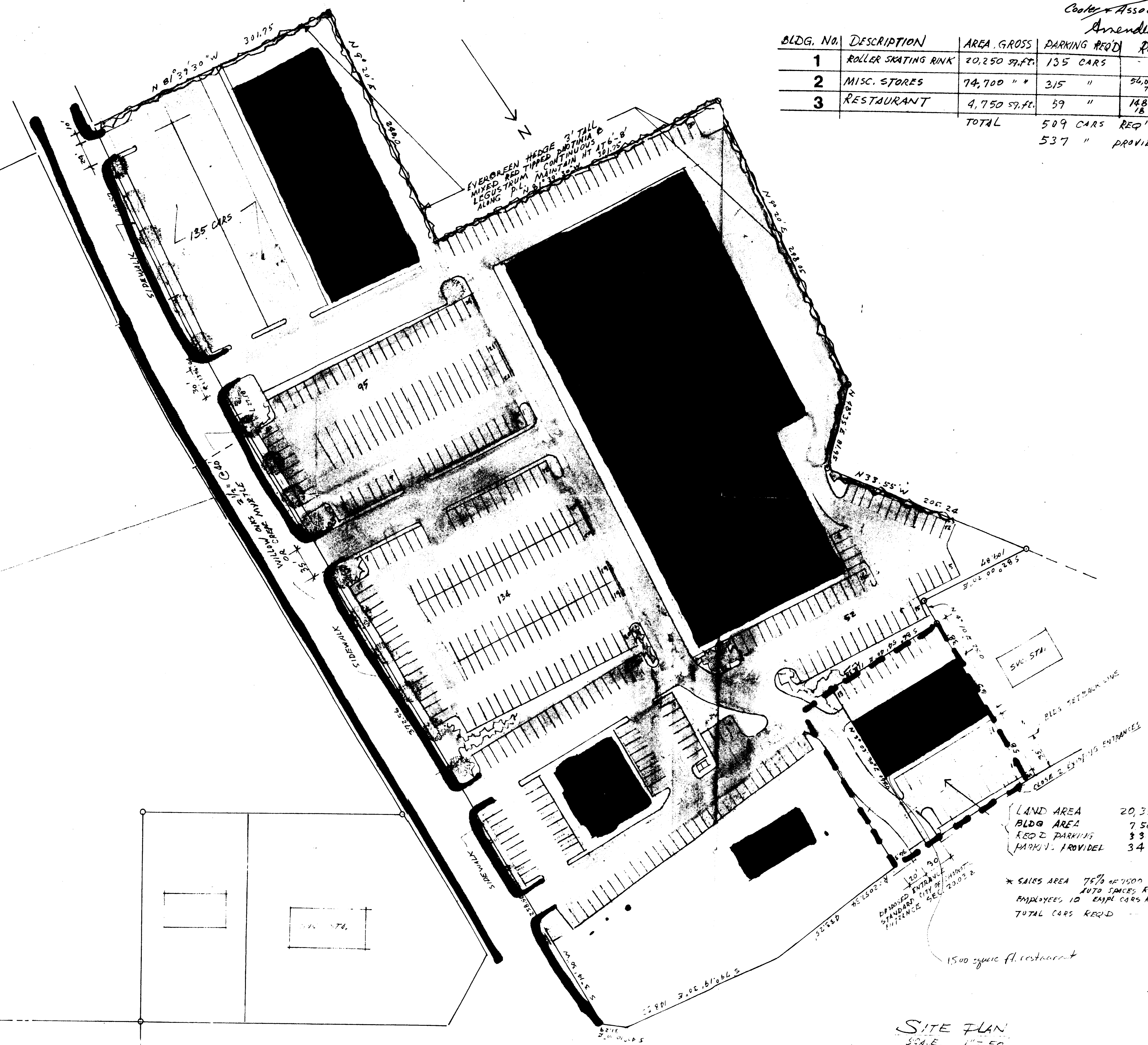
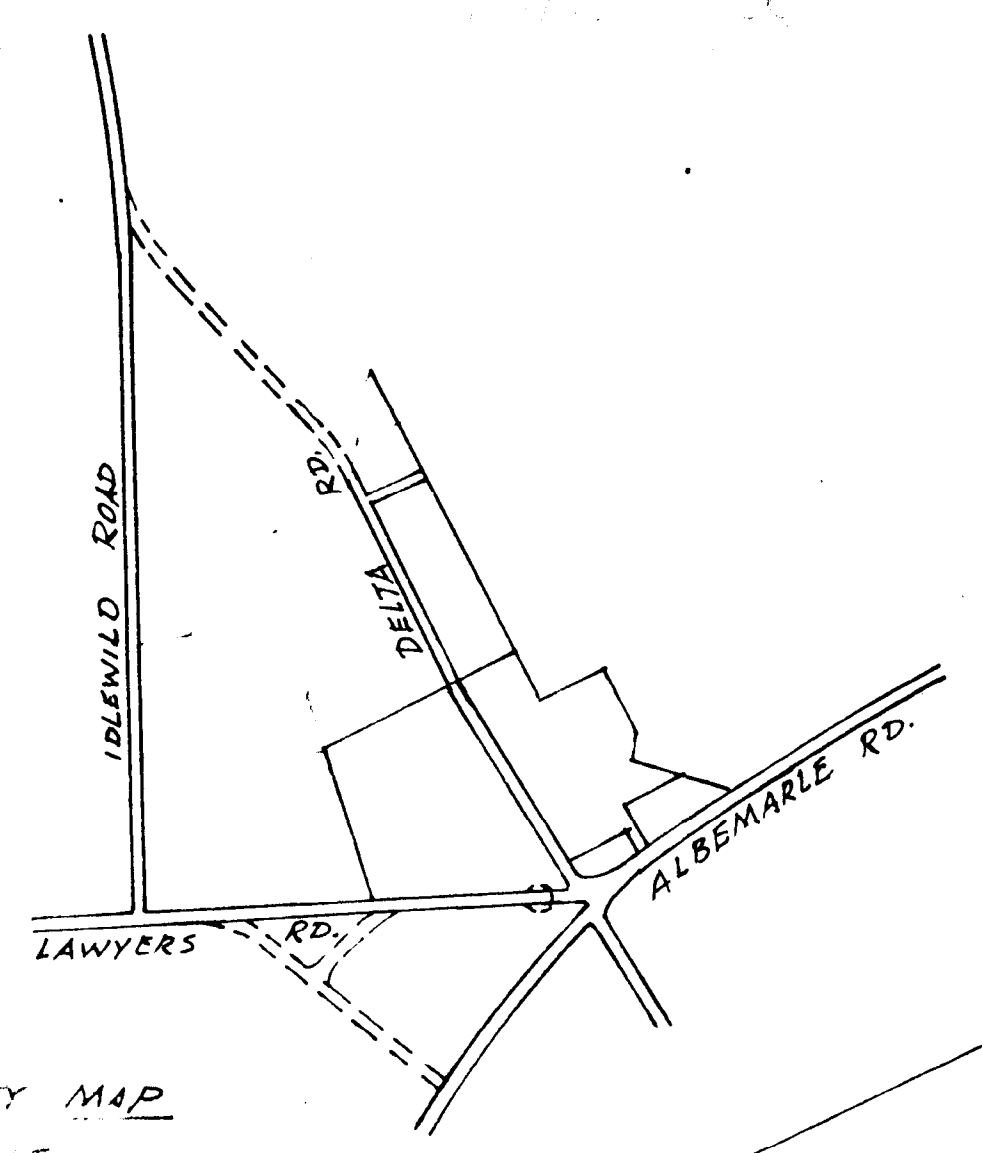


* Site Plan Amendment
 As approved by City Council 12/17/75
 Supersedes Petition 76-63 Harold
 Cooler & Associates approved 12/24/74
 Amended 10/15/84 - See 94-57

BLDG. NO.	DESCRIPTION	AREA GROSS	PARKING REQ'D	REMARKS
1	ROLLER SKATING RINK	20,250 SQ. FT.	135 CARS	
2	MISC. STORES	74,700 " "	315 "	54,000 SQ. FT. SALES AREA 70 EMPLOYEES AT MAX.
3	RESTAURANT	4,750 SQ. FT.	59 "	148 SEAT CAPACITY 18 EMPLOYEES AT MAX.
TOTAL			509 CARS REQ'D	
			537 " PROVIDED	

Raj Kumar



LAND AREA	20,358 SF
BLDG AREA	7,500 SF
REQ'D PARKING	33 CARS *
PARKING PROVIDED	34 "

* SALES AREA 75% OF 7500 SF = 5625 SF
 AUTO SPACES REQ'D 28
 EMPLOYEES 10 EMP' CARS REQ'D 5
 TOTAL CARS REQ'D 33

SITE PLAN
 SCALE 1" = 50'

HAROLD L COOLER ASSOCIATES, P.A.
 ARCHITECTS / PLANNERS
 1908 KENILWORTH AVE. CHARLOTTE, NORTH CAROLINA
 MEMBERS OF THE AMERICAN INSTITUTE OF ARCHITECTS

BROOKRIDGE CENTER P.I. SCD

REVISIONS	
DATE	28 July 1976
DRAWN BY	
CHECKED BY	
JOB NUMBER	
SHEET NUMBER	