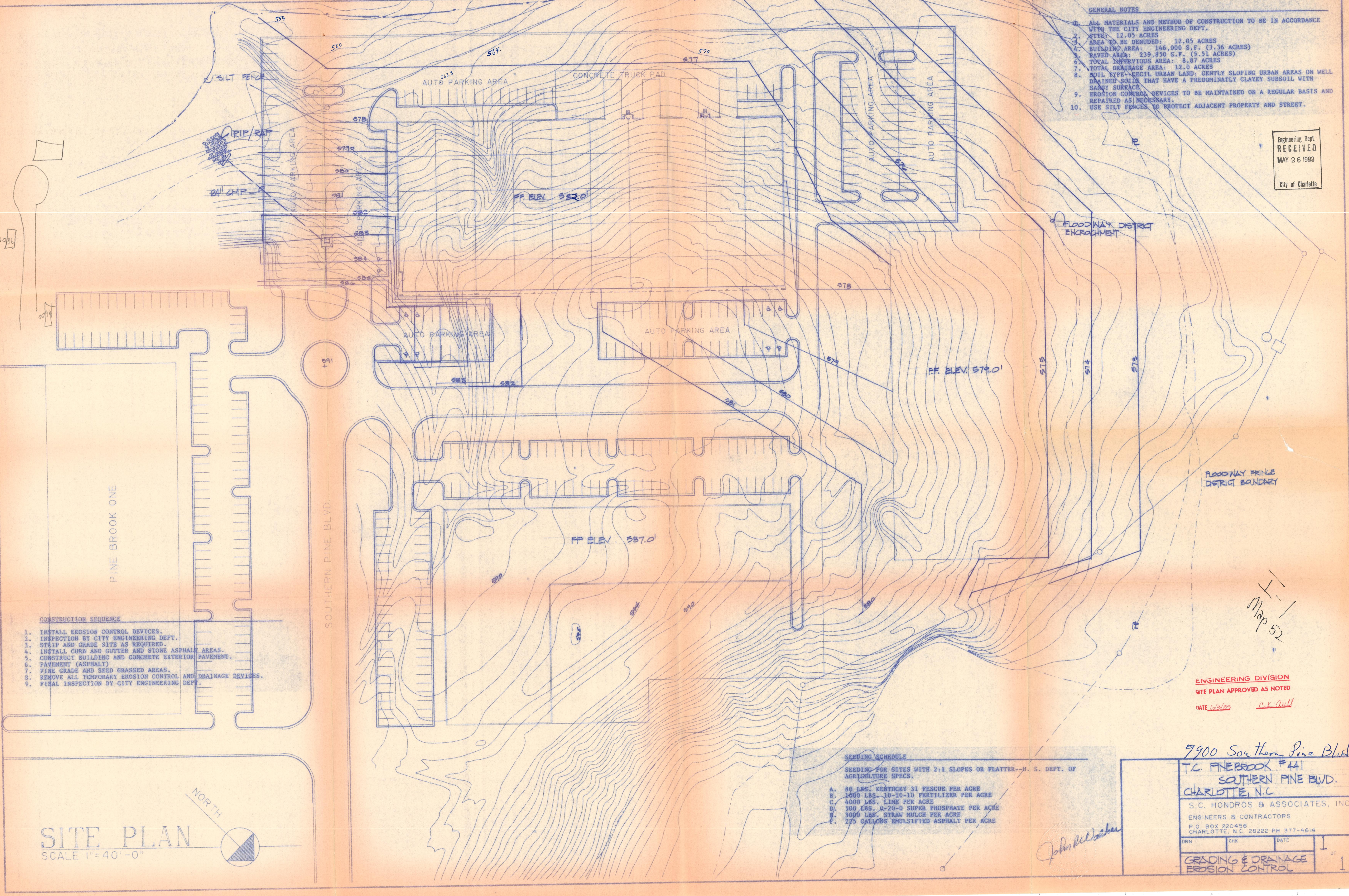


GENERAL NOTES

1. ALL MATERIALS AND METHOD OF CONSTRUCTION TO BE IN ACCORDANCE WITH THE CITY ENGINEERING DEPT.
2. SITE: 12.05 ACRES
3. AREA TO BE DENUDED: 12.05 ACRES
4. BUILDING AREA: 146,000 S.F. (3.36 ACRES)
5. PAVED AREA: 239,850 S.F. (5.51 ACRES)
6. TOTAL IMPERVIOUS AREA: 8.87 ACRES
7. TOTAL DRAINAGE AREA: 12.0 ACRES
8. SOIL TYPE: REG. URBAN LAND; GENTLY SLOPING URBAN AREAS ON WELL DRAINIED SOILS THAT HAVE A PREDOMINANTLY CLAYEY SUBSOIL WITH SANDY SURFACE.
9. EROSION CONTROL DEVICES TO BE MAINTAINED ON A REGULAR BASIS AND REPAIRED AS NECESSARY.
10. USE SILT FENCES TO PROTECT ADJACENT PROPERTY AND STREET.

Engineering Dept.  
RECEIVED  
MAY 26 1983  
City of Charlotte



- CONSTRUCTION SEQUENCE
1. INSTALL EROSION CONTROL DEVICES.
  2. INSPECTION BY CITY ENGINEERING DEPT.
  3. STRIP AND GRADE SITE AS REQUIRED.
  4. INSTALL CURB AND GUTTER AND STONE ASPHALT AREAS.
  5. CONSTRUCT BUILDING AND CONCRETE EXTERIOR PAVEMENT.
  6. PAVEMENT (ASPHALT)
  7. FINE GRADE AND SEED GRASSED AREAS.
  8. REMOVE ALL TEMPORARY EROSION CONTROL AND DRAINAGE DEVICES.
  9. FINAL INSPECTION BY CITY ENGINEERING DEPT.

- SEEDING SCHEDULE
- SEEDING FOR SITES WITH 2:1 SLOPES OR FLATTER--H. S. DEPT. OF AGRICULTURE SPECS.
- A. 80 LBS. KENTUCKY 31 FESCUE PER ACRE
  - B. 1000 LBS. 10-10-10 FERTILIZER PER ACRE
  - C. 4000 LBS. LIME PER ACRE
  - D. 500 LBS. 0-20-0 SUPER PHOSPHATE PER ACRE
  - E. 3000 LBS. STRAW MULCH PER ACRE
  - F. 225 GALLONS EMULSIFIED ASPHALT PER ACRE

ENGINEERING DIVISION  
SITE PLAN APPROVED AS NOTED  
DATE 10/2/82 *C.K. Aull*

*I-1*  
Map 52

SITE PLAN  
SCALE 1" = 40'-0"

NORTH

7900 Southern Pine Blvd.  
T.C. FINEBROOK #441  
SOUTHERN PINE BLVD.  
CHARLOTTE, N.C.

S.C. HONDROS & ASSOCIATES, INC.  
ENGINEERS & CONTRACTORS  
P.O. BOX 220456  
CHARLOTTE, N.C. 28222 PH 377-4614

DRN	CHK	DATE

GRADING & DRAINAGE  
EROSION CONTROL

1"

*John P. ...*