

McKee Insulating Co., Inc.

Site Plan Scale 1" = 20'

Petition No. 79-2 (c)
Present Zoning B-2
Requested Zoning I-1 (CD)

Petitioner's Office Employees - 3
Petitioner's Warehouse Employees - 7
No. Parking Spaces for Office Employees:
Required - 4
Provided - 4
No. Parking Spaces for Warehouse Employees:
Required - 4
Provided - 6

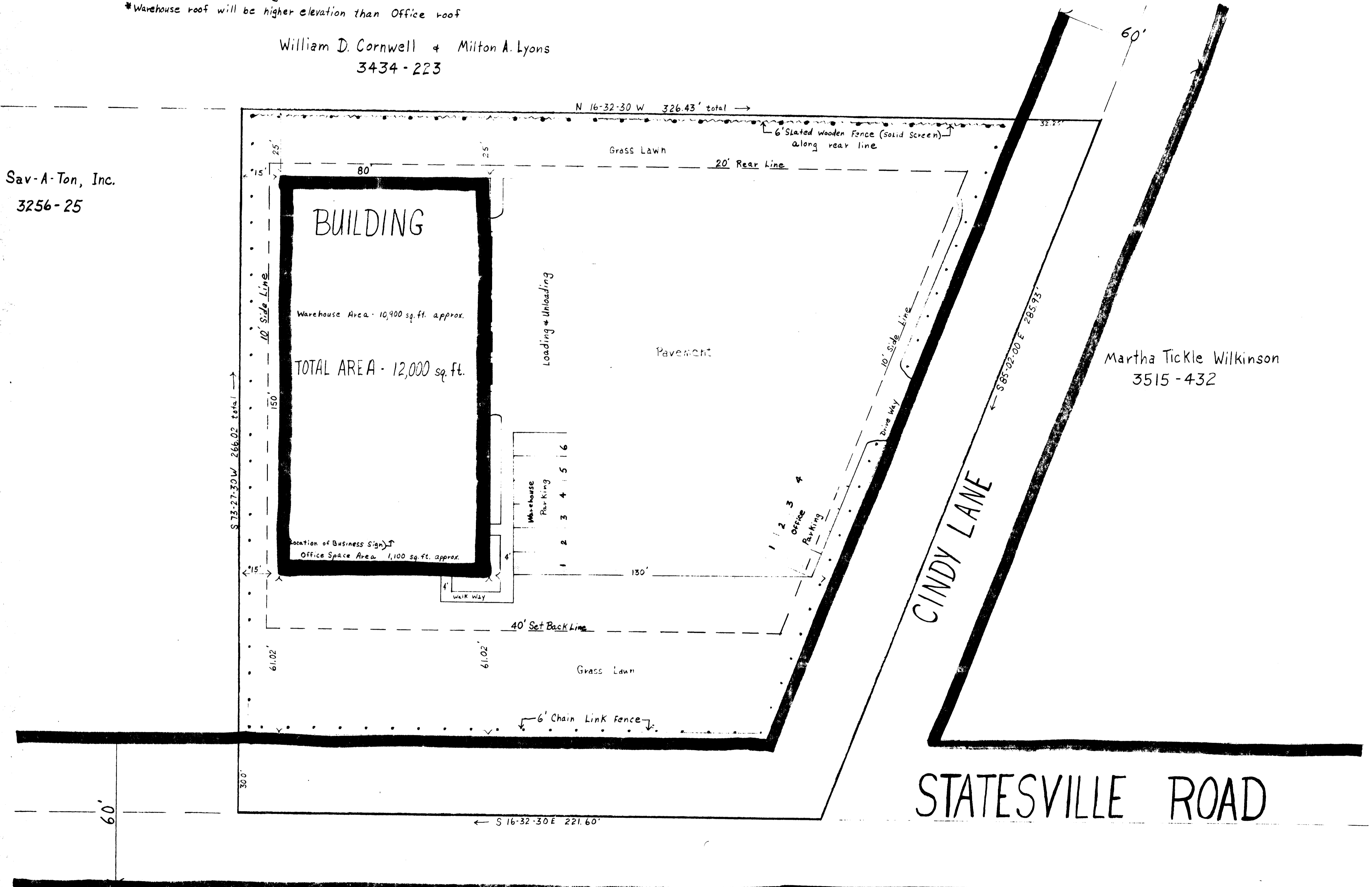
Business Sign:

Location - Affixed to front of Warehouse (facing Statesville Rd) *
Letter size - max. 2' height
* Warehouse roof will be higher elevation than Office roof

William D. Cornwell + Milton A. Lyons
3434-223

Sav-A-Ton, Inc.
3256-25

Martha Tickle Wilkinson
3515-432



William Alonzo Thomas + wife,
Gertie G. Thomas
1088-523

Charles Lee Melton + wife,
Nancy J. Melton
2860-45

As Approved by Co. Commission
4/2/79 79-2 C