

1979-08 C

As approved by Co. Commission

9/17/79

Amended by new plan:  
Dwain Carmichael  
Pct. 83-25 (C).

SRV... IN...  
WITH...  
...  
2-...  
2-...

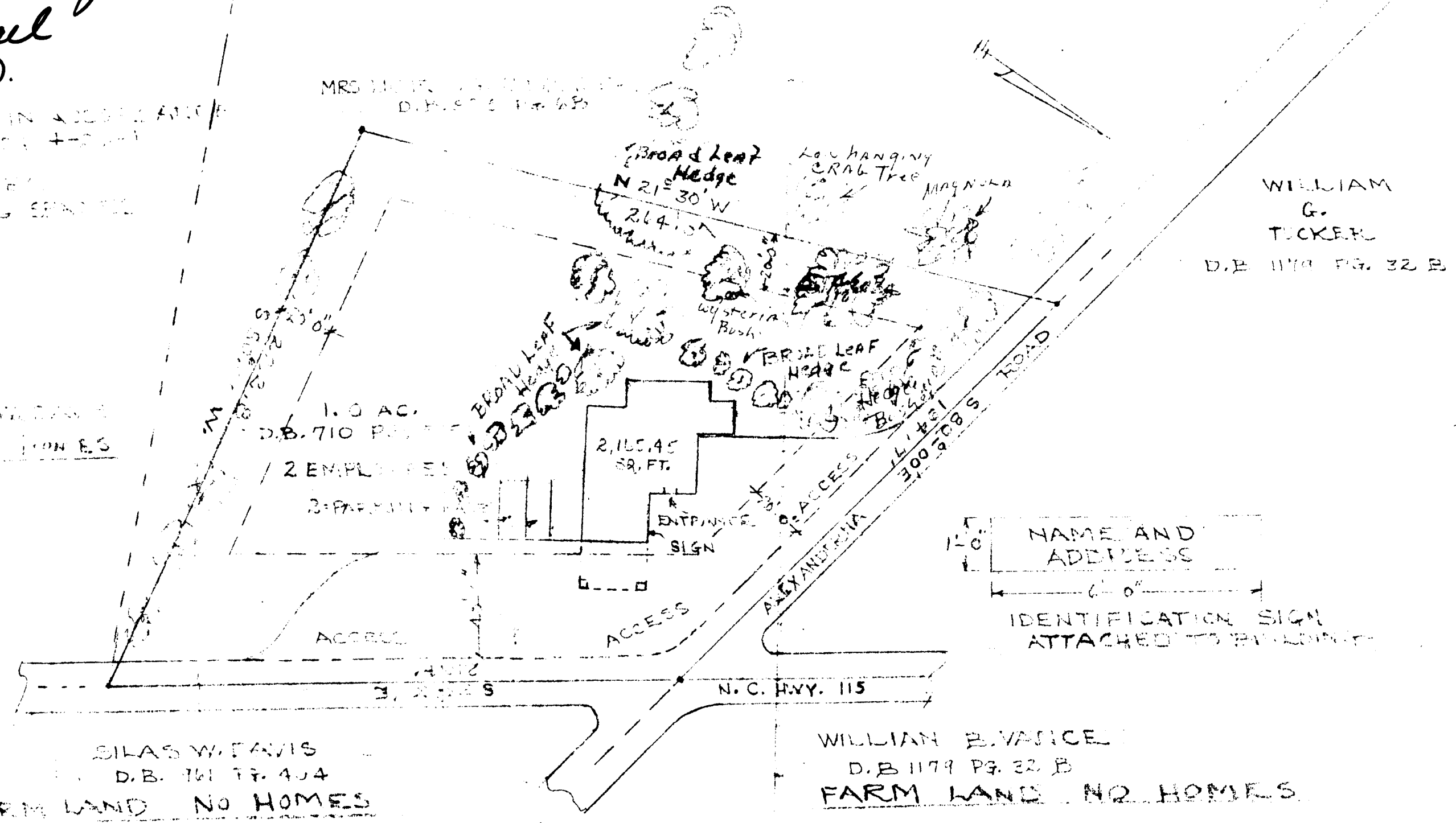
MRS LILLIE M. ALEXANDER  
D.B. 1179 PG. 32 B

WILLIAM  
G.  
TUCKER  
D.B. 1179 PG. 32 B

SILAS WEAVER  
FARM LAND NO HOMES

SILAS W. DAVIS  
D.B. 1179 PG. 404  
FARM LAND NO HOMES

WILLIAM B. VANCE  
D.B. 1179 PG. 32 B  
FARM LAND NO HOMES



PROPOSED REZONING MAP  
 FOR MRS LILLIE M. ALEXANDER, MECKLENBURG CO.  
 PRESENT ZONING R-7 PROPOSED I-1 "CD" FOR CABINET SHOP  
 SCALE 1"=40'-0"