

Site Plan
NORTH
0 60 120

SURVEY NOTE:
SURVEY DATA WAS TAKEN FROM SURVEY PROVIDED
BY F. B. PYLE & ASSOCIATES, ASSOCIATED LAND
SURVEYORS # L.M.A. CATED MARCH 9, 1979, FILE # 60
NOTE:
PROVIDE DETENTION POND AS REQUIRED BY CITY CODE

PROJECT:
230 South First
Charlotte
North Carolina 28202
704/333-0880

Clark Tribble Harris & Li

Revisions
3-21-79
AS TO TRAFFIC AND DEPT COMMENTS
4-10-79
AS TO 4-6-79 DEVELOPER COMMENTS
POND FROM 10' TO 20' FROM ENTRY RD
4-11-79
AS TO REVISED SURVEY INFORMATION
PLANTED MEDIAN STRIP @ 20' FROM AND
RELOCATION OF BONNYDOCK LN AND ITS
INTERSECTION, REVISED DRIVEWAY
LOTS 1, 2, 3, 4, 5
6-9-79
AS TO 6-5-79 DEVELOPER COMMENTS
REMOVAL OF 20' INTERLOCK BETWEEN
ADJUTMENT OF LOTS 4, 5 AND 6
THROUGH LOT 5 AND 6 TO LOT 5 AND
LOT 6 FOR MEDIAN ACCESS
RELOCATION OF DRIVEWAY UNDER
4-21-81
1. SOL-BORING LOCATIONS LOTS 1, 2, 3, 4, 5
BLDG 8-11 AND 8-21 SITE 50-1 THROUGH 50-5
2. LATERALS REQ'D FOR SAN. SEWER
SERVICE TO LOTS 1 & 2 (NOTED A&B)
5-12-81
REVISED LANDSCAPE PLAN LOTS
5, 6, 7, 8, 9, 10, 11, 12, 13, 14, 15, 16, 17, 18, 19, 20, 21, 22, 23, 24, 25, 26, 27, 28, 29, 30, 31, 32, 33, 34, 35, 36, 37, 38, 39, 40, 41, 42, 43, 44, 45, 46, 47, 48, 49, 50, 51, 52, 53, 54, 55, 56, 57, 58, 59, 60, 61, 62, 63, 64, 65, 66, 67, 68, 69, 70, 71, 72, 73, 74, 75, 76, 77, 78, 79, 80, 81, 82, 83, 84, 85, 86, 87, 88, 89, 90, 91, 92, 93, 94, 95, 96, 97, 98, 99, 100, 101, 102, 103, 104, 105, 106, 107, 108, 109, 110, 111, 112, 113, 114, 115, 116, 117, 118, 119, 120, 121, 122, 123, 124, 125, 126, 127, 128, 129, 130, 131, 132, 133, 134, 135, 136, 137, 138, 139, 140, 141, 142, 143, 144, 145, 146, 147, 148, 149, 150, 151, 152, 153, 154, 155, 156, 157, 158, 159, 160, 161, 162, 163, 164, 165, 166, 167, 168, 169, 170, 171, 172, 173, 174, 175, 176, 177, 178, 179, 180, 181, 182, 183, 184, 185, 186, 187, 188, 189, 190, 191, 192, 193, 194, 195, 196, 197, 198, 199, 200, 201, 202, 203, 204, 205, 206, 207, 208, 209, 210, 211, 212, 213, 214, 215, 216, 217, 218, 219, 220, 221, 222, 223, 224, 225, 226, 227, 228, 229, 230, 231, 232, 233, 234, 235, 236, 237, 238, 239, 240, 241, 242, 243, 244, 245, 246, 247, 248, 249, 250, 251, 252, 253, 254, 255, 256, 257, 258, 259, 260, 261, 262, 263, 264, 265, 266, 267, 268, 269, 270, 271, 272, 273, 274, 275, 276, 277, 278, 279, 280, 281, 282, 283, 284, 285, 286, 287, 288, 289, 290, 291, 292, 293, 294, 295, 296, 297, 298, 299, 300, 301, 302, 303, 304, 305, 306, 307, 308, 309, 310, 311, 312, 313, 314, 315, 316, 317, 318, 319, 320, 321, 322, 323, 324, 325, 326, 327, 328, 329, 330, 331, 332, 333, 334, 335, 336, 337, 338, 339, 340, 341, 342, 343, 344, 345, 346, 347, 348, 349, 350, 351, 352, 353, 354, 355, 356, 357, 358, 359, 360, 361, 362, 363, 364, 365, 366, 367, 368, 369, 370, 371, 372, 373, 374, 375, 376, 377, 378, 379, 380, 381, 382, 383, 384, 385, 386, 387, 388, 389, 390, 391, 392, 393, 394, 395, 396, 397, 398, 399, 400, 401, 402, 403, 404, 405, 406, 407, 408, 409, 410, 411, 412, 413, 414, 415, 416, 417, 418, 419, 420, 421, 422, 423, 424, 425, 426, 427, 428, 429, 430, 431, 432, 433, 434, 435, 436, 437, 438, 439, 440, 441, 442, 443, 444, 445, 446, 447, 448, 449, 450, 451, 452, 453, 454, 455, 456, 457, 458, 459, 460, 461, 462, 463, 464, 465, 466, 467, 468, 469, 470, 471, 472, 473, 474, 475, 476, 477, 478, 479, 480, 481, 482, 483, 484, 485, 486, 487, 488, 489, 490, 491, 492, 493, 494, 495, 496, 497, 498, 499, 500, 501, 502, 503, 504, 505, 506, 507, 508, 509, 510, 511, 512, 513, 514, 515, 516, 517, 518, 519, 520, 521, 522, 523, 524, 525, 526, 527, 528, 529, 530, 531, 532, 533, 534, 535, 536, 537, 538, 539, 540, 541, 542, 543, 544, 545, 546, 547, 548, 549, 550, 551, 552, 553, 554, 555, 556, 557, 558, 559, 560, 561, 562, 563, 564, 565, 566, 567, 568, 569, 570, 571, 572, 573, 574, 575, 576, 577, 578, 579, 580, 581, 582, 583, 584, 585, 586, 587, 588, 589, 590, 591, 592, 593, 594, 595, 596, 597, 598, 599, 600, 601, 602, 603, 604, 605, 606, 607, 608, 609, 610, 611, 612, 613, 614, 615, 616, 617, 618, 619, 620, 621, 622, 623, 624, 625, 626, 627, 628, 629, 630, 631, 632, 633, 634, 635, 636, 637, 638, 639, 640, 641, 642, 643, 644, 645, 646, 647, 648, 649, 650, 651, 652, 653, 654, 655, 656, 657, 658, 659, 660, 661, 662, 663, 664, 665, 666, 667, 668, 669, 670, 671, 672, 673, 674, 675, 676, 677, 678, 679, 680, 681, 682, 683, 684, 685, 686, 687, 688, 689, 690, 691, 692, 693, 694, 695, 696, 697, 698, 699, 700, 701, 702, 703, 704, 705, 706, 707, 708, 709, 710, 711, 712, 713, 714, 715, 716, 717, 718, 719, 720, 721, 722, 723, 724, 725, 726, 727, 728, 729, 730, 731, 732, 733, 734, 735, 736, 737, 738, 739, 740, 741, 742, 743, 744, 745, 746, 747, 748, 749, 750, 751, 752, 753, 754, 755, 756, 757, 758, 759, 760, 761, 762, 763, 764, 765, 766, 767, 768, 769, 770, 771, 772, 773, 774, 775, 776, 777, 778, 779, 780, 781, 782, 783, 784, 785, 786, 787, 788, 789, 790, 791, 792, 793, 794, 795, 796, 797, 798, 799, 800, 801, 802, 803, 804, 805, 806, 807, 808, 809, 810, 811, 812, 813, 814, 815, 816, 817, 818, 819, 820, 821, 822, 823, 824, 825, 826, 827, 828, 829, 830, 831, 832, 833, 834, 835, 836, 837, 838, 839, 840, 841, 842, 843, 844, 845, 846, 847, 848, 849, 850, 851, 852, 853, 854, 855, 856, 857, 858, 859, 860, 861, 862, 863, 864, 865, 866, 867, 868, 869, 870, 871, 872, 873, 874, 875, 876, 877, 878, 879, 880, 881, 882, 883, 884, 885, 886, 887, 888, 889, 890, 891, 892, 893, 894, 895, 896, 897, 898, 899, 900, 901, 902, 903, 904, 905, 906, 907, 908, 909, 910, 911, 912, 913, 914, 915, 916, 917, 918, 919, 920, 921, 922, 923, 924, 925, 926, 927, 928, 929, 930, 931, 932, 933, 934, 935, 936, 937, 938, 939, 940, 941, 942, 943, 944, 945, 946, 947, 948, 949, 950, 951, 952, 953, 954, 955, 956, 957, 958, 959, 960, 961, 962, 963, 964, 965, 966, 967, 968, 969, 970, 971, 972, 973, 974, 975, 976, 977, 978, 979, 980, 981, 982, 983, 984, 985, 986, 987, 988, 989, 990, 991, 992, 993, 994, 995, 996, 997, 998, 999, 1000

Request For Rezoning
From O-15 & R-12MF
To O-15 (CD) For
Office Use

Total Acreage To Be Rezoned
O-15 (CD): 28.96 acres

**Eastpark
Executive
Center**

Project 79111
Date 3/8/79

Attached to memo of P.E. Boyce
dated June 26, 1981

**CHARLOTTE-MECKLENBURG
PLANNING COMMISSION**
INTER-OFFICE COMMUNICATION

DATE June 26, 1981
TO: Dale Long
City Zoning Administrator
FROM: Fred E. Bryant
Assistant Planning Director

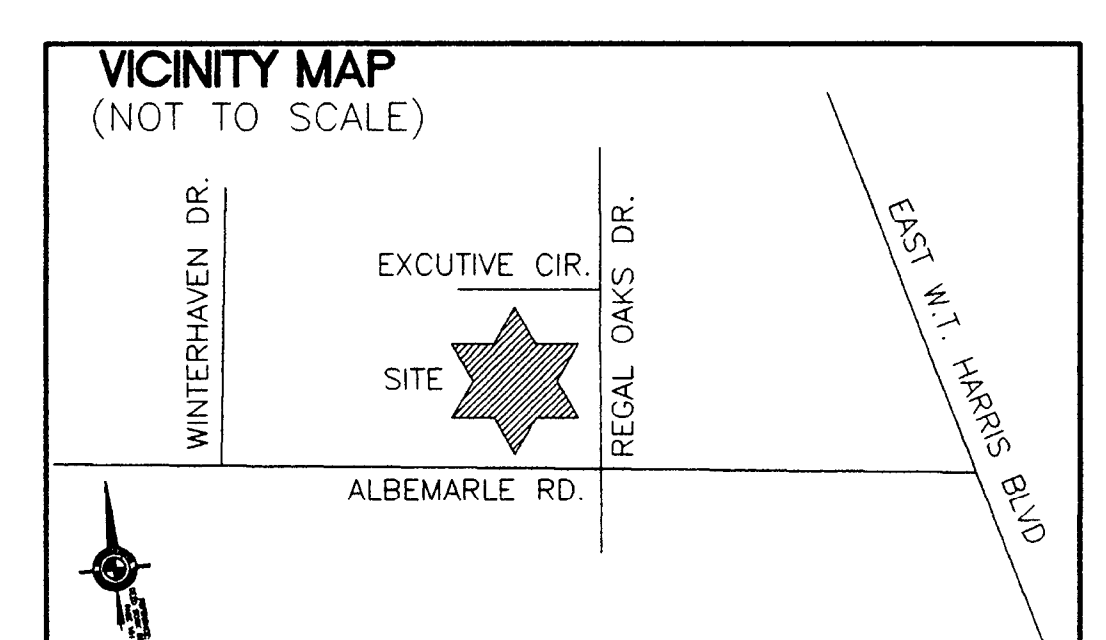
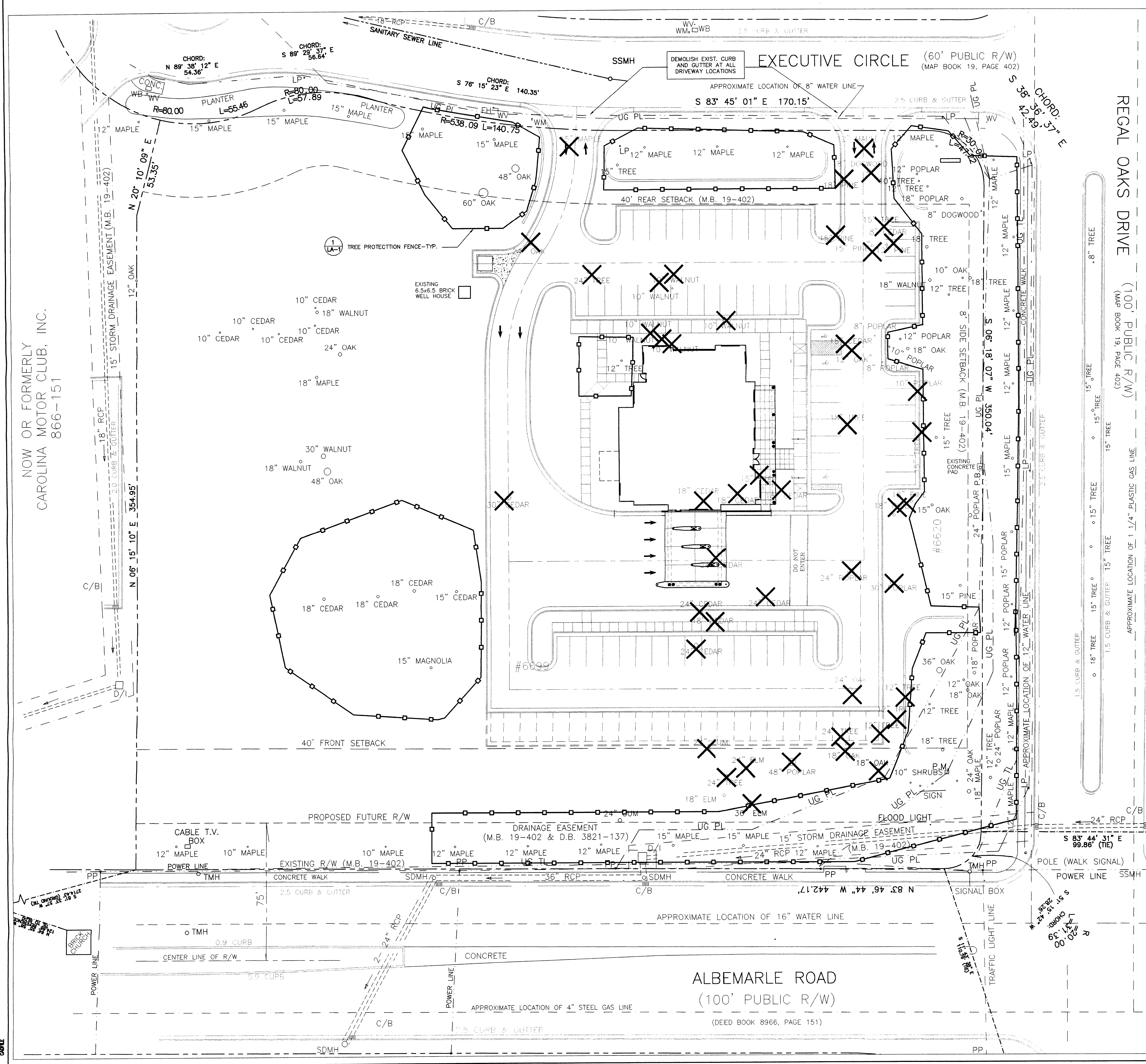
SUBJECT: Amended Site Plan - Eastpark Executive Center
Albemarle Road and Regal Oaks Drive,
Zoning Petition #79-26, NCB

Attached is a revised site plan for the above mentioned property which I am administratively approving.

There are two basic changes. The first is at the northwest (left) rear portion of the property which originally indicated a five-foot earth berm. The change is to not install the earth berm, but to keep the existing trees and to increase the screen at this location by additional vegetation.

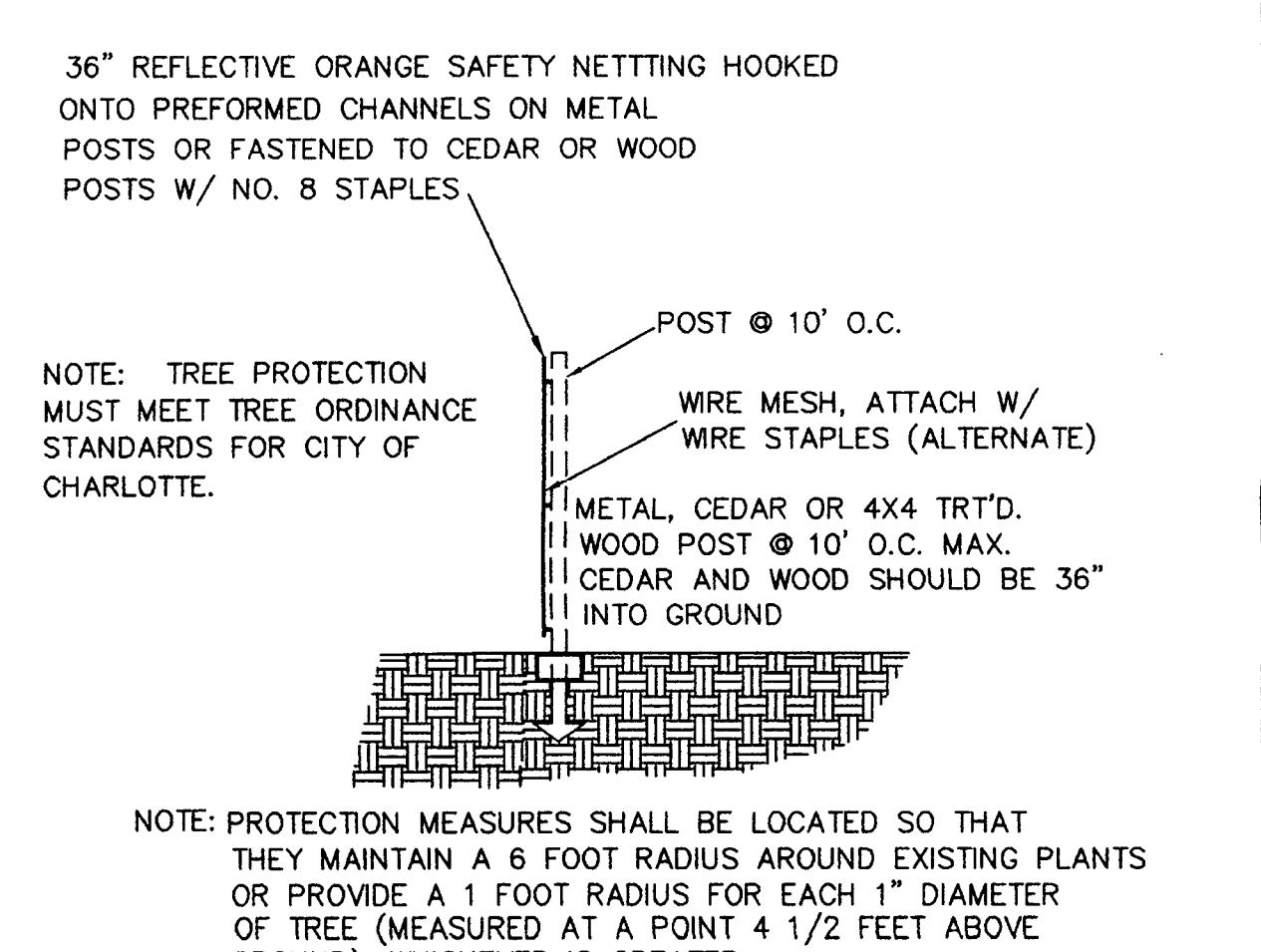
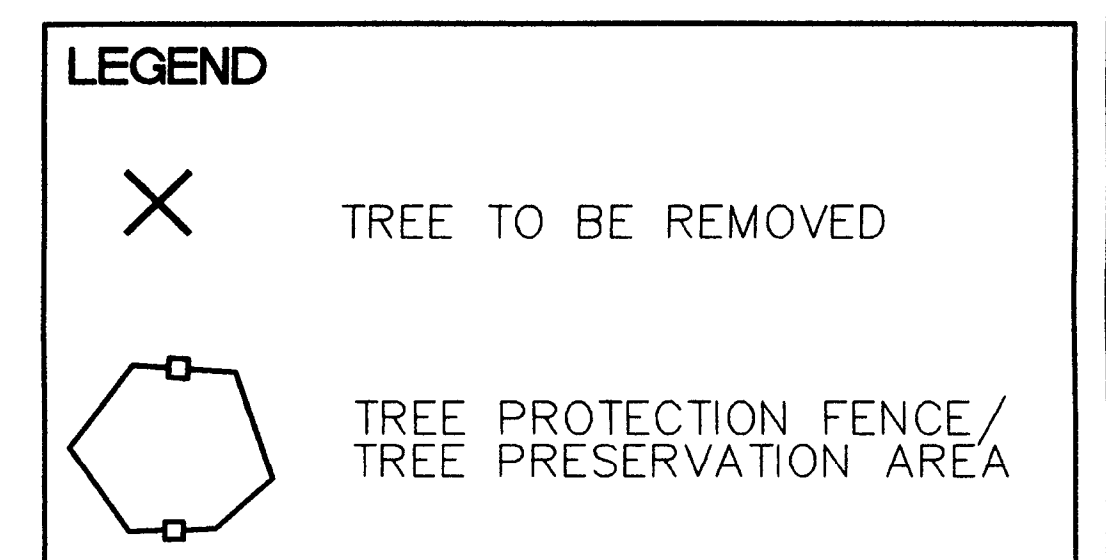
The second change involves switching the buildings for the areas designated Lot 1 and Lot 2. The change places the building originally proposed for Lot 1 on Lot 2, and the one originally proposed for Lot 2 to be placed on Lot 1. This change does not change the amount of square footage of either of these structures, but makes a slight change in the lot sizes in order to accommodate the necessary parking.

Cc: Floyd T. Boyce
Vice President and Trust Officer
North Carolina National Bank
Charlotte, N.C. 28255



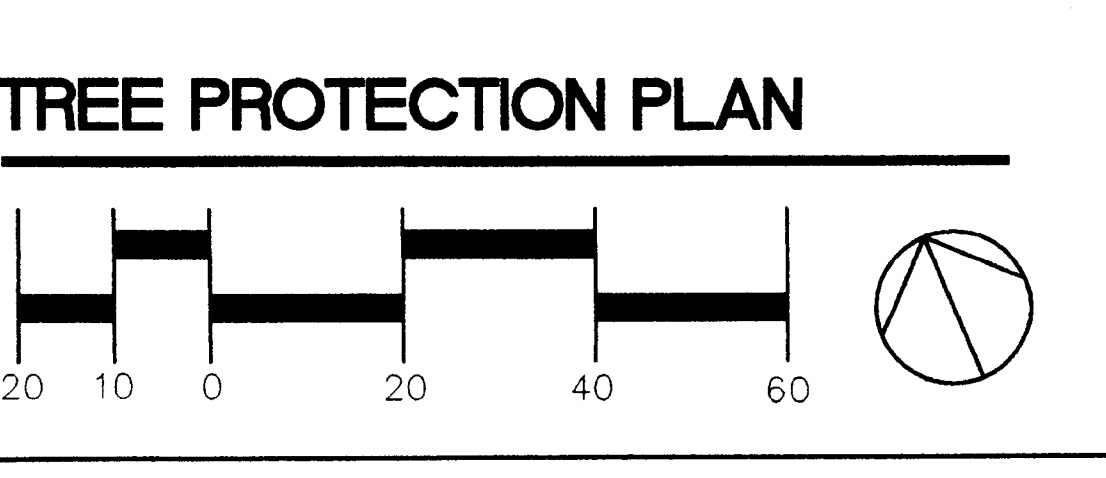
SITE DATA

OWNER OF SITE:	STATE EMPLOYEES' CREDIT UNION PO BOX 27665 BALDWIN, NC 27661 919-839-5000
ADDRESS OF SITE:	6699 ALBEMARLE RD.
PLAN PREPARED BY:	O'BRIEN/ATKINS ASSOCIATES, PA PO BOX 10257 RTP, NC 27709 919-941-9000
ZONING:	O15CD
TOTAL ACRES:	4.2875 AC
TOTAL BLDG. SQ. FT.:	6,697 SQ. FT.
HEIGHT OF BUILDING:	36 FT. 1 STORY BUILDING
REQUIRED PARKING FINANCIAL INSTITUTION:	1/200 SF. BLDG. = 31 (2 HANDICAP SPACES)
PARKING PROVIDED:	64 (3 HANDICAP SPACES)
IMPERVIOUS SURFACE:	+59,883.20 SF
TAX PARCEL #:	103-261-12



- NOTES**
- NO SOIL DISTURBANCE OR COMPACTION, CONSTRUCTION MATERIALS, TRAFFIC, BURIAL PITS, TRENCHING OR OTHER LAND DISTURBING ACTIVITY ALLOWED IN THE TREE PROTECTION ZONE.
 - TREE BARRICADES MUST BE INSTALLED BEFORE ANY DEMOLITION/CLEARING/GRADING/CONSTRUCTION AND NOT REMOVED UNTIL AFTER FINAL INSPECTION BY URBAN FORESTER.

ATTACHED TO ADMINISTRATIVE APPROVAL
DATE: March 24, 2000
BY: MARTIN R. CRAMTON, JR.



NOW OR FORMERLY
CAROLINA MOTOR CLUB, INC.
866-151

REVISIONS

NO.	DATE	DESCRIPTION

O'Brien/Atkins
Architecture/Planning/Engineering/Interior Design
P. O. BOX 12037
Research Triangle Park
North Carolina 27709
Telephone: 919/941-9000
Fax: 919/941-9002

State Employees' Credit Union
Intersection of Albemarle Rd. and Regal Oaks Drive
Charlotte, North Carolina

DATE: 3-22-00
SCALE: SHOWN
DESIGNED BY: [Signature]
DRAWN BY: ABC
CHECKED BY: JMS
JOB: 99073
SHEET: LA-1
OF 6 SHEETS

**CHARLOTTE - MECKLENBURG
PLANNING COMMISSION**
INTER - OFFICE COMMUNICATION

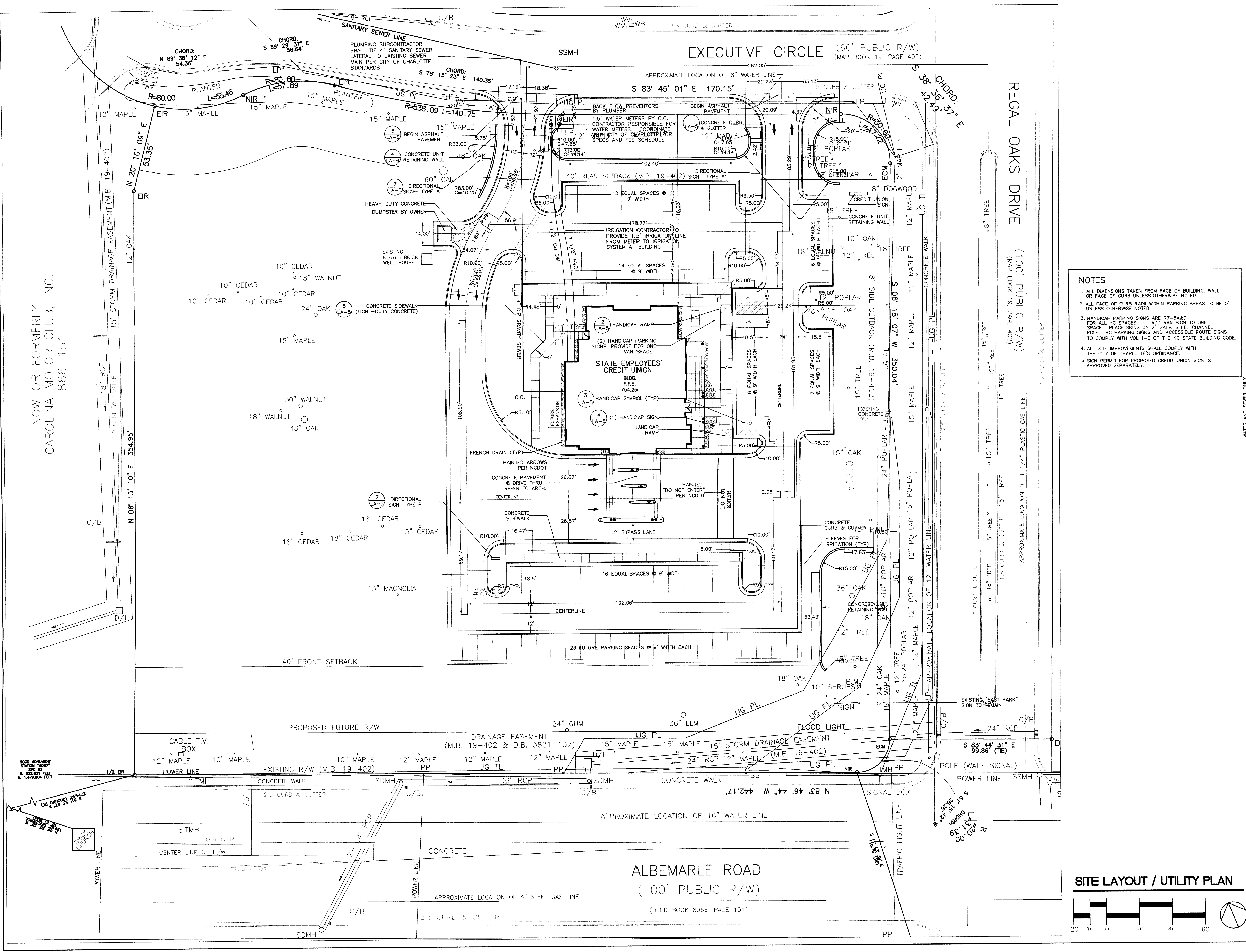
DATE: March 24, 2000

TO: Robert Brandon
Zoning Administrator

FROM: Martin R. Cramton, Jr.
Planning Director

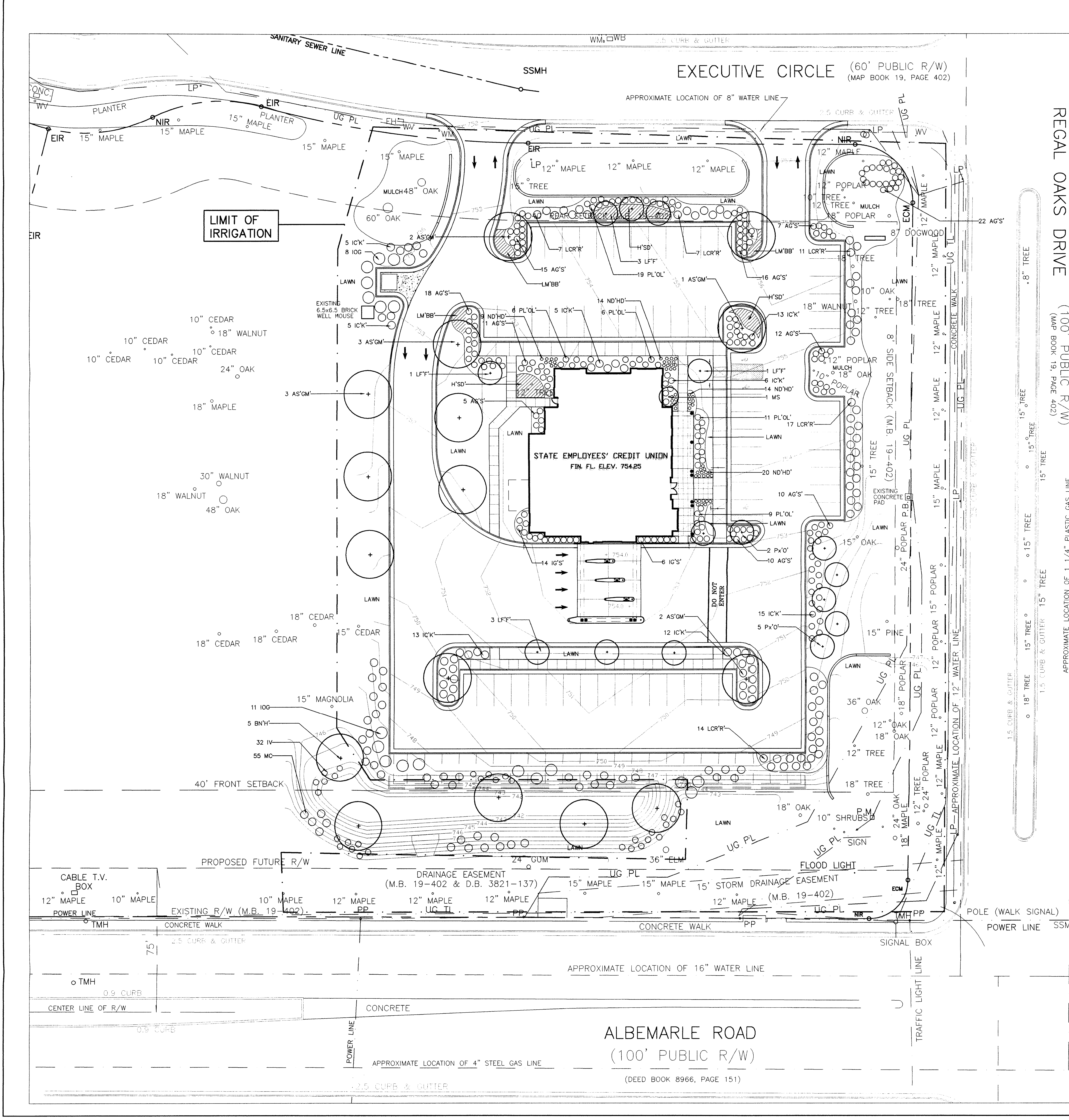
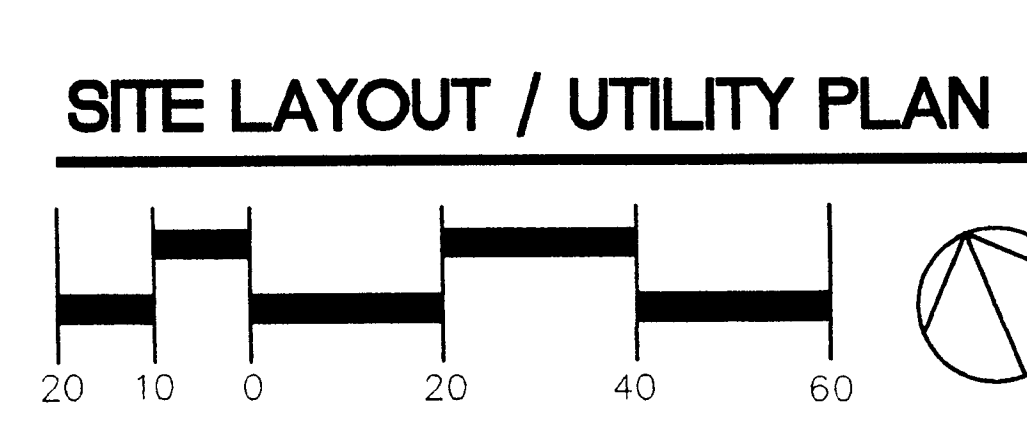
SUBJECT: Administrative Approval for Petition No. 79-26, Eastpark Executive Center.

Attached is a specific plan to allow a State Employees' Credit Union on parcel 1 as shown on the above conditional plan. This request will also allow an additional access point from the interior roadway. The plan indicates trees to be removed within the setback any tree removal will first be approved by Land Development Engineering. Since these changes are minor, I am administratively approving this specific plan. Please use this plan when evaluating requests for building permits and certificates of occupancy.



NOTES

- ALL DIMENSIONS TAKEN FROM FACE OF BUILDING WALL OR FACE OF CURB UNLESS OTHERWISE NOTED.
- ALL FACE OF CURB SIDE WITHIN PARKING AREAS TO BE 4" UNLESS OTHERWISE NOTED.
- HANDICAP PARKING SPACES SHALL BE 8'-0" WIDE FOR ALL SPACES OR 9'-6" WIDE FOR ONE SPACE. PARKING SPACES SHALL BE 5'-0" WIDE TO CURB WITH 1'-0" OF THE NC STATE BUILDING CODE TO CURB WITH 1'-0" OF THE NC STATE BUILDING CODE.
- ALL SITE IMPROVEMENTS SHALL COMPLY WITH THE CITY OF CHARLOTTE ORDINANCE.
- CONTRACTOR SHALL VERIFY LOCATION OF ALL UTILITIES PRIOR TO BEGINNING WORK.



PLANT LIST

KEY	PLANT NAME	SIZE (HxW)	ROOT	REMARKS
M1	MAGNOLIA STELLATA STAR MAGNOLIA	12" Hx 12" W	BA	FULL MULTI-TRUNK
M2	ACER SACCHARINUM GREEN HEDERA / GREEN MOUNTAIN SUGAR MAPLE	24" Hx 12" W	BA	FULL MATES
M3	BETULA NIGRA NORWAY SPRUCE / NORWAY SPRUCE	12" Hx 12" W	BA	FULL MATES
M4	ZELKOVA SCOPULOIDES VIRENS / VILLAGE GREEN ZELKOVA	24" Hx 12" W	BA	FULL MATES
M5	FRAXINUS SPINOSA / SPANISH OAK	12" Hx 12" W	BA	FULL MATES
M6	QUERCUS SPINOSA / SPANISH OAK	12" Hx 12" W	BA	FULL MATES
M7	QUERCUS SPINOSA / SPANISH OAK	12" Hx 12" W	BA	FULL MATES
M8	QUERCUS SPINOSA / SPANISH OAK	12" Hx 12" W	BA	FULL MATES
M9	QUERCUS SPINOSA / SPANISH OAK	12" Hx 12" W	BA	FULL MATES
M10	QUERCUS SPINOSA / SPANISH OAK	12" Hx 12" W	BA	FULL MATES
M11	QUERCUS SPINOSA / SPANISH OAK	12" Hx 12" W	BA	FULL MATES
M12	QUERCUS SPINOSA / SPANISH OAK	12" Hx 12" W	BA	FULL MATES
M13	QUERCUS SPINOSA / SPANISH OAK	12" Hx 12" W	BA	FULL MATES
M14	QUERCUS SPINOSA / SPANISH OAK	12" Hx 12" W	BA	FULL MATES
M15	QUERCUS SPINOSA / SPANISH OAK	12" Hx 12" W	BA	FULL MATES
M16	QUERCUS SPINOSA / SPANISH OAK	12" Hx 12" W	BA	FULL MATES
M17	QUERCUS SPINOSA / SPANISH OAK	12" Hx 12" W	BA	FULL MATES
M18	QUERCUS SPINOSA / SPANISH OAK	12" Hx 12" W	BA	FULL MATES
M19	QUERCUS SPINOSA / SPANISH OAK	12" Hx 12" W	BA	FULL MATES
M20	QUERCUS SPINOSA / SPANISH OAK	12" Hx 12" W	BA	FULL MATES
M21	QUERCUS SPINOSA / SPANISH OAK	12" Hx 12" W	BA	FULL MATES
M22	QUERCUS SPINOSA / SPANISH OAK	12" Hx 12" W	BA	FULL MATES
M23	QUERCUS SPINOSA / SPANISH OAK	12" Hx 12" W	BA	FULL MATES
M24	QUERCUS SPINOSA / SPANISH OAK	12" Hx 12" W	BA	FULL MATES
M25	QUERCUS SPINOSA / SPANISH OAK	12" Hx 12" W	BA	FULL MATES
M26	QUERCUS SPINOSA / SPANISH OAK	12" Hx 12" W	BA	FULL MATES
M27	QUERCUS SPINOSA / SPANISH OAK	12" Hx 12" W	BA	FULL MATES
M28	QUERCUS SPINOSA / SPANISH OAK	12" Hx 12" W	BA	FULL MATES
M29	QUERCUS SPINOSA / SPANISH OAK	12" Hx 12" W	BA	FULL MATES
M30	QUERCUS SPINOSA / SPANISH OAK	12" Hx 12" W	BA	FULL MATES
M31	QUERCUS SPINOSA / SPANISH OAK	12" Hx 12" W	BA	FULL MATES
M32	QUERCUS SPINOSA / SPANISH OAK	12" Hx 12" W	BA	FULL MATES
M33	QUERCUS SPINOSA / SPANISH OAK	12" Hx 12" W	BA	FULL MATES
M34	QUERCUS SPINOSA / SPANISH OAK	12" Hx 12" W	BA	FULL MATES
M35	QUERCUS SPINOSA / SPANISH OAK	12" Hx 12" W	BA	FULL MATES
M36	QUERCUS SPINOSA / SPANISH OAK	12" Hx 12" W	BA	FULL MATES
M37	QUERCUS SPINOSA / SPANISH OAK	12" Hx 12" W	BA	FULL MATES
M38	QUERCUS SPINOSA / SPANISH OAK	12" Hx 12" W	BA	FULL MATES
M39	QUERCUS SPINOSA / SPANISH OAK	12" Hx 12" W	BA	FULL MATES
M40	QUERCUS SPINOSA / SPANISH OAK	12" Hx 12" W	BA	FULL MATES
M41	QUERCUS SPINOSA / SPANISH OAK	12" Hx 12" W	BA	FULL MATES
M42	QUERCUS SPINOSA / SPANISH OAK	12" Hx 12" W	BA	FULL MATES
M43	QUERCUS SPINOSA / SPANISH OAK	12" Hx 12" W	BA	FULL MATES
M44	QUERCUS SPINOSA / SPANISH OAK	12" Hx 12" W	BA	FULL MATES
M45	QUERCUS SPINOSA / SPANISH OAK	12" Hx 12" W	BA	FULL MATES
M46	QUERCUS SPINOSA / SPANISH OAK	12" Hx 12" W	BA	FULL MATES
M47	QUERCUS SPINOSA / SPANISH OAK	12" Hx 12" W	BA	FULL MATES
M48	QUERCUS SPINOSA / SPANISH OAK	12" Hx 12" W	BA	FULL MATES
M49	QUERCUS SPINOSA / SPANISH OAK	12" Hx 12" W	BA	FULL MATES
M50	QUERCUS SPINOSA / SPANISH OAK	12" Hx 12" W	BA	FULL MATES

IRRIGATION DESIGN PERFORMANCE TABLE

CONTRACTOR TO FILL IN

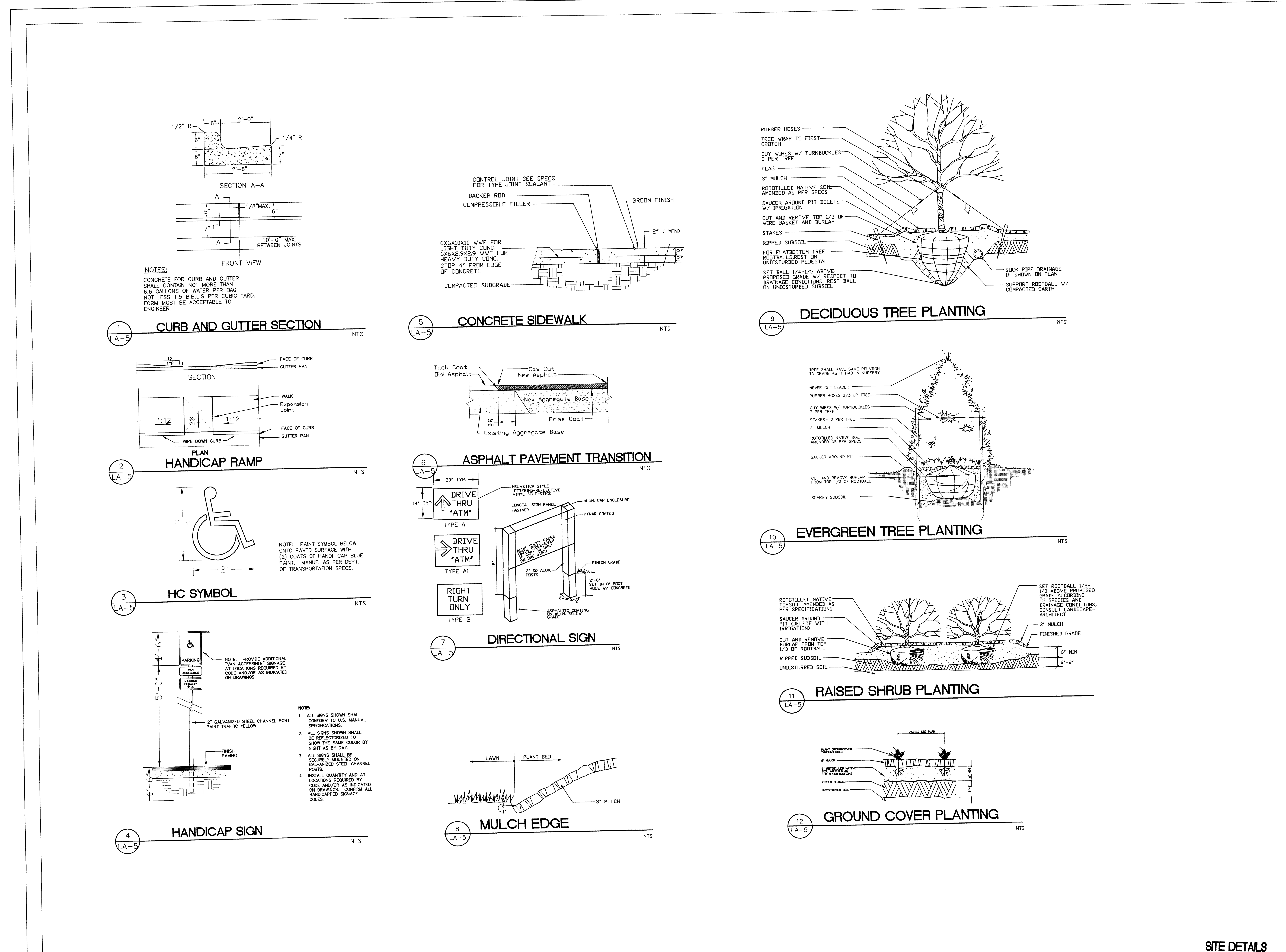
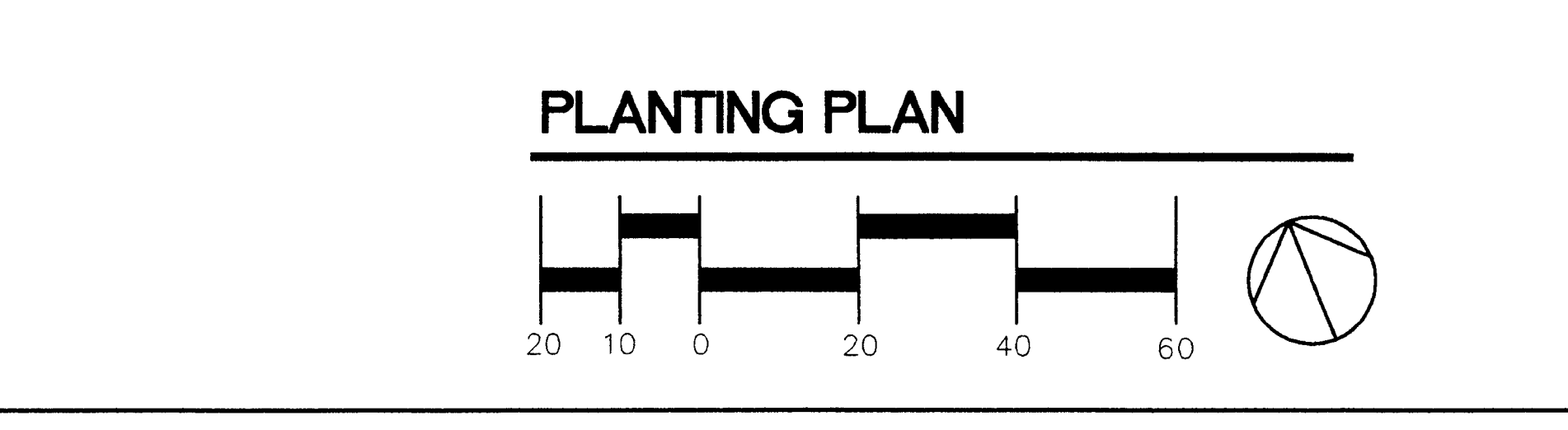
DETAIL	DESIGNER	DATE
DESIGNER		
DATE		

NOTES

- ALL NEW PLANTED AREAS OF SITE ARE TO BE IRRIGATED EXCEPT FOR PLANTING WITHIN THE DESIGNATED BASIN. THE SYSTEM DESIGN IS TO BE SUBMITTED TO THE ARCHITECT FOR REVIEW PRIOR TO INSTALLATION.
- CONTRACTOR TO FIELD VERIFY LOCATION OF ALL UTILITIES PRIOR TO BEGINNING WORK.
- ALL DISTURBED AREAS ARE TO BE STABILIZED WITH SEED, PLANTINGS, OR MULCH.
- MINIMUM TREE SIZE AT PLANTING IS 2-INCH CALIPER FOR SINGLE STEMS. ALL MULTI-STEM PLANTS MUST BE TREE FORM, MAX 3 TO 5 TRUNKS AND MIN 8" DBH.
- ALL STRAPPING AND TOP 2/3 OF WIRE BASKET MUST BE CUT AWAY AND REMOVED FROM PLANTING SITE. REINSTALLING PLANTING SITE REMOVE TOP 1/3 OF THE BASKET FROM ROOTBALL.
- FOR NEW PLANTING AREAS REMOVE ALL PAVED SURFACES AND CONSTRUCTION MATERIAL REMOVE COMPACTED SOIL AND ADD 6" MIN TOPSOIL OR EQUIVALENT AND ADD 2" OF EXISTING SOIL TO MEET TOPSOIL PLANTING SIX STANDARDS FOR TREES.
- LARGE MATURING TREES MUST BE A MIN 25 TO 30 FT FROM OVERHEAD POWER LINES OF TREES CONTACT WITH POWER LINES OR OTHER DANGEROUS OBSTACLES TO BE REMOVED PRIOR TO PLANTING.
- CALL 311-366-4663 FOR AN INSPECTION OF TREE PROTECTION OR TREE PLANTING MANUAL. 1 TO 3 DAYS BEFORE TEMPORARY OR FINAL CERTIFICATE OF OCCUPANCY IS ISSUED.

TREE ORDINANCE SUMMARY:

PROPERTY	TREES REQUIRED	TREES PROVIDED
EXECUTIVE CIRCLE	12	12
REGAL OAKS DRIVE	12	12
ALBEMARLE ROAD	12	12
TOTAL	36	36



PLANTING PLAN

SCALE: 1" = 20'

20 40 60

SITE DETAILS

O'BrienAtkins
Architectural/Engineering/Interior Design

State Employees' Credit Union
Intersection of Albemarle Rd. and Regal Oaks Drive
Charlotte, North Carolina

LA-2

LA-4

LA-5