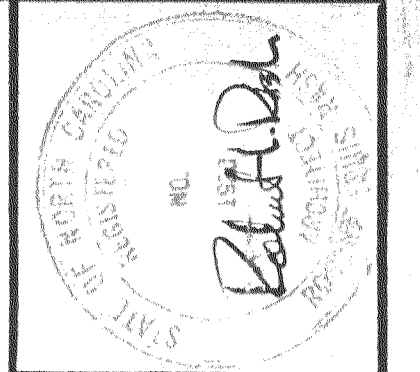
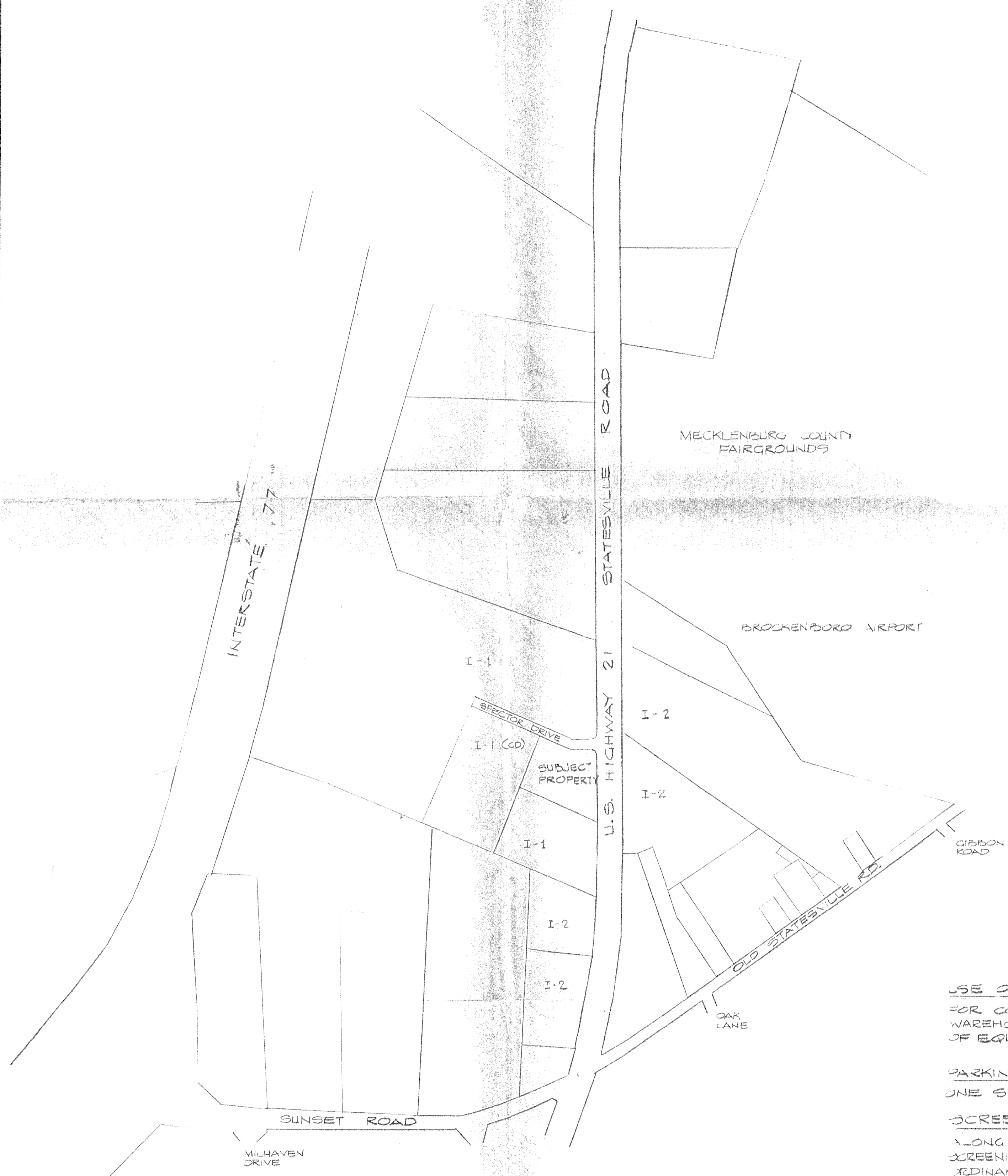


REZONING REQUEST FROM I-1 TO I-2 (CD)



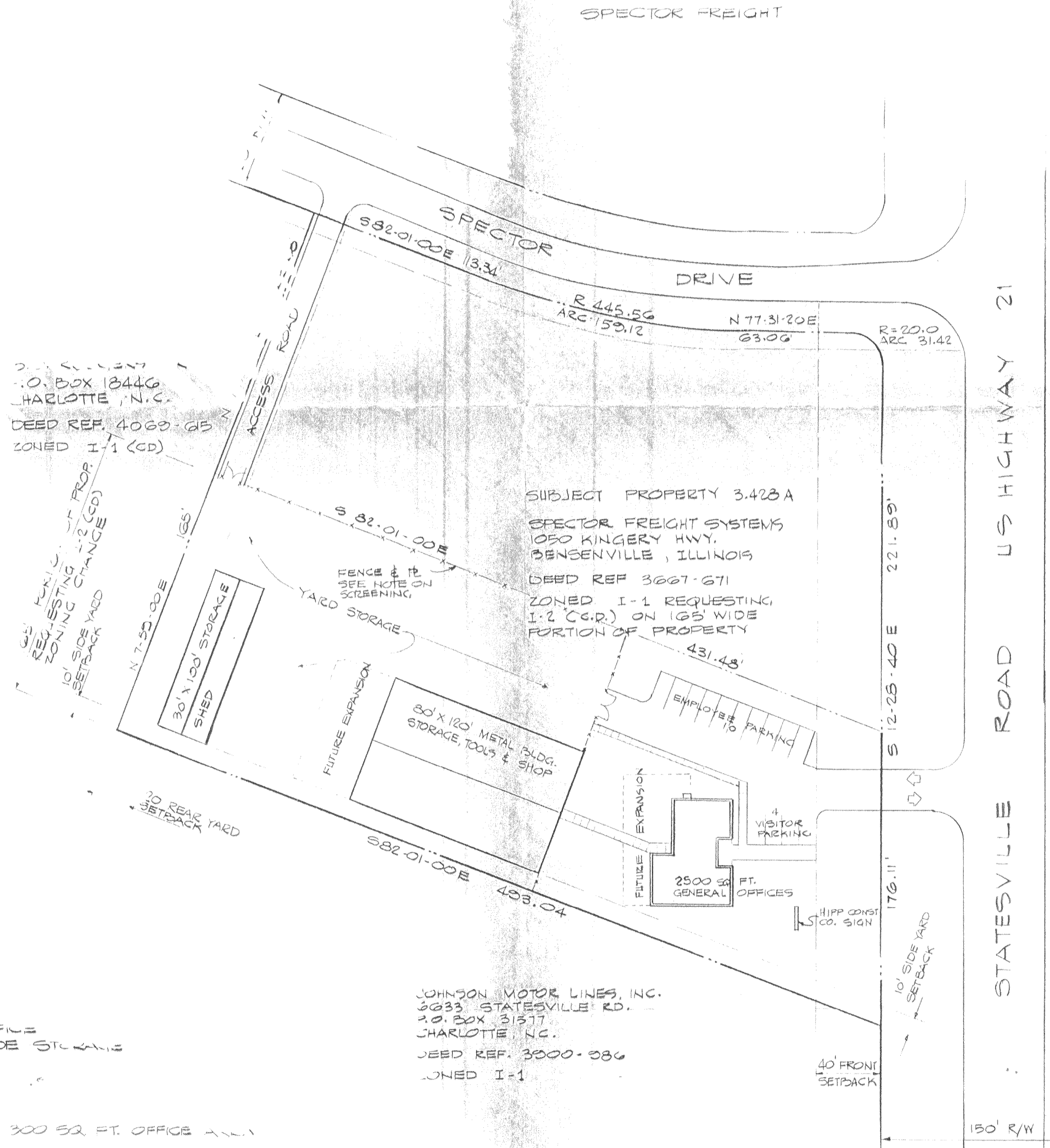
DATE: JULY 79
 PROJECT NO.:
 DRAWN BY: R.L.R.



USE OF PROPERTY:
 FOR CONTRACTORS OFFICE, WAREHOUSE, AND OUTSIDE STORAGE OF EQUIPMENT

PARKING:
 ONE SPACE PER EACH 300 SQ. FT. OFFICE AREA

SCREENING:
 A LONG FENCE LINE ENCLOSEING YARD STORAGE SCREENING TO BE PROVIDED IN ACCORDANCE WITH ORDINANCE 4-26.2



JAMES CLEVELAND WALKER & WIFE AILEEN
 1100 JEFFERSON DRIVE
 CHARLOTTE, N.C.
 DEED REF. 2696-176
 ZONED I-2

1244 EAST BOULEVARD
 CHARLOTTE, N.C. 28203
 PHONE 704/334-8601

R. L. RASH ASSOCIATES ARCHITECTS ENGINEERS

PROPOSED OFFICE & WAREHOUSE FOR HIPP CONSTRUCTION
 CHARLOTTE, N.C.

| | |
|--------------|------------|
| REVISIONS | CHECKED BY |
| ISSUED | |
| SHEET NUMBER | |

79-35(c)
 As Approved by Co. Comm.
 10/15/79