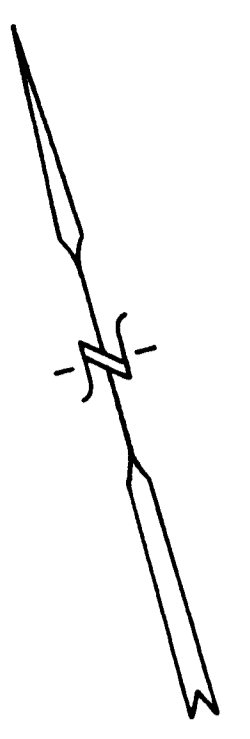


SOUTHERN

I-1

SAMUEL S. WILLIAMS  
4034-979  
2610 N.C.N.B. PLAZA  
CHARLOTTE, N.C. 28280



RAILROAD

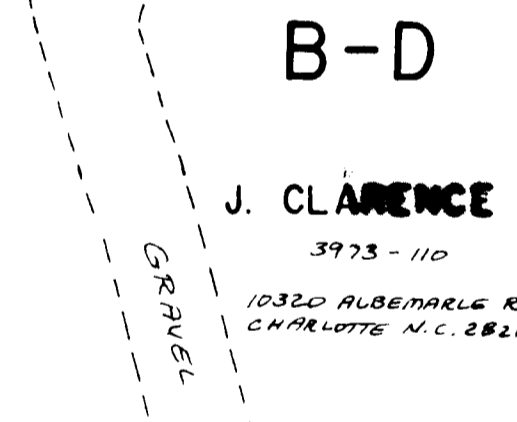
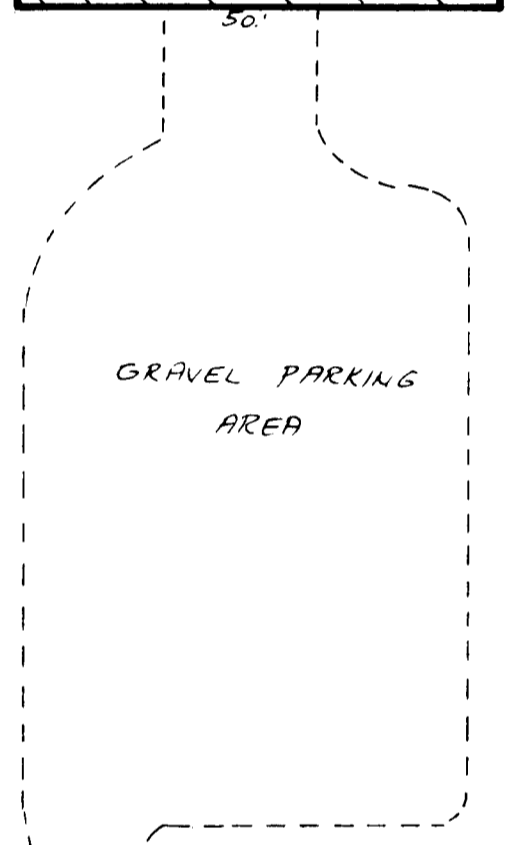
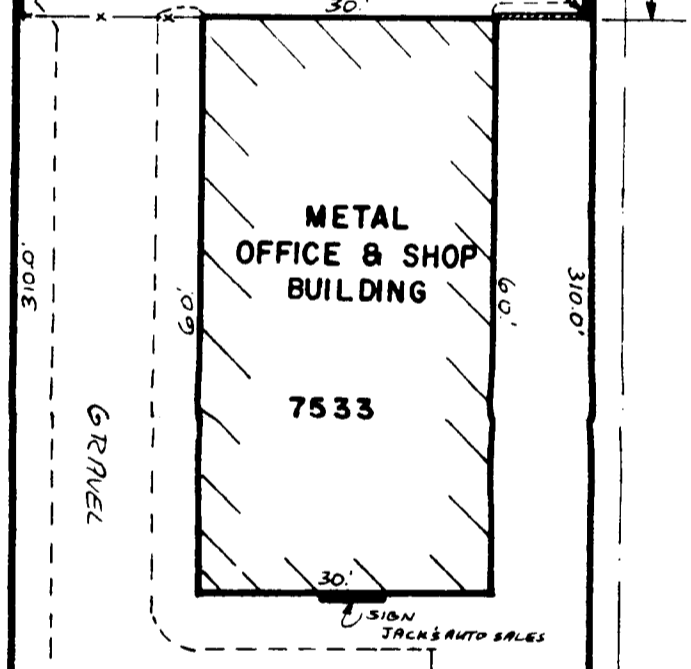
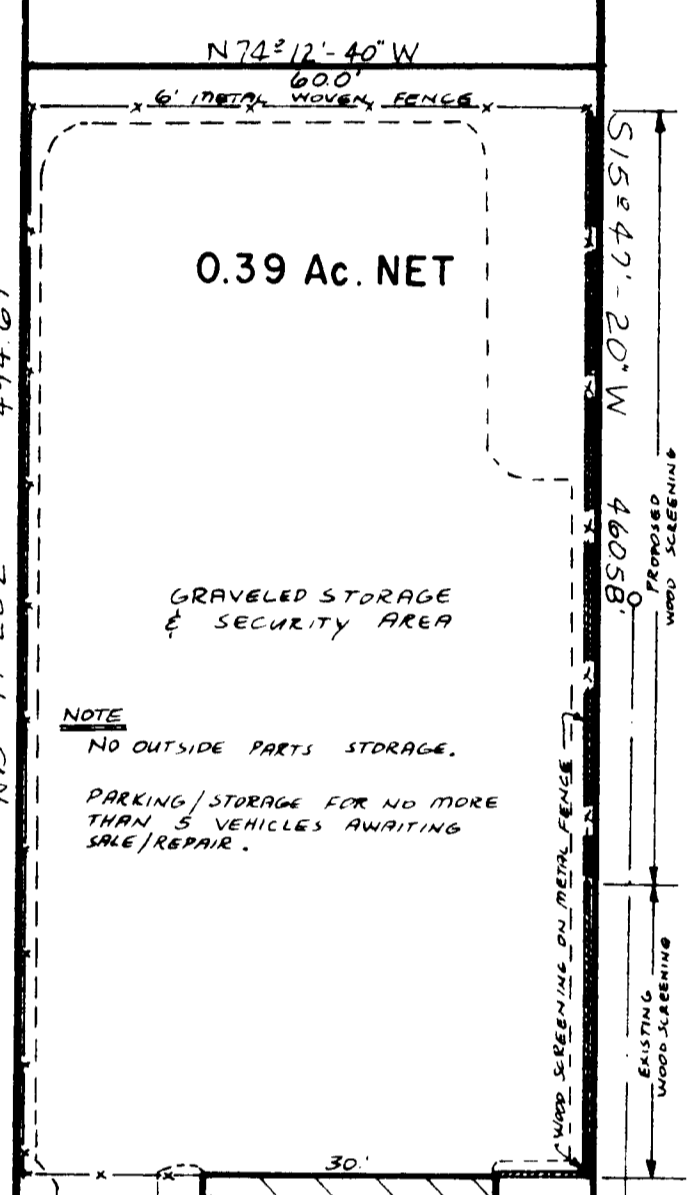
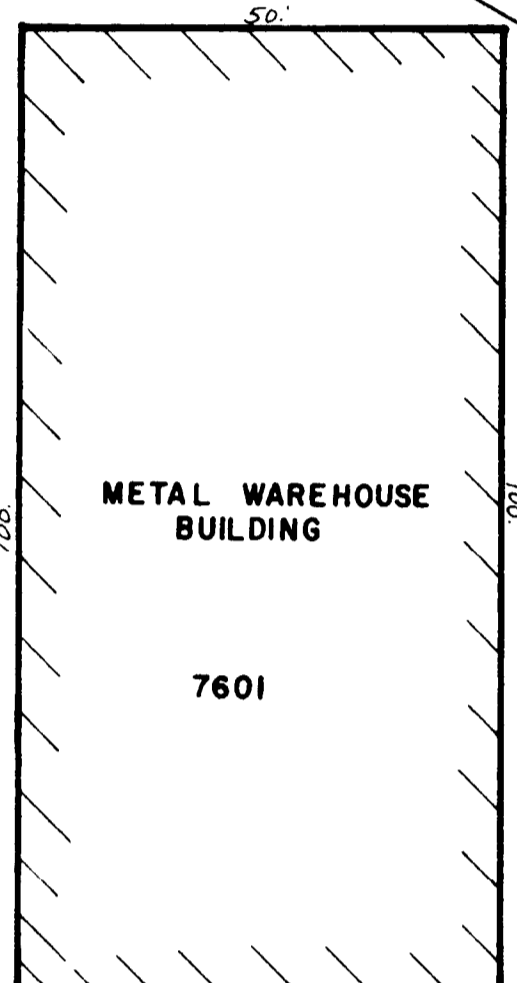
100' R/W

B-D

R D M, Inc.  
4056-506  
5609 MONROE ROAD  
CHARLOTTE, N.C. 28205

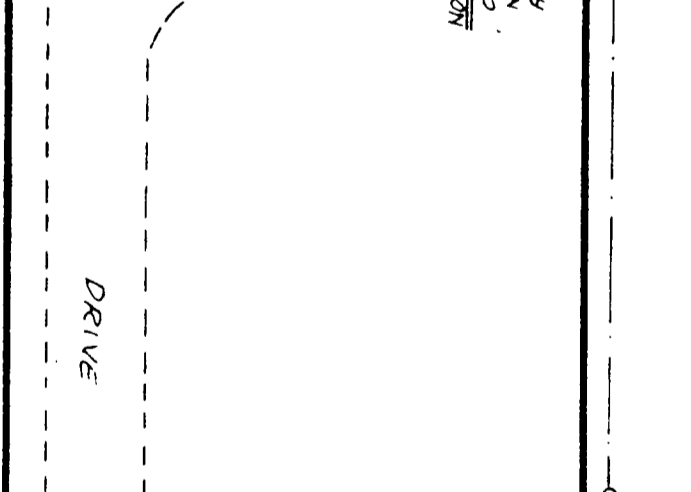
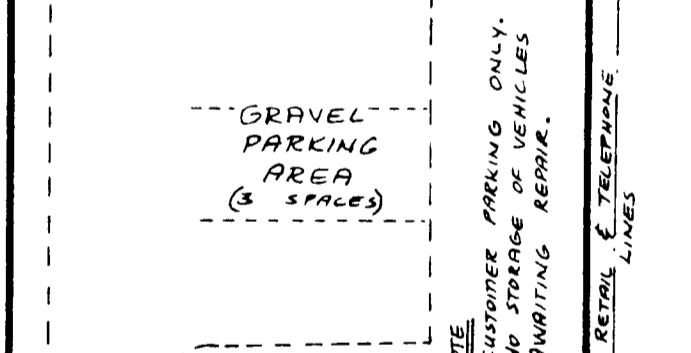
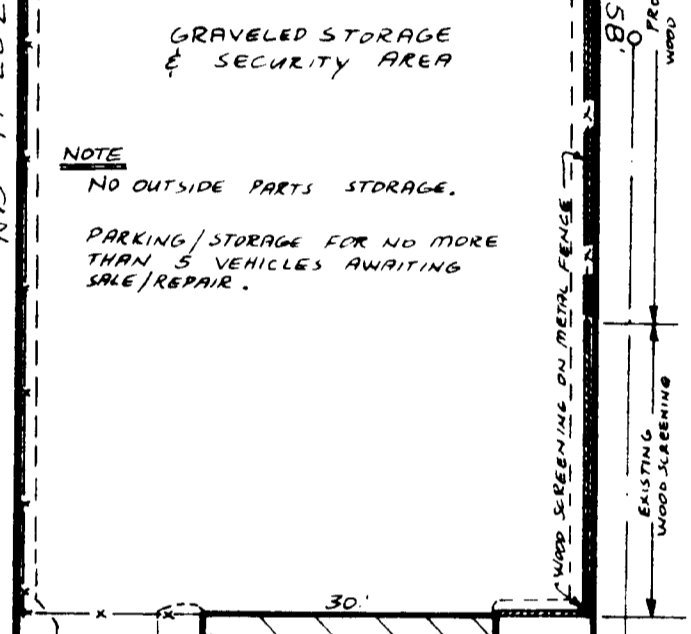
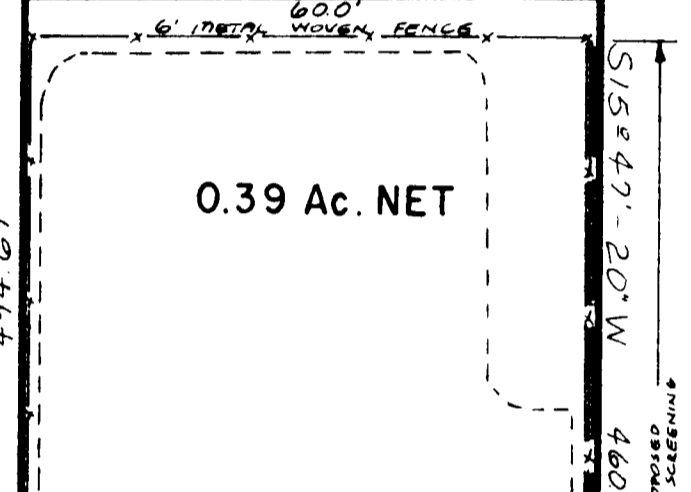
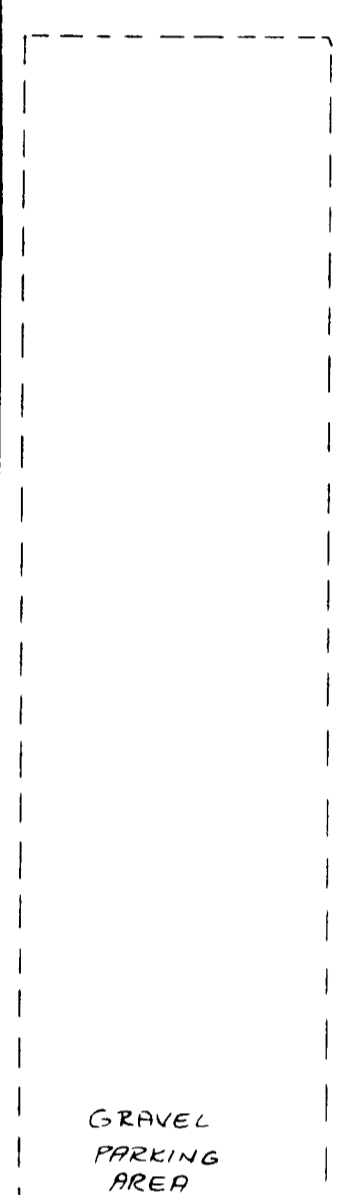
B-D

0.15 Ac. NET



B-D

J. CLARENCE BLANN  
3973-110  
10320 ALBEMARLE ROAD  
CHARLOTTE, N.C. 28212



PENCE

ROAD

As approved by City Council 11/19/79

0-15  
ROBERTS DEV. & CONST. CO., Inc.  
3936-498  
3801 LAKELTON DRIVE  
CHARLOTTE, N.C. 28211

PROPOSED RE-ZONING  
B-D TO B-2(CD)  
FOR  
AUTO DEALERSHIP & REPAIR

THE PROPERTY OF  
FORREST J. AUSTIN, Jr. & WIFE MARY T. AUSTIN  
D. B. 4177 PG. 344  
CHARLOTTE, N. C.



79-55

SCALE: 1"=20'

JULY 21, 1979