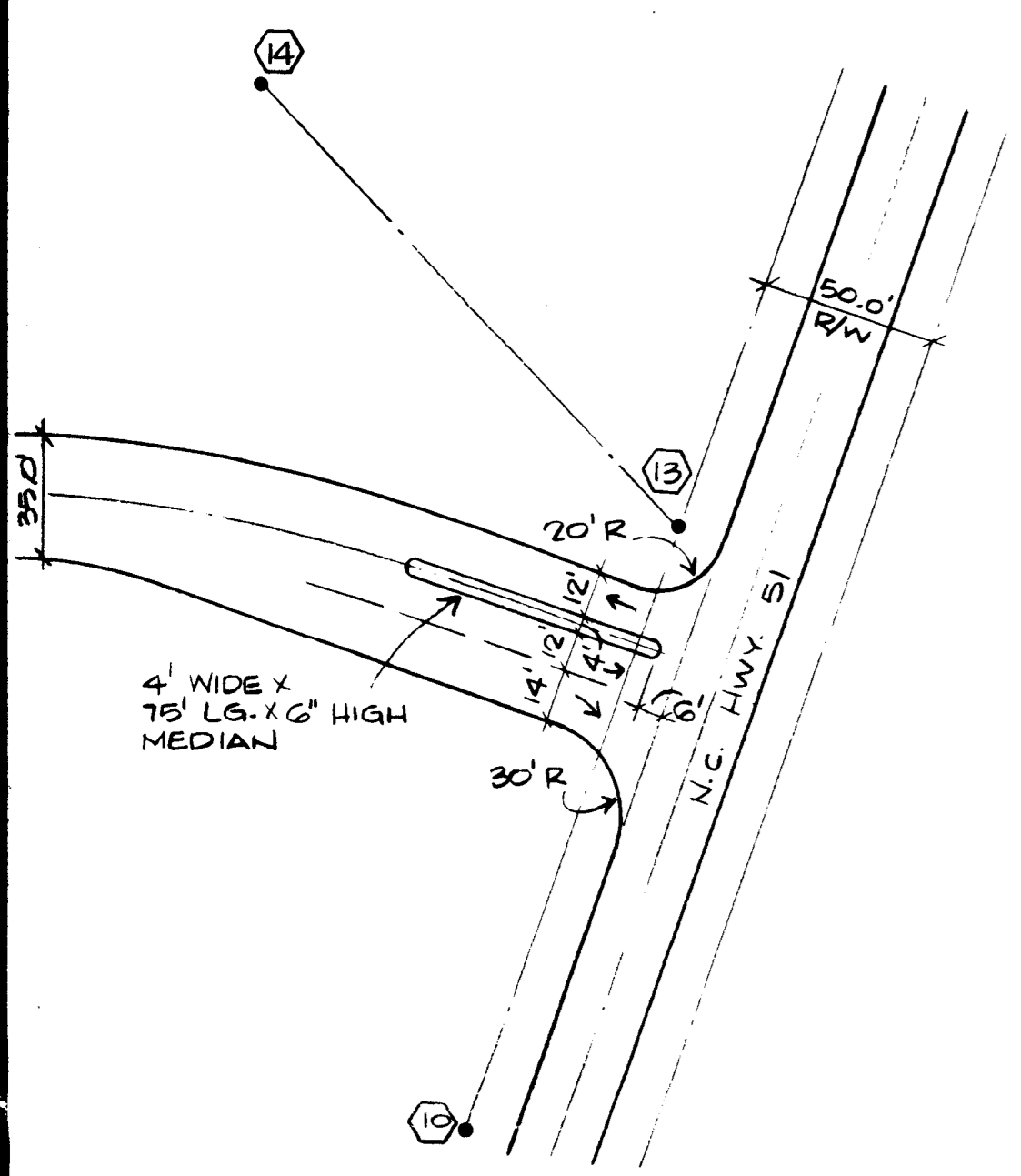
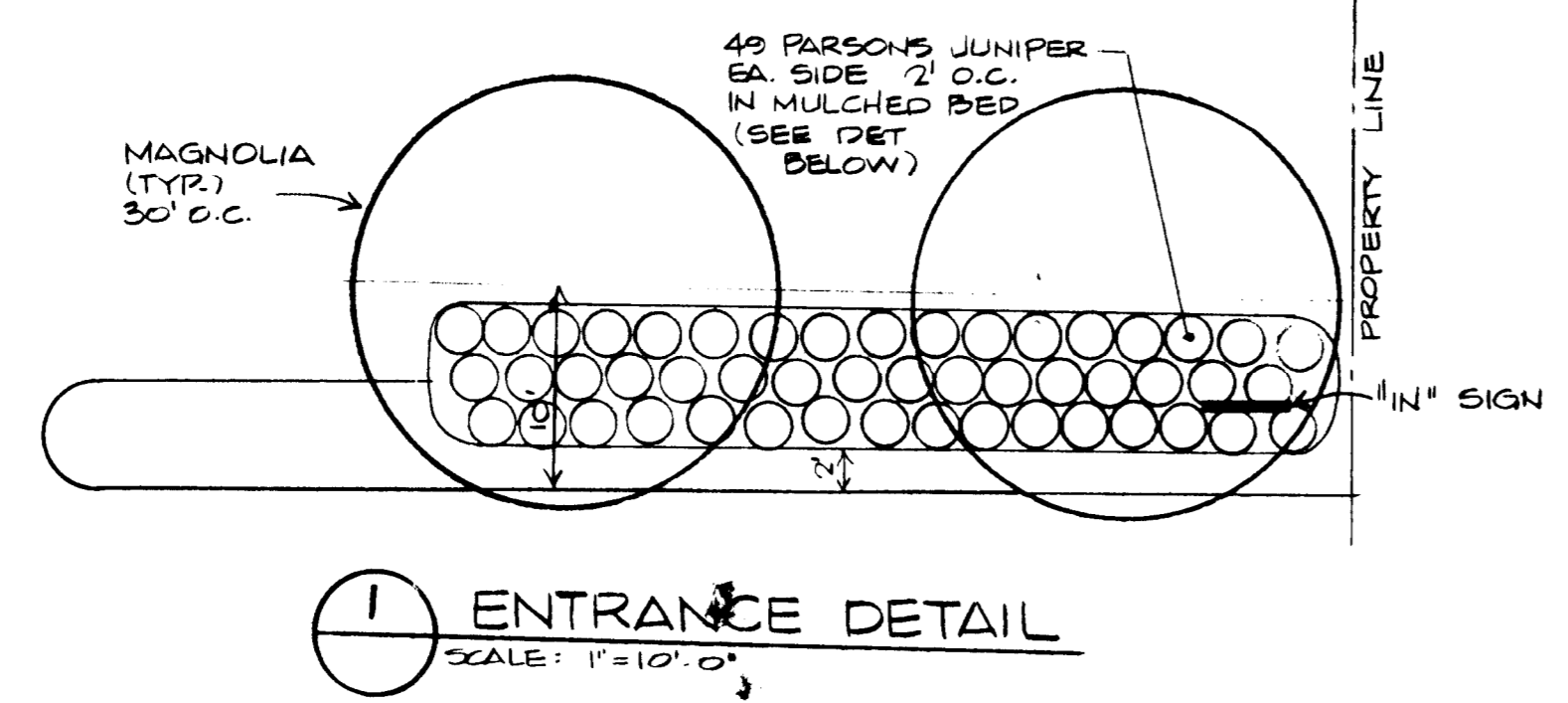


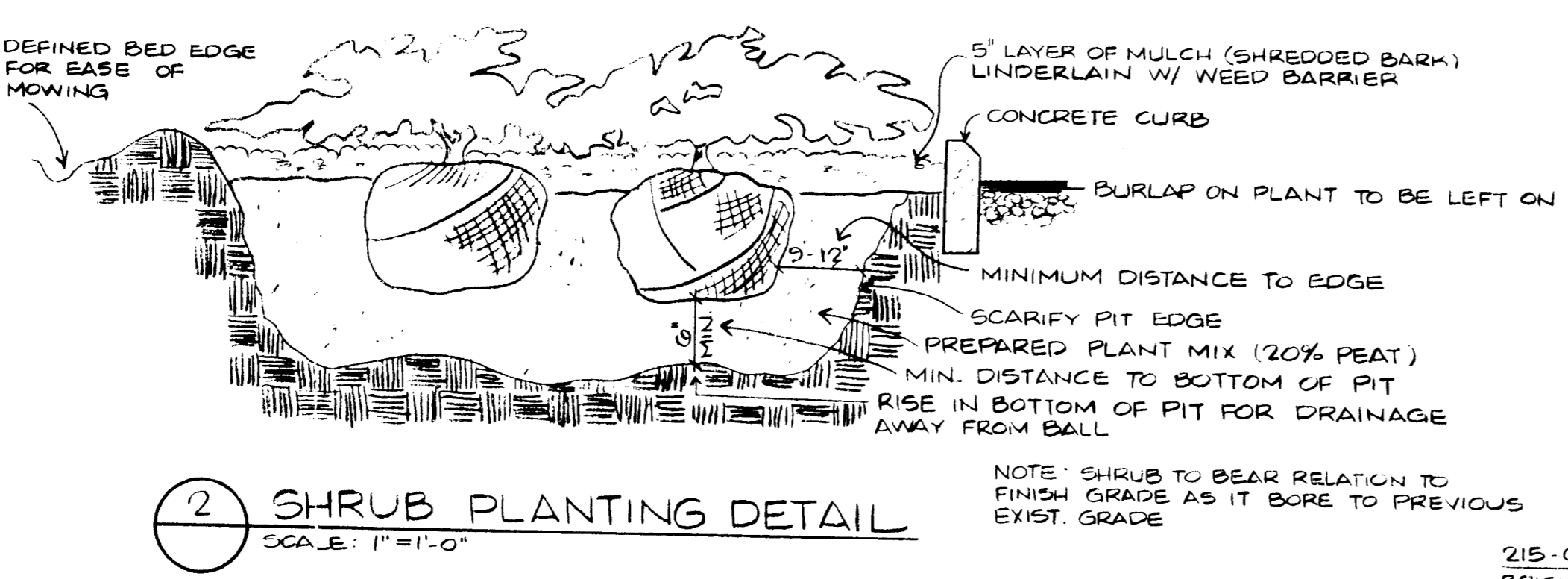
60° PARKING DETAIL



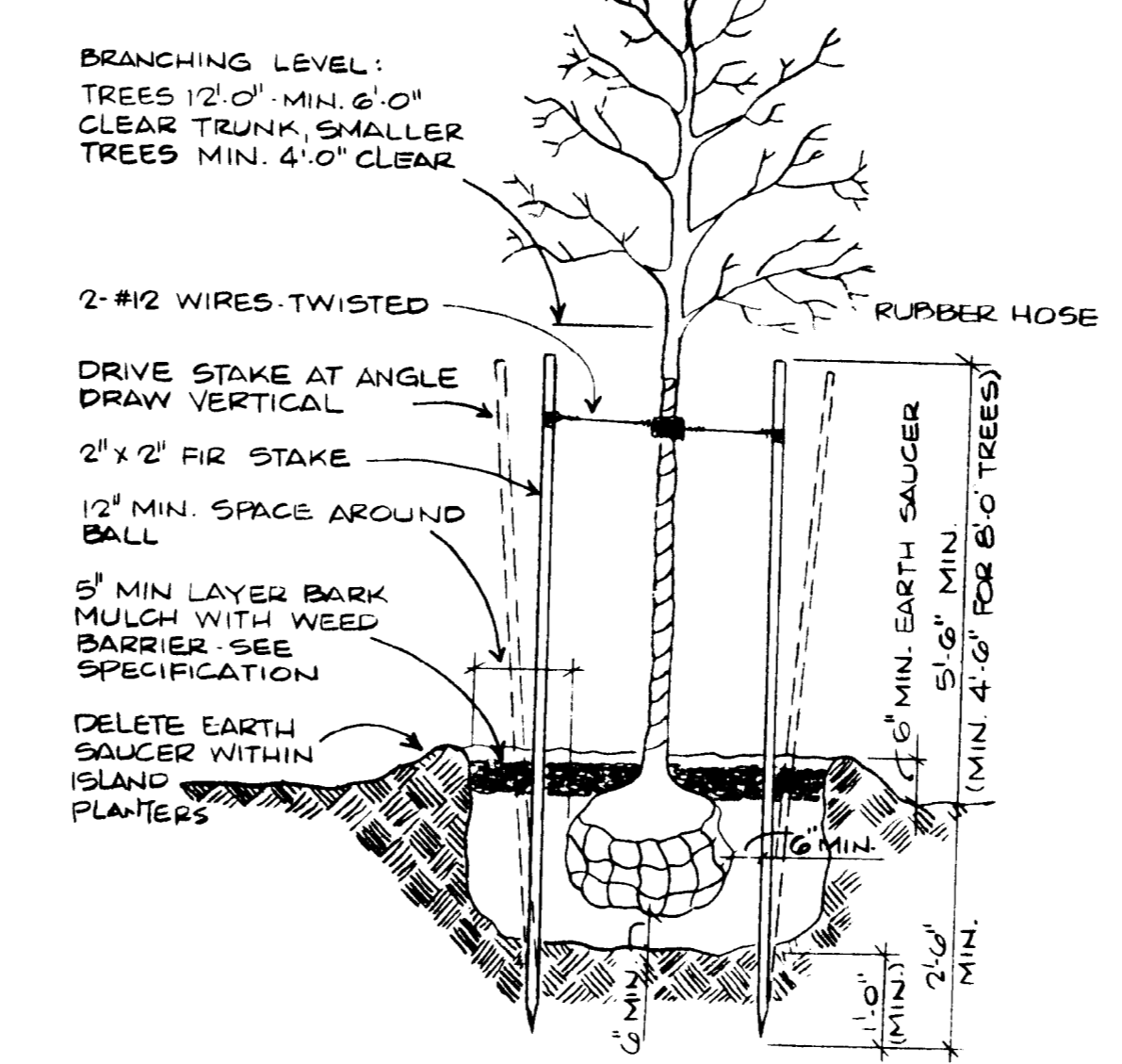
DETAIL "A"



1 ENTRANCE DETAIL
SCALE: 1"=10'-0"



2 SHRUB PLANTING DETAIL
SCALE: 1"=1'-0"



3 TREE PLANTING & GUYING DETAIL
NO SCALE

QUANTITY	BOTANICAL NAME (Common Name)	HEIGHT	SPREAD	CALIPER	REMARKS
12	BETULA NIGRA River Birch	10-12'			3 stems 1-1 1/2 min stems caliper
9	MAGNOLIA GRANDIFLORA Magnolia	12-14'	5'	3-3 1/2"	Standards limbed up from ground strong leader
13	PLANTANUS OCCIDENTALIS American plane tree	12-14'		3-3 1/2"	
98	JUNIPERUS SQUAMATA "PARSONI"	12-15"			Planted 18" in from curbing 2' O.C.
492	PHOTINIA FRASIERI Red tip 'hotinia	3'			

A portion of Parcel "A" containing approximately 12.57 acres and entitled "Brigman" which contains the 35' access easement leading to N.C. Highway 51 is to remain vacant at this time. At the time development is proposed, an amended site plan is to be submitted for approval by the Mecklenburg County Planning Commission.

PARKING SUMMARY

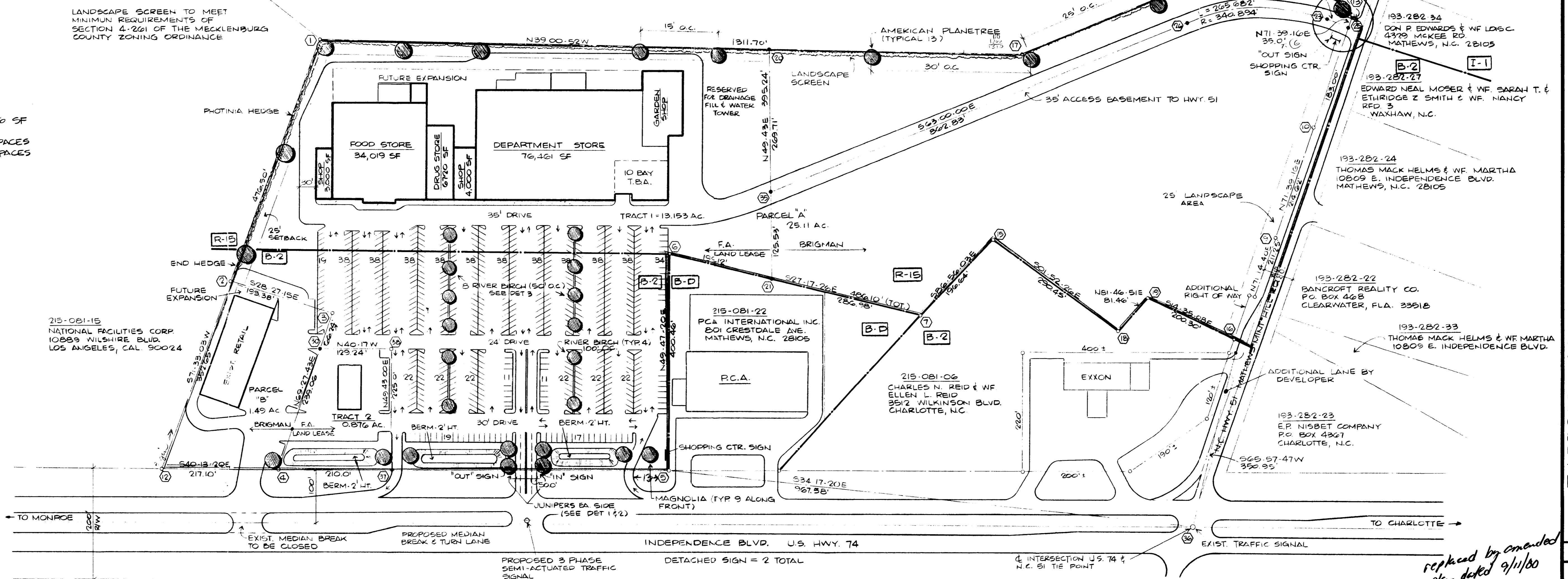
SALES AREA = 22,336 SF
NO. EMPLOYEES = 110
PARKING REQD. = 467 SPACES
PARKING SHOWN = 645 SPACES

ACREAGE SUMMARY

PARCEL "A" 25.11 AC.
PARCEL "B" 1.49 AC.
TOTAL 26.60 AC.

TRACT SUMMARY

TRACT 1 = 13.153 AC.
TRACT 2 = 0.876 AC.
TOTAL 14.029 AC.



PRELIMINARY PLOT PLAN
1"=100'

215-101-06
COSTAS PANOU AND TOM NIXON
11501 E. INDEPENDENCE BLVD.
MATHEWS, N.C. 28105

215-101-10
COSTAS PANOU AND TOM NIXON
11501 E. INDEPENDENCE BLVD.
MATHEWS, N.C. 28105

215-101-05
ALTON WILLIAMSON & WF. JERNESSA
2016 MOORE RD.
MATHEWS, N.C. 28105

215-101-04
POULOS ENTERPRISES, INC. & BILL GALLIS & WF. MARY
1521 EMERYWOOD DR.
CHARLOTTE, N.C. 28210

replaced by amended
plan dated 9/11/00
As Approved by
Co. Comm. 3/5/00

REVISIONS	PROJ. NO.
DATE	OF
DWN BY	CKD BY

DEVELOPERS

FAISON

SHOPPING CENTER
CHARLOTTE, N.C.

FAISON ASSOCIATES

PRELIMINARY
PLOT PLAN

Wachovia Center
Suite 1824
Charlotte, North Carolina 28285
Telephone 704/374-1711