

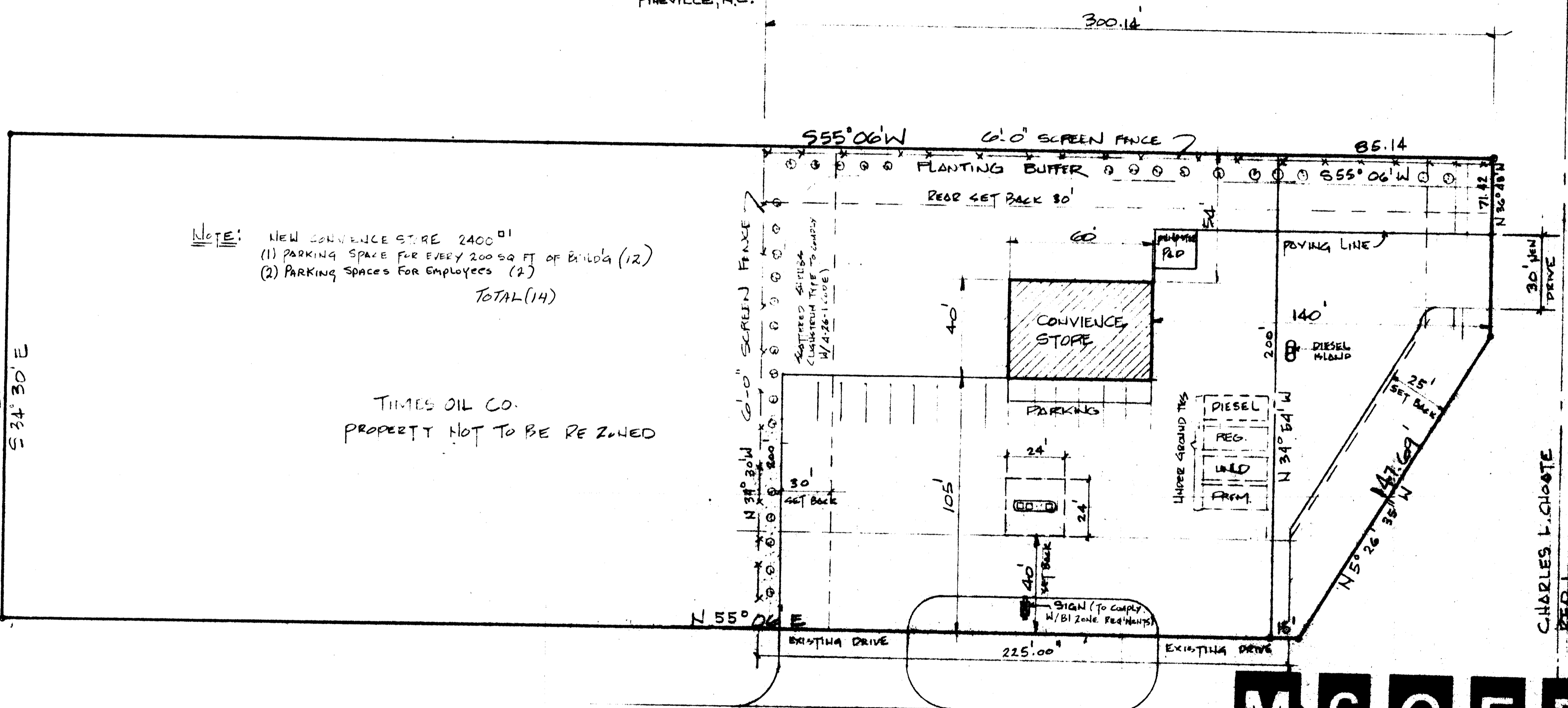
As approved by Co. Comm. 11/17/00

REZONING R-15 TO B-1C0
NEW CONVIENCE STORE GASOLINE SALES
1.25 ACRE(±)
PART OF 219-011-20
ALL OF 219-011-21

JAMES SAMUEL CHOATE
219-011-20
RFD-1
PINEVILLE, N.C.

NOTE: NEW CONVIENCE STORE 2400^{sq} ft
(1) PARKING SPACE FOR EVERY 200 SQ FT OF BUILD'G (12)
(2) PARKING SPACES FOR EMPLOYEES (2)
TOTAL (14)

TIMES OIL CO.
PROPERTY NOT TO BE RE ZONED



CHOATE CIR. (1122)

CHARLES L. CHOATE
RFD-1
PINEVILLE, N.C.
219-061-02

MCGEE
CORPORATION

YORK ROAD (N.C. 49)

KENNETH HENRY WILKERSON
201-221-02
RFD 1
PINEVILLE, N.C.

GUS KANOS
201-221-01
2815 WICKERSHAM RD.
CHARLOTTE N.C.

These prints are property of
the McGee Corporation.
Reproduction or reuse is
prohibited without written
permission

TIMES OIL COMPANY
SCALE: 1" = 30'
DATE: 9/2/00
APPROVED BY: [Signature]
DRAWN BY: GARY DOWNER
RE-ZONING PETITION PLAT
MECKLENBURG COUNTY
DRAWING NUMBER

Received 10/22/00