



William L. Little, Heirs
 059-023-04
 R-9

c/o C. J. Smith
 1210 Terrence Pl.
 Charlotte NC 28209

Dameron C. Owen, Jr.
 wife, Myrtle B.
 059-023-05
 R-9

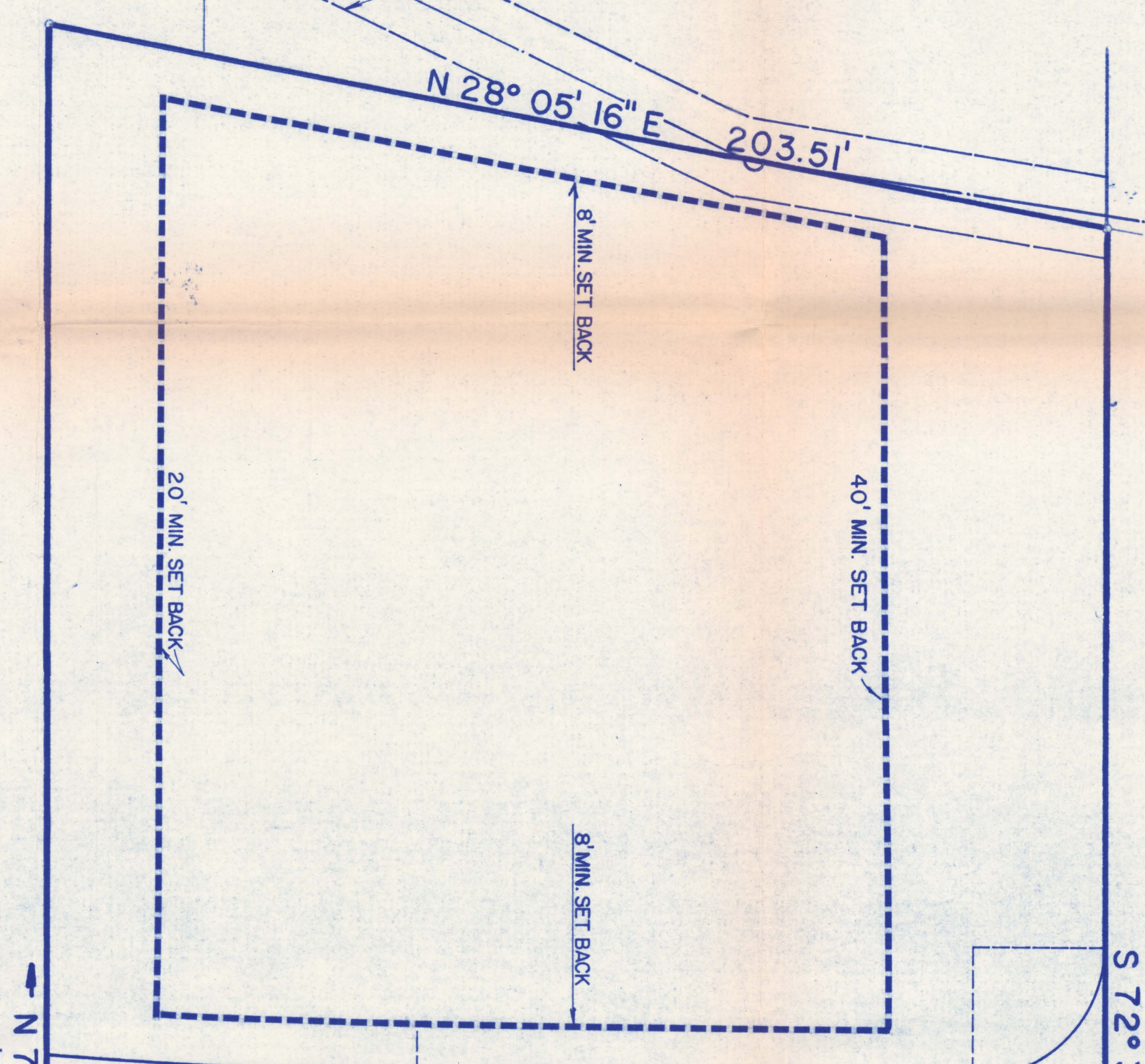
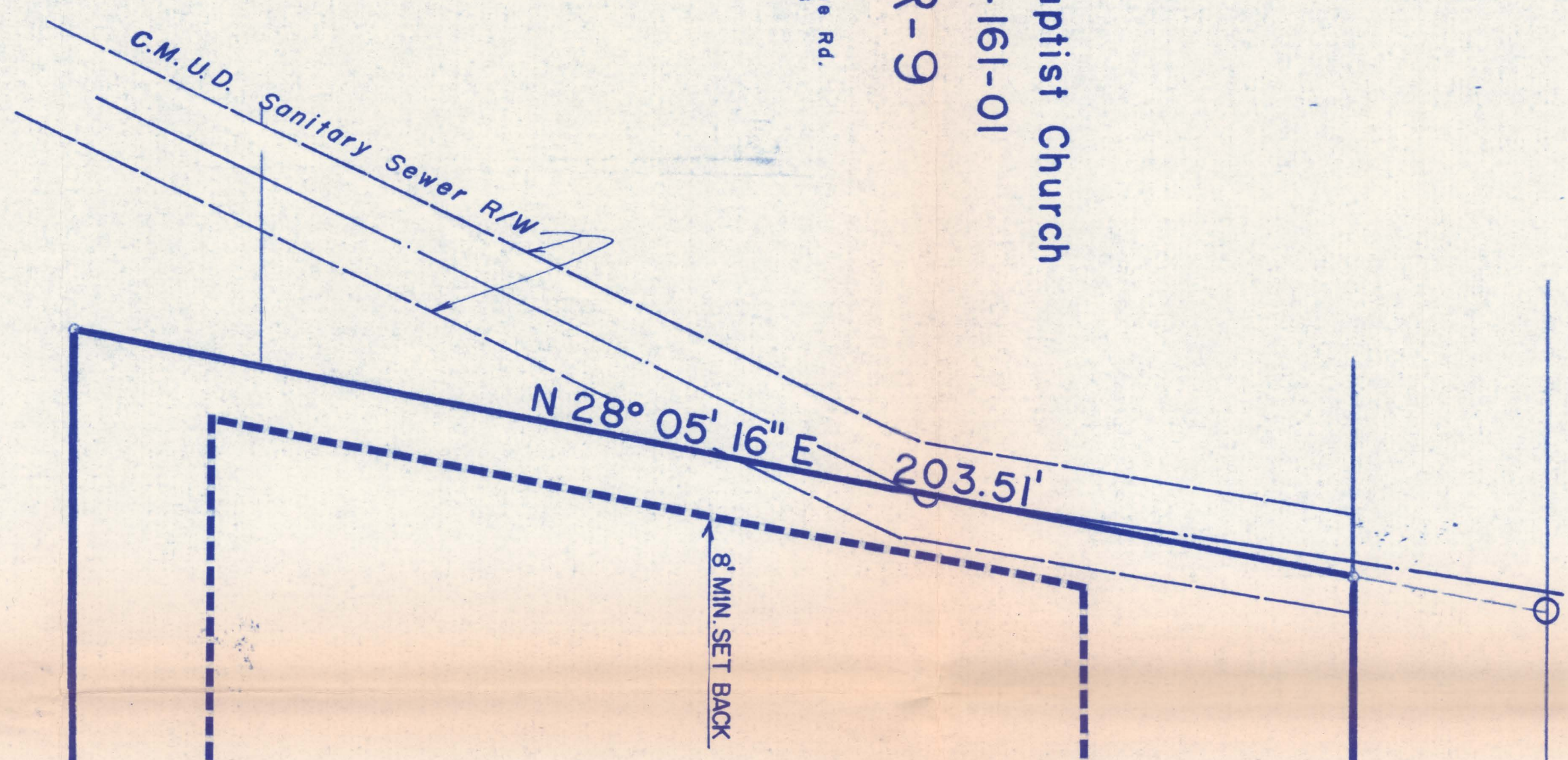
4516 Tuckasegee Rd.
 Charlotte NC 28208

TUCKASEEGEE

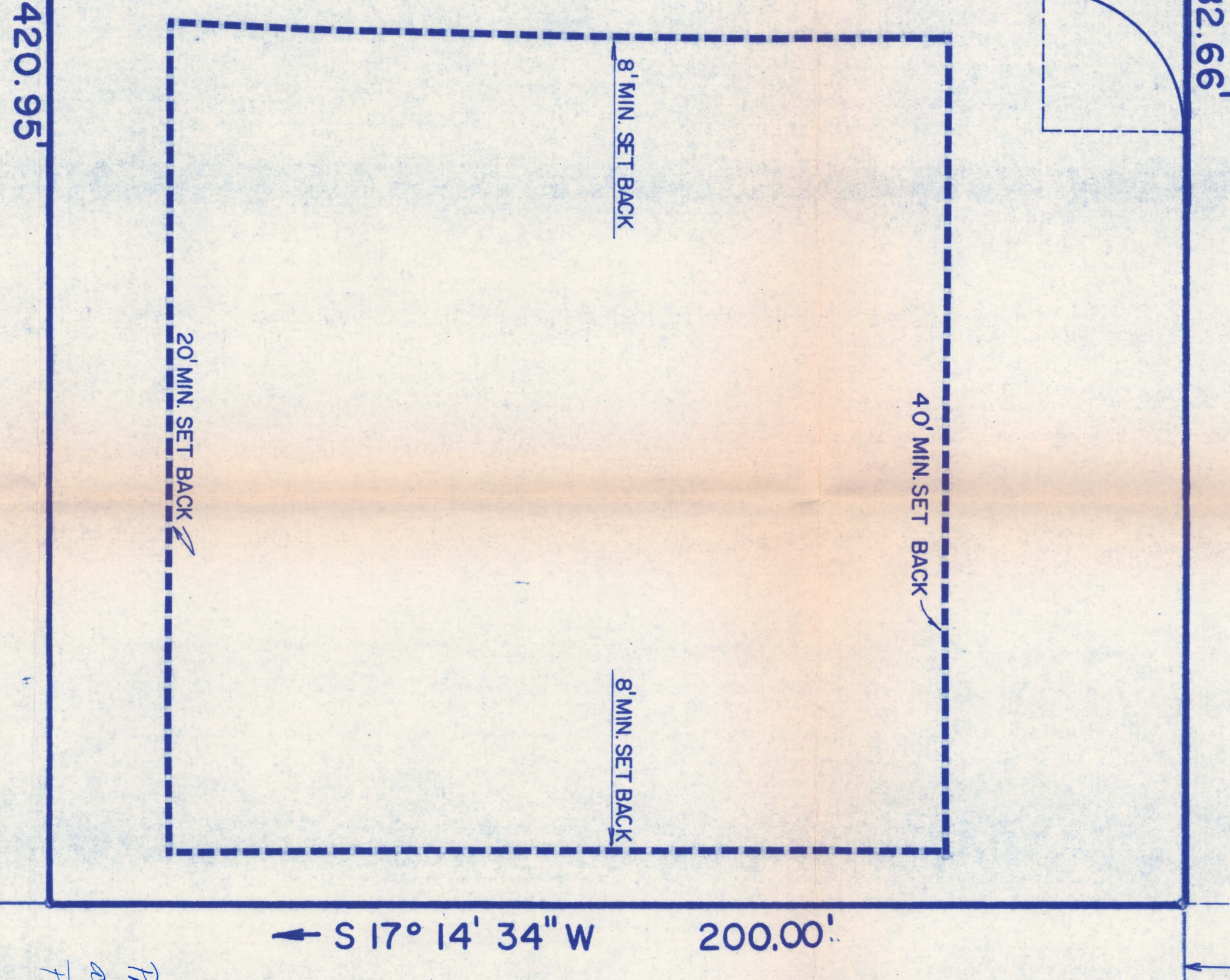
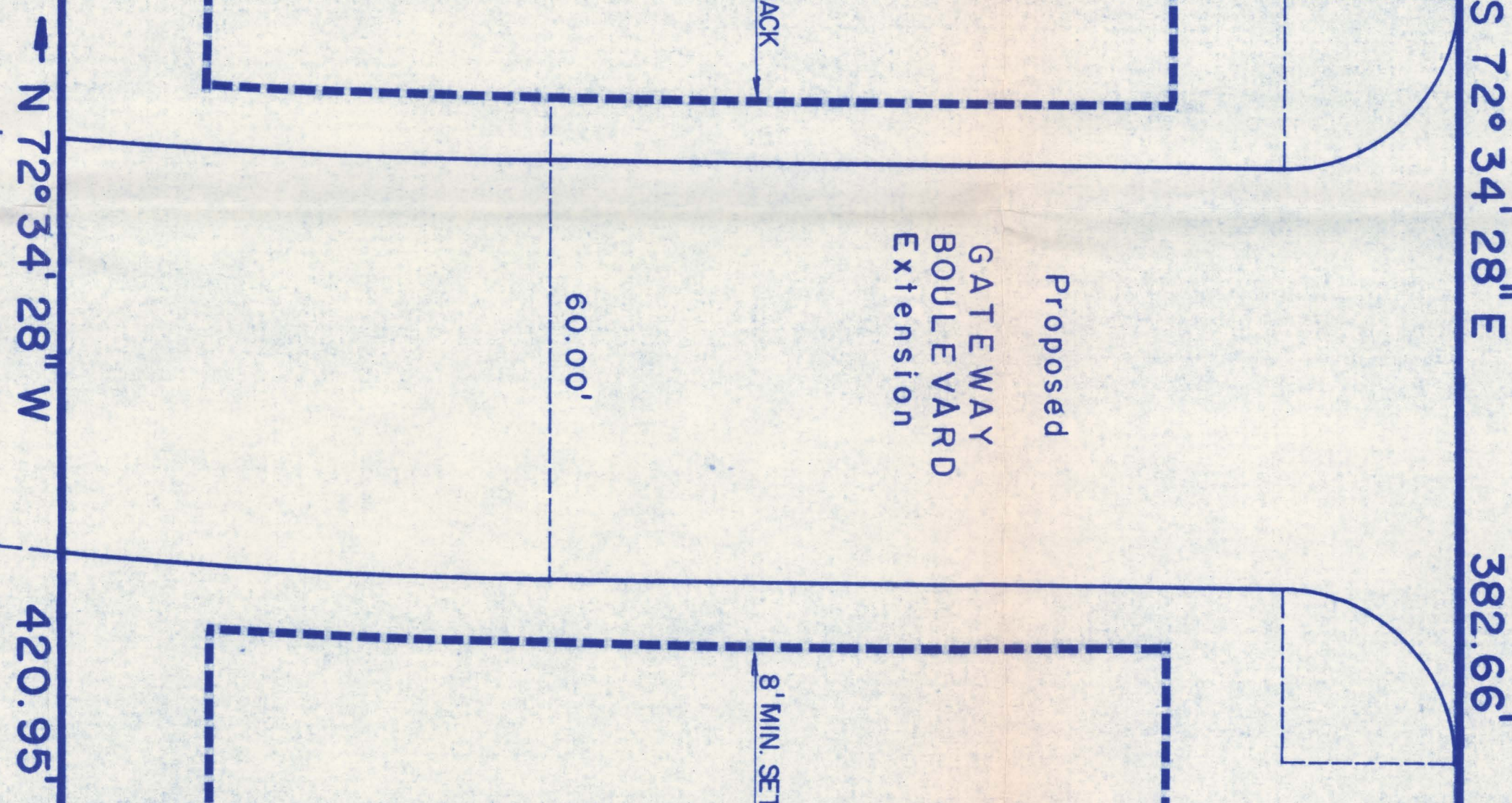
ROAD

R/W
 3000'
 3000'

Bethel Baptist Church
 061-161-01
 R-9
 4801 Tuckasegee Rd.
 Charlotte NC 28208



Proposed
 GATEWAY
 BOULEVARD
 Extension



S 17° 14' 34\"/>

I-1

SYNCO, Inc.
 061-161-02
 I-1

P. O. BOX 34487
 Charlotte NC 28234

I-1

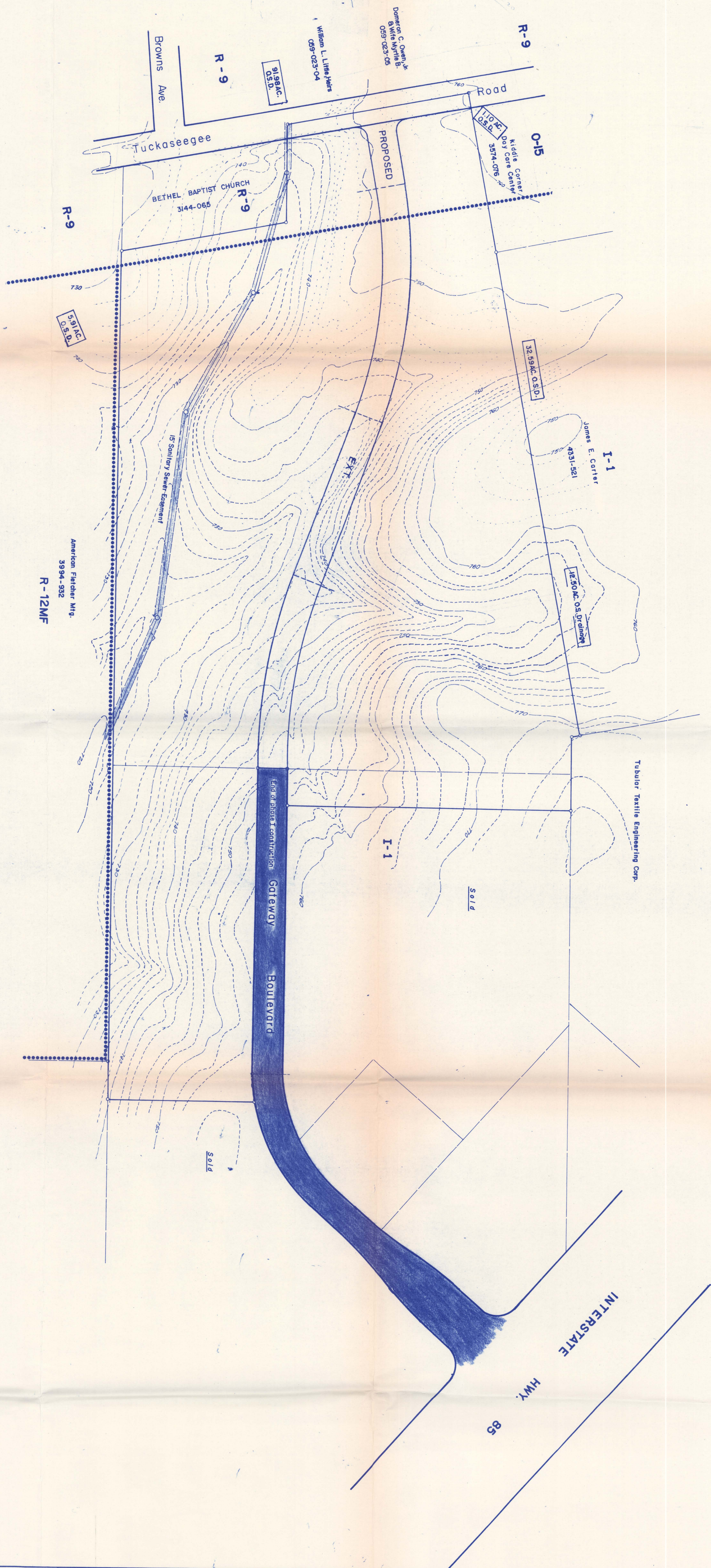
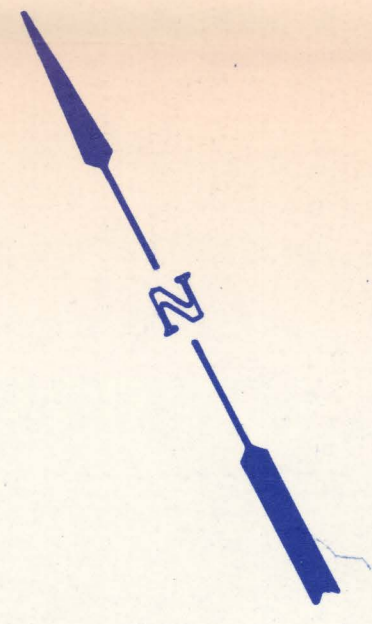
Tract contains 80,361 sq. ft. = 1.845 Acres - Zoned R-9,
 Petition to rezone to O-15 (CD).

Kiddie Corner Day Schools, Inc.
 061-151-08
 O-15
 P. O. BOX 18565
 Charlotte NC 28218

*Property to be used for any purposes permitted in
 an O-15 district with the exception of industrial
 Parkings*

*As approved by City Council
 11/2/81*

ZONING MAP			
CHARLOTTE, NORTH CAROLINA			
SCALE: 1" = 20'	APPROVED BY: <i>[Signature]</i>	DATE: 11/24/80	DRAWN BY: MBS
	PROPERTY OF: SYNCO, INC.		RECEIVED
SPRATT-SEAVEN, INC. Engineers - Planners - Surveyors 2215 Owen St., Suite 103, Charlotte, N.C. 28202			SPAVING NUMBER 80.1109



American Fletcher, Mfg.
3934-932
R-12MF

PHASE II
CENTURY PARK
FOR
SYNCO PROPERTIES INC.
CHARLOTTE, N. C.

SPRATT-SEEVER INC.
ENGINEERS-PLANNERS-SURVEYORS
221 S. CHURCH ST. SUITE 103
CHARLOTTE, N.C.
28202
1/704/372-3146

REVISIONS	DATE	DRAWN BY	CHECKED BY	JOB No.	SHEET No.

OF