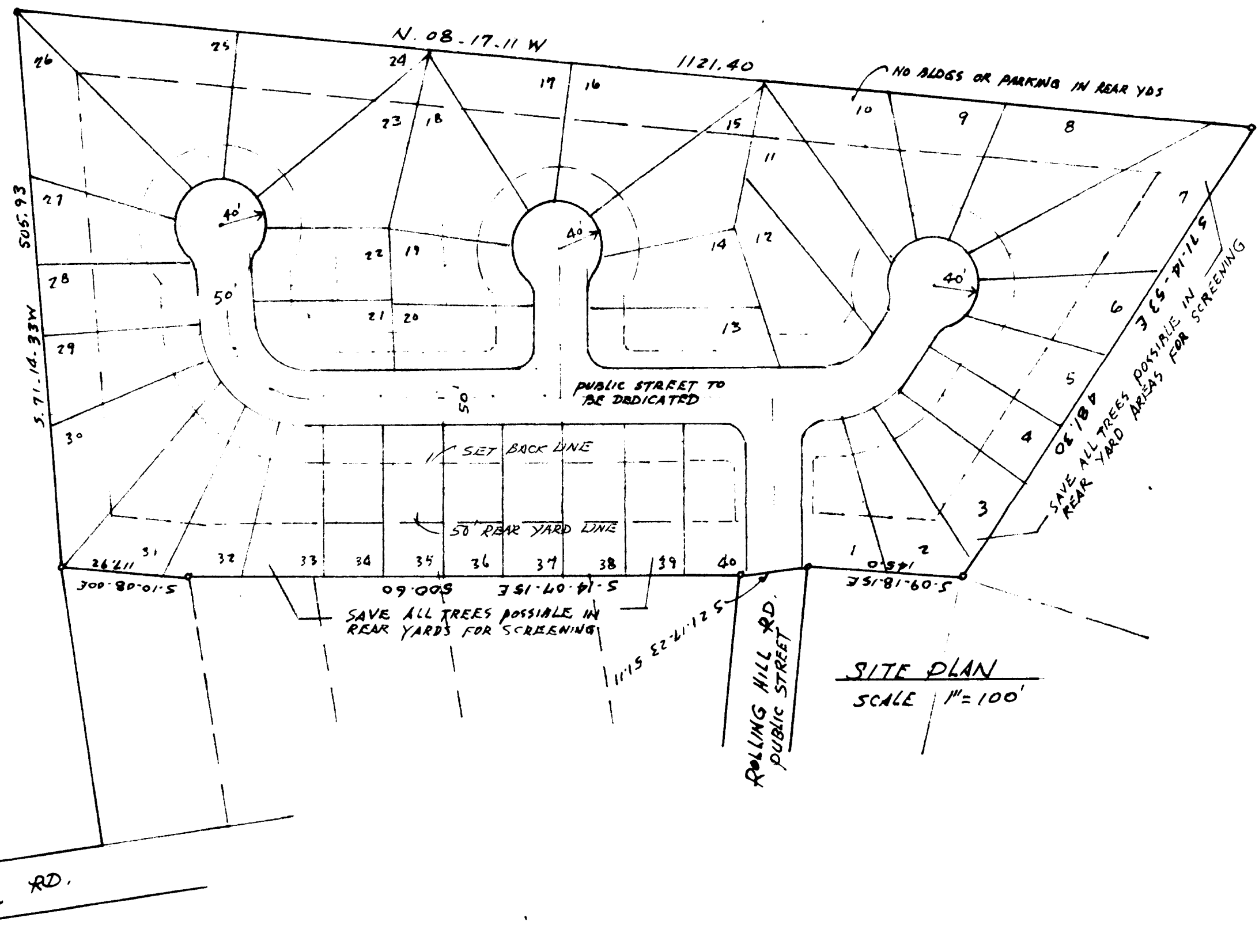


DELTA REALTY CORP.



SITE PLAN  
SCALE 1"=100'

PRESENT ZONING R-20 MF  
(56 UNITS)  
REQUESTED ZONING R-12 MF CD  
(40 LOTS)

1 FAMILY SEMI-DETACHED

MIN. LOT SIZE 7500 S.F.  
SET BACK 35'  
SIDE YARDS 10'  
REAR YARD 50'  
MIN LOT WIDTH 40'

GROSS AREA 10.28 AC  
DEDICATED ST. - 1.30 "  
NET AREA 8.98 AC. (387,248 SF)

$387,248 / 7500 = 51.6$  UNITS ALLOWED

Approved by City Council  
9/20/82

Per # 82-44  
Galaxy Homes, Inc.

DATE	REVISIONS
14 July 82	NOTE ON TREES NO UNITS ALLOWED

PROPOSED DEVELOPMENT  
for  
GALAXY HOMES  
4617 E. INDEPENDENCE BLVD. CHARLOTTE N.C.

HAROLD L. COOLER ASSOCIATES, P.A.  
ARCHITECTS / PLANNERS  
1908 KENILWORTH AVE. CHARLOTTE, NORTH CAROLINA  
MEMBERS OF THE AMERICAN INSTITUTE OF ARCHITECTS

OR DATE  
SHEET NUMBER  
JOB NUMBER  
CHECKED BY  
DRAWN BY  
DATE  
6 MAY 82