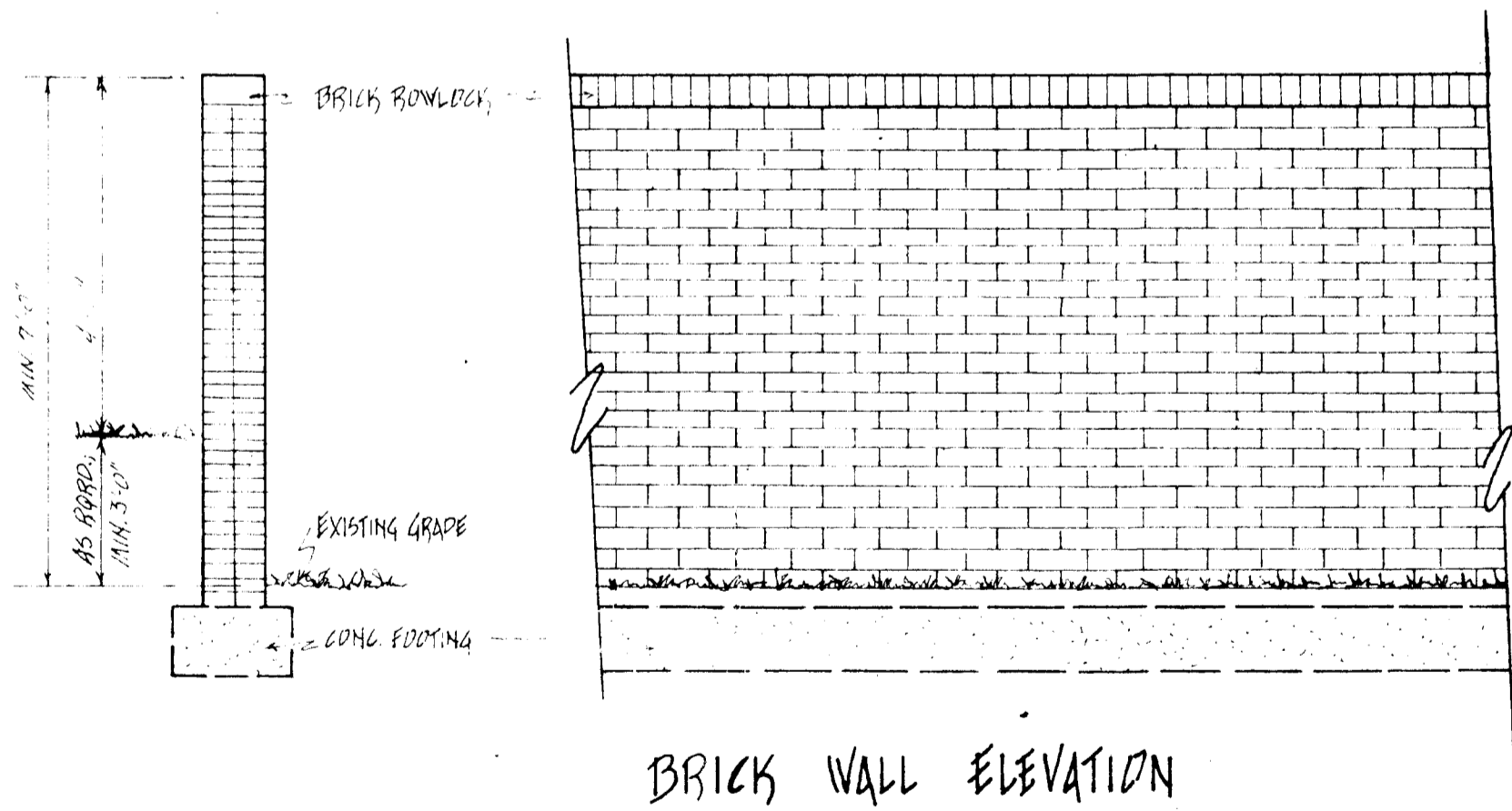


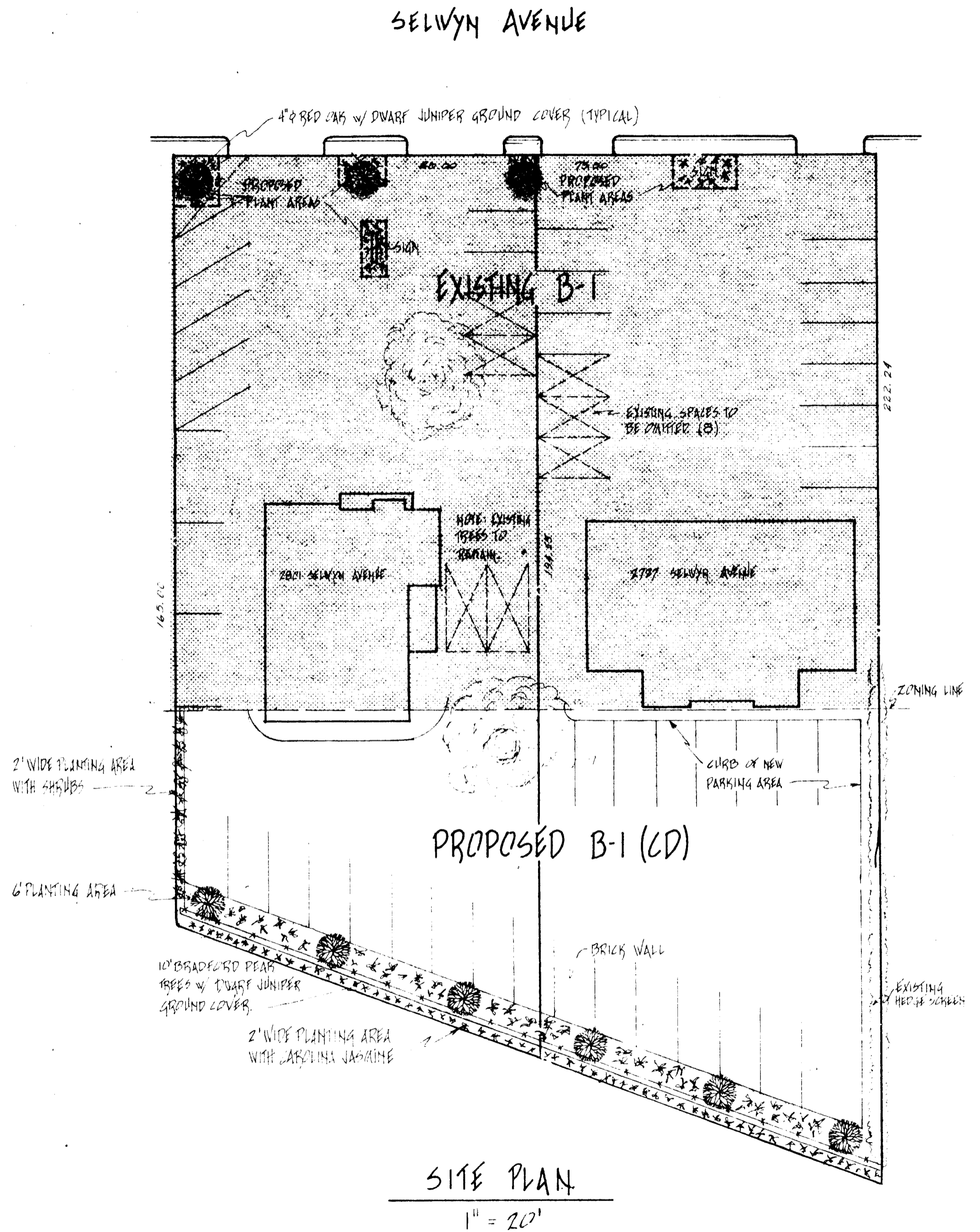
PETITIONER: JOHN HARDING
 PETITION NO: 84-45

NOTE:

EACH OF THE PLANTING AREAS IMMEDIATELY ADJACENT TO SELWYN AVENUE SHALL CONTAIN A 4" $\frac{1}{4}$ " RED OAK TREE.
 B-1 (CD) AREA OF 2727 SELWYN AVE. = 6,629.626 SF (.1622 AC)
 B-1 (CD) AREA OF 2801 SELWYN AVE. = 4,782.000 SF (.1098 AC)
 DRAWING REVISED 5-23-84 TO SUPPLEMENT DETAILS OF PLAN AS SUBMITTED MAY 4, 1984
 DRAWING REVISED 6-15-84 TO ILLUSTRATE BRICK FENCE.
 DRAWING REVISED 6-30-84 TO ILLUSTRATE PARKING PLAN, PLANTING MATERIALS, & 2' WIDE PLANTING AREA AT BRICK WALL.
 DRAWING REVISED 8-2-84 TO ILLUSTRATE 2' PLANTING AREA BEHIND BRICK WALL & 2' PLANTING AREA BETWEEN PROPOSED REZONING AREA & SELWYN CORNERS' PROPERTY.



BRICK WALL SECTION



SITE PLAN

1" = 20'

DATE 9/17/84