

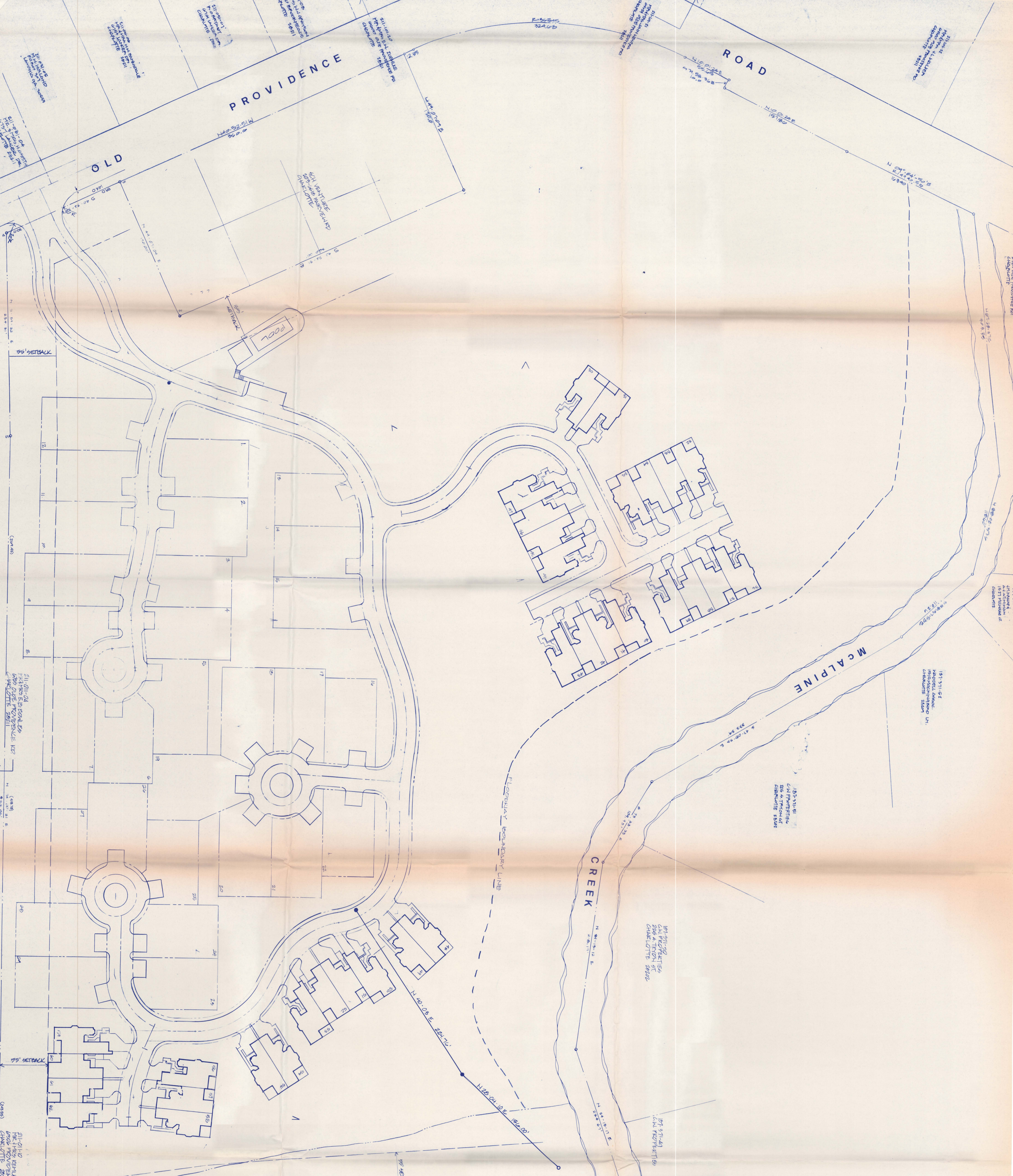
REZONE PETITION

TOTAL ACREAGE 25.955 ac. minus R/W
 ZONING R15 PUD (innovative)

TOTAL UNITS 62
 S.F. DETACHED 29
 TOWNHOUSES 33
 DENSITY 2.38 units/pt.ac.

- REAR YARD TO DWELLING UNIT 10'
- EXTERIOR PROPERTY LINE TO DWELLING UNIT 65'
- SEPARATION BETWEEN GARAGE & S.F. UNITS 10'
- UNIT SETBACK FROM PRIVATE STREET 10'
- MINIMUM SEPARATION BETWEEN BUILDINGS 10'
- NUMBER OF PARKING SPACES 139
- NUMBER OF PARKING SPACES WHICH 33 ARE COVERED

NUMBER OF PARKING SPACES (REID-195)
 139



Date: 15 JUNE 1984
 Revisions:
 WALTER HENDRIX
 R-15 PUD
 Old Providence Road
 PD # 84-53
 Side Plan
 Amendment
 APPROVED BY CITY COUNCIL
 DATE 8/14/84
LAND DESIGN, INC.
 Landscape Architects
 1701 East Boulevard
 Charlotte, NC 28203
 Telephone: 704 333-0323
 Project No. 224
 Sheet No. of