

MEADOWS APARTMENTS 178 UNIT

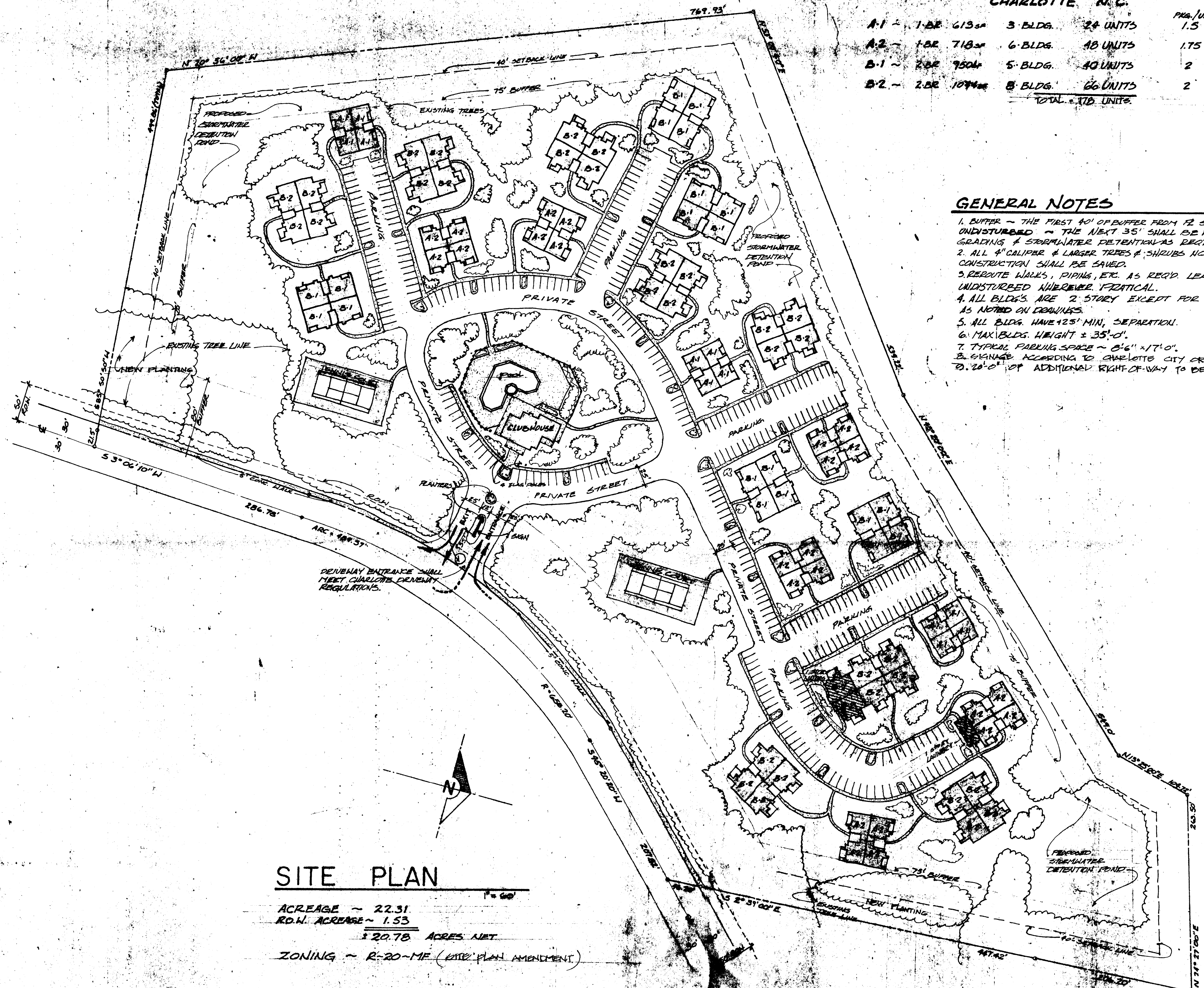
CHARLOTTE N.C.

TYPE	SIZE	BLDG.	UNITS	PKG./UN.	PKG. REQ'D.
A-1	1-BR 613sq	3 BLDG.	24 UNITS	1.5	36
A-2	1-BR 718sq	6 BLDG.	48 UNITS	1.75	84
B-1	2-BR 950sq	5 BLDG.	40 UNITS	2	80
B-2	2-BR 1074sq	8 BLDG.	66 UNITS	2	132
			TOTAL 178 UNITS		

332 ~ PKG. SPACES REQ'D.
335 ~ PROVIDED

GENERAL NOTES

1. BUFFER - THE FIRST 40' OF BUFFER FROM PZ SHALL BE UNDISTURBED - THE NEXT 35' SHALL BE FOR GITE GRADING & STORMWATER DETENTION AS REQ'D.
2. ALL 4" CALIBER & LARGER TREES & SHRUBS NOT DIRECTLY AFFECTED BY CONSTRUCTION SHALL BE SAVED.
3. REROUTE WALKS, PIPING, ETC. AS REQ'D. LEAVING NATURAL VEGETATION UNDISTURBED WHEREVER FEASIBLE.
4. ALL BLDG'S ARE 2 STORY EXCEPT FOR CLUBHOUSE & OTHER BLDGS AS NOTED ON DRAWINGS.
5. ALL BLDG'S HAVE 125' MIN. SEPARATION.
6. MAX BLDG. HEIGHT ± 35'-0".
7. TYPICAL PARKING SPACE ~ 8'-6" x 17'-0".
8. SIGNAGE ACCORDING TO CHARLOTTE CITY ORDINANCE.
9. 20'-0" OF ADDITIONAL RIGHT-OF-WAY TO BE DEDICATED.



SITE PLAN

ACREAGE ~ 22.31
 R.O.W. ACREAGE ~ 1.53
 20.78 ACRES NET
 ZONING ~ R-20-ME (SITE PLAN AMENDMENT)

APPROVED BY CITY COUNCIL
 DATE 9/17/84

MEADOWS APARTMENTS
 178 UNITS
 CHARLOTTE
 ALBEN CAROLINA

DRAWN	
CHECKED	
DATE	8-14-84
SCALE	
JOB NO.	
SHEET	
OF	SHEETS