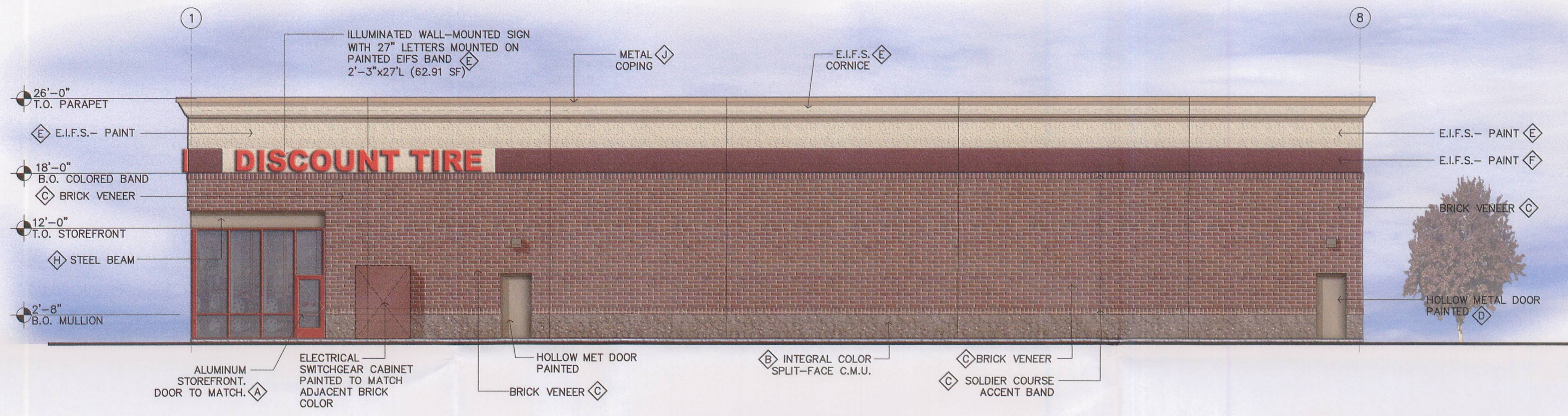


WEST ELEVATION
SCALE: 1/8" = 1'-0"

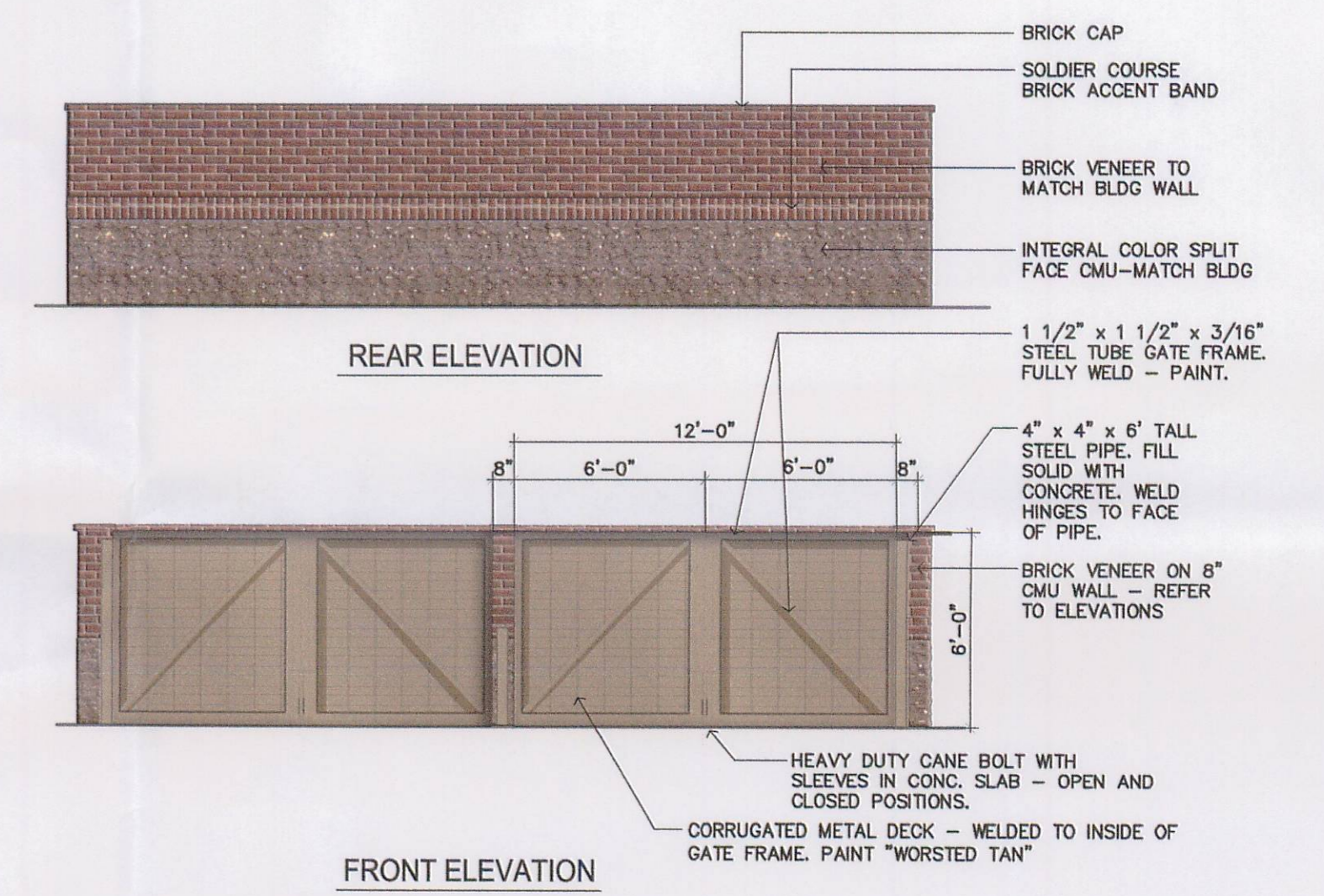


EAST ELEVATION (E. Independence Blvd)
SCALE: 1/8" = 1'-0"

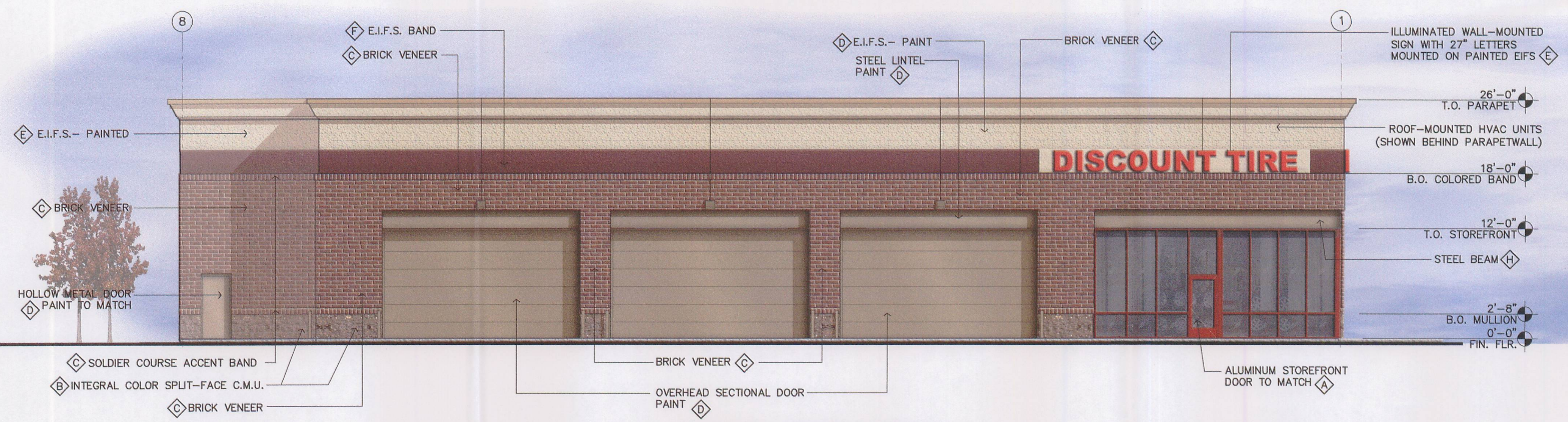
FINISH LEGEND	
A	MANUFACTURER'S STANDARD COLOR TO MATCH "BANNER RED"
B	INTEGRAL COLOR C.M.U. (SPLIT-FACE), BETCO SUPREME COLOR: #4-8358, 8"x8"x16"
C	BRICK VENEER - HANSON BRICK, WIRE CUT (STANDARD) COLOR: LAFAYETTE (1562)
D	PAINT - SHERWIN WILLIAMS TO MATCH "WORSTED TAN"
E	PAINT - SHERWIN WILLIAMS, SW 6119 "ANTIQUÉ WHITE"
F	PAINT - SHERWIN WILLIAMS TO MATCH "BURGUNDY"
G	SPARE
H	EXPOSED STEEL - PAINTED TO MATCH "WORSTED TAN"
J	METAL COPING - FACTORY PAINTED/INTEGRAL COLOR TO MATCH PAC-CLAD "CHAMPAGNE" COLOR



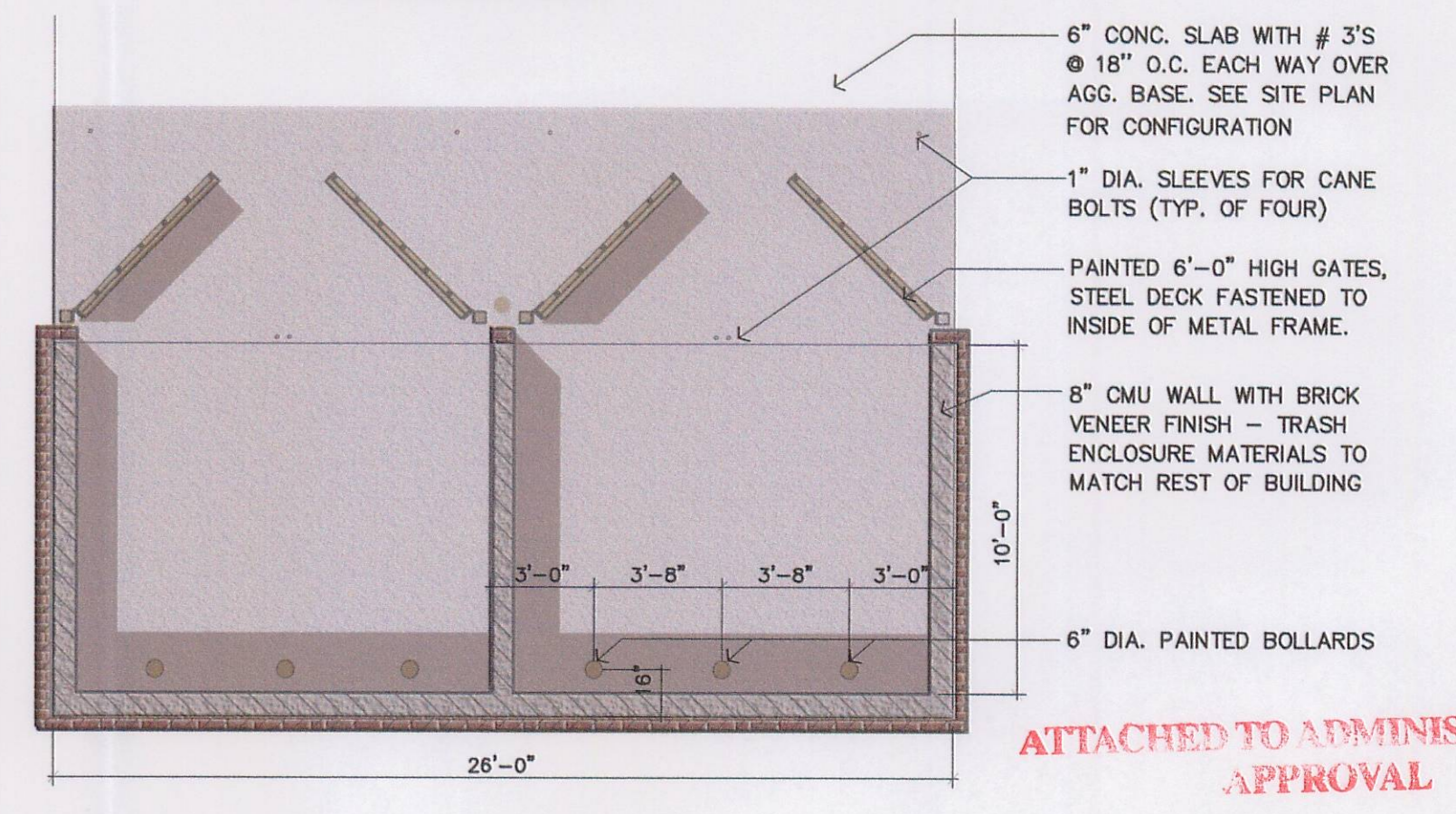
NORTH ELEVATION
SCALE: 1/8" = 1'-0"



REAR ELEVATION
FRONT ELEVATION



SOUTH ELEVATION
SCALE: 1/8" = 1'-0"



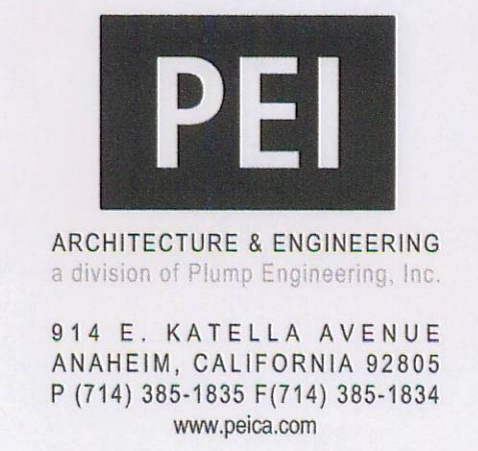
ATTACHED TO ADMINISTRATIVE APPROVAL
DATED: 10-16-2012
TRASH ENCLOSURE PLAN / ELEVATIONS BY: DEBRA D. CAMPBELL
NOT TO SCALE
ALT - 4BR



THIS PLAN IS PROPERTY OF PEI / ARCHITECTURE & ENGINEERING. THIS DRAWING IS LOANED WITHOUT OTHER CONSIDERATION THAN THE AGREEMENT AND CONDITION THAT IT IS NOT BE REPRODUCED, COPIED, OR OTHERWISE DISPOSED OF, DIRECTLY OR INDIRECTLY, AND IS NOT TO BE USED IN WHOLE OR IN PART TO ASSIST IN MAKING OR TO FURNISH ANY INFORMATION FOR THE MAKING OF DRAWINGS, PRINTS, APPARATUS OR PARTS THEREOF. THE ACCEPTANCE OF THIS DRAWING WILL BE CONSTRUED AS AN ACCEPTANCE OF THE FOREGOING CONDITIONS.

CONCEPTUAL ELEVATIONS
2522 SARDIS RD. NORTH
CHARLOTTE, NC 28227

JOB # A120308
Date: 9.12.12



Sheet No.
A.2