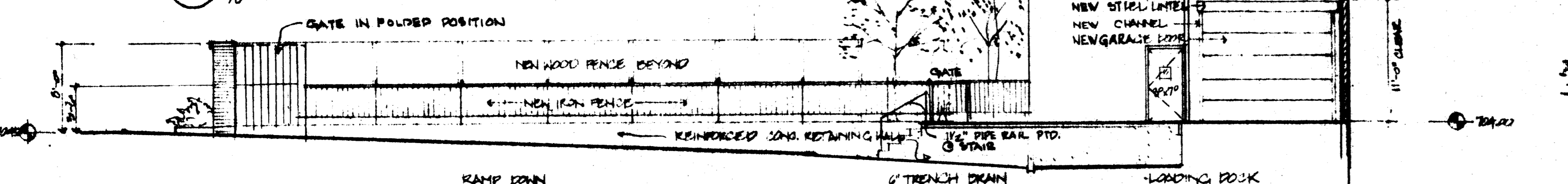
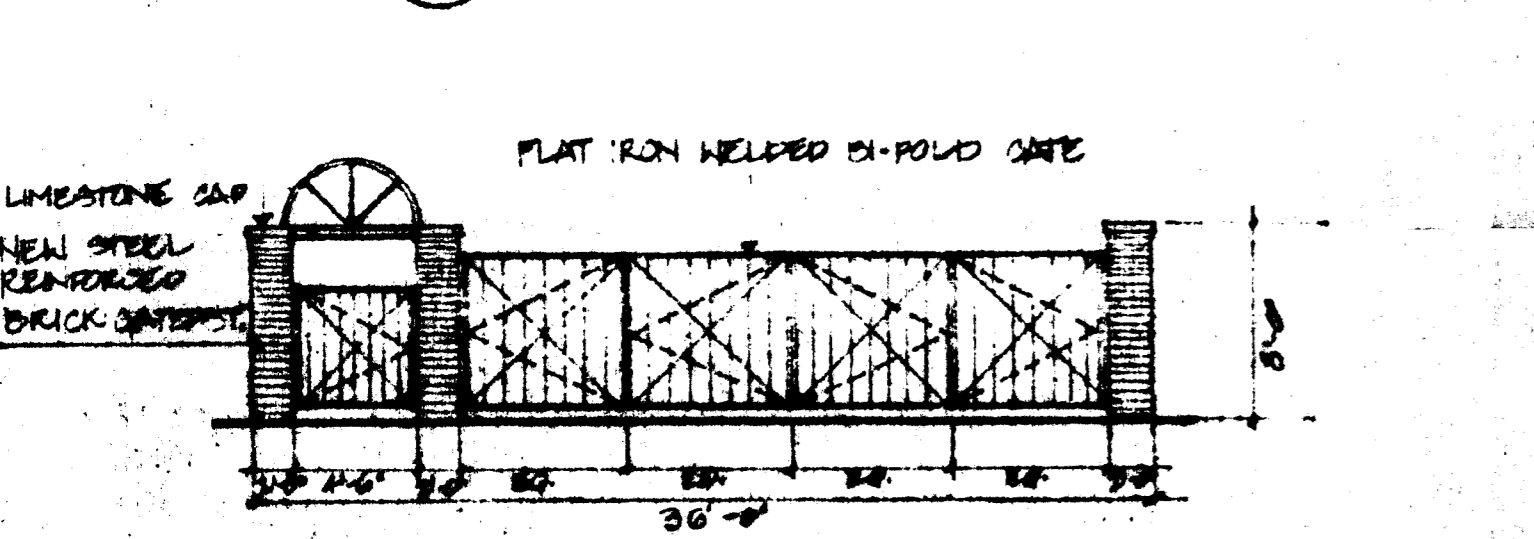


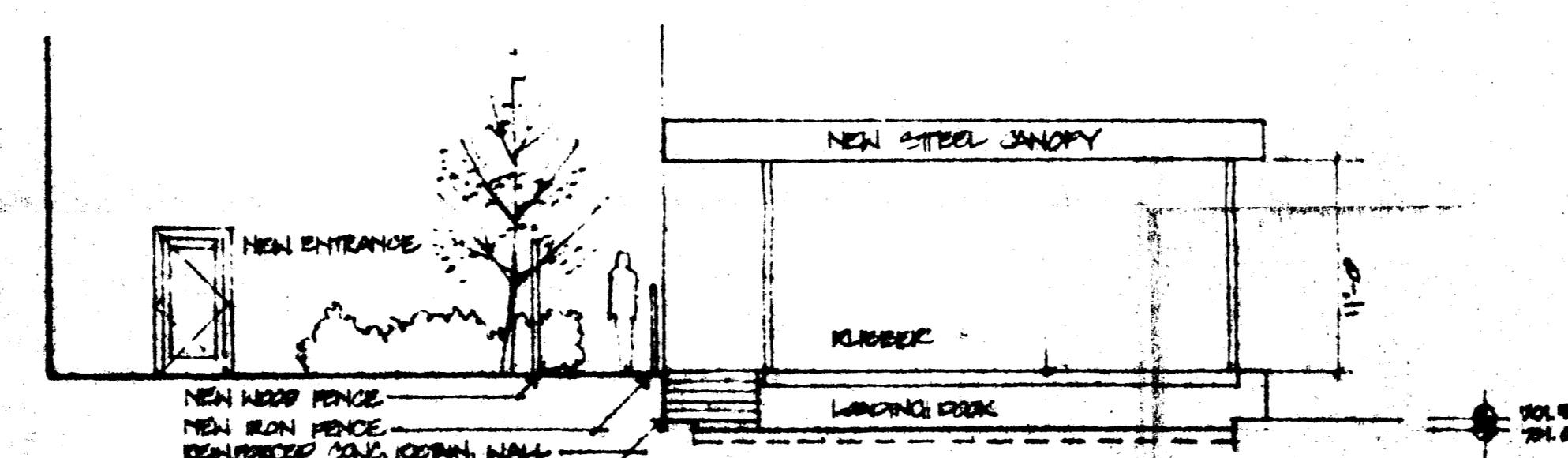
**A PLAN @ LOADING DOCK**  
 1/8" = 1'-0"



**B SECTION A-A**  
 1/8" = 1'-0"



**C ELEVATION @ GATE**  
 1/8" = 1'-0"



**D SECTION B-ELEVATION @ LOAD DOCK**  
 1/8" = 1'-0"

**E TYPICAL SECTION @ LOADING DOCK & CANOPY**  
 1/4" = 1'-0"

Energy Capital Group  
 Washington, D.C. and  
 Charlotte, NC

# KIMBRELL'S LOADING DOCK

SCALE: AS NOTED  
 DATE: 08/07/09  
 DRAWN BY: [Name]  
 CHECKED BY: [Name]  
**A1**