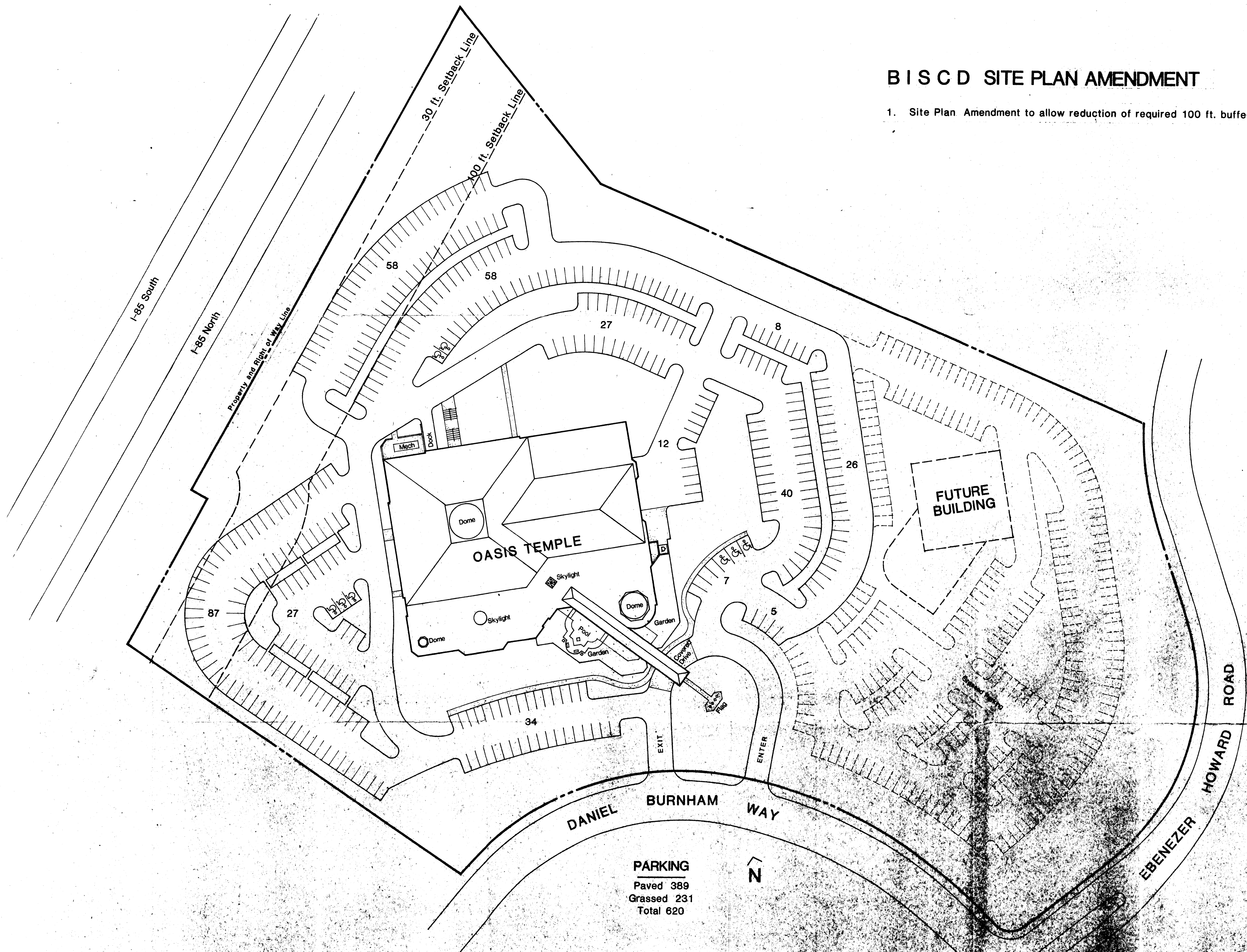


# B I S C D SITE PLAN AMENDMENT

1. Site Plan Amendment to allow reduction of required 100 ft. buffer to 30 ft. buffer along I-85.



**PARKING**  
 Paved 389  
 Grassed 231  
 Total 620

APPROVE BY COUNTY COMMISSION

DATE 12-1-86

86-044(C)

CORPORATE SEAL

NO.	DATE	REVISIONS
1	7-25-1986	
2		
3		
4		
5		
6		
7		
8		
9		
10		

**LITTLE & ASSOCIATES**

ARCHITECTS ENGINEERS PLANNERS  
 8045 WESTPARK DRIVE • CHARLOTTE, NORTH CAROLINA 28205 • (704) 525-4000

**SITE PLAN** 1" = 40'

**OASIS TEMPLE**  
 CHARLOTTE N.C.

NO. 1350  
 SHEET