

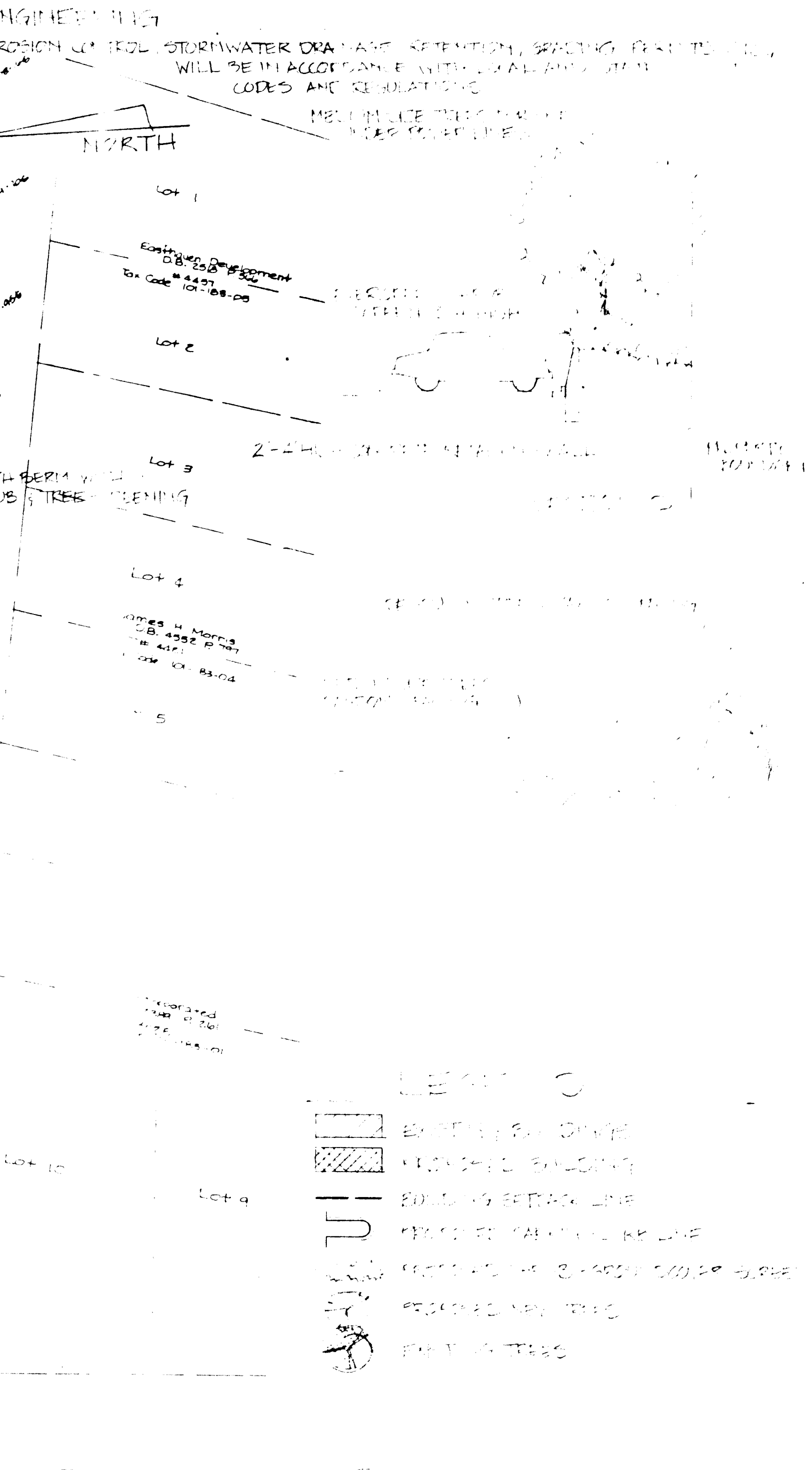
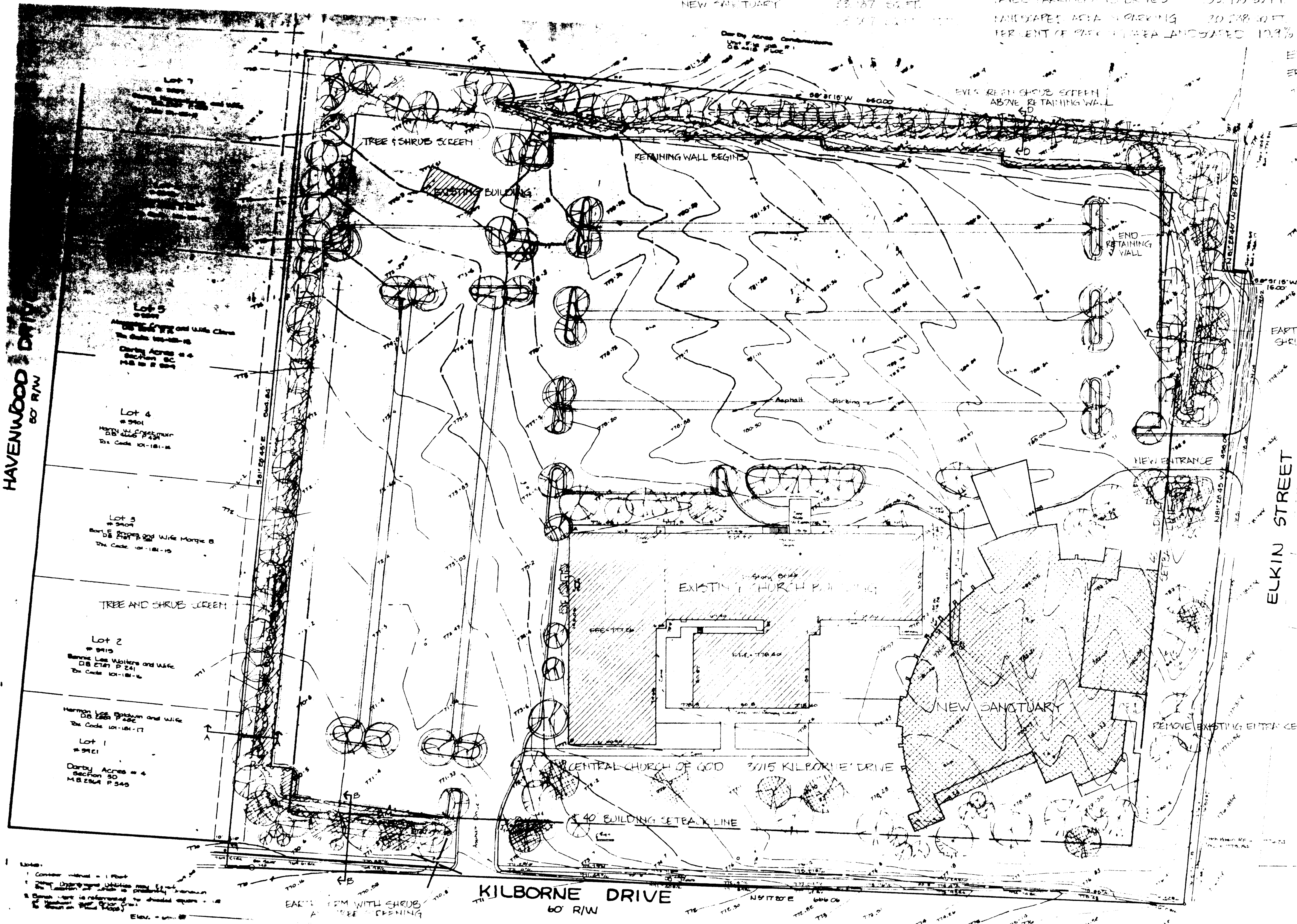
**BUILDING HEIGHT**  
 1ST FLOOR 30 FT  
 2ND FLOOR 30 FT  
 MAX. CHIMNEY WALL 34 FT

**SANCTUARY SEATING CAPACITY**  
 SANCTUARY 272  
 CHURCH 256  
 BAPTIST 310  
 CHOR 15  
 TOTAL 1003

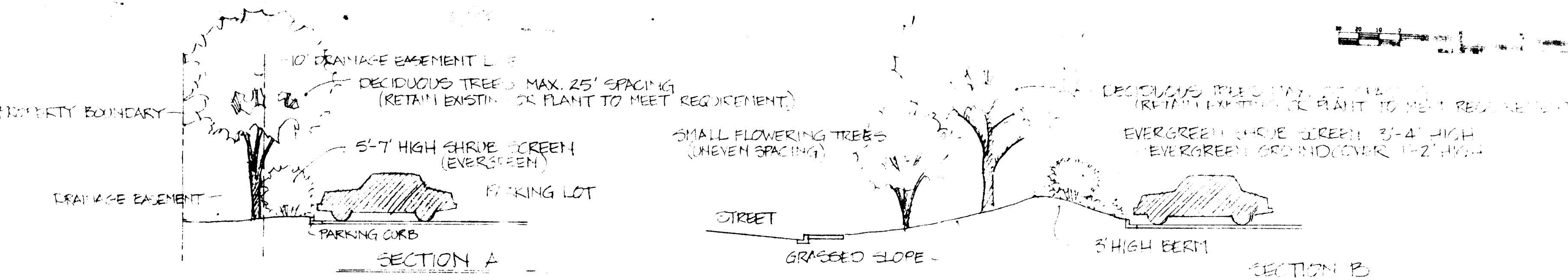
**BUILDINGS**  
 EXISTING  
 CHURCH 256 SQ FT  
 BAPTIST 310 SQ FT  
 CHOR 15 SQ FT  
 PROPOSED  
 NEW SANCTUARY 272 SQ FT

**PARKING**  
 272 AVAILABLE SPACES  
 AREA INSIDE OF RETAINING WALL 100,000 SQ FT  
 STREETS AND DRIVE 100,000 SQ FT  
 PAVED PARKING AND DRIVE 100,000 SQ FT  
 UNPAVED AREA 20,000 SQ FT  
 PERCENT OF PAVED AREA ANTICIPATED 100%

**ENGINEERING**  
 DESIGN LIMITED. STORMWATER DRAINAGE SYSTEMS, SWELLS, GRADES, ETC. WILL BE IN ACCORDANCE WITH KANSAS STATE ENGINEERING BOARD RULES AND REGULATIONS. INCLUDE THE DESIGN OF NEARBY STREETS.



**MASTER SITE PLAN**



THE LONG PLANTING STRIPS IN PARKING LOT BETWEEN AREAS WITH TREES WILL BE PLANTED WITH LOW EVERGREEN GROUND-COVER EXCEPT IN AREAS WHEN PATHS FOR WALKING ARE NECESSARY.

*Recommended for approval by City Council 3/19/87*

APPROVED BY CITY COUNCIL  
 DATE 4-22-87

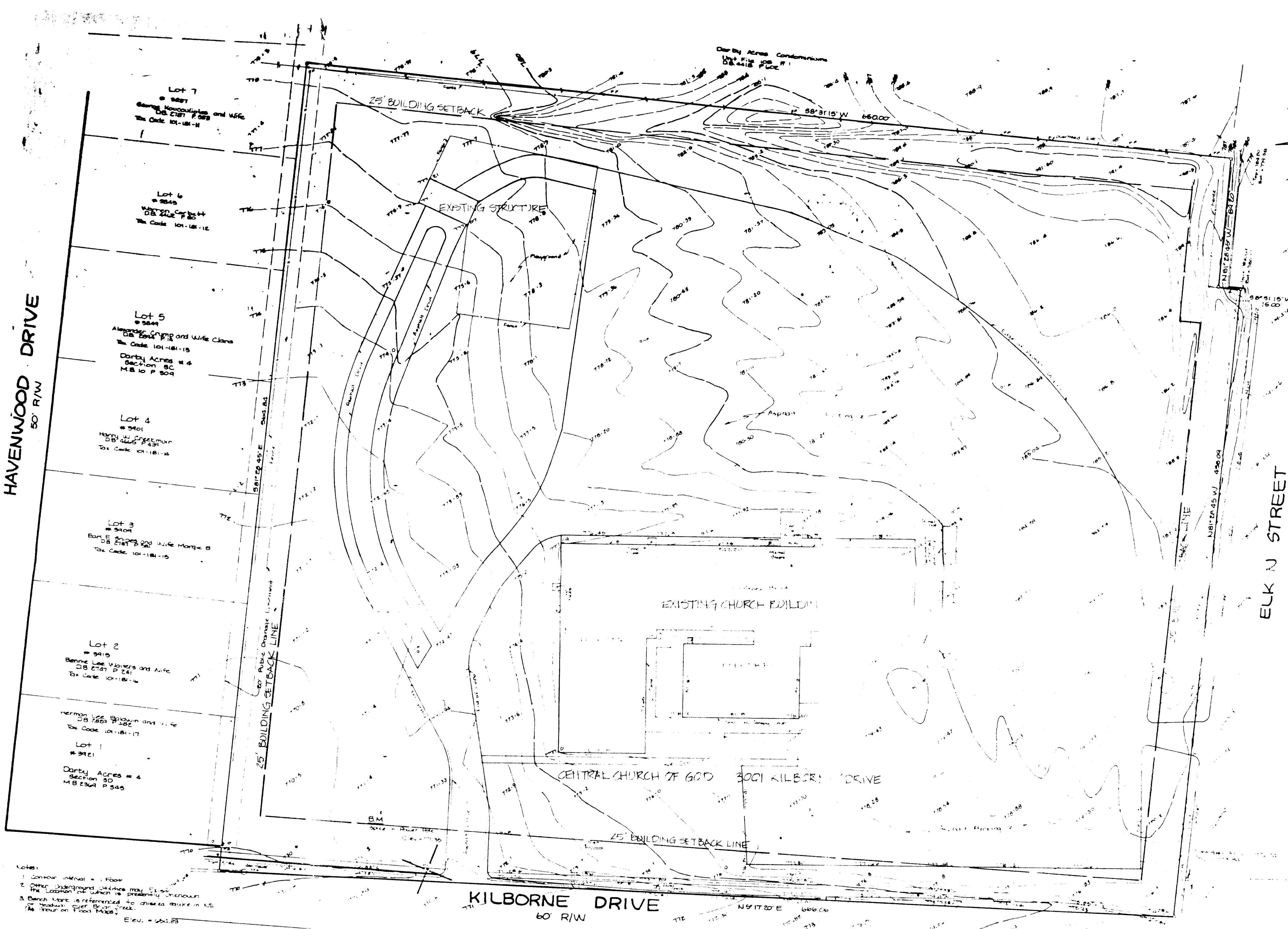
**CENTRAL CHURCH OF GOD**  
 CHARLOTTE, NORTH CAROLINA

Commercial Builders Of Kansas, Inc.  
 450 N. 159th E. Wichita, Ks. 67230

JOB NO. 1001  
 DATE 3/19/87

REVISOR  
 DATE 3/19/87

SHEET 2 OF 2



**ENGINEERING AS SHOWN**

**CENTRAL CHURCH OF GOD**  
 CHARLOTTE, NORTH CAROLINA

Commercial Builders Of Kansas, Inc.  
 450 N. 159th E. Wichita, Ks. 67230

JOB NO. 1001  
 DATE 3/19/87

REVISOR  
 DATE 3/19/87

SHEET 1 OF 2