

T. E. HENRY, JR., ET AL.
 ARCHITECTS
 605 W. SOUTH ST., SUITE 400
 WILSON, N.C. 27157
 PHONE: 783-5888

SITE PLAN DATA:

RESIDENTIAL APARTMENTS	Phase I	Future	Total
Studios	15	9	24
Two-bedroom Apartments	35	29	64
B CLUSTER HOMES	10	34	44
C CLUSTER HOMES	30	0	30
TOTAL	155	85	240

240 ± 40 acres = 6 units/acre
 * LITE - Maximum Density Number of Units/Acre = 600

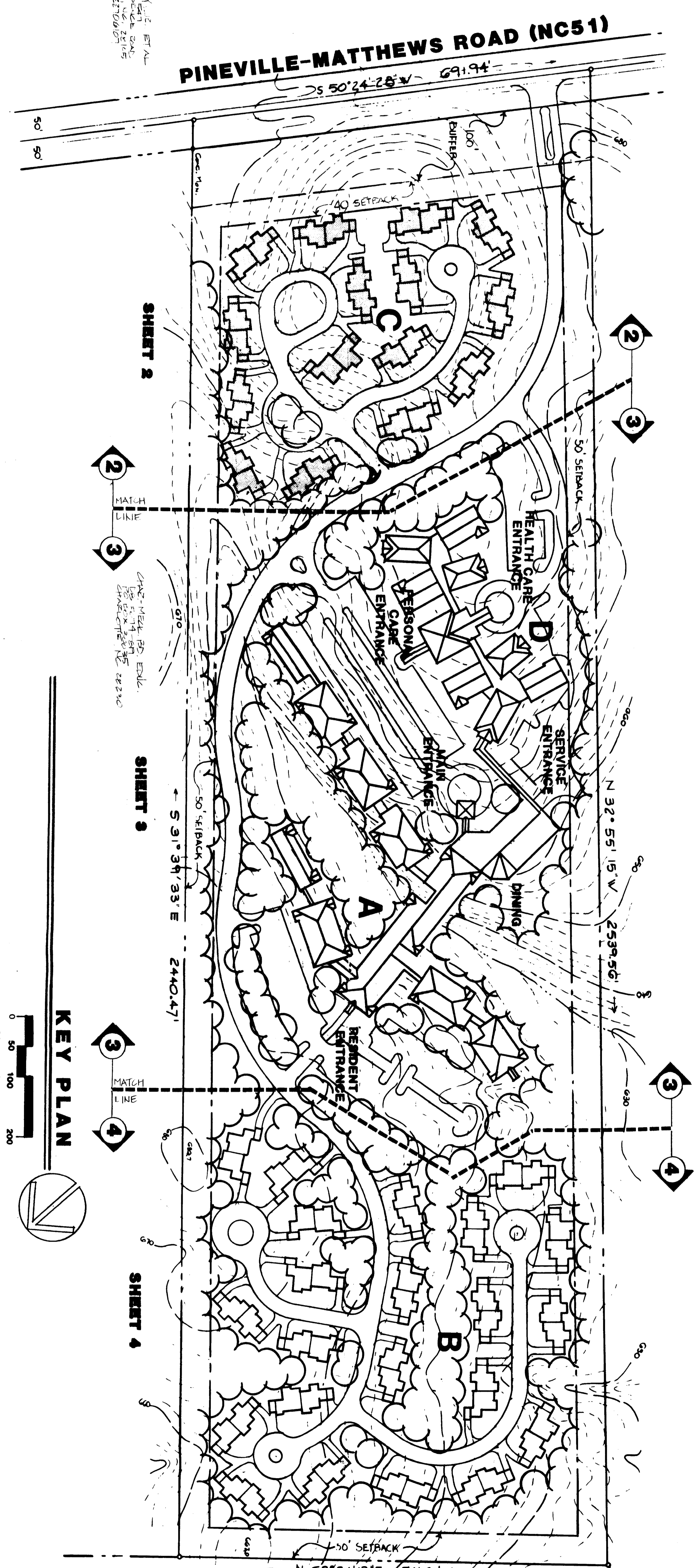
D HEALTH CARE CENTER

PHASE	Phase I	Future	Total
Nursing Beds	20	0	20
Residential Care Beds	44	0	44
Total	134	0	134

CHURCH ZONING
 PROPOSED ZONING : R-15
 TOTAL ACRES : 40.003 ACRES
 NON-RESIDENTIAL : RETIREMENT COMMUNITY
 UNDEVELOPED OPEN SPACE : 422 SPACES - PROVIDED
 TOTAL PARKING SPACES : 144 SPACES

GENERAL NOTES:
 1 - All exterior lighting shall be shielded from adjacent property.
 2 - All buffers and screens shall be installed in Phase I and shall comply with Wakeletburg County Buffering and Screening Ordinance 160.23, 160.24 and 160.25.
 3 - Boundary survey prepared by Spratt-Seaver, Inc., Charlotte, N.C. dated 10/15/87.
 4 - Topographic data from City of Charlotte Aerial Topography Map and is shown at 2' contour intervals.
 5 - All roads shall be private asphalt drives. Main drives shall be 40' wide. All out-drops shall be min. radius of 40'.
 6 - Handicapped parking spaces shall meet and exceed state standards.
 7 - The driveway connection to Pineville-Matthews Road shall meet N.C.D.O.T. standards.
 8 - The driveway connection to Pineville-Matthews Road shall meet N.C.D.O.T. standards.
 9 - The driveway connection to Pineville-Matthews Road shall meet N.C.D.O.T. standards.
 10 - The driveway connection to Pineville-Matthews Road shall meet N.C.D.O.T. standards.
 11 - The driveway connection to Pineville-Matthews Road shall meet N.C.D.O.T. standards.

GENERAL NOTES:

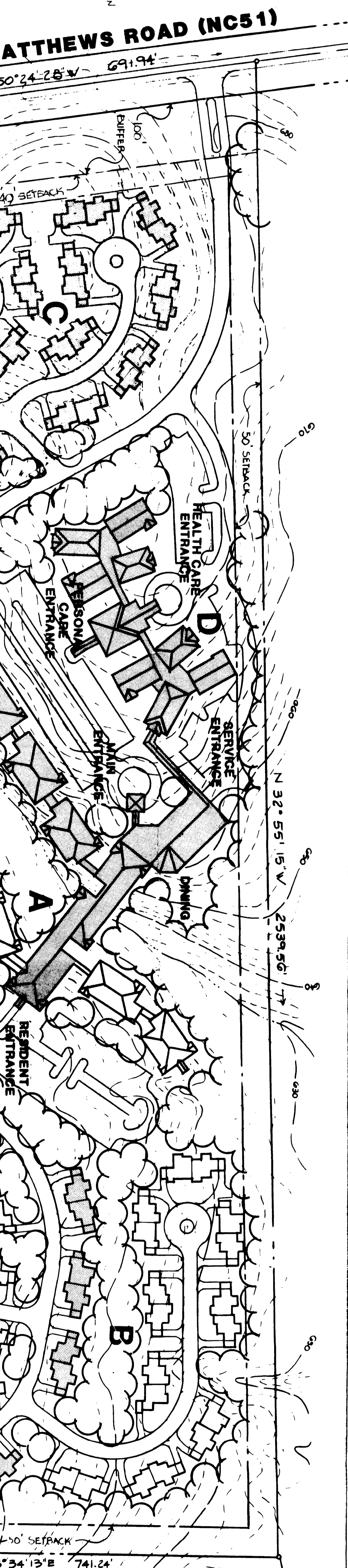


PHASING PLAN
 SCALE 1" = 100'

KEY PLAN
 SCALE 1" = 100'

REVISIONS:
 7-1-87 ADDED UNITS ON SHEET 2 TO WEST TO ACCOMMODATE NEW ADDITIONAL 40 SETBACK LINE
 7-1-87 ADDED UNITS ON SHEET 2 TO WEST TO ACCOMMODATE NEW ADDITIONAL 40 SETBACK LINE
 7-1-87 ADDED UNITS ON SHEET 2 TO WEST TO ACCOMMODATE NEW ADDITIONAL 40 SETBACK LINE

- 1 - All exterior lighting shall be shielded from adjacent property.
- 2 - All buffers and screens shall be installed in Phase I and shall comply with Wakeletburg County Buffering and Screening Ordinance 160.23, 160.24 and 160.25.
- 3 - Boundary survey prepared by Spratt-Seaver, Inc., Charlotte, N.C. dated 10/15/87.
- 4 - Topographic data from City of Charlotte Aerial Topography Map and is shown at 2' contour intervals.
- 5 - All roads shall be private asphalt drives. Main drives shall be 40' wide. All out-drops shall be min. radius of 40'.
- 6 - Handicapped parking spaces shall meet and exceed state standards.
- 7 - The driveway connection to Pineville-Matthews Road shall meet N.C.D.O.T. standards.
- 8 - The driveway connection to Pineville-Matthews Road shall meet N.C.D.O.T. standards.
- 9 - The driveway connection to Pineville-Matthews Road shall meet N.C.D.O.T. standards.
- 10 - The driveway connection to Pineville-Matthews Road shall meet N.C.D.O.T. standards.
- 11 - The driveway connection to Pineville-Matthews Road shall meet N.C.D.O.T. standards.

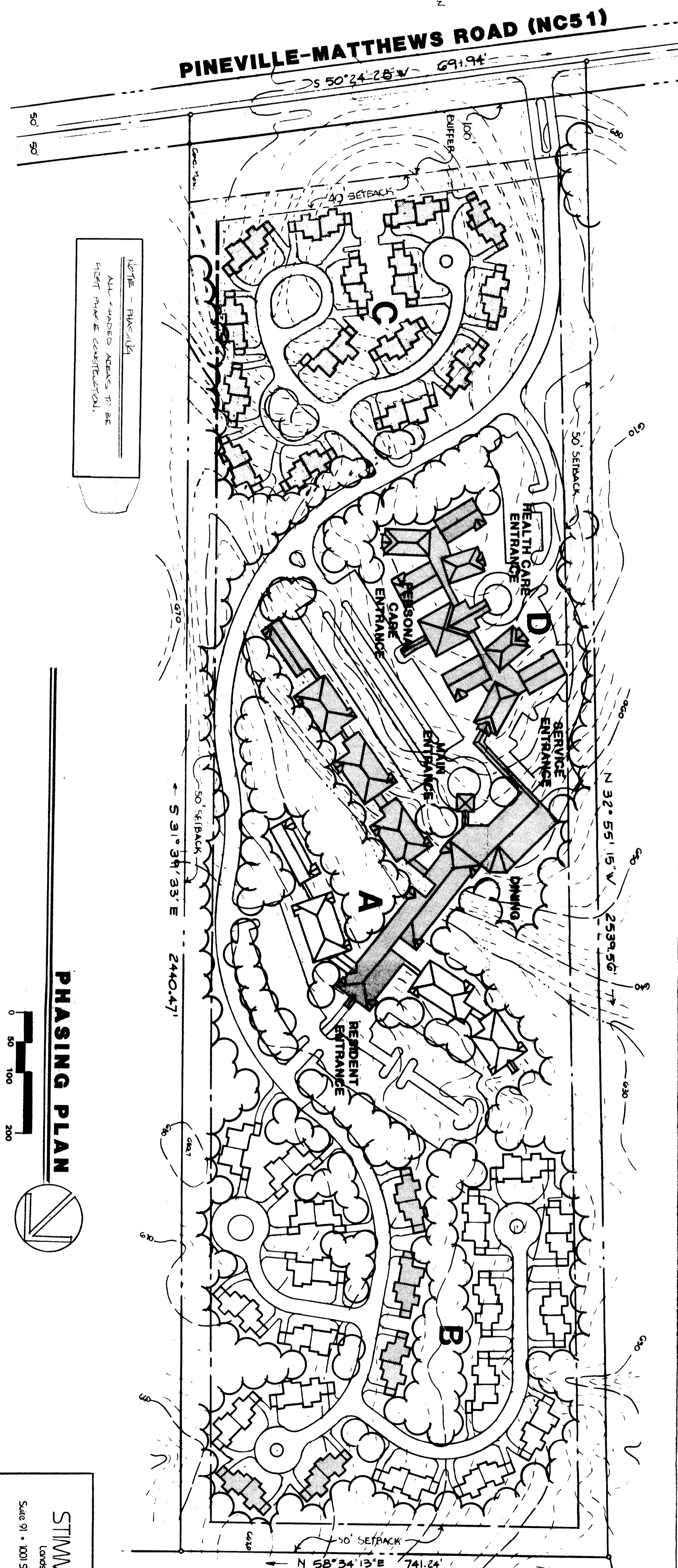


PHASING PLAN
 SCALE 1" = 100'

KEY PLAN
 SCALE 1" = 100'

REVISIONS:
 7-1-87 ADDED UNITS ON SHEET 2 TO WEST TO ACCOMMODATE NEW ADDITIONAL 40 SETBACK LINE
 7-1-87 ADDED UNITS ON SHEET 2 TO WEST TO ACCOMMODATE NEW ADDITIONAL 40 SETBACK LINE
 7-1-87 ADDED UNITS ON SHEET 2 TO WEST TO ACCOMMODATE NEW ADDITIONAL 40 SETBACK LINE

- Central services building accessory uses include:
- Lobby/reception offices
 - postal area
 - auditorium
 - cafeteria/shop
 - card/books
 - convenience/office shop
 - dining room
 - game room
 - library
 - chapel
 - banking facility
 - building/grounds maintenance
 - food service dept.
 - purchase/supply
 - support staff areas
 - street department/2
- Health Care Center accessory uses include:
- lobby/reception/waitroom
 - healthcare administration
 - physical therapy
 - laundry
 - resident storage



PHASING PLAN
 SCALE 1" = 100'

KEY PLAN
 SCALE 1" = 100'

REVISIONS:
 7-1-87 ADDED UNITS ON SHEET 2 TO WEST TO ACCOMMODATE NEW ADDITIONAL 40 SETBACK LINE
 7-1-87 ADDED UNITS ON SHEET 2 TO WEST TO ACCOMMODATE NEW ADDITIONAL 40 SETBACK LINE
 7-1-87 ADDED UNITS ON SHEET 2 TO WEST TO ACCOMMODATE NEW ADDITIONAL 40 SETBACK LINE

Calloway Johnson Moore P.A. Architecture
 919/724-1503
 City Center West
 605 W. Fourth St.
 Winston-Salem,
 N.C. 27102

STIMMEL ASSOCIATES
 Landscape Architects - Landscapers
 Suite 91 • 1001 South Maxwell St. • Winston-Salem, N.C. 27101
 (919) 783-5888

BAPTIST RETIREMENT HOMES OF NORTH CAROLINA, INC.
 CHARLOTTE, N.C.

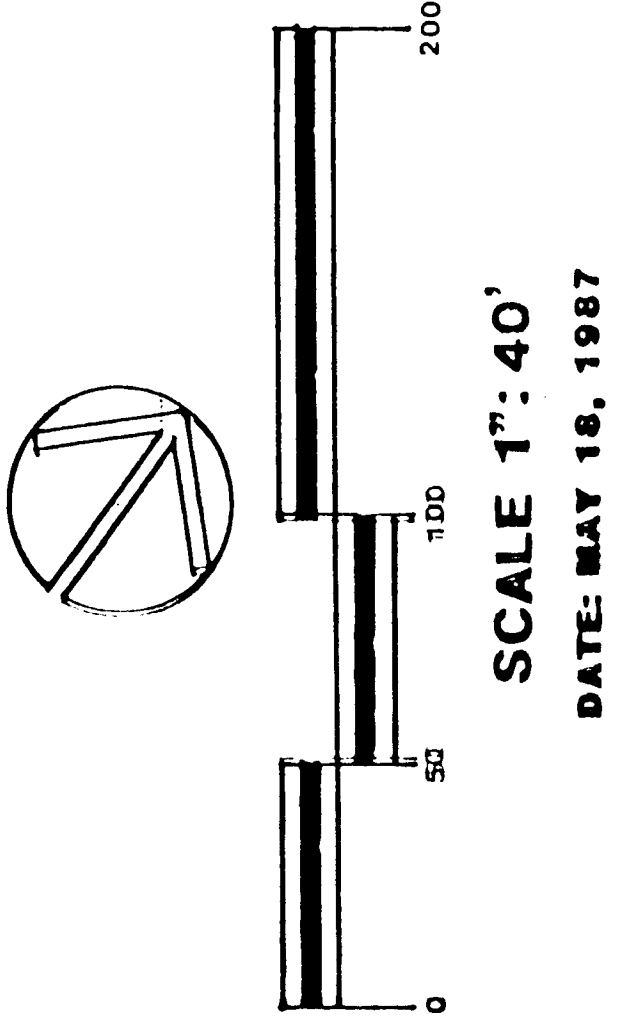
DATE: 8-12-87
 APPROVED BY COUNTY COMMISSIONER
 DITE: 8-17-87

NO. 4

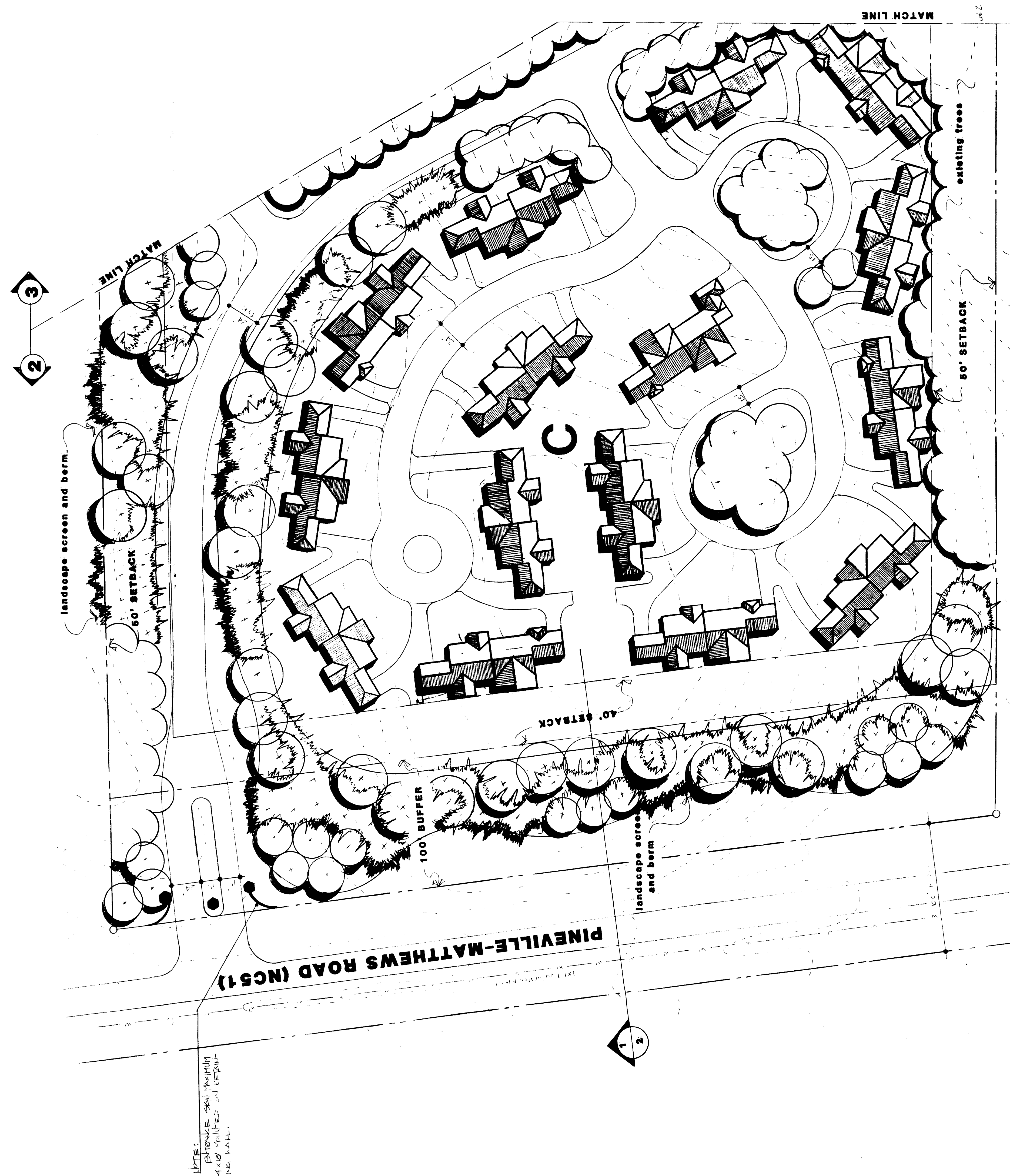
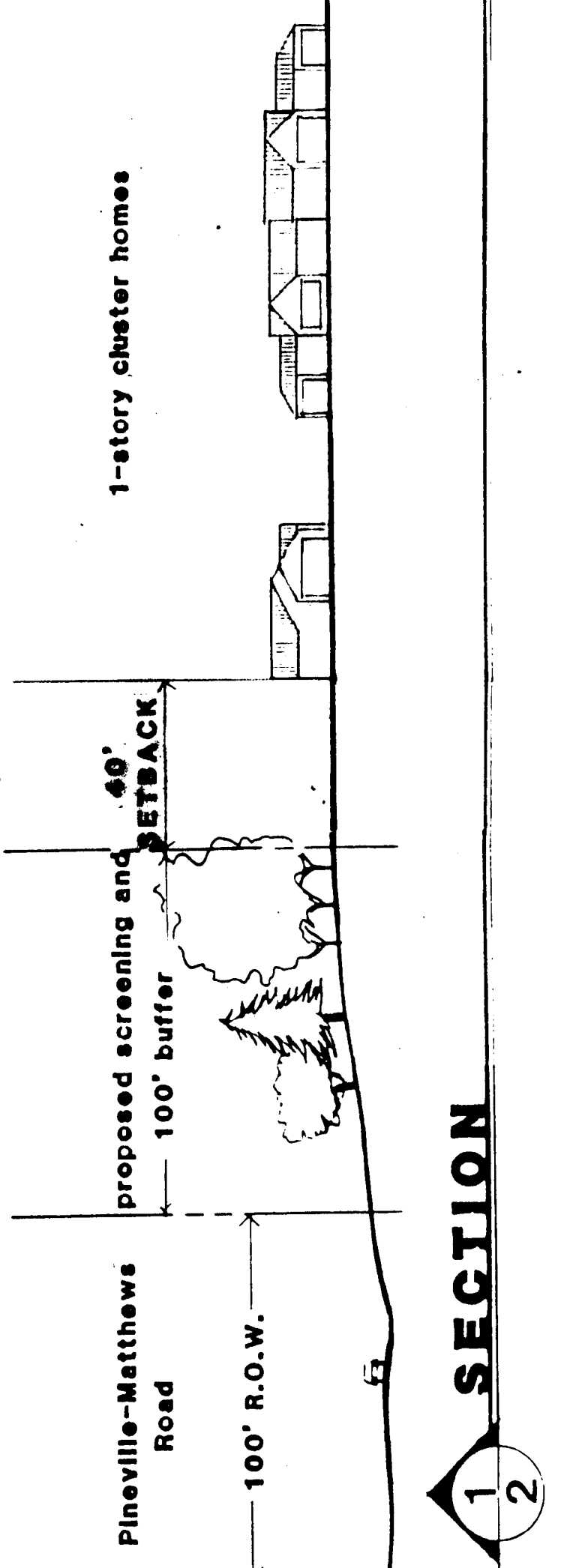
PLANT LEGEND

- EXISTING TREES TO REMAIN
 - PROPOSED LARGE DECIDUOUS TREES (AS EXAMPLES ONLY)
 1) Willow Oak 1 1/2"-2" caliper
 2) Sugar Maple 10-12' height
 3) Sycamore
 - PROPOSED EVERGREEN TREES (AS EXAMPLES ONLY)
 1) White Pine 6-8' height
 2) Canadian Hemlock
 3) Magnolia
 - ORNAMENTAL TREES (AS EXAMPLES ONLY)
 1) Dogwood 1-1 1/2" caliper
 2) Bradford Pear
 3) Kwanzan Cherry
- minimum installed size

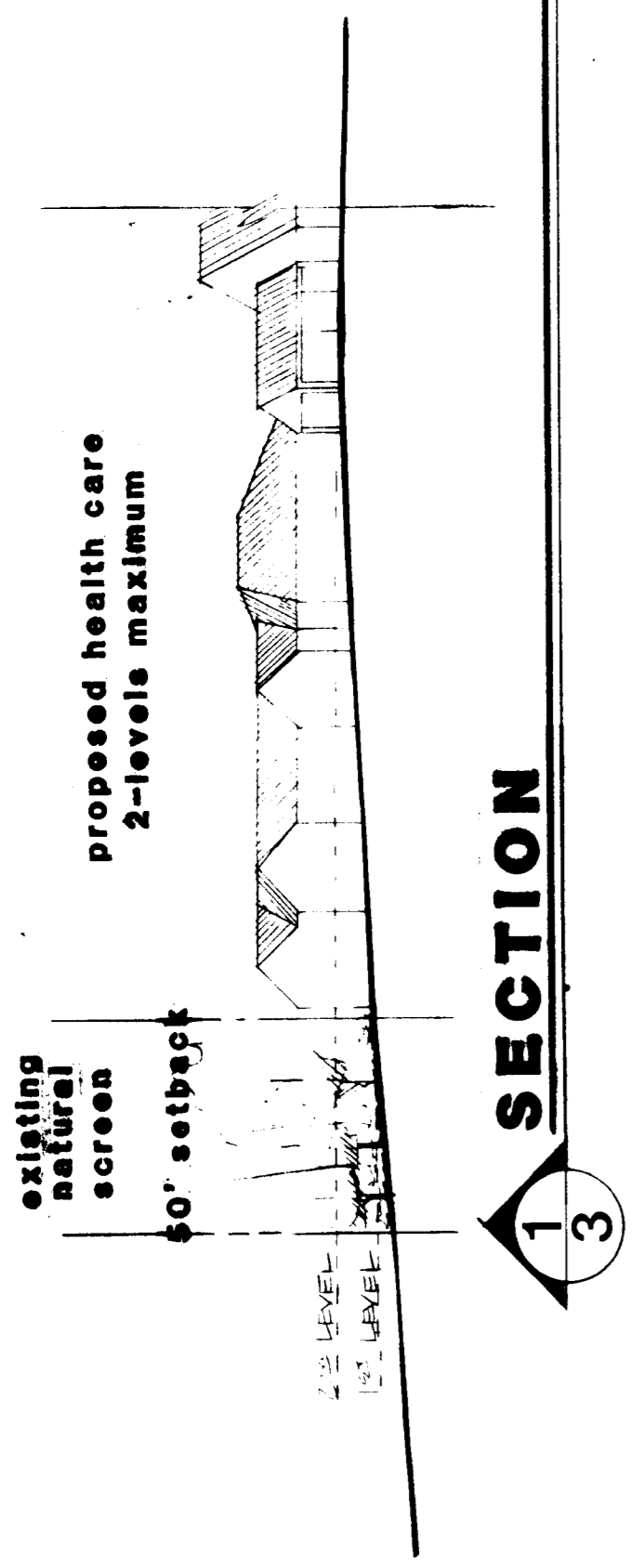
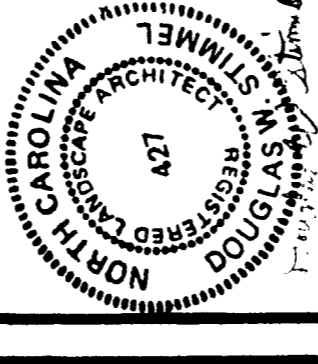
SITE PLAN AREA "C"



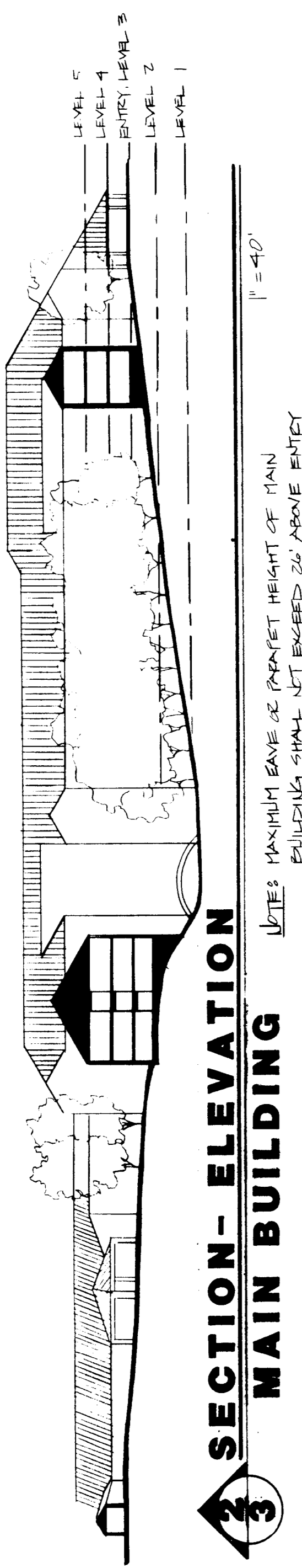
STIMMEL ASSOCIATES
Landscape Architects - Land Planners
Suite 91 • 100 South Main Street • Winston-Salem, NC 27101
(703) 722-5686



NOTE: ENTRANCE SHALL MAINTAIN 4'-0" MINIMUM SETBACK FROM ROAD.



SECTION 1

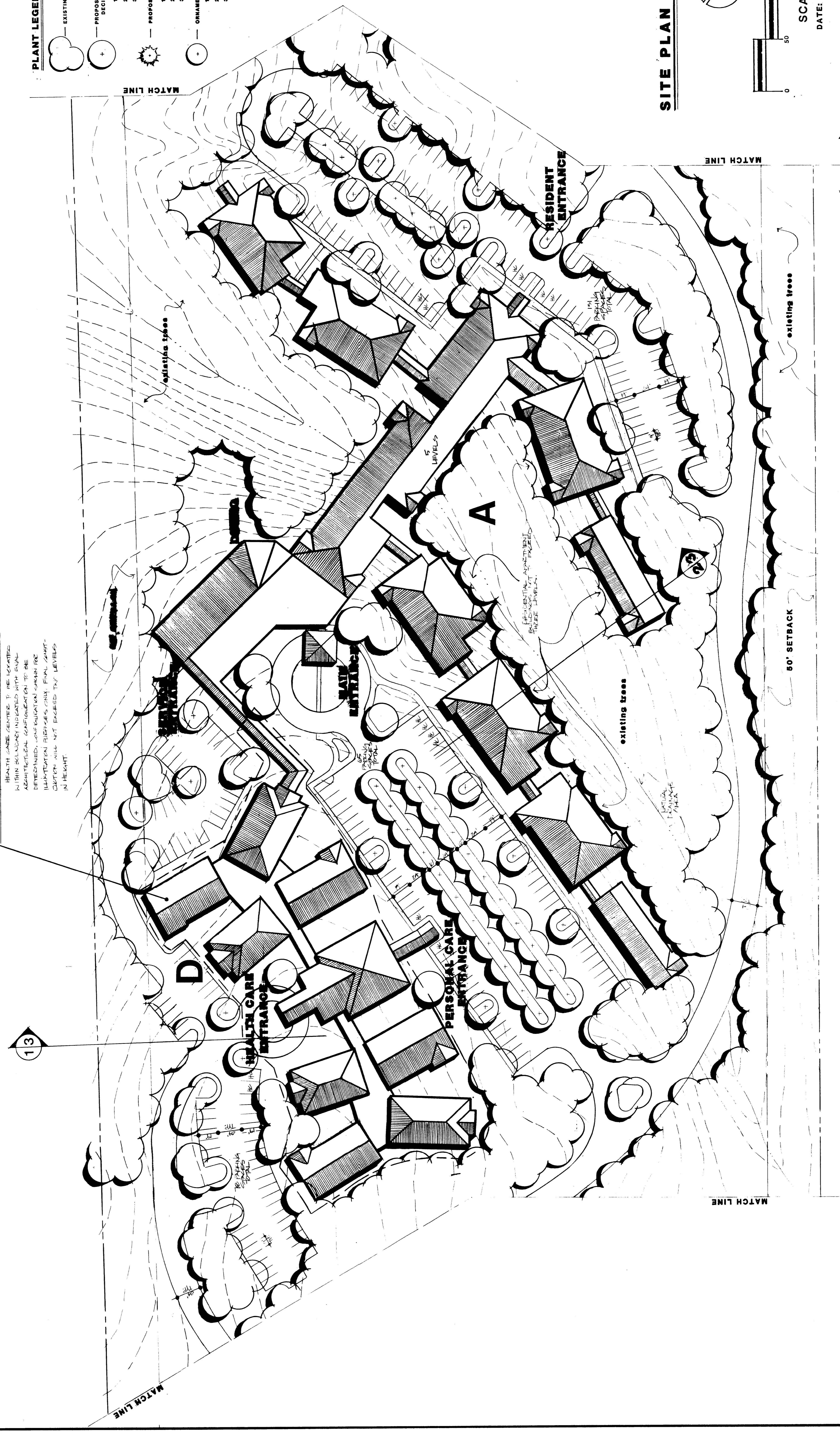


SECTION 3

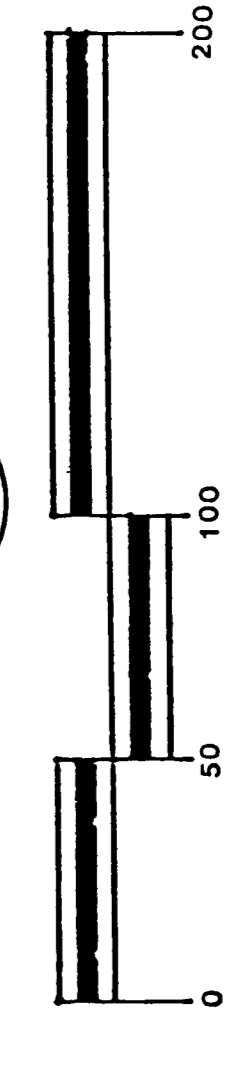
NOTE:
HEALTH CARE CENTER IS LOCATED WITHIN SETBACK INDICATED WITH SHAD-ARCHITECTURAL CONFIGURATION TO BE DETERMINED. CONFIGURATION CAN BE ILLUSTRATION PURPOSES ONLY. FINAL CONFIGURATION WILL NOT EXCEED 2 1/2 LEVELS IN HEIGHT.

PLANT LEGEND

	EXISTING TREES TO REMAIN	minimum installed size
	PROPOSED LARGE DECIDUOUS TREES (no height limit)	
	1) Willow Oak	11/2"-2" caliper
	2) Sugar Maple	10-12" height
	3) Sycamore	
	PROPOSED EVERGREEN TREES (no height limit)	
	1) White Pine	6-8" height
	2) Canadian Hemlock	
	3) Magnolia	
	ORNAMENTAL TREES (no height limit)	
	1) Dogwood	1-1 1/2" caliper
	2) Bradford Pear	
	3) Kousen Cherry	



SITE PLAN AREAS "A & D"



SCALE 1" = 40'
DATE: MAY 18, 1987

