



\* 0 0 B R E A K 0 0 \*



**ADVANCED  
IMAGING  
SYSTEMS**

www.aisimc.com

An Information  
Management Company

# City of Charlotte – Planning Dept. Scanning Rezoning Files

Petition # \_\_\_\_\_

## Document type:

- Applications
- Correspondence
- Department Comments
- Land Use Consistency
  - Mail Info
  - Mapping
  - Other
- Site Plans



\* 0 0 B R E A K 0 0 \*

PETITIONER Dorothy G. Carter

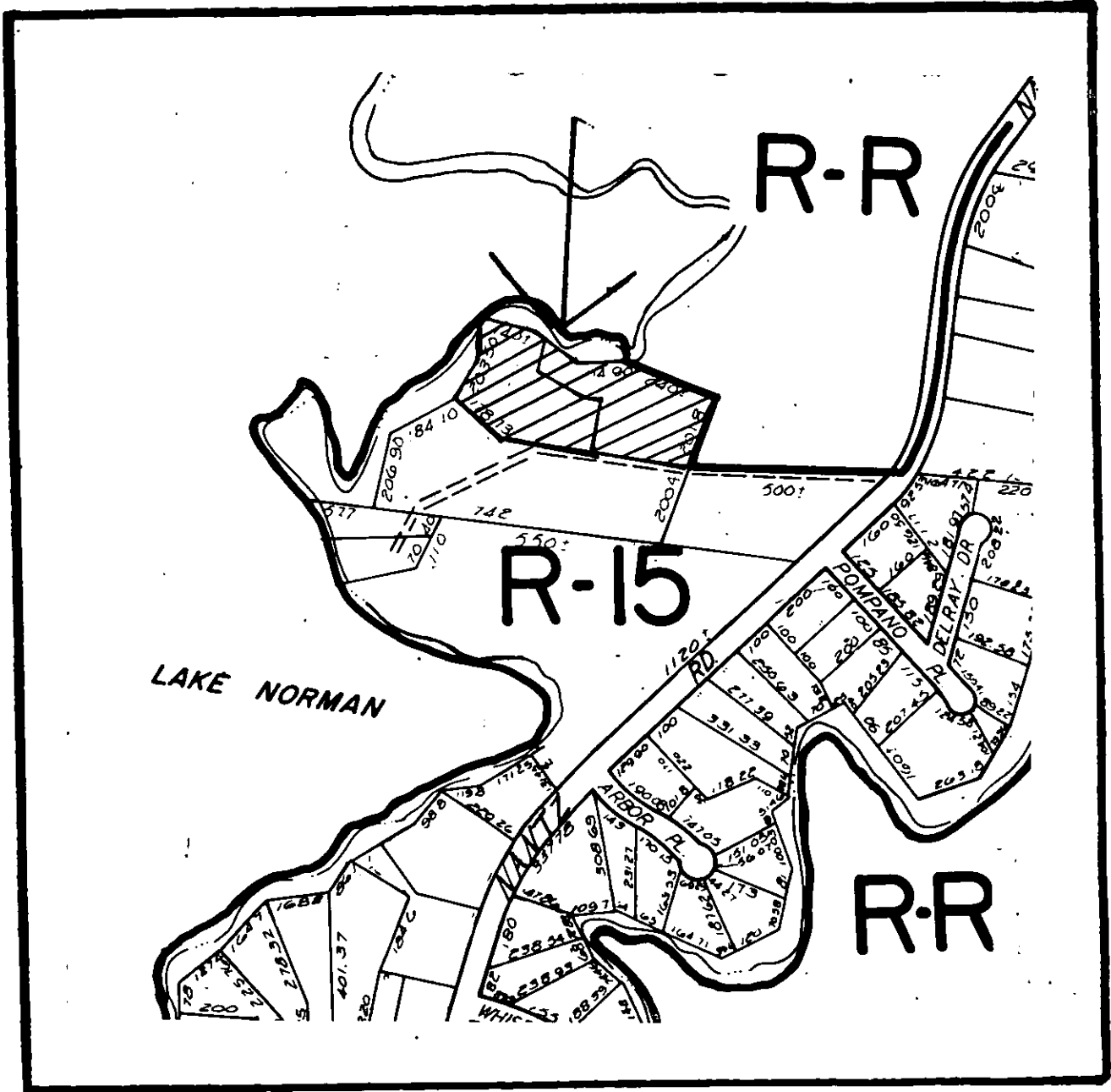
PETITION NO. 88-47(c)

HEARING DATE September 12, 1988

ZONING CLASSIFICATION, EXISTING R-15

REQUESTED RR(CD)

LOCATION Approximately 3.4 acres located on Lake Norman off of Nantz Road in the vicinity of Pompano Place.



ZONING MAP NO. 12

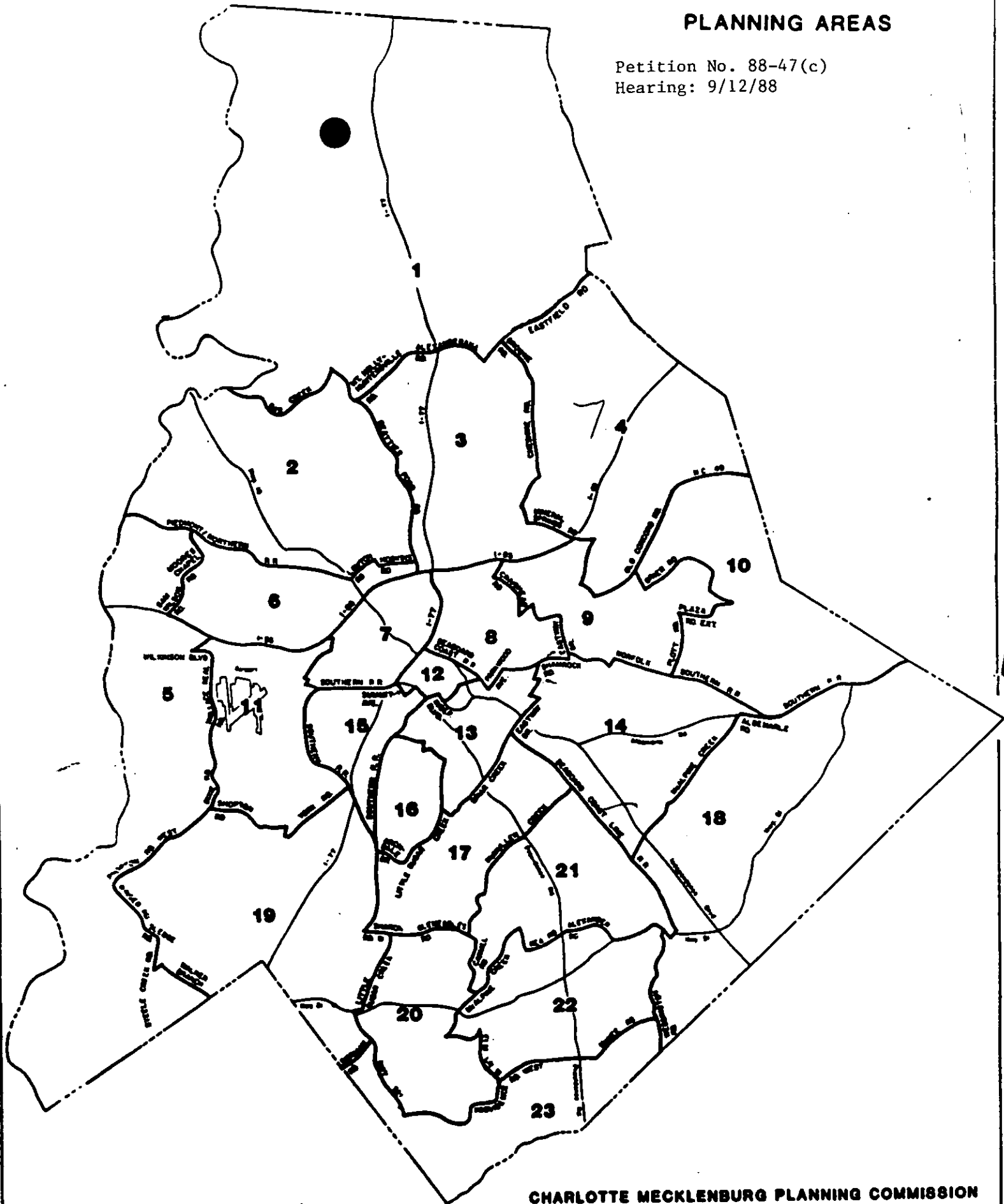
SCALE 1" = 400'

PROPERTY PROPOSED FOR CHANGE



# PLANNING AREAS

Petition No. 88-47(c)  
Hearing: 9/12/88



CHARLOTTE MECKLENBURG PLANNING COMMISSION

April 1988