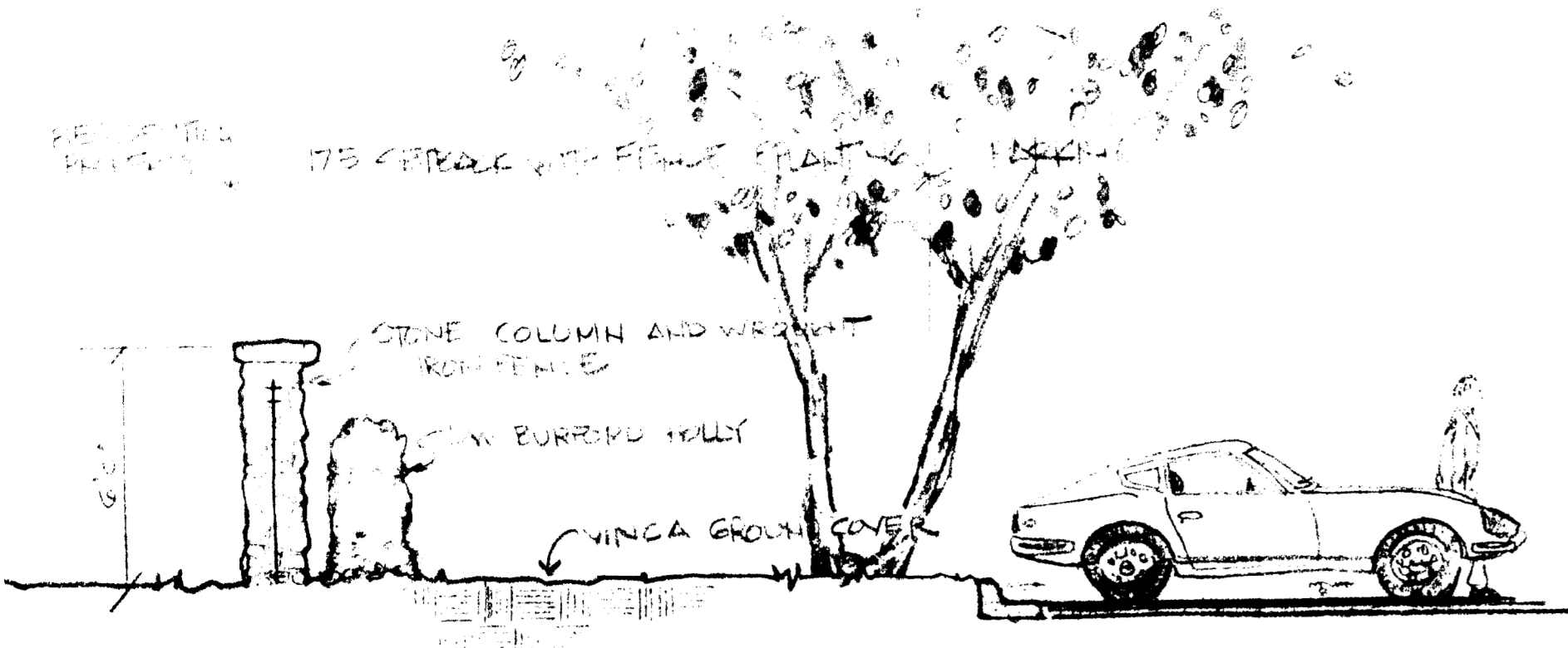


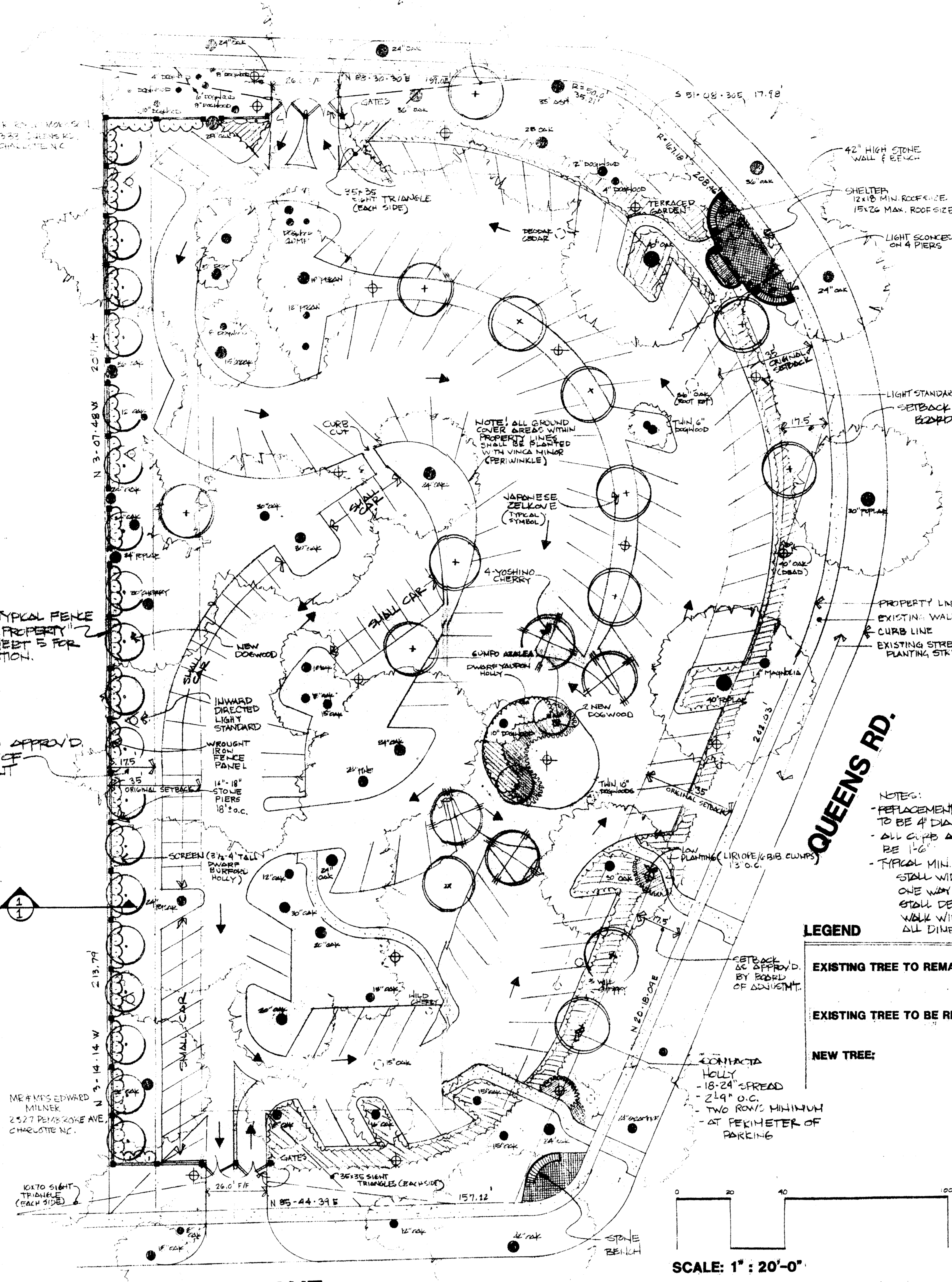
HOPEDALE AVE.



SECTION AT ADJACENT REAR PROPERTY  
1/4" = 1'-0"

NOTE: SEE TYPICAL FENCE AT ADJACENT PROPERTY DETAIL ON SHEET 5 FOR FENCE ELEVATION.

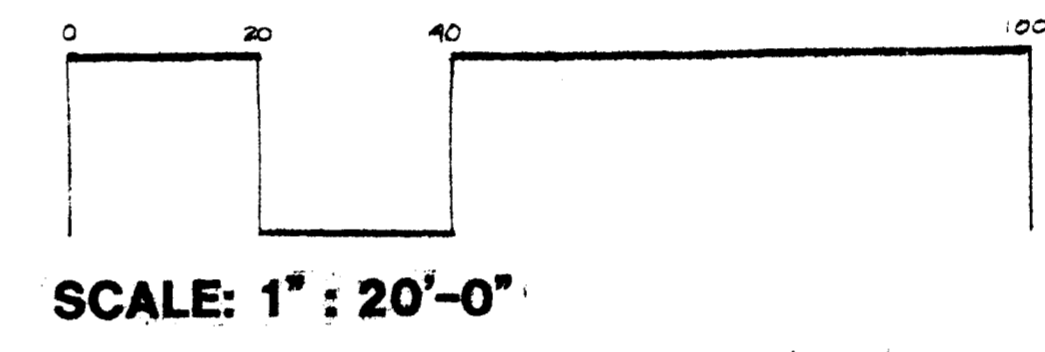
SETBACK OF APPROV. BY BOARD OF ADJUSTMENT



NOTES:  
- REPLACEMENT SIZE TREES TO BE AT DIA-BREAST HEIGHT  
- ALL CURBS AND GUTTERS TO BE 16" CURE CITY DETAIL (O.I.T.)  
- TYPICAL MIN. DIMENSIONS:  
 - STALL WIDTH: 8'-5"  
 - ONE WAY LANE WIDTH: 16'-0"  
 - STALL DEPTH: 18'-0"  
 - WALK WIDTH: 4'-0"  
 - ALL DIMENSIONS TO FACE OF CURB

LEGEND

- EXISTING TREE TO REMAIN
- EXISTING TREE TO BE REMOVED
- NEW TREE:  
 - ROUNDLE HOLLY (18'-24" SPREAD)  
 - 2 1/4" O.C. MINIMUM SPACING AT PERIMETER OF PARKING



SCALE: 1" = 20'-0"  
156 PARKING SPACES

**SITE DATA**  
THE BOARD OF ADJUSTMENT GRANTED A VARIANCE FOR WORKING WITHIN REQUIRED YARDS AS SHOWN ON THIS PLAN AND THE CONSTRUCTION OF A SHELTER WITHIN THE CURB-ROD YARD ON MAY 21, 1988.  
A MINIMUM OF 10% LITER OR LANDSCAPING WILL BE PLACED ON THE SITE (21% LANDSCAPED)  
A MAXIMUM OF 75% OF THE LOT AREA SHALL BE USED FOR PARKING (54% ACTUALLY USED)

**SITE NOTES**  
EXISTING ZONING: R-1B  
PROPOSED ZONING: RESIDENTIAL - INSTITUTIONAL  
SITE SIZE: 2.2179 ACRES  
PROPOSED USE: CHURCH PARKING  
MAXIMUM NUMBER OF SPACES: 156

**GENERAL NOTES**  
THE PARKING ARRANGEMENT SHALL BE DEVELOPED AS SHOWN WITH CAREFUL ATTENTION TO PRESERVATION OF EXISTING TREES. MINOR ADJUSTMENTS MAY BE MADE TO REFLECT SITE CONDITIONS OR TO FURTHER PRESERVE NATURAL VEGETATION.  
STEAM WATER RETENTION SHALL BE PROVIDED WITHIN THE PAVED AREAS IN ACCORDANCE WITH ORDINANCE REQUIREMENTS.  
PARKING SHALL BE FOR CHURCH USE ONLY, WITH ACCESS CONTROLLED BY GATES.  
A 5' SIDEWALK PLANTING STRIP ALONG THE PROPERTY FRONTAGE AT QUEENSBURG ROAD WILL BE DEVELOPED TO ALLOW FOR FUTURE WIDENING OF QUEENSBURG ROAD.

JORDAN DESIGN COLLABORATIVE, P.A.  
LAND PLANNING ARCHITECTURE  
100 WEST 10TH STREET, SUITE 200  
CHICAGO, ILLINOIS 60605  
PHONE: 312.467.1100  
FAX: 312.467.1101

**MYERS PARK UNITED METHODIST CHURCH**  
REZONING PLAN

APPROVED BY CITY COUNCIL  
DATE: 9/19/88

1 OF 5

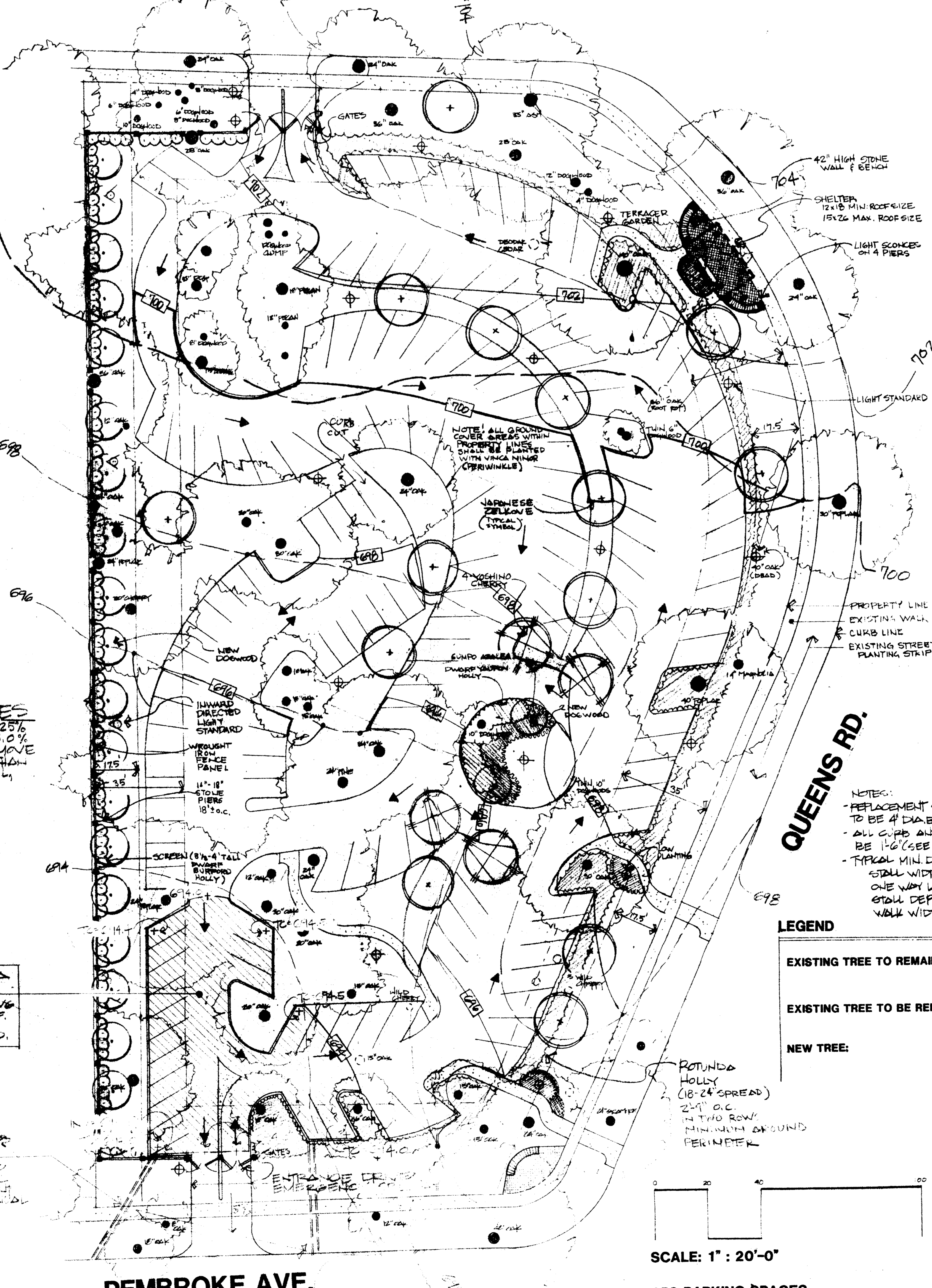
REZONING PLAN  
MYERS PARK UNITED METHODIST CHURCH / PARKING LOT  
JORDAN DESIGN COLLABORATIVE, P.A.

HOPEDALE AVE.

**GRADING NOTES**  
MINIMUM SLOPE: 1.00%  
MAXIMUM SLOPE: 5.00%  
CONCEPT IS TO REMOVE SOIL TO DEPTH OF 10" TO 12" THEN ADD FINISH BASE COURSE.

STORAGE AREA = 2125 SQ. FT.  
- 1500 SQ. FT. X 5' HIGH  
- 625 SQ. FT. X 5' HIGH  
- 1400 G.P. REQ'D.

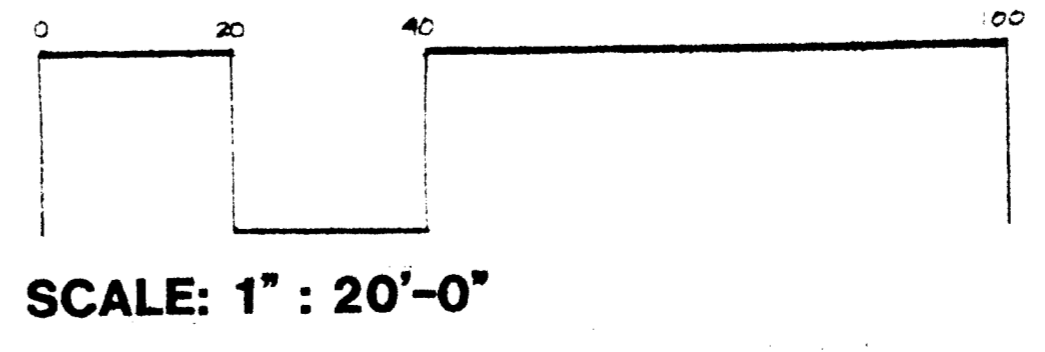
14.4' COUNTER  
- 14.4' X 14.4' X 14.4'  
- 14.4' X 14.4' X 14.4'  
- 14.4' X 14.4' X 14.4'



NOTES:  
- REPLACEMENT SIZE TREES TO BE AT DIA-BREAST HEIGHT  
- ALL CURBS AND GUTTERS TO BE 16" CURE CITY DETAIL (O.I.T.)  
- TYPICAL MIN. DIMENSIONS:  
 - STALL WIDTH: 8'-5"  
 - ONE WAY LANE WIDTH: 16'-0"  
 - STALL DEPTH: 18'-0"  
 - WALK WIDTH: 4'-0"

LEGEND

- EXISTING TREE TO REMAIN
- EXISTING TREE TO BE REMOVED
- NEW TREE:  
 - ROUNDLE HOLLY (18'-24" SPREAD)  
 - 2 1/4" O.C. MINIMUM SPACING AT PERIMETER



SCALE: 1" = 20'-0"  
156 PARKING SPACES

TOTAL ACRES: 2.23 ACRES  
OPEN OR PLANTED SPACE: 1.04 ACRES  
PAVED AREA: 1.19 ACRES

JORDAN DESIGN COLLABORATIVE, P.A.  
LAND PLANNING ARCHITECTURE  
100 WEST 10TH STREET, SUITE 200  
CHICAGO, ILLINOIS 60605  
PHONE: 312.467.1100  
FAX: 312.467.1101

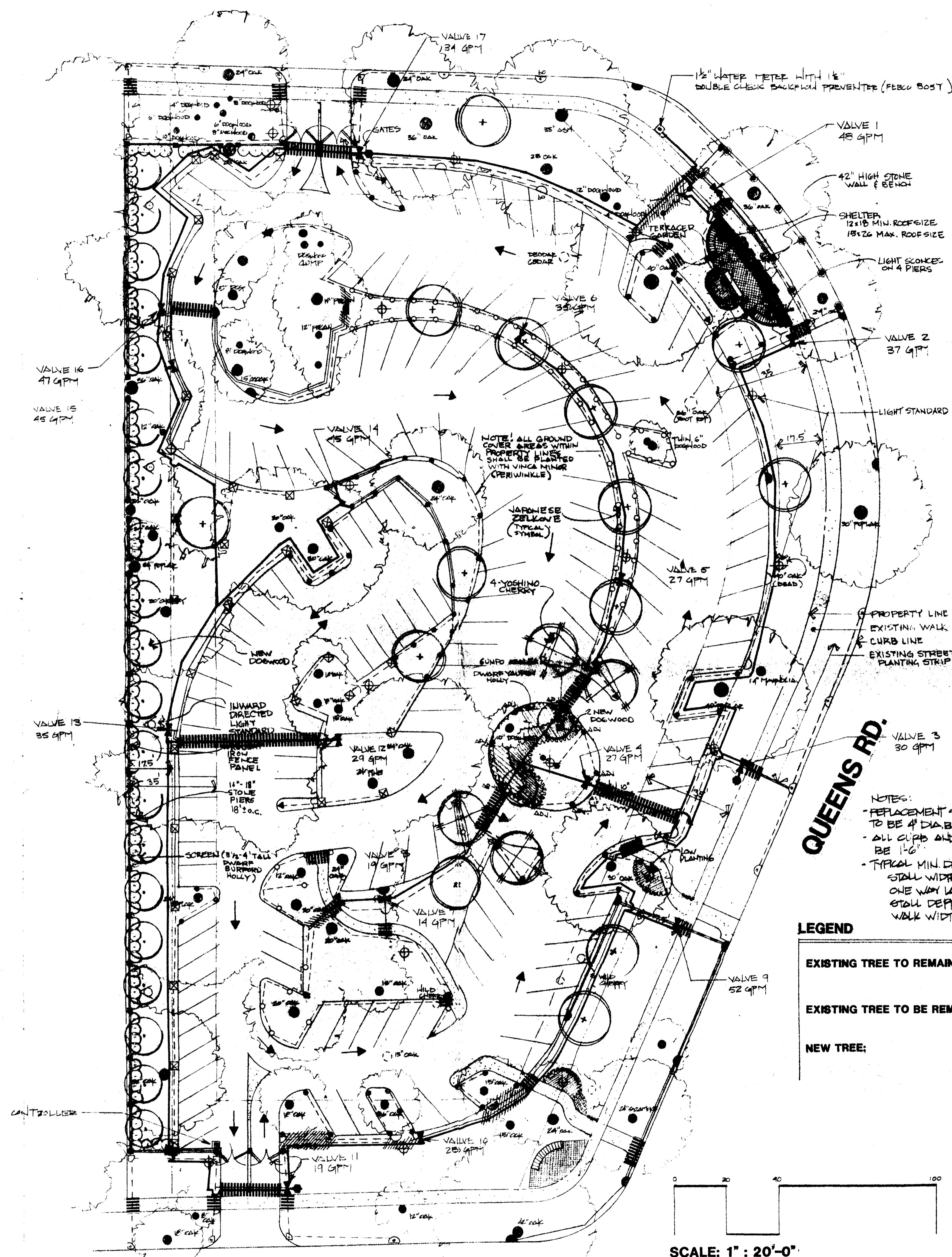
**MYERS PARK UNITED METHODIST CHURCH**  
GRADING & DRAINAGE PLAN

APPROVED BY CITY COUNCIL  
DATE: 9/19/88

2 OF 5

MYERS PARK UNITED METHODIST CHURCH / PARKING LOT  
JORDAN DESIGN COLLABORATIVE, P.A.

HOPEDALE AVE.



**GENERAL NOTES**

- SCOPE: The system is designed to be automatically controlled from a central location. Water supply is from main lines and irrigation contract begins with meter location (meter by the irrigation contractor) as noted on the Plan. Irrigation contractor is to install controllers as coordinated with General Contractor, owner, and architect. Consult through building to below grade, exterior location (when appropriate) by General Contractor.
- DESIGN BASED ON 70 PSI AND 55 GPM MINIMUM. Irrigation Contractor to verify before installation, and inform the Landscape Architect of actual residual pressure and GPM prior to any construction.
- CONTRACTOR OF IRRIGATION SYSTEM shall coordinate all penetration of walls, walks, and location of underground lines with General Contractor.
- IRRIGATION CONTRACTOR shall coordinate location of heads and lines with Landscape Contractor so pipe does not interfere with bed and tree planting. Heads shall water designated areas - i.e. shrub beds in shrub areas. Obtain & confirm the landscape plan prior to construction so that the irrigation system layout.
- PIPE LOCATIONS should be installed as shown on plan whenever possible. Offset deviations of pipe layout from the plan on the as-built drawings. The main line may be placed in the same trench with the lateral line when possible. Place pipes in 4" PVC sleeve (unless noted otherwise) when pipe goes thru walls of under pavement. Place all control wires in a separate 3/4" sleeve within the 4" sleeve. All pipe-to-be-placed below finish line to 12" deep. ~~At least to 6\"~~
- DESIRE LOCATION OF CONTROLLER is indicated on Plan. General Contractor will provide power supply (110 volt grounded outlet) to controllers. Irrigation Contractor is to install controller and connecting control lines.
- ALL SPRINKLER HEAD LOCATED IN PERIMETER SURPLUS BEDS (SEE LANDSCAPE PLAN) ARE TO BE MOUNTED 6" ABOVE GROUND ON GALVANIZED PIPE TRIPLE GUNN JOINTS.
- RAIN GAGGLE TO BE INSTALLED ON SITE. TYPE AND LOCATION TO BE APPROVED BY LANDSCAPE ARCHITECT.

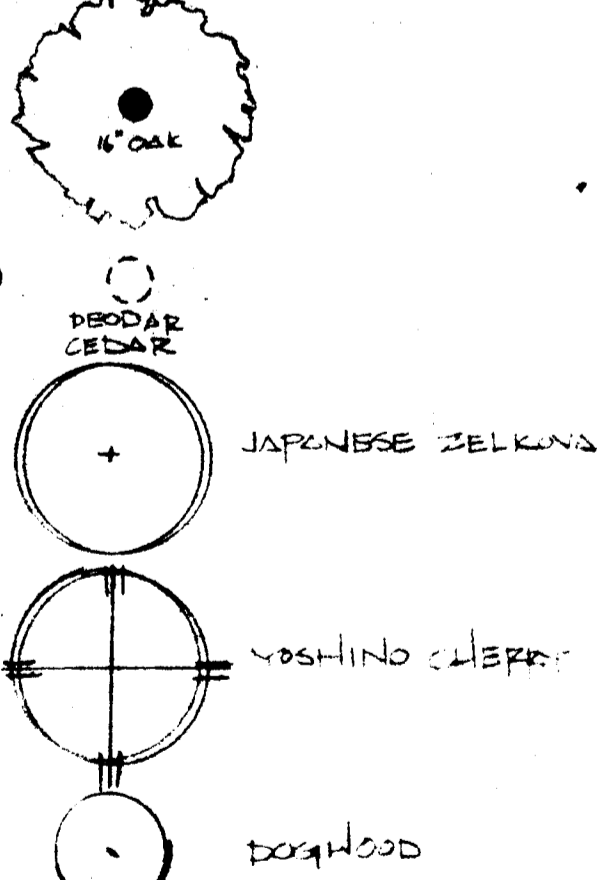
**IRRIGATION LEGEND**

SYMBOL	DESCRIPTION
●	TOP 5000'S; USE 30 NOZZLE FOR QUARTER ACRE AND 40 NOZZLE FOR 1/2 ACRE (SEE NOTE 7)
○	TOP 4000'S; USE 07 NOZZLE (SEE NOTE 7)
⊙	TOP 600-HP; USE 05 NOZZLE
⊗	TOP 670-HP; GRANULAR GALLIUM NOZZLE (8" M-UP IN LAWN AREAS)
⊕	TOP 670-HP; GRANULAR GALLIUM NOZZLE
⊖	TOP 670-HP; GRANULAR GALLIUM NOZZLE
⊗	TOP 670-HP; GRANULAR GALLIUM NOZZLE
⊕	1" PVC PIPE; CLASS 200
⊖	1" PVC PIPE; CLASS 160
⊗	1 1/2" PVC PIPE; CLASS 160
⊘	2" PVC PIPE; CLASS 160
⊙	4" PVC SLEEVE; SCHEDULE 40
⊖	1 1/2" ELECTRIC VALVE; TOP 282 SERIES
⊕	3/4" QUICK COUPLER
⊖	DENOTES AREA TO BE TUNNELLED, NOT TRENCHED, TO AVOID EXCESSIVE TREE ROOT DAMAGE
⊙	TOP 570-SP; STANDARD GALLIUM

NOTES:  
 - REPLACEMENT SIZE TREES TO BE 4" DIA. BREAST HEIGHT.  
 - ALL CURB AND GUTTER TO BE 14".  
 - TYPICAL MIN. DIMENSIONS:  
 STALL WIDTH = 8.5'  
 ONE WAY LANE WIDTH = 16.0'  
 STALL DEPTH = 13.0'  
 WALK WIDTH = 4.0'

**LEGEND**

●	EXISTING TREE TO REMAIN
○	EXISTING TREE TO BE REMOVED
⊕	NEW TREE:
⊕	JAPANESE BELLEVUE
⊕	YOSHINO CHERRY
⊕	DOEWOOD



SCALE: 1" = 20'-0"  
 156 PARKING SPACES

PEMBROKE AVE.

QUEENS RD.

**MYERS PARK UNITED METHODIST CHURCH / PARKING LOT**

JORDAN DESIGN COLLABORATIVE, P.A.

**JORDAN DESIGN COLLABORATIVE, P.A.**  
 LAND PLANNING DESIGN  
 LANDSCAPE ARCHITECTURE  
 P.O. BOX 3702  
 CHARLOTTE, NORTH CAROLINA 28027  
 151 BIRCHWOOD COURT, 704-533-4725

**MYERS PARK UNITED METHODIST CHURCH**  
**IRRIGATION PLAN**

3  
 of 5

DATE: 12/15/2015  
 REVISIONS:

