

GENERAL NOTES:

- ALL CLEARING DEBRIS SHALL BE DISPOSED OF OFF-SITE IN AN APPROVED LOCATION. NO ON-SITE BURIAL IS PERMITTED FOR THIS PROJECT.
- SEE SHEET L-5 FOR CONSTRUCTION SEQUENCE AND SCHEDULING.
- SOIL TYPE: ENKH SANDY LOAM, TREDWELL FINE SANDY LOAM

TREE PRESERVATION NOTES:

- ALL EXISTING TREES 8" DIAMETER OR LARGER LOCATED WITHIN THE 25' FRONT SETBACK ARE SHOWN ON THIS PLAN.
- ALL EXISTING TREES 8" DIAMETER OR LARGER LOCATED WITHIN THE 25' FRONT SETBACK SHALL REMAIN, UNLESS SPECIFICALLY NOTED FOR REMOVAL. A TREE REMOVAL PERMIT MUST BE OBTAINED FROM THE CITY ENGINEER PRIOR TO REMOVAL OF THESE TREES.
- EXISTING TREES TO REMAIN LOCATED WITHIN THE 25' FRONT SETBACK SHALL BE PROTECTED WITH TREE PROTECTION FENCING AS SHOWN ON PLAN, AND ALL MATERIALS, EQUIPMENT, OR SOIL SHALL BE STORED WITHIN THE FENCED AREA.
- WITHIN THE AREA FENCED FOR TREE PROTECTION, EXISTING VEGETATION LESS THAN 8" IN DIAMETER, INCLUDING ALL VINES AND BRUSH, SHALL BE REMOVED BY HAND; NO GRUBBING OF ROOTS WILL BE PERMITTED.

LEGEND

EXISTING CONTOURS	(Symbol)
PROPOSED CONTOURS	(Symbol)
PROPOSED SPOT ELEV.	(Symbol)
BREAK POINT	(Symbol)
DIRECTION OF DRAINAGE	(Symbol)
DRAINAGE STRUCTURE & PIPE	(Symbol)
STEPS	(Symbol)
TOP OF STEP ELEV.	(Symbol)
BOTTOM OF STEP ELEV.	(Symbol)
FINISHED FLOOR ELEV.	(Symbol)
DROP INLET	(Symbol)
YARD INLET	(Symbol)
MANHOLE	(Symbol)
EDGE OF EXISTING WOODS TO REMAIN	(Symbol)
PROTECTED DRAIN INLET	(Symbol)

SITE DATA

TOTAL SITE AREA:	2.26 AC.
EXISTING ZONING:	B-1 (SC3)
GROSS BUILDING AREA:	NOT TO EXCEED 26,000 S.F.
GROSS FLOOR AREA FOR PUBLIC USE:	19,500 S.F. (16,264 SF)
# EMPLOYEES ON SHEET OF GREATEST EMPLOYMENT:	10
# PARKING SPACES REQUIRED:	135 SPACES (127 SPACES)
# PARKING SPACES PROVIDED:	135 SPACES (134 SPACES)
HANDICAP PARKING SPACES PROVIDED:	3
TOTAL DISTURBED AREA:	2.5 ACRES

DRAINAGE NOTES:

DI = DROP INLET, CITY STD. #20.13, #20.14 (OMIT CONC. APRON)
 CI = CURB INLET, CITY STD. #20.01
 MH = MANHOLE, CITY STD. #20.08, #20.09, OR #20.11

SCALE: 1"=30'-0"

corrected to morrison
 dated 03/19/91 by
 Martin R. Cantor, Jr.

CHARLOTTE-MECKLENBURG PLANNING COMMISSION INTER-OFFICE COMMUNICATION

DATE: March 1, 1991

FROM: Martin R. Cantor, Jr., Planning Director

TO: Robert Brandon, Zoning Administrator

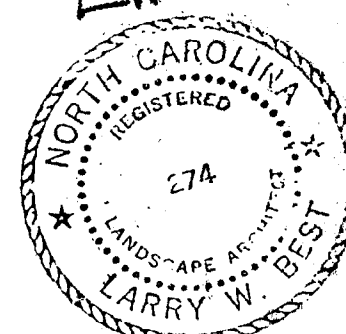
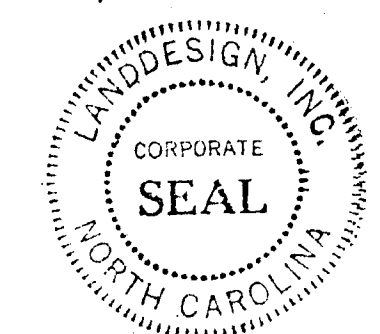
SUBJECT: Specific Approval of Plans for the Public Library at Morrocroft, Part of Petition #89-68 by Public Library of Charlotte, Tax Parcel #183-171-10

Attached is a set of specific plans for the public library at Morrocroft. We have reviewed the plan and find it to be in compliance with the conditions of petition #89-68. Please use this plan when evaluating requests for building permits and certificates of occupancy.

MRC:R/201:als
 Attachment

Architects

324 N. COLLEGE ST.
P.O. BOX 34128
CHARLOTTE, N.C. 28234
704/333-6686



PROGRESS DATES

Land Design

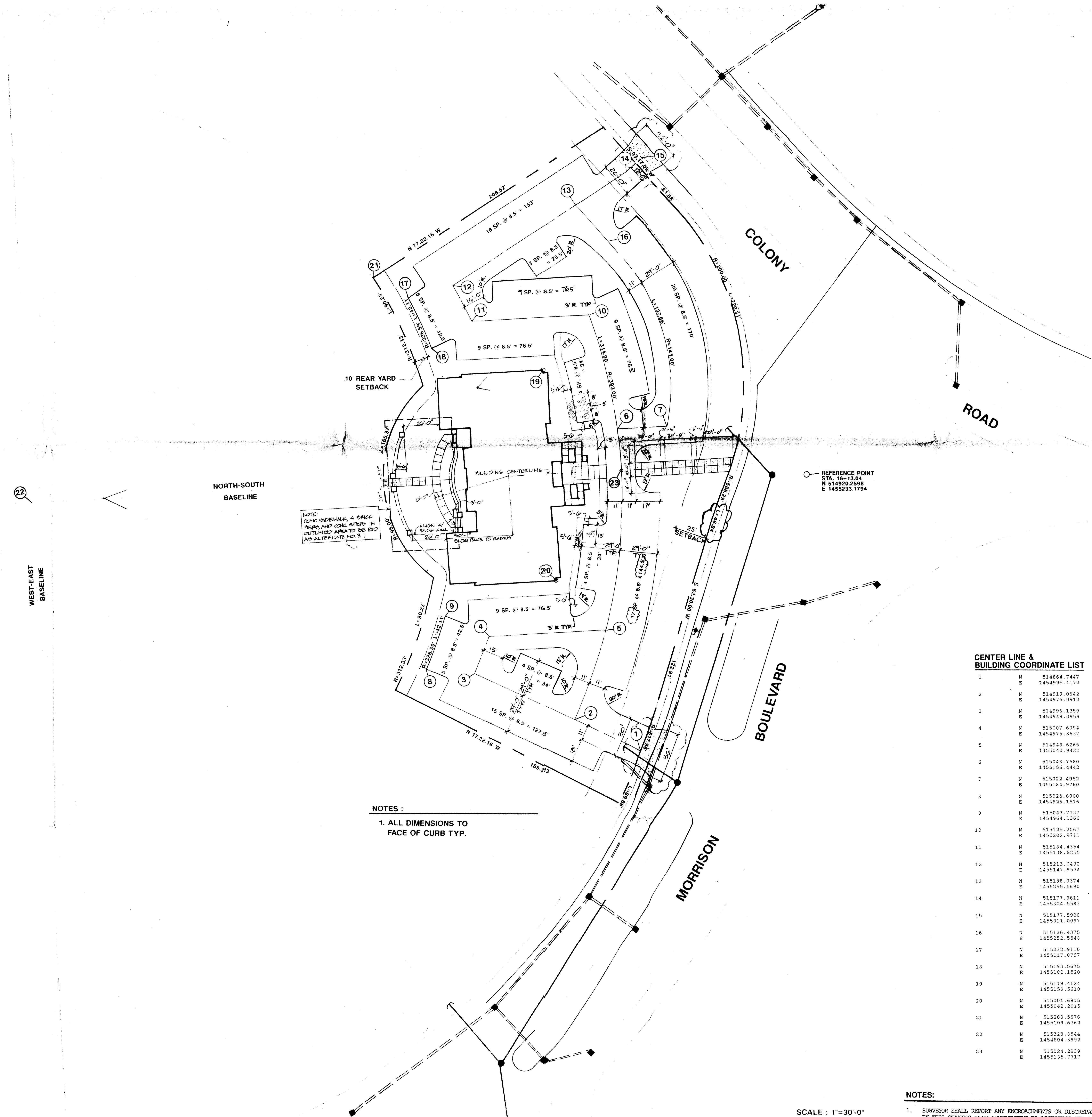
Land Design

Landscape Architecture Land Planning
Urban Design

• 1701 East Boulevard, Charlotte, NC 28203 704/333-0325
• 1216 Prince Street, Alexandria, VA 22314 703/549-3784
• 225 Hillsborough Street, Raleigh, NC 919/854-6127

REVISIONS

- 1-20-90: BOUNDARY DISTANCE CORRECTION TO MORRISON BLVD DRIVEWAYS TO DROP-CURB TYPE CHANGE ALT #4 TO #3, REVISE COLUMN LOCATIONS AND EXTEND SIDEWALK IN ALTERNATE #3 AREA
- 2-26-91: DELETE 1 PARKING SPACE NEAR COORD PT #5



NOTE:
CONC SIDEWALK, 4 BRICK
PARKING AND CONC STEPS IN
OUTLINED AREA TO BE BLDG
ALT ALTERNATE #3

NOTES:
1. ALL DIMENSIONS TO
FACE OF CURB TYP.

REFERENCE POINT
STA. 16+13.04
N 514920.2598
E 1455235.1794

**CENTER LINE &
BUILDING COORDINATE LIST**

Point	N	E
1	514864.7447	1454993.1172
2	514919.0642	1454976.0912
3	514996.1359	1454949.0959
4	515007.6094	1454976.8637
5	514948.6266	1455040.9422
6	515048.7580	1455156.4442
7	515022.4952	1455184.9760
8	515025.6060	1454926.1516
9	515043.7137	1454994.1366
10	515125.2067	1455202.0711
11	515104.4354	1455138.6255
12	515213.0492	1455147.9534
13	515188.9374	1455255.5690
14	515177.9611	1455304.5583
15	515177.5906	1455311.0097
16	515136.4375	1455252.5548
17	515232.9110	1455117.0797
18	515193.5675	1455100.1520
19	515119.4124	1455150.5610
20	515001.6915	1455042.2015
21	515260.5676	1455109.6762
22	515328.8544	1454804.8992
23	515024.2939	1455135.7717

SCALE: 1"=30'-0"

- NOTES:
1. SURVEYOR SHALL REPORT ANY ENCROACHMENTS OR DISCREPANCIES GENERATED BY THIS STAKING PLAN IMMEDIATELY TO ARCHITECT FOR RESPONSE.
 2. DIMENSIONS ARE TO CURB FACE TYPICAL.
 3. SEE GRADING PLAN FOR DRAINAGE STRUCTURE LAYOUT.
 4. SEE ARCHITECTURAL DRAWINGS FOR EXACT BUILDING DIMENSIONS.
 5. SURVEYOR SHALL VERIFY CLOSURE AND ACCURACY OF CURVE DATA PRIOR TO COMMENCEMENT OF FIELD STAKING.

**SHARON
REGIONAL
LIBRARY**

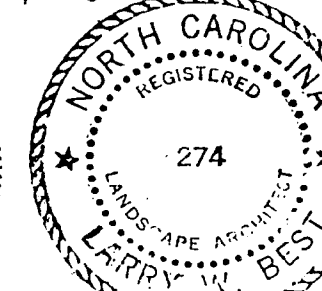
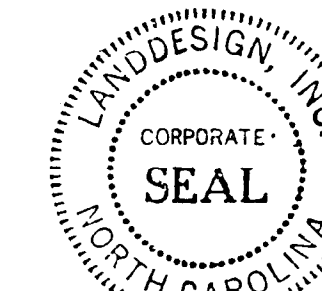
CHARLOTTE, N.C.

LAYOUT PLAN

PROJECT 89132
DATE JAN. 5, 1990

Architects

324 N. COLLEGE ST.
P.O. BOX 34128
CHARLOTTE, N.C. 28234
704/333-6686



PROGRESS DATES

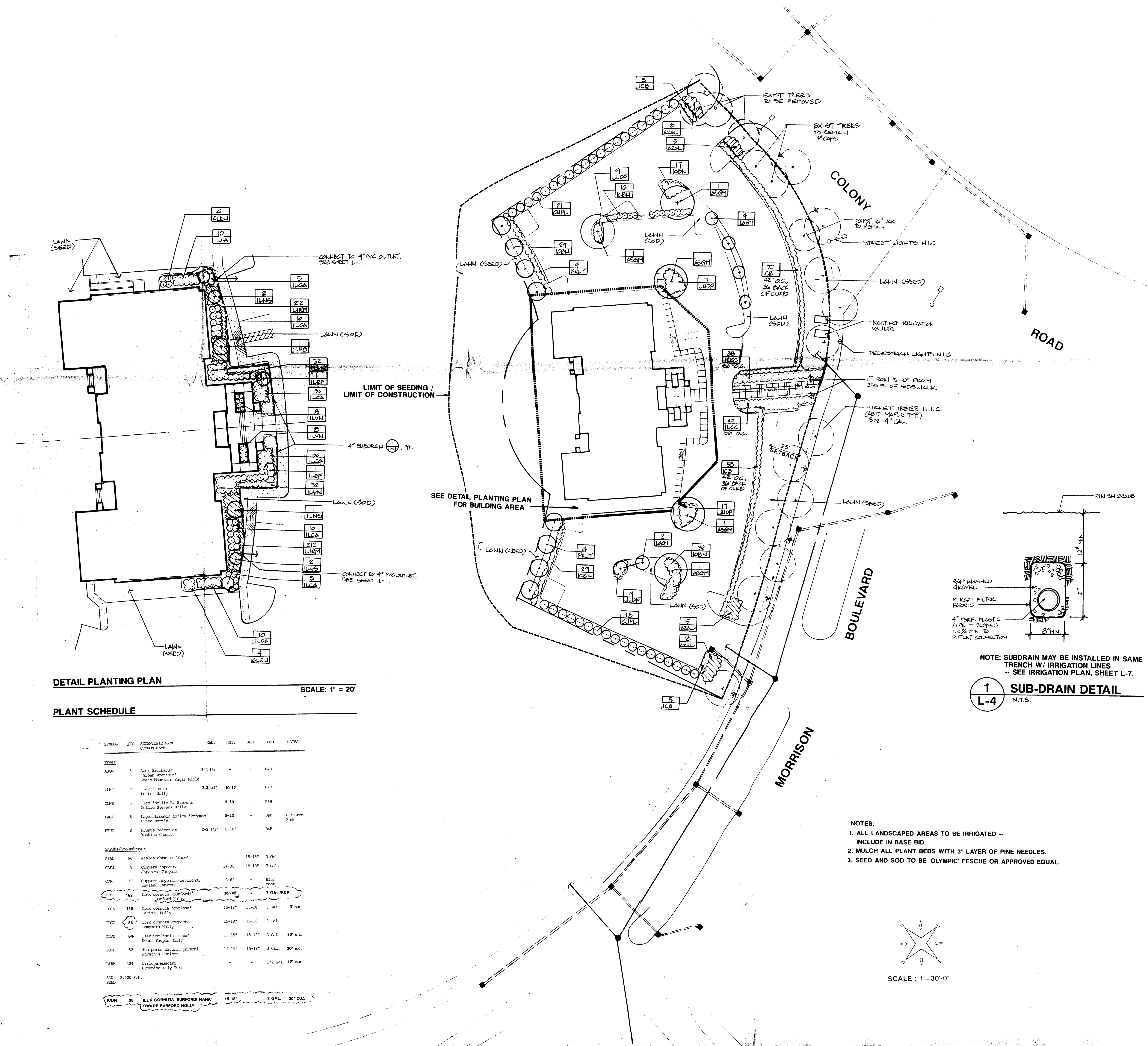
Land Design

Land Architecture Land Planning
Urban Design

1701 East Boulevard, Charlotte, NC 28203 704/333-0325
1216 Prince Street, Alexandria, VA 22314 703/549-7784
225 Hillsborough Street, Raleigh, NC 919/834-0127

REVISIONS:

2/5/90: REVISE ICBN, ILCC QUANTITIES
ADD ICB TO PLANT SCHEDULE

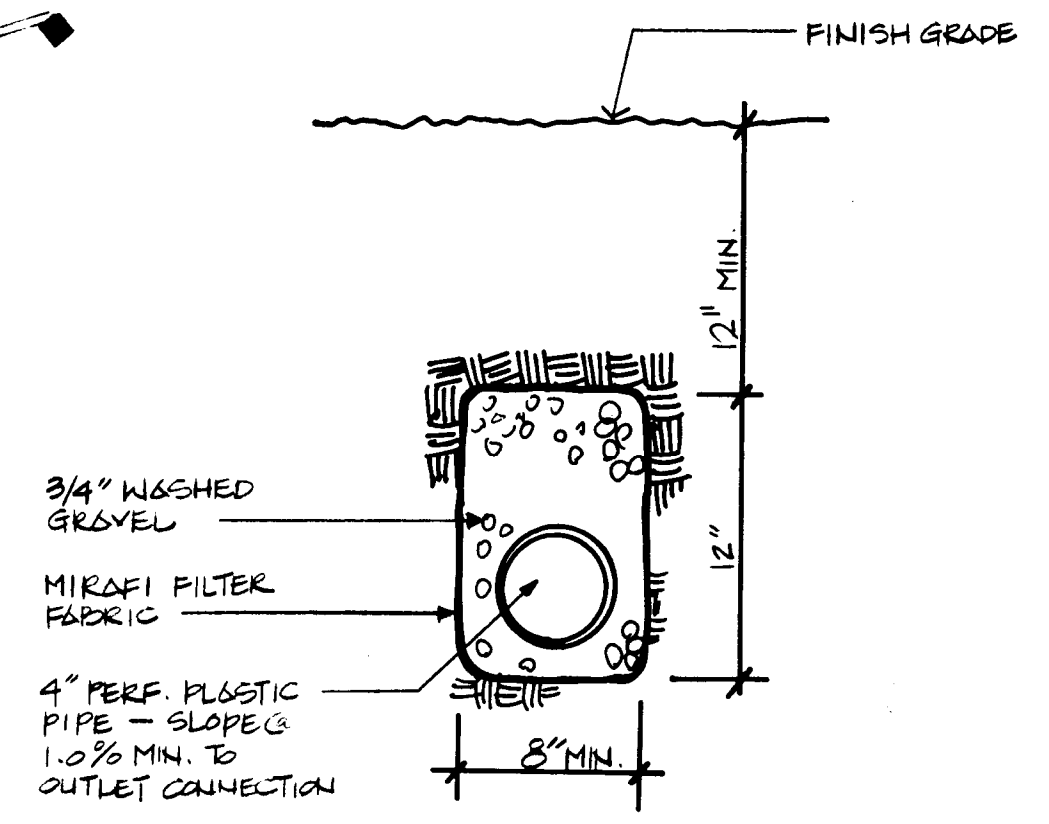


DETAIL PLANTING PLAN

SCALE: 1" = 20'

PLANT SCHEDULE

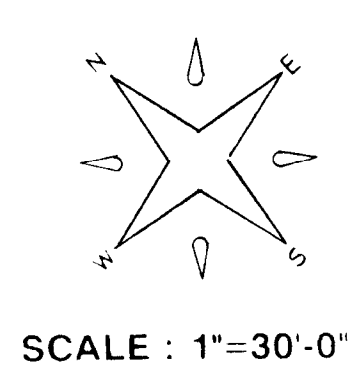
SYMBOL	QTY.	SCIENTIFIC NAME COMMON NAME	DL.	HGT.	SFD.	CURD.	NOTES
Trees							
ASDN	5	Acer saccharum 'Green Mountain' Green Mountain Sugar Maple	3-3 1/2"	-	-	BAR	
IL23	2	Ilex 'Natchez' Natchez Holly	3-3 1/2"	10-12'	-	BAR	
ILMS	6	Ilex 'Mollie R. Stevens' Mollie Stevens Holly	9-10"	-	-	BAR	
LAGI	6	Lagerströmia lindica 'Petowae' Clape Myrtle	8-10"	-	-	BAR	4-7 Stem Pink
PRTY	8	Prunus tobira Yoshino Cherry	2-2 1/2"	8-10"	-	BAR	
Shrubs/Groundcover							
AZAL	66	Azalea obtusum 'Snow'	-	15-18"	-	3 Gal.	
CLEF	8	Cleyera japonica Japanese Cleyera	24-30"	15-18"	-	7 Gal.	
COPL	39	Chrysanthoides loylandii Loyland Cypress	5-6'	-	-	MINI/ CONT.	
ICB	162	Ilex cornuta 'Burfordii' Burford Holly	38-42"	-	-	7 GAL/BAR	
ILCA	110	Ilex cornuta 'curiosa' Carissa Holly	15-18"	15-18"	-	3 Gal.	3 o.e.
ILCC	83	Ilex crenata compacta Compacta Holly	15-18"	15-18"	-	3 Gal.	
ILNK	64	Ilex vomitoria 'nana' Dwarf Yaupon Holly	12-15"	15-18"	-	3 Gal.	30' o.e.
JUNP	52	Juniperus davurica parsonii Parson's Juniper	12-15"	15-18"	-	3 Gal.	30' o.e.
LIRM	424	Liriodendron tulipifera Common Lily Turf	-	-	-	1/2 Gal.	12' o.e.
SOD	2,120 S.F.	SEED					
ICBN	96	Ilex cornuta 'Burfordii Nana' Dwarf Burford Holly	15-18"	-	-	3 Gal.	30' O.C.



NOTE: SUBDRAIN MAY BE INSTALLED IN SAME TRENCH W/ IRRIGATION LINES -- SEE IRRIGATION PLAN, SHEET L-7.

1
L-4
SUB-DRAIN DETAIL
N.T.S.

- NOTES:
- ALL LANDSCAPED AREAS TO BE IRRIGATED -- INCLUDE IN BASE BID.
 - MULCH ALL PLANT BEDS WITH 3" LAYER OF PINE NEEDLES.
 - SEED AND SOD TO BE 'OLYMPIC' FESCUE OR APPROVED EQUAL.



SHARON
REGIONAL
LIBRARY

CHARLOTTE, N.C.

PLANTING PLAN

PROJECT 89132
DATE JAN. 5, 1990

L-4