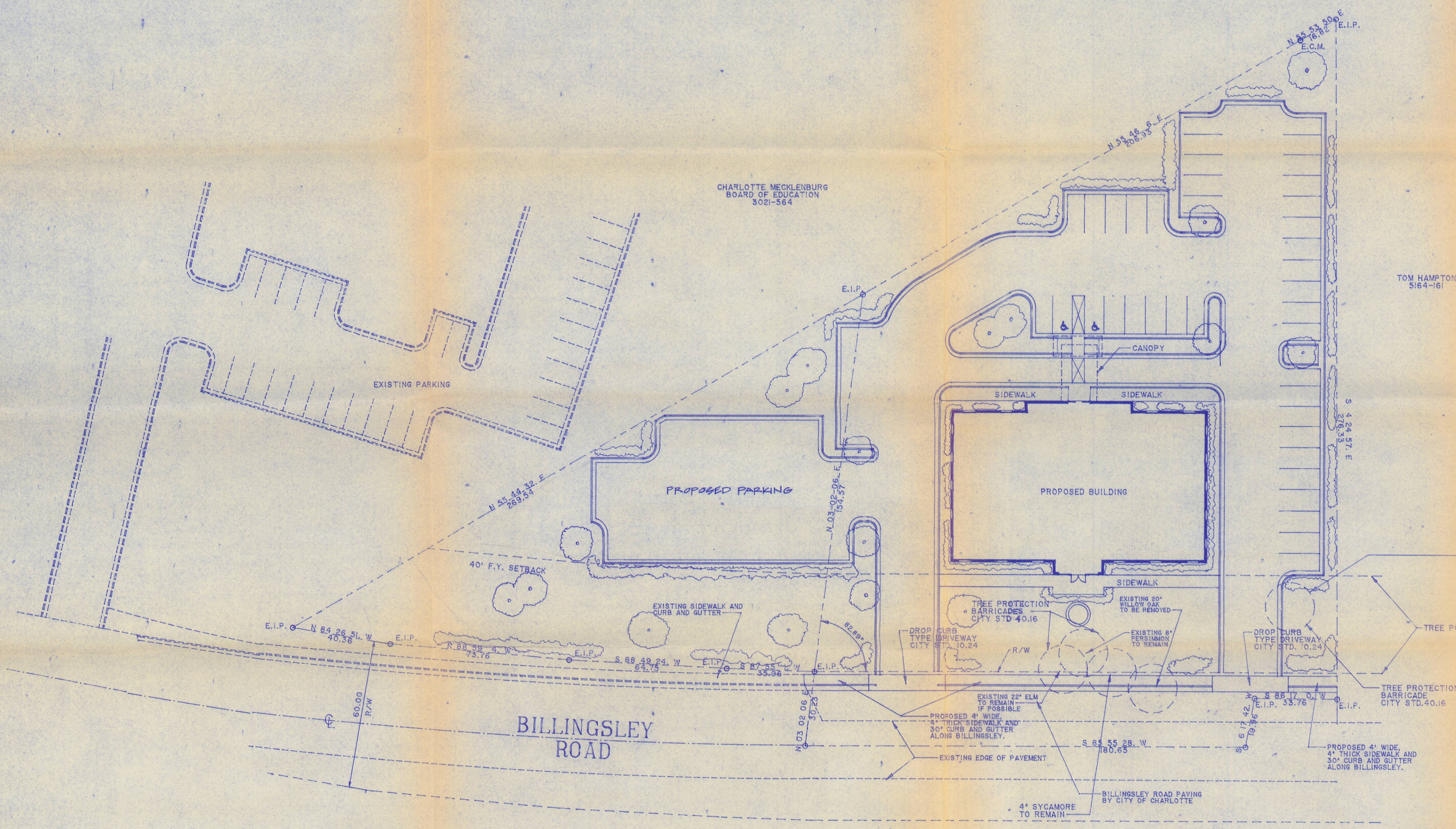
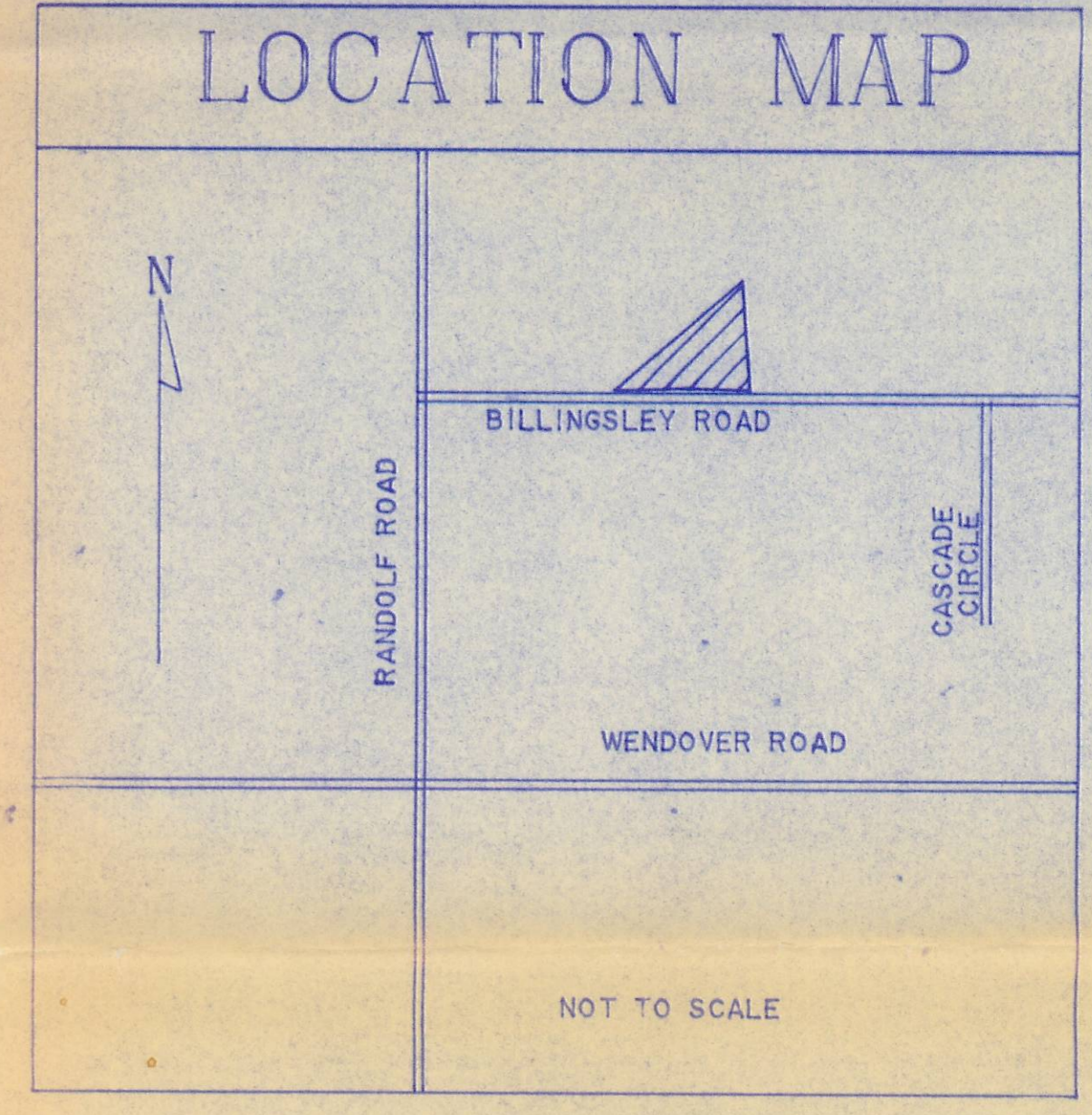


REVISIONS		
NO.	DATE	DESCRIPTION



SITE PLAN
SCALE: 1"=20'-0"

NOTE:
SITE TO COMPLY WITH
CITY OF CHARLOTTE
TREE ORDINANCE.

NOTES:

- 1.) SITE AREA - 1.5 ACRES
- 2.) BUILDING AREA - FIRST FLOOR - 6724 S.F.
SECOND FLOOR - 6724 S.F.
TOTAL - 13,448 S.F.
- 3.) OCCUPANCY - MEDICAL OFFICES
- 4.) TOTAL PARKING REQUIRED - 65 SPACES
TOTAL PARKING PROVIDED - 65 SPACES
- 5.) ALL CURB AND GUTTER TO BE 24" U.H.O.
- 6.) DIMENSIONS FROM BACK OF CURB TYP.
- 7.) ALL PAVING TO BE 6" STONE BASE AND 2" ASPHALT.

LEGEND

- EXISTING PAVING, CURB, BUILDING, ETC.
- PROPERTY LINE
- R/W OR SETBACK LINE
- E.I.P. EXISTING IRON PIN
- E.C.M. EXISTING CONCRETE MONUMENT

APPROVED BY CITY COUNCIL
DATE 11/26/89

89-79
see administrative approval dated 11/26/89 for 89-79

ISSUED BY:	DATE ISSUED:	ISSUED TO:	PART NO. (OTHER, IF POSS. 01)
ESTWANK BUILDING			
BILLINGSLEY ROAD CHARLOTTE, N.C.			OWNER
S.C. HONDROS & ASSOCIATES, INC.			
ENGINEERS & CONTRACTORS P.O. BOX 220456 CHARLOTTE, N.C. 28222 PH 377-4614			
DRN BY: TOL	CHK BY:	SCALE: 1"=20'-0"	DATE: 9-26-89
SITE PLAN			S-1 OF 4