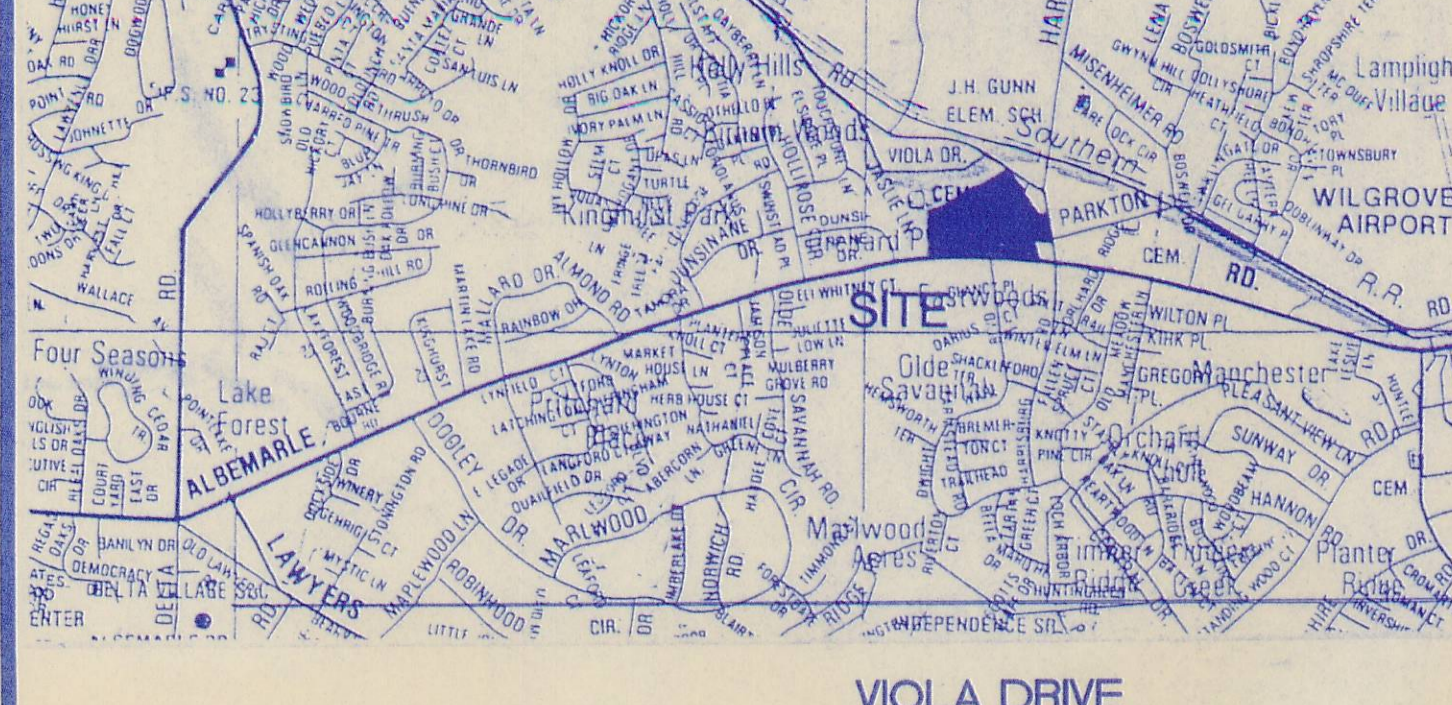
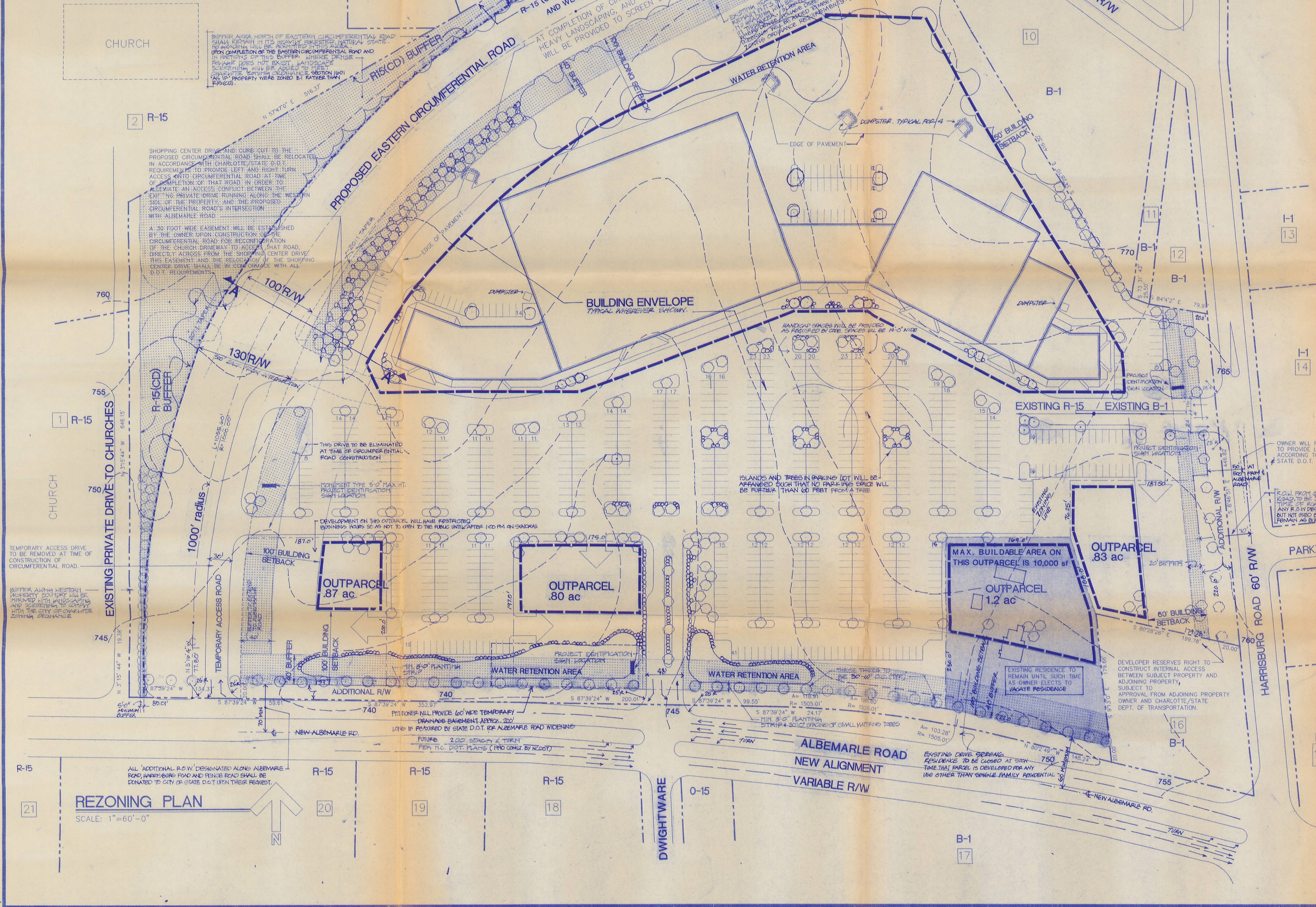


VICINITY MAP



NAMES AND ADDRESSES OF ALL ADJOINING PROPERTY OWNERS ARE SET FORTH ON ATTACHED EXHIBIT 'A' IN THE ORDER WHICH CORRESPONDS WITH THE PARCEL NUMBERS DEPICTED AROUND THE PERIMETER OF THIS REZONING PLAN.

PETITIONER: CHARTER PROPERTIES, INC. 129 WEST TRADE STREET SUITE 1200 CHARLOTTE, NC 28202 ARCHITECTS: LITTLE & ASSOCIATES ARCHITECTS, INC. 5815 WESTPARK DRIVE CHARLOTTE, NC 28217



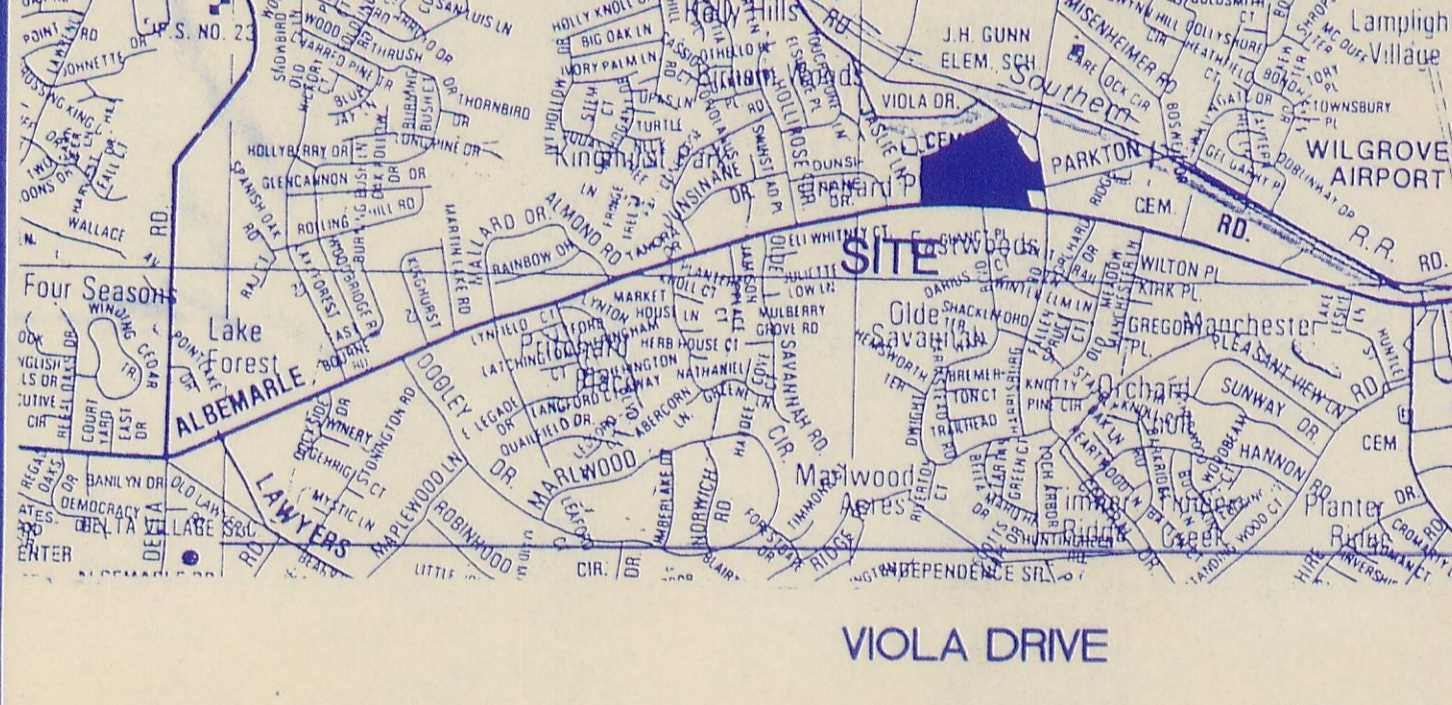
DEVELOPMENT DATA table with columns for EXISTING ZONING, PROPOSED ZONING, GROSS ACREAGE, ACREAGE OF RESERVED RIGHT-OF-WAY, MAXIMUM ALLOWABLE BUILDING AREA, TOTAL AREA BUILDABLE ON OUTPARCELS, TOTAL AREA OF SHOPPING CENTER, TOTAL PARKING SHOWS, and TOTAL PARKING REQUIRED AT 1/200.

- GENERAL PROVISIONS, PERMITTED USES, SETBACKS, BUFFERES, LANDSCAPING & SCREENING, PARKING, LIGHTING, SIGNS, MAXIMUM BUILDING HEIGHT, ACCESS POINTS (DRIVEWAYS), FIRE PROTECTION, ARCHITECTURAL CONTROLS, STORM WATER MANAGEMENT, CIRCUMFERENTIAL ROAD, FINISHING.

Vertical sidebar containing Little & Associates Architects logo, Charter Properties Inc. logo, and project details including project number 2058 and rezoning plan RZ-2-2.

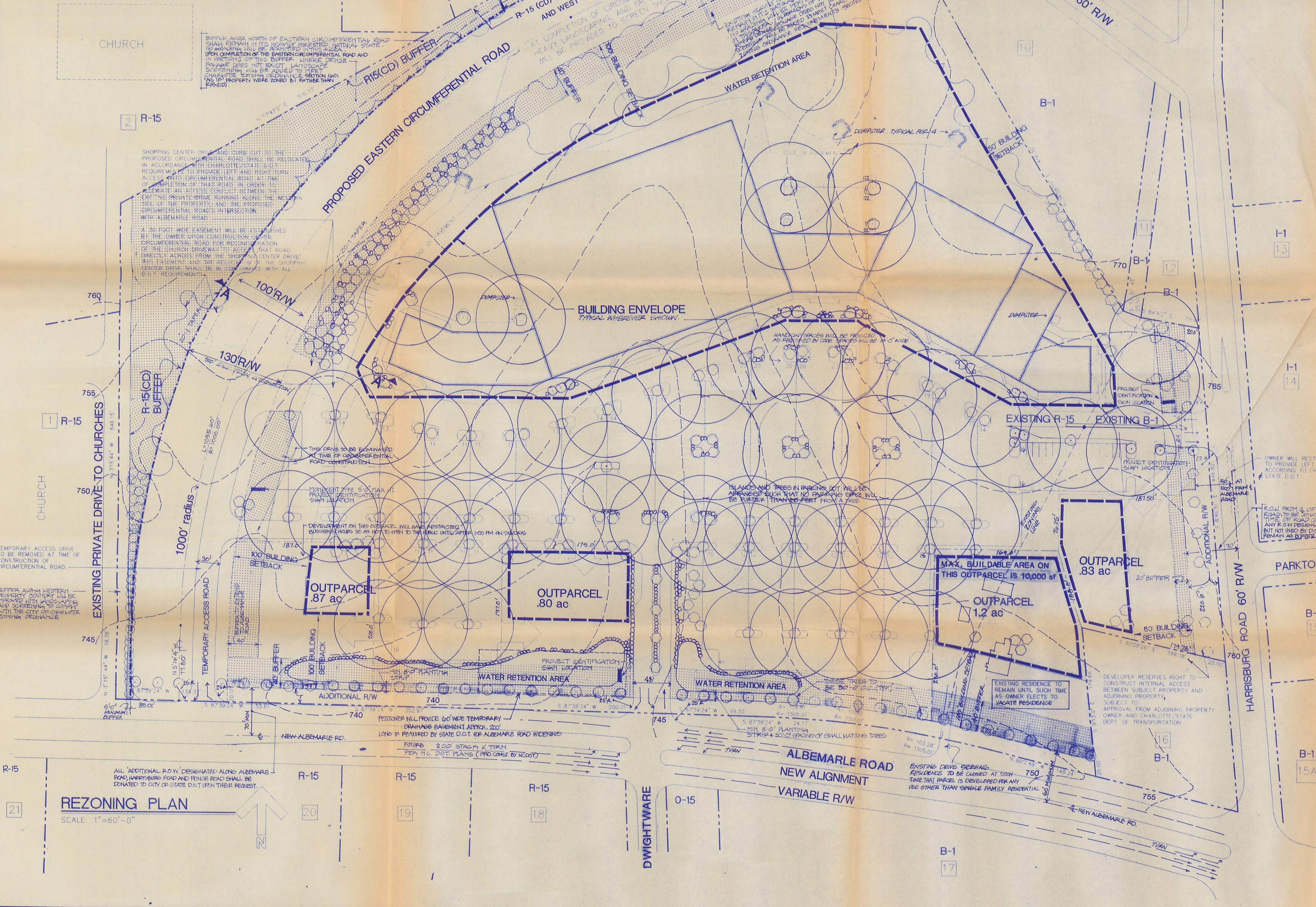
Handwritten notes: #87-84, Recommended for approval by P.C. 10/23/09, see discussion approach 10/24/09.

VICINITY MAP



NAMES AND ADDRESSES OF ALL ADJOINING PROPERTY OWNERS ARE SET FORTH ON ATTACHED EXHIBIT 'A' IN THE ORDER WHICH CORRESPONDS WITH THE PARCEL NUMBERS DEPICTED AROUND THE PERIMETER OF THIS REZONING PLAN.

PETITIONER: CHARTER PROPERTIES, INC. 129 WEST TRADE STREET SUITE 1200 CHARLOTTE, NC 28202 ARCHITECTS: LITTLE & ASSOCIATES ARCHITECTS, INC. 5815 WESTPARK DRIVE CHARLOTTE, NC 28217



DEVELOPMENT DATA table with columns for EXISTING ZONING, PROPOSED ZONING, GROSS ACREAGE, ACREAGE OF RESERVED RIGHT-OF-WAY, MAXIMUM ALLOWABLE BUILDING AREA, TOTAL AREA BUILDABLE ON OUTPARCELS, TOTAL AREA OF SHOPPING CENTER, TOTAL PARKING SHOWS, and TOTAL PARKING REQUIRED AT 1/200.

- GENERAL PROVISIONS, PERMITTED USES, SETBACKS, BUFFERES, LANDSCAPING & SCREENING, PARKING, LIGHTING, SIGNS, MAXIMUM BUILDING HEIGHT, ACCESS POINTS (DRIVEWAYS), FIRE PROTECTION, ARCHITECTURAL CONTROLS, STORM WATER MANAGEMENT, CIRCUMFERENTIAL ROAD, FINISHING.

Vertical sidebar containing Little & Associates Architects logo, Charter Properties Inc. logo, and project details including project number 2058 and rezoning plan RZ-2-2.