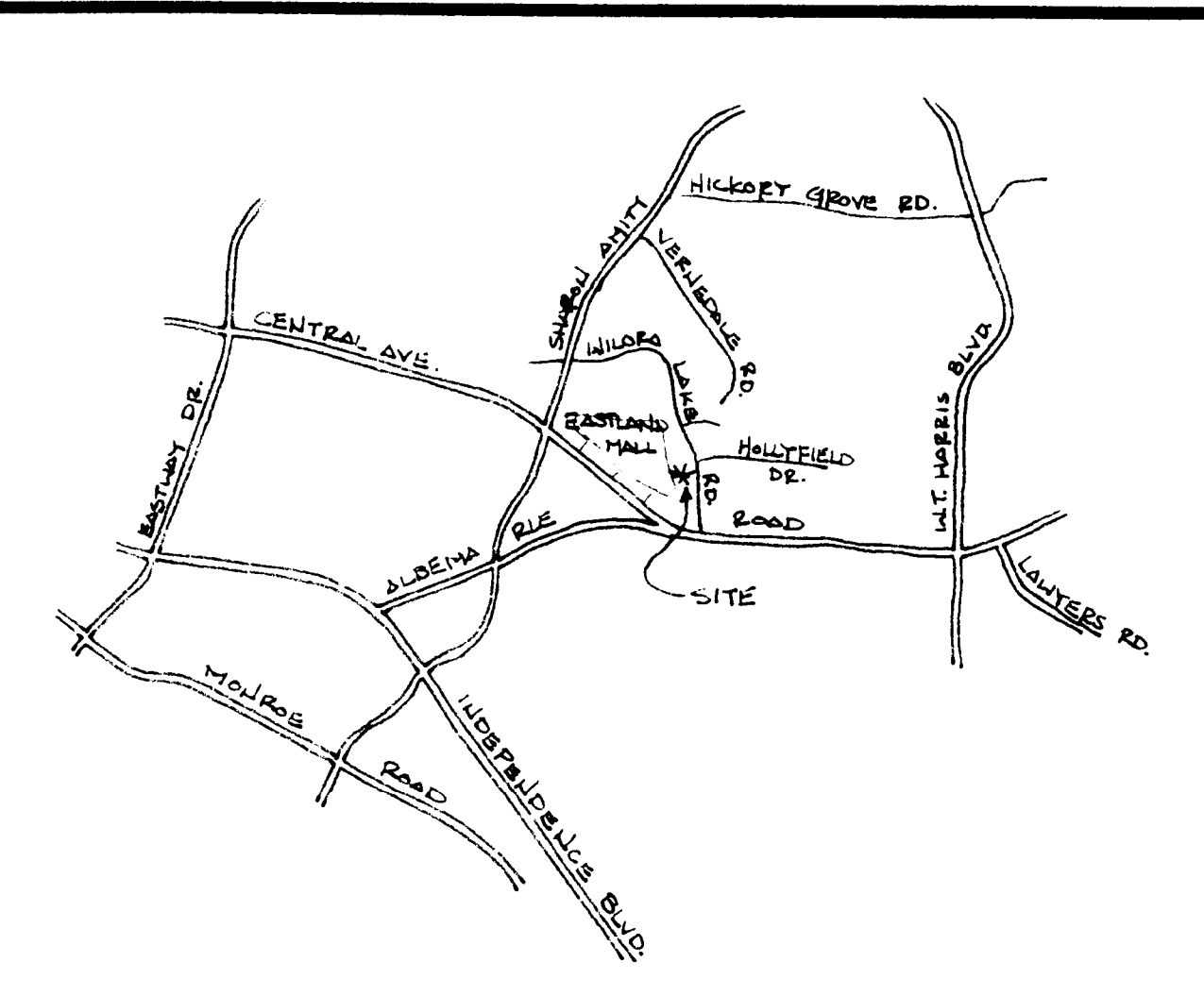
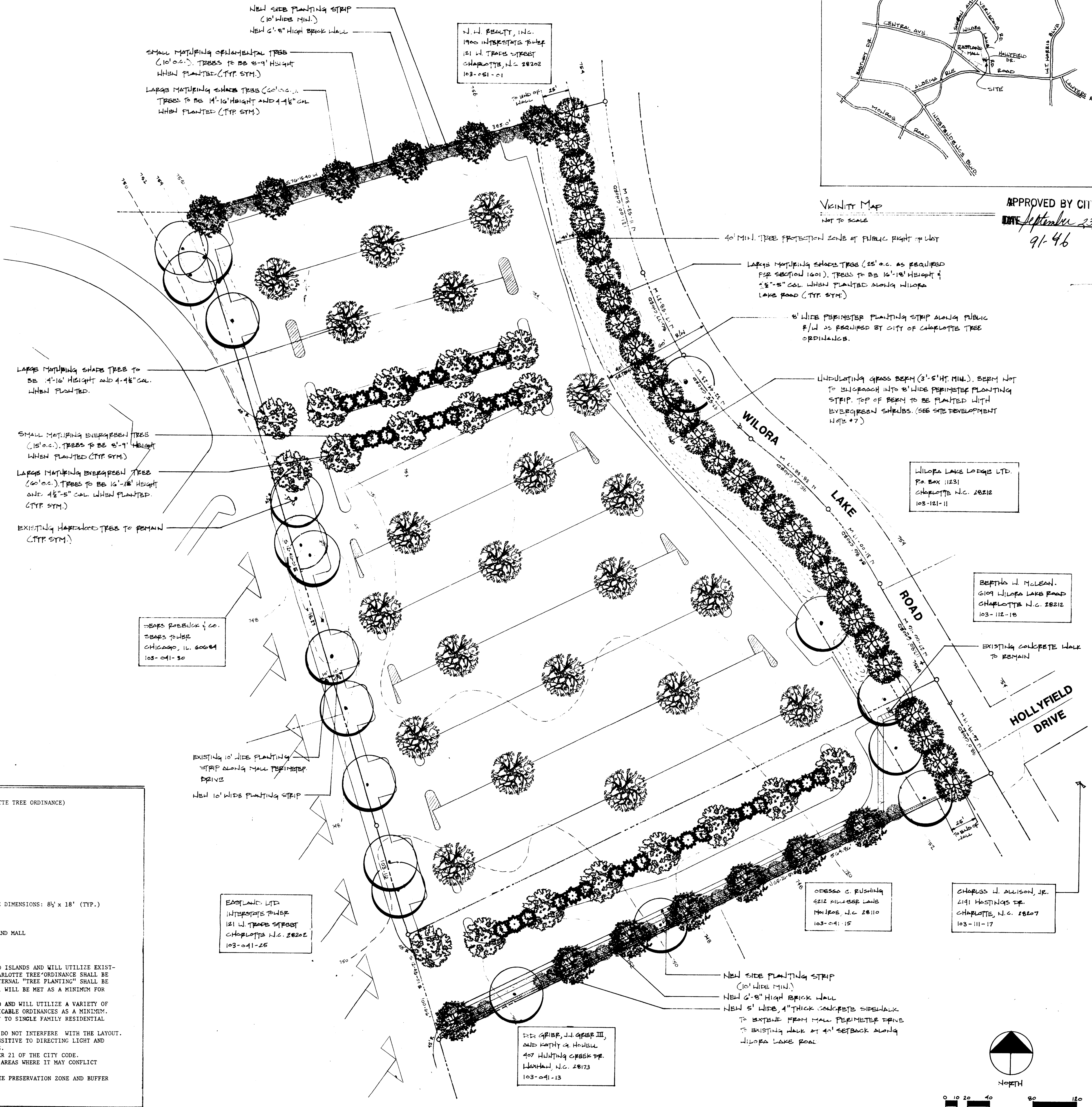


**SITE DEVELOPMENT NOTES**

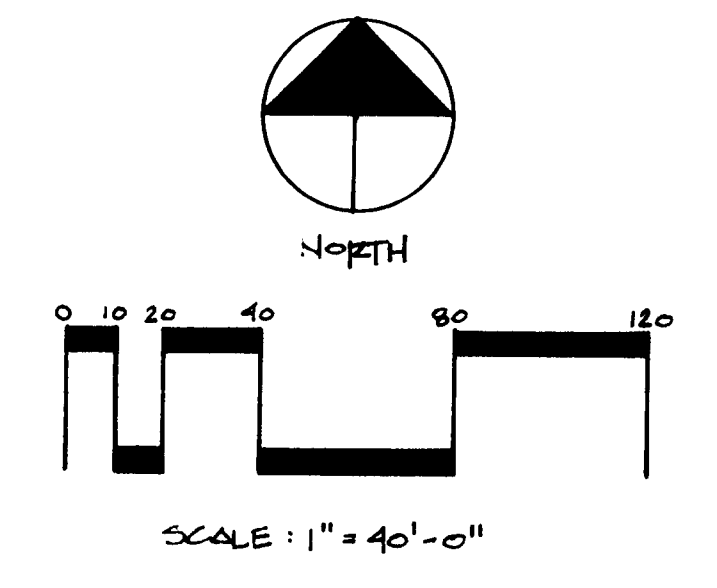
**INTERNAL PLANTING REQUIREMENTS: (PER CITY OF CHARLOTTE TREE ORDINANCE)**  
 245,000 S.F. OF IMPERVIOUS SURFACE =  
 24,500 S.F. OF PLANTING AREA REQUIRED  
 (76,000 S.F. OF PLANTING AREA PROVIDED)  
 25 INTERNAL TREES REQUIRED  
 (122 TREES PROVIDED)  
 1 TREE WITHIN 60' OF EVERY PARKING SPACE

**EXISTING ZONING:** R-9  
**PROPOSED ZONING:** O-15CD  
**PARKING:** ±700 PARKING SPACES PROVIDED, PARKING SPACE DIMENSIONS: 8' x 18' (TYP.)  
**SITE ACREAGE:** 7.894 ACRES  
**PURPOSE:** PROVIDE PARKING IN CONJUNCTION WITH EASTLAND MALL

**DEVELOPMENT NOTES:**  
 1. PARKING AREAS SHALL BE BROKEN UP WITH LANDSCAPED ISLANDS AND WILL UTILIZE EXISTING TREES WHERE FEASIBLE. PROVISIONS OF THE CHARLOTTE TREE ORDINANCE SHALL BE OBSERVED AS A MINIMUM. THE REQUIREMENTS FOR INTERNAL "TREE PLANTING" SHALL BE ADHERED TO, AND ALL REQUIREMENTS OF SECTION 1601 WILL BE MET AS A MINIMUM FOR SCREENING ALONG WILORA LAKE ROAD.  
 2. STORM WATER DETENTION WILL BE PROVIDED AS NEEDED AND WILL UTILIZE A VARIETY OF TECHNIQUES TO MEET THE REQUIREMENTS OF ALL APPLICABLE ORDINANCES AS A MINIMUM. NO DETENTION WILL BE ALLOWED IN BUFFERS ADJACENT TO SINGLE FAMILY RESIDENTIAL LOTS, OR IN SETBACKS ALONG WILORA LAKE ROAD.  
 3. ALL EXISTING TREES TO BE RETAINED PROVIDED THEY DO NOT INTERFERE WITH THE LAYOUT.  
 4. LIGHTING PLAN SHALL BE PROVIDED THAT WILL BE SENSITIVE TO DIRECTING LIGHT AND CLARE AWAY FROM ADJACENT RESIDENTIAL PROPERTIES.  
 5. TREES WILL BE REQUIRED IN ACCORDANCE WITH CHAPTER 21 OF THE CITY CODE.  
 6. THE "UNDULATING GRASS BERM" TO BE ELIMINATED IN AREAS WHERE IT MAY CONFLICT WITH EXISTING TREES.  
 7. ALL FUTURE UTILITIES TO BE ROUTED AROUND THE TREE PRESERVATION ZONE AND BUFFER AREAS.



APPROVED BY CITY COUNCIL  
 DATE: September 23, 1997  
 91-46



**DEVELOPERS**

**FAISON ASSOCIATES**

JORDAN DESIGN COLLABORATIVE, P.A.  
 LAND PLANNING / LANDSCAPE ARCHITECTURE  
 150 BRYARD COURT CHARLOTTE, N.C. 28202

**REZONING SITE PLAN - PARKING LOT FOR EASTLAND**

**FOR PUBLIC HEARING**

REVISIONS	PROJ. NO.
0-14-91	6-19-91
DATE	SHEET NO.
4-29-91	1
DWN BY	CKD BY