

STUDIO PLUS at UNIVERSITY PLACE
McCULLOUGH ROAD
CHARLOTTE, NORTH CAROLINA

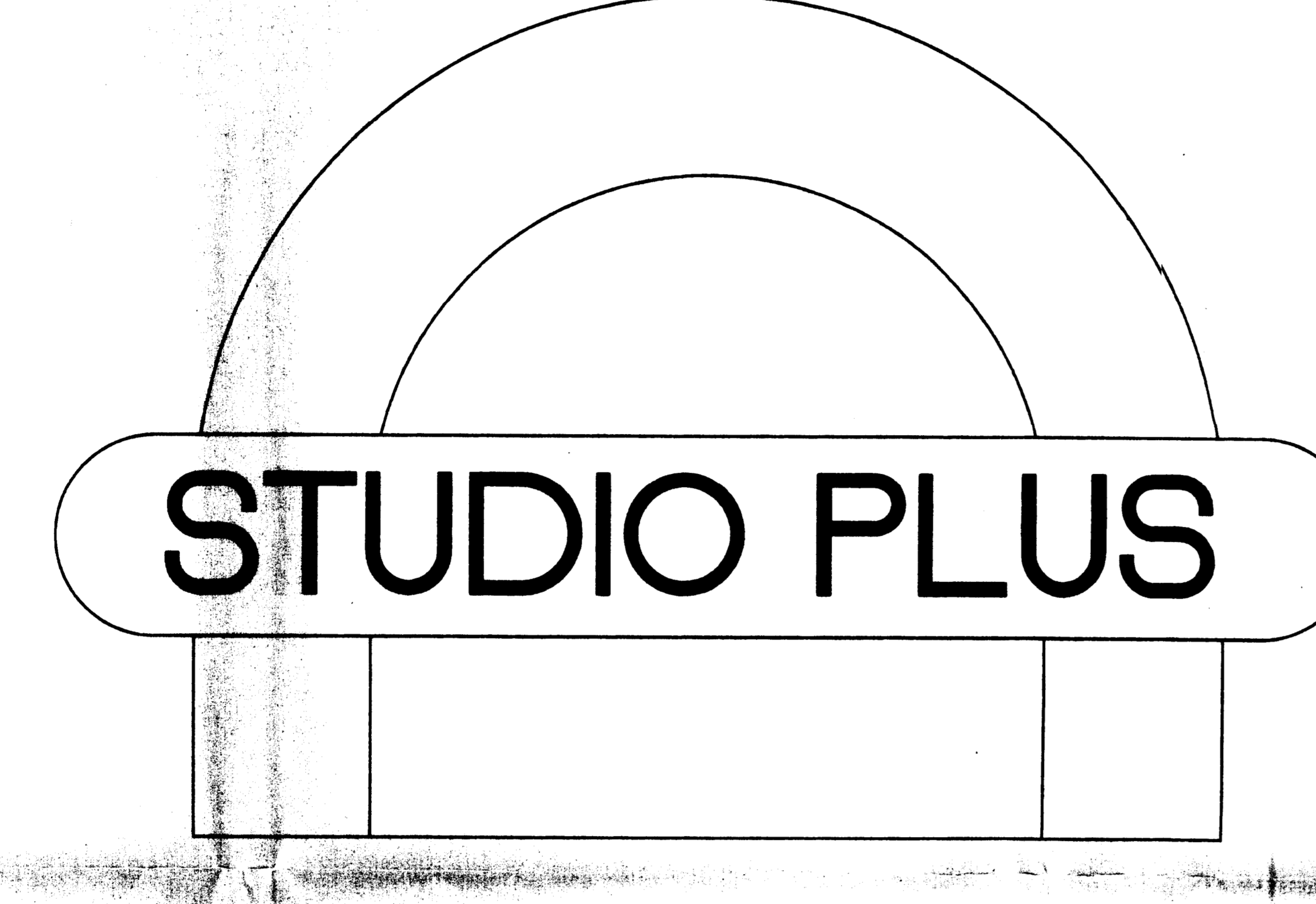


ATTACHED TO ADMINISTRATIVE
APPROVAL
DATED 03/31/85
BY MARTIN R. CRAMTON, JR.

PROJECT DATA, BUILDING DATA, and other technical specifications including owner, location, and construction details.

STUDIO PLUS at UNIVERSITY PLACE, INC. McCULLOUGH DRIVE CHARLOTTE, NORTH CAROLINA. Includes TRJ ARCHITECTS logo and project information.

OWNER/DEVELOPER: STUDIO PLUS-CORPORATE OFFICES, 1999 RICHMOND ROAD - SUITE 4, LEXINGTON, KENTUCKY 40502. CONSULTING ENGINEER: W. MILTON CONRAD, 13436 CLAYTON ROAD, ST. LOUIS, MISSOURI 63131. STRUCTURAL ENGINEER: IBRAHIM ENGINEERING CORP., 11500 OLIVE BLVD., ST. LOUIS, MISSOURI 63141.



STUDIO PLUS at UNIVERSITY PLACE
McCULLOUGH ROAD
CHARLOTTE, NORTH CAROLINA

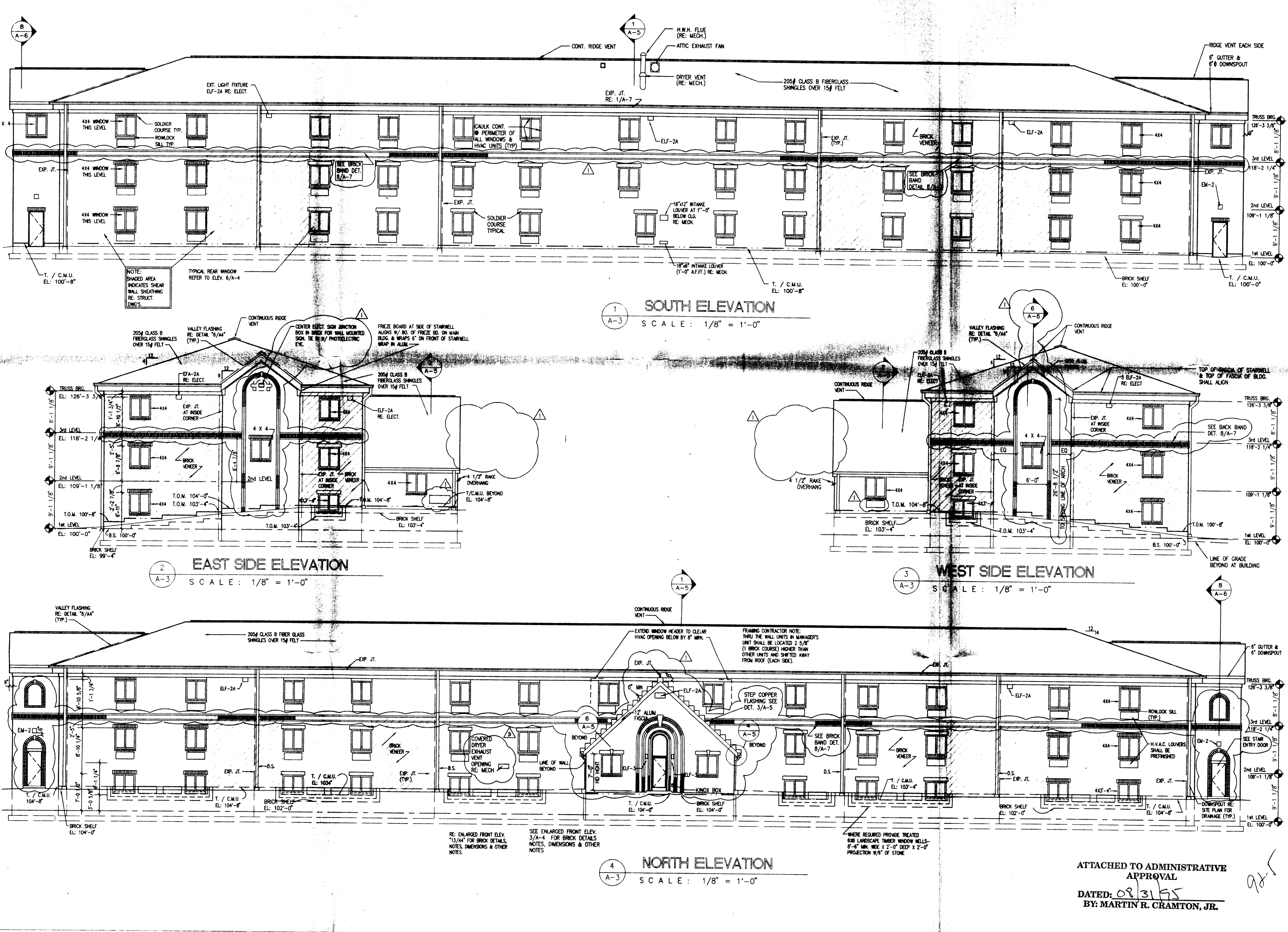


ATTACHED TO ADMINISTRATIVE
APPROVAL
DATED 03/31/85
BY MARTIN R. CRAMTON, JR.

OWNER/DEVELOPER: STUDIO PLUS-CORPORATE OFFICES, 1999 RICHMOND ROAD - SUITE 4, LEXINGTON, KENTUCKY 40502. CONSULTING ENGINEER: W. MILTON CONRAD, 13436 CLAYTON ROAD, ST. LOUIS, MISSOURI 63131. STRUCTURAL ENGINEER: IBRAHIM ENGINEERING CORP., 11500 OLIVE BLVD., ST. LOUIS, MISSOURI 63141. CODE DATA: 1988 STANDARD BUILDING CODE, TYPE VI UNPROTECTED, FULLY SPRINKLERED.

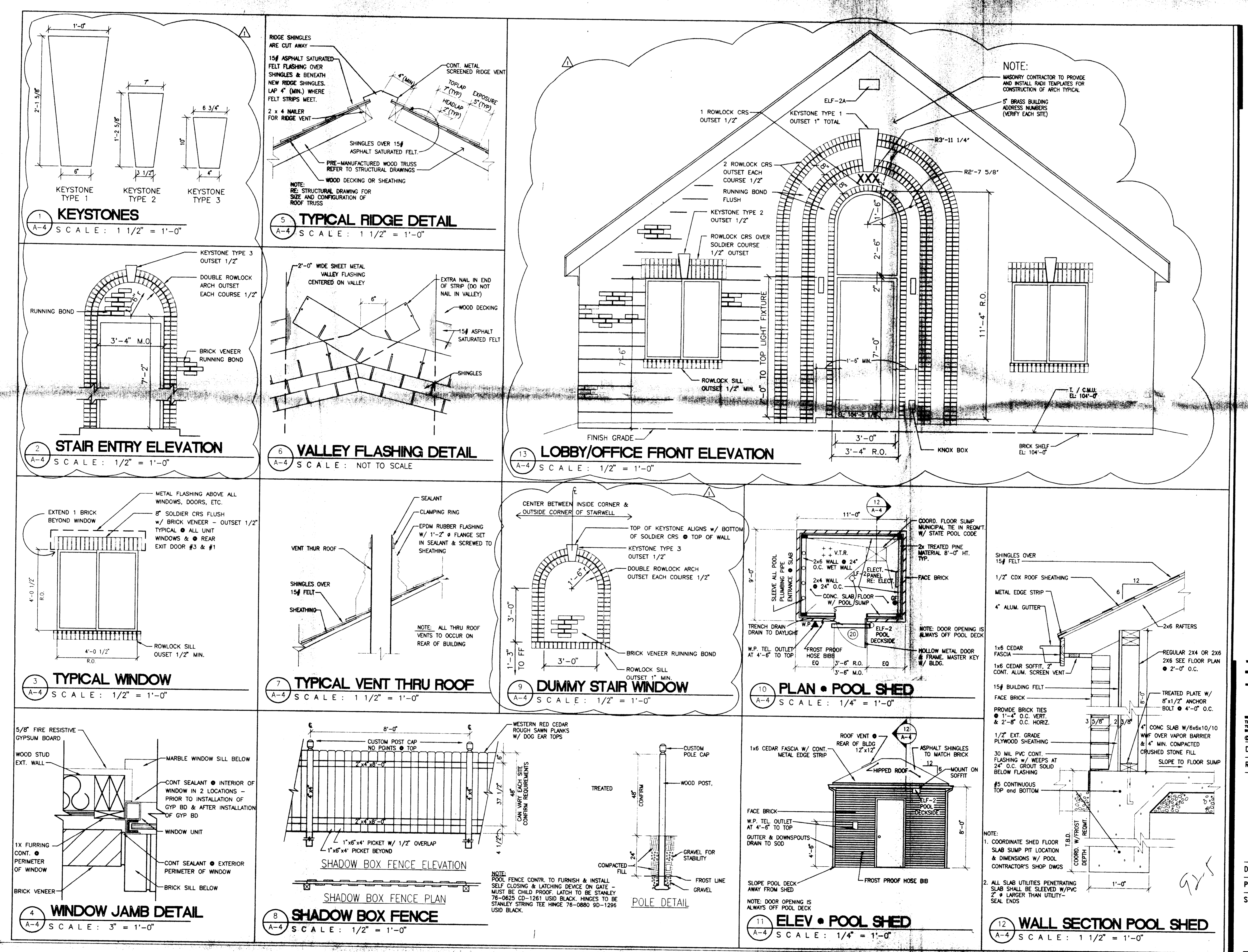
DRAWING INDEX table listing architectural, structural, mechanical, plumbing, fire protection, and electrical drawings.

STUDIO PLUS at UNIVERSITY PLACE, INC. McCULLOUGH DRIVE CHARLOTTE, NORTH CAROLINA. Includes TRJ ARCHITECTS logo and project information.

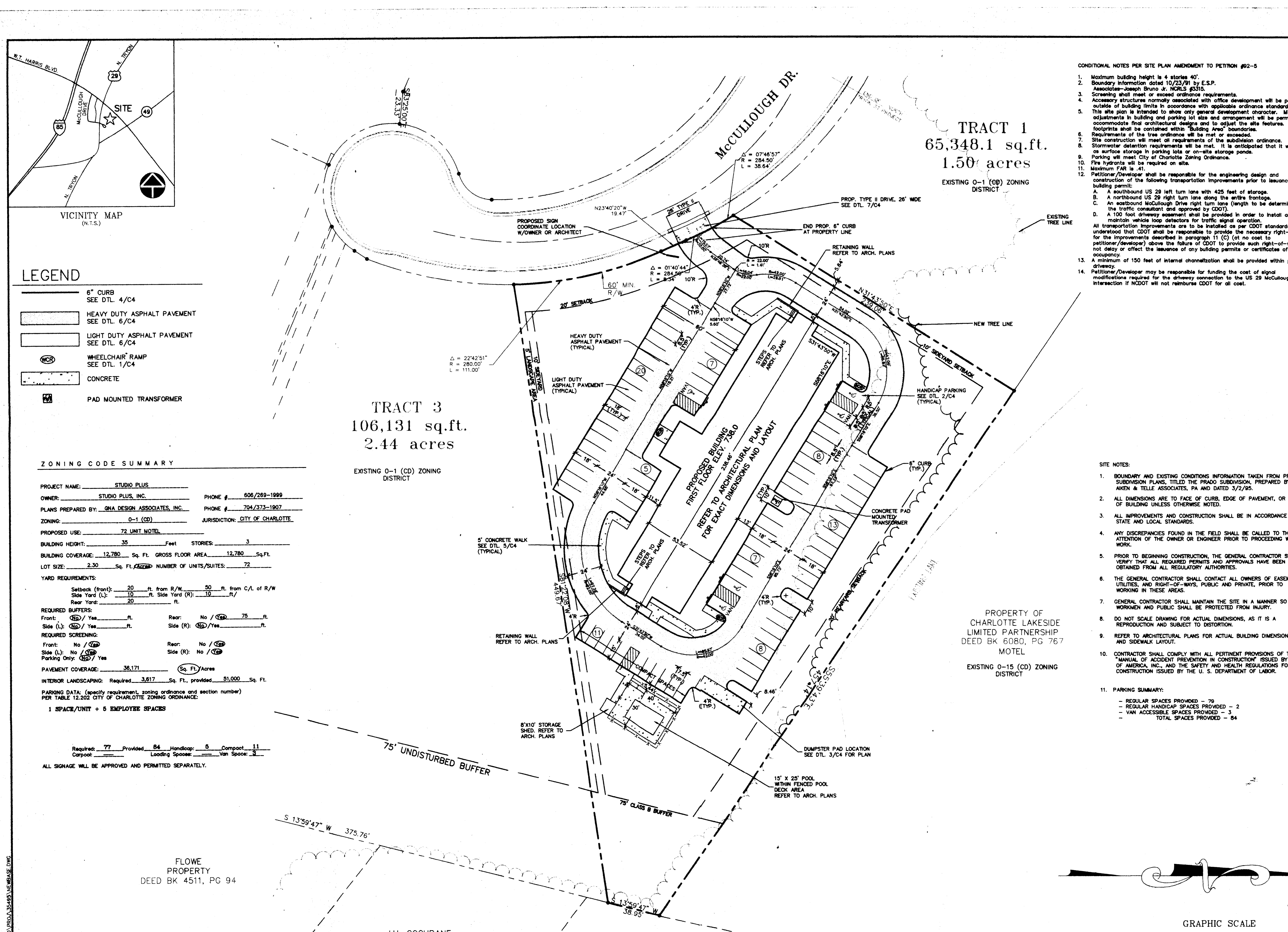


ATTACHED TO ADMINISTRATIVE
APPROVAL
DATED 03/31/85
BY MARTIN R. CRAMTON, JR.

STUDIO PLUS at UNIVERSITY PLACE, INC. McCULLOUGH DRIVE CHARLOTTE, NORTH CAROLINA. Includes TRJ ARCHITECTS logo and project information.



STUDIO PLUS at UNIVERSITY PLACE, INC. McCULLOUGH DRIVE CHARLOTTE, NORTH CAROLINA. Includes TRJ ARCHITECTS logo and project information.



STUDIO PLUS at UNIVERSITY PLACE, INC. McCULLOUGH DRIVE CHARLOTTE, NORTH CAROLINA. Includes TRJ ARCHITECTS logo and project information.