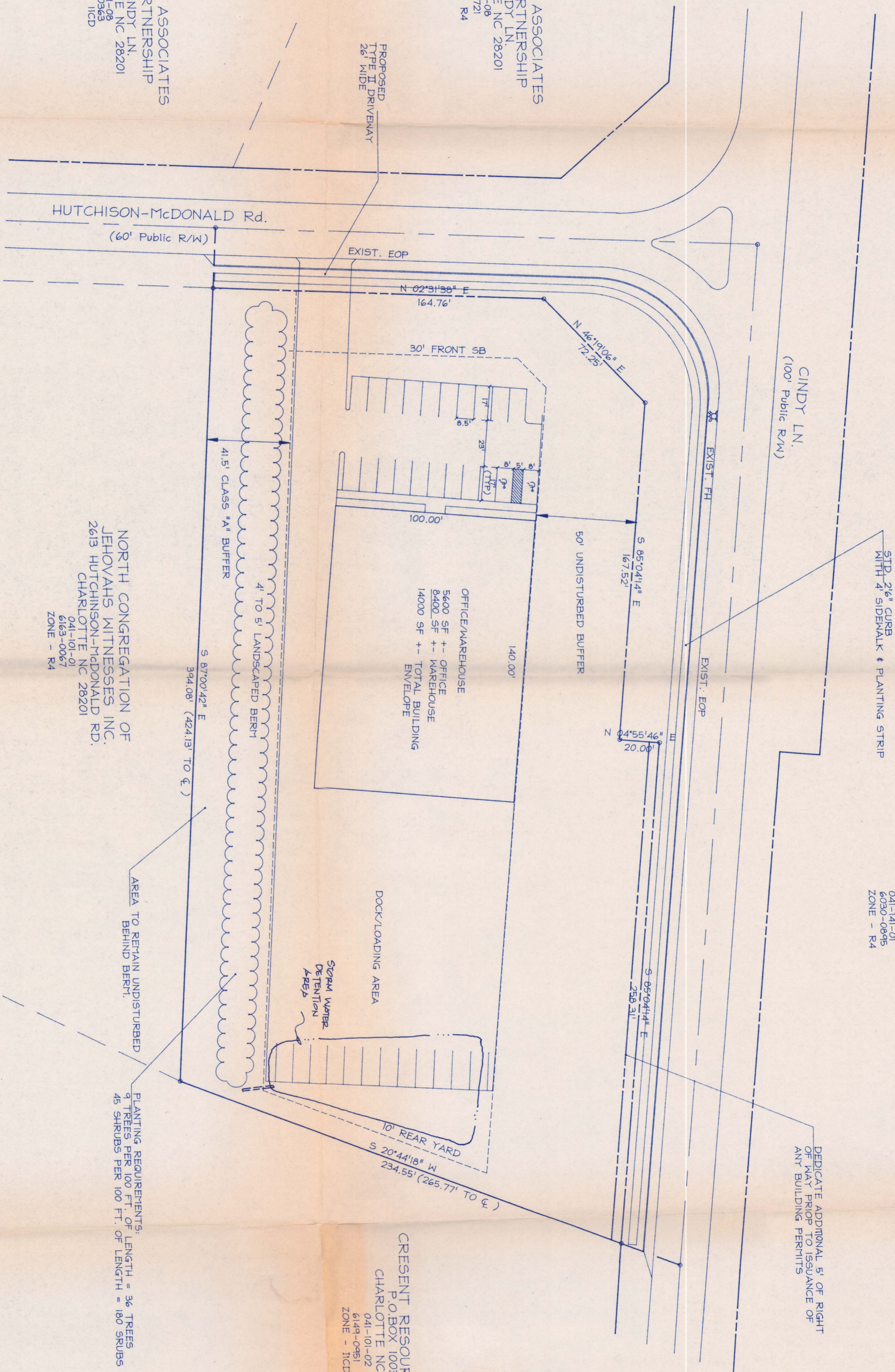




CINDY LANE ASSOCIATES
LIMITED PARTNERSHIP
2500 CINDY LN.
CHARLOTTE NC 28201
041-101-08
7610-0721
ZONE - R4

CINDY LANE ASSOCIATES
LIMITED PARTNERSHIP
2500 CINDY LN.
CHARLOTTE NC 28201
041-101-08
7610-0721
ZONE - R4



SITE DATA:

EXISTING ZONING : R-4
PROPOSED ZONING: 1-1(CD)
PROPOSED USE : OFFICE AND WAREHOUSE FACILITY
AREA: 2.16 ACRES (OUTSIDE OF RIGHT OF WAYS)

PARKING SUMMARY:

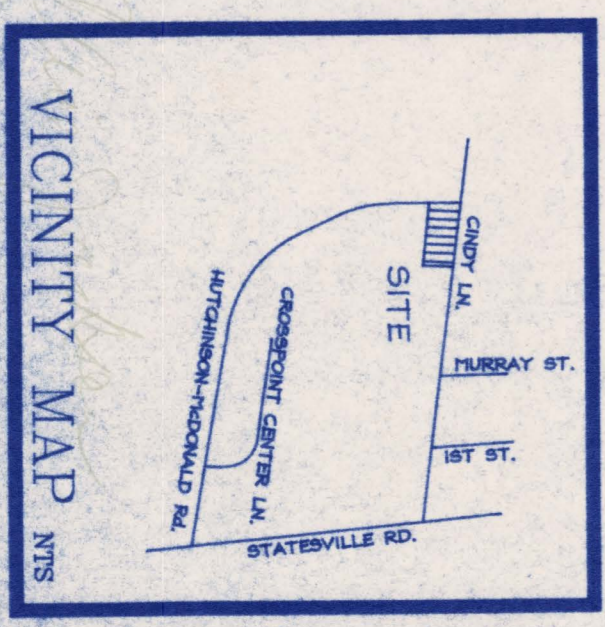
REQUIRED: OFFICE 1st/400 SF = 14 SPACES
WAREHOUSE 0.25 SP/1000 SF = 3 SPACES
TOTAL REQUIRED = 17 SPACES
PROVIDED: 34 SPACES (2 HANDICAP)

GENERAL NOTES

- All off-street parking and perimeter areas to be landscaped in accordance with the requirements of Chapter 21 of the Charlotte City Code, "Trees".
- A Class A buffer will be required along the southern property line as defined in the Charlotte Zoning Ordinance, Chapter 12, Part 3. A 25% reduction in the required width is proposed by construction of a 4' to 5' high landscaped berm.
- Parking will be provided as required in the Charlotte Zoning Ordinance, Chapter 12, Part 2.
- Signage will comply with the requirements of the Charlotte Zoning Ordinance, Chapter 13.
- Use of this site will be for office/warehouse and necessary parking and loading areas.
- No site lighting will exceed 30' in height.
- No detached signage along Cindy Lane.

NORTH CONGREGATION OF
JEHOVAH'S WITNESSES INC.
2613 HUTCHINSON-McDONALD RD.
CHARLOTTE NC 28201
041-101-01
6163-0067
ZONE - R4

APPROVED BY CITY COUNCIL
DATE June 19, 1995



<p>Sheet No. 1011</p>	<p>Scale: 1" = 30'</p>	<p>Dwg name: Hall2</p>	<p>Date: 2/26/95</p>	<p>Approved by: JMS</p>	<p>Drawn by: JMS</p>	<p>REVISIONS 4-14-95 REVISED AS PER CDOT AND PLANNING COMM. COMMENTS REVISED NOTE 4, ADDED 5-12-95 NOTE 6 & STORM WATER AREA</p>	<p>Rezoning Plan of The Hailey Property City of Charlotte, North Carolina</p>	<p>Civiltek Associates Engineering · Planning · Surveying 6608-C E. Harris Blvd. Charlotte, NC 28215 (704) 531-1943</p>
-----------------------	------------------------	------------------------	----------------------	-------------------------	----------------------	--	---	---