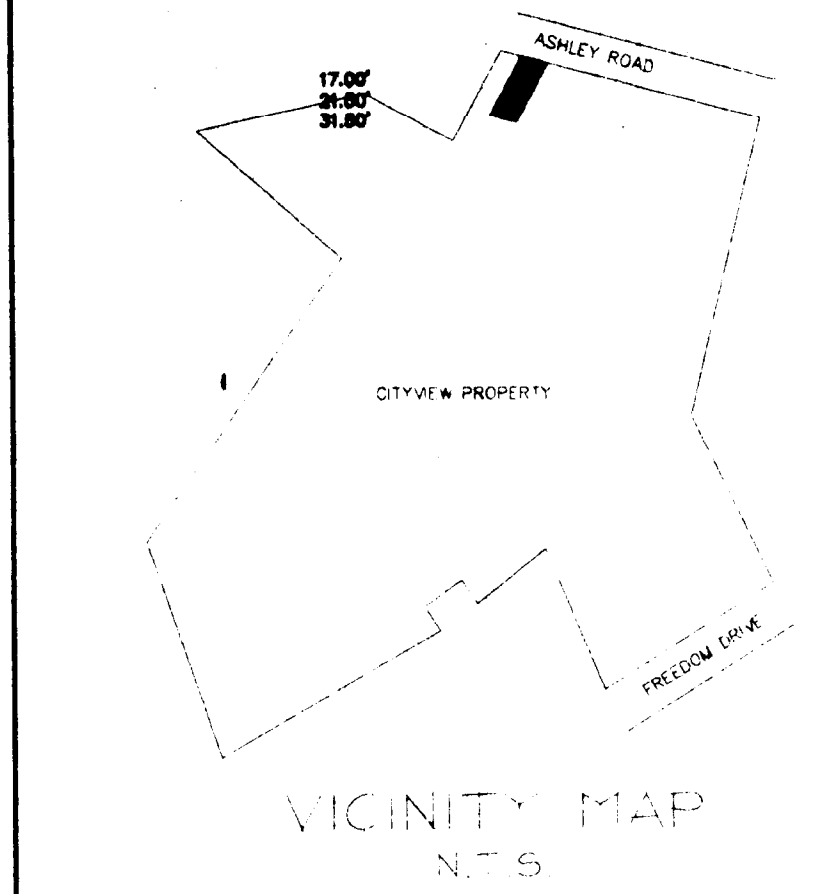
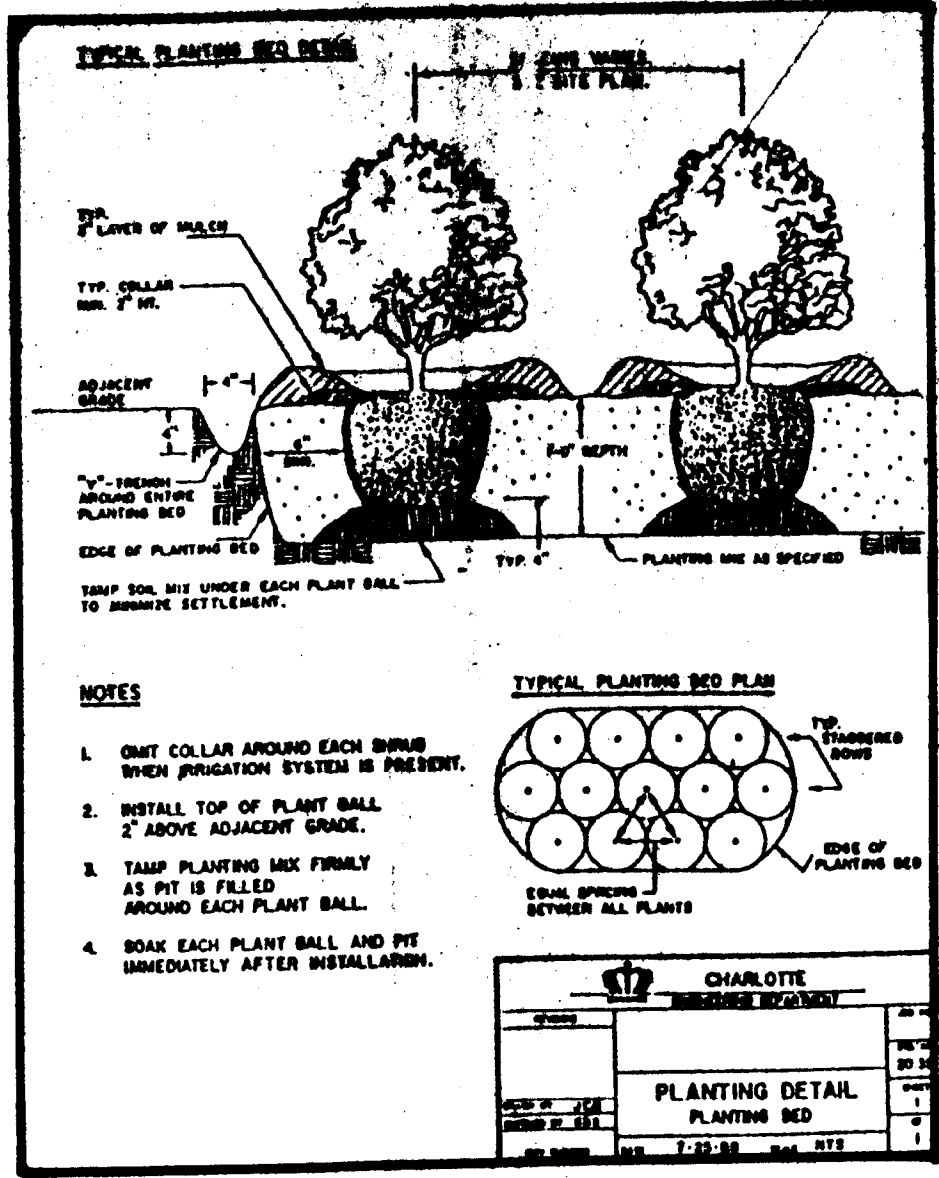


GENERAL UTILITY NOTES:

1. CONTRACTOR SHALL COORDINATE WITH THE PROPER UTILITY COMPANIES AND AGENCIES PRIOR TO COMMENCEMENT OF WORK.
2. ALL UTILITIES AND DATA SHALL BE OBTAINED BY THE CONTRACTOR PRIOR TO THE START OF CONSTRUCTION. IN CASE OF COMPLEX OR UNUSUAL UTILITIES, THE CONTRACTOR SHALL BE RESPONSIBLE TO OBTAIN NECESSARY DATA FROM THE CITY OF CHARLOTTE.
3. UTILITIES TO BE COORDINATED OR SHOWN, INCLUDING POWER, GAS, WATER, SEWER, RAIN, AND TELEPHONE, SHALL BE SHOWN AND LOCATED ON THE PLAN.
4. THE CONTRACTOR SHALL VERIFY THE LOCATION AND DEPTH OF ALL UTILITIES PRIOR TO CONSTRUCTION. ANY UNUSUAL UTILITIES SHALL BE REPORTED TO THE CITY OF CHARLOTTE IMMEDIATELY UPON DISCOVERY.
5. ANY CONSTRUCTION OPERATIONS NEAR OR OVER EXISTING UTILITIES SHALL BE APPROVED BY THE CITY OF CHARLOTTE. THE CONTRACTOR SHALL BE RESPONSIBLE FOR OBTAINING NECESSARY PERMITS AND APPROVALS FROM THE CITY OF CHARLOTTE PRIOR TO CONSTRUCTION.
6. THE CONTRACTOR SHALL MAINTAIN ACCESS TO ALL UTILITIES AT ALL TIMES. ANY DAMAGE TO UTILITIES SHALL BE REPAIRED IMMEDIATELY AT THE CONTRACTOR'S EXPENSE.
7. THE CONTRACTOR SHALL NOTIFY THE CITY OF CHARLOTTE IMMEDIATELY UPON DISCOVERY OF ANY UNUSUAL UTILITIES OR ANY OTHER UTILITIES NOT SHOWN ON THE PLAN.
8. THE CONTRACTOR SHALL MAINTAIN ACCESS TO ALL UTILITIES AT ALL TIMES. ANY DAMAGE TO UTILITIES SHALL BE REPAIRED IMMEDIATELY AT THE CONTRACTOR'S EXPENSE.
9. THE CONTRACTOR SHALL MAINTAIN ACCESS TO ALL UTILITIES AT ALL TIMES. ANY DAMAGE TO UTILITIES SHALL BE REPAIRED IMMEDIATELY AT THE CONTRACTOR'S EXPENSE.
10. THE CONTRACTOR SHALL MAINTAIN ACCESS TO ALL UTILITIES AT ALL TIMES. ANY DAMAGE TO UTILITIES SHALL BE REPAIRED IMMEDIATELY AT THE CONTRACTOR'S EXPENSE.
11. THE CONTRACTOR SHALL MAINTAIN ACCESS TO ALL UTILITIES AT ALL TIMES. ANY DAMAGE TO UTILITIES SHALL BE REPAIRED IMMEDIATELY AT THE CONTRACTOR'S EXPENSE.
12. THE CONTRACTOR SHALL MAINTAIN ACCESS TO ALL UTILITIES AT ALL TIMES. ANY DAMAGE TO UTILITIES SHALL BE REPAIRED IMMEDIATELY AT THE CONTRACTOR'S EXPENSE.
13. THE CONTRACTOR SHALL MAINTAIN ACCESS TO ALL UTILITIES AT ALL TIMES. ANY DAMAGE TO UTILITIES SHALL BE REPAIRED IMMEDIATELY AT THE CONTRACTOR'S EXPENSE.
14. THE CONTRACTOR SHALL MAINTAIN ACCESS TO ALL UTILITIES AT ALL TIMES. ANY DAMAGE TO UTILITIES SHALL BE REPAIRED IMMEDIATELY AT THE CONTRACTOR'S EXPENSE.
15. THE CONTRACTOR SHALL MAINTAIN ACCESS TO ALL UTILITIES AT ALL TIMES. ANY DAMAGE TO UTILITIES SHALL BE REPAIRED IMMEDIATELY AT THE CONTRACTOR'S EXPENSE.
16. THE CONTRACTOR SHALL MAINTAIN ACCESS TO ALL UTILITIES AT ALL TIMES. ANY DAMAGE TO UTILITIES SHALL BE REPAIRED IMMEDIATELY AT THE CONTRACTOR'S EXPENSE.
17. THE CONTRACTOR SHALL MAINTAIN ACCESS TO ALL UTILITIES AT ALL TIMES. ANY DAMAGE TO UTILITIES SHALL BE REPAIRED IMMEDIATELY AT THE CONTRACTOR'S EXPENSE.

PLANTING NOTES:

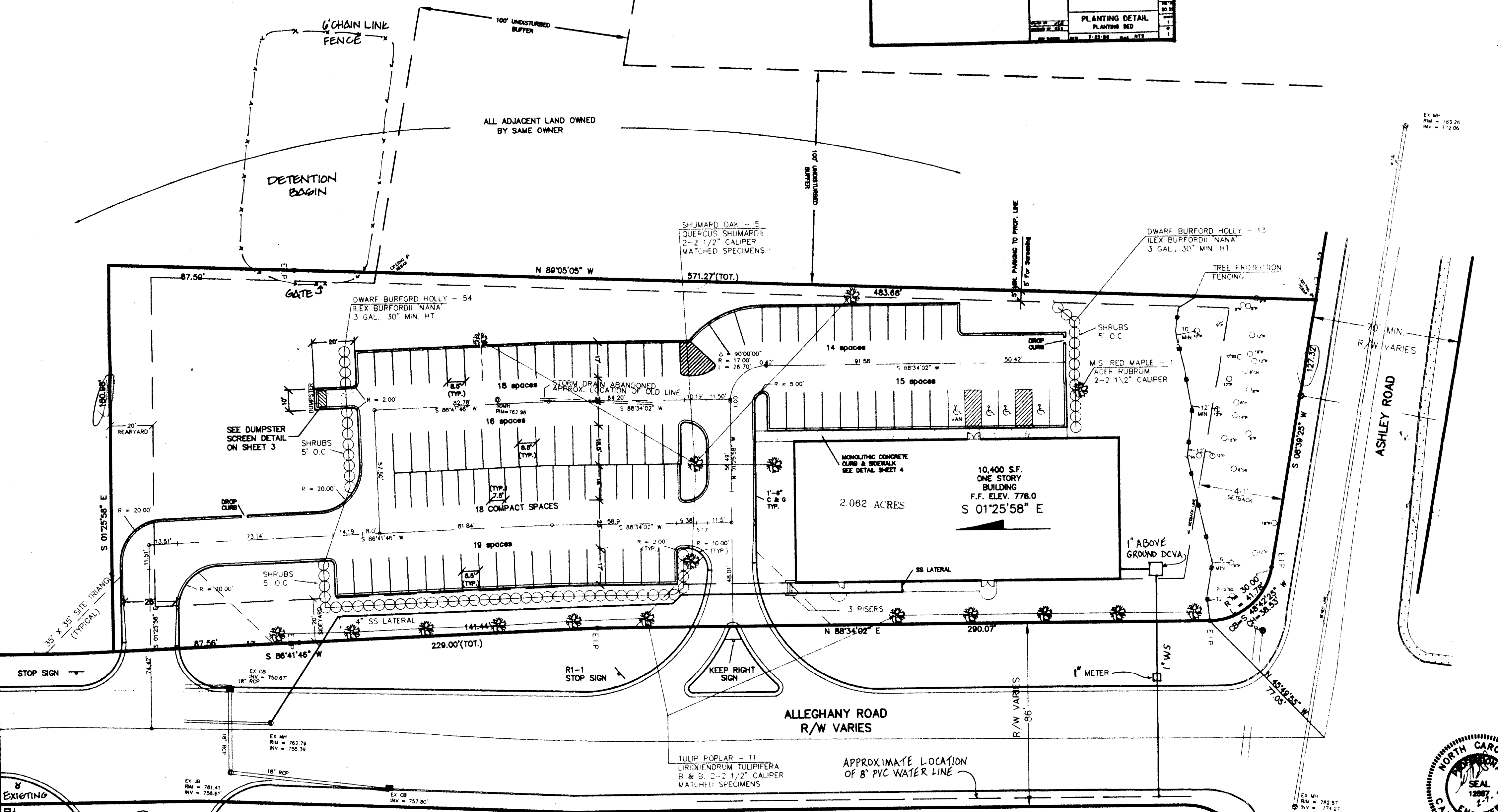
- ALL PLANTS SHALL MEET OR EXCEED THE MINIMUM STANDARDS SET FORTH IN THE AMERICAN STANDARDS FOR NURSERY STOCK BY THE AMERICAN ASSOCIATION OF NURSERYMEN, INC., WASHINGTON, D.C.
- ALL PLANTS SHALL BE COMPACT, UNIFORM, AND WELL BROWN. PLANTS SHALL NOT BE LOOSE, OPEN PLANTS. THE CLIENT'S LANDSCAPE ARCHITECT RESERVES THE RIGHT, IN HER SOLE OPINION, TO REJECT ANY AND ALL MATERIALS WHICH DO NOT MEET THESE REQUIREMENTS.
- ALL PLANTING BEDS SHALL BE MAINTAINED AT A MINIMUM OF 4" WITH PINE NEEDLE MULCH.
- ALL PLANTS SHALL BE FREE FROM DISEASE, INSECT INFESTATIONS, AND INJURIES.
- ALL PLANT BEDS SHALL HAVE A 4" V-CUT TRENCH INSTALLED AT THE PERIMETER OF THE BED.
- CONTRACTOR MUST PROVIDE A ONE YEAR WRITTEN GUARANTEE FOR ALL PLANT MATERIALS FROM THE DATE OF FINAL ACCEPTANCE BY THE LANDSCAPE ARCHITECT.
- THE SPECIES, VARIETIES, AND SIZE LISTED SHALL BE PROVIDED AS SPECIFIED. SUBSTITUTIONS WILL BE PERMITTED ONLY UPON WRITTEN APPLICATION BY THE CONTRACTOR TO THE LANDSCAPE ARCHITECT, AND UPON APPROVAL BY SAID LANDSCAPE ARCHITECT IN WRITING.
- SYMBOLS: B.S. = BALLED AND BURLAPPED, O.C. = ON CENTER, GAL. = GALLON CONTAINER, M.S. = MULTI-STEM HT. = HEIGHT, CAL. = CALIPER.
- THE LANDSCAPE CONTRACTOR IS RESPONSIBLE FOR PROVIDING ALL PLANTS ILLUSTRATED ON THE PLANTING PLAN, IF ANY DISCREPANCIES EXIST BETWEEN THE QUANTITIES LISTED ON THE PLANT LIST AND THE QUANTITIES SHOWN ON THE PLAN, THE CONTRACTOR SHALL PROVIDE ALL QUANTITIES ILLUSTRATED ON THE PLAN. IF ANY PLANTS ARE SHOWN NOT LABELED, THE CONTRACTOR SHALL NOTIFY THE LANDSCAPE ARCHITECT AND THESE PLANTINGS SHALL BE INCLUDED IN THE CONTRACTOR'S INITIAL BID.
- SOIL AMENDMENTS SHALL BE UNIFORMLY SPREAD AND CULTIVATED THOROUGHLY BY A MECHANICAL TILLER INTO THE TOP 12" OF SOIL THROUGHOUT SHRUB BEDS.
- THE LANDSCAPE CONTRACTOR SHALL NOTIFY THE LANDSCAPE ARCHITECT AND THE OWNER IN WRITING OF ALL SOIL CONDITIONS THE CONTRACTOR CONSIDERS DETRIMENTAL TO THE GROWTH OF PLANT MATERIALS. PROPER DRAINAGE MUST BE ASSURED.



THIS DRAWING IS THE PROPERTY OF BURTON ENGINEERING ASSOCIATES AND IS NOT TO BE REPRODUCED OR COPIED IN WHOLE OR IN PART. IT IS NOT TO BE USED ON ANY OTHER PROJECT AND IS TO BE RETURNED UPON REQUEST.

GENERAL NOTES:

1. TOPOGRAPHIC AND BOUNDARY SURVEY DATA PROVIDED BY: BOB ALLEN & ASSOCIATES P.A., 825 BRADLEY AVENUE, ROCKFORD, NC 28153.
2. OWNER/DEVELOPER: CPCC WEST CENTER, 2115 REXFORD RD., CHARLOTTE, NC 28211.
3. ARCHITECT: BURTON ENGINEERING ASSOCIATES, 1000 W. 5TH ST., CHARLOTTE, NC 28203.
4. LANDSCAPE ARCHITECT: BURTON ENGINEERING ASSOCIATES, 1000 W. 5TH ST., CHARLOTTE, NC 28203.
5. PLANNING PROFESSIONAL: BURTON ENGINEERING ASSOCIATES, 1000 W. 5TH ST., CHARLOTTE, NC 28203.
6. ALL CONCRETE SHALL BE FULLY CURED 48 HOURS PRIOR TO FINISH.
7. ALL CONCRETE SHALL BE FULLY CURED 48 HOURS PRIOR TO FINISH.
8. ALL CONCRETE SHALL BE FULLY CURED 48 HOURS PRIOR TO FINISH.
9. ALL CONCRETE SHALL BE FULLY CURED 48 HOURS PRIOR TO FINISH.
10. ALL CONCRETE SHALL BE FULLY CURED 48 HOURS PRIOR TO FINISH.
11. ALL CONCRETE SHALL BE FULLY CURED 48 HOURS PRIOR TO FINISH.
12. ALL CONCRETE SHALL BE FULLY CURED 48 HOURS PRIOR TO FINISH.
13. ALL CONCRETE SHALL BE FULLY CURED 48 HOURS PRIOR TO FINISH.
14. ALL CONCRETE SHALL BE FULLY CURED 48 HOURS PRIOR TO FINISH.
15. ALL CONCRETE SHALL BE FULLY CURED 48 HOURS PRIOR TO FINISH.
16. ALL CONCRETE SHALL BE FULLY CURED 48 HOURS PRIOR TO FINISH.
17. ALL CONCRETE SHALL BE FULLY CURED 48 HOURS PRIOR TO FINISH.
18. ALL CONCRETE SHALL BE FULLY CURED 48 HOURS PRIOR TO FINISH.
19. ALL CONCRETE SHALL BE FULLY CURED 48 HOURS PRIOR TO FINISH.
20. ALL CONCRETE SHALL BE FULLY CURED 48 HOURS PRIOR TO FINISH.



STD. CHARLOTTE - MECKLENBURG LAND DEVELOPMENT DETAILS

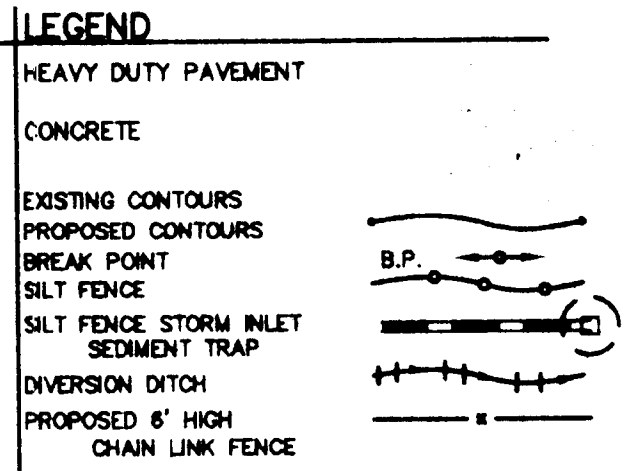
- | | |
|-------|--|
| 10.07 | CLUB & CUTTER |
| 10.08 | MONOLITHIC CONCRETE CURB & SIDEWALK |
| 10.09 | TYPE II DRIVE ENTRANCE |
| 10.10 | ACCESSIBLE RAMP STANDARD MONOLITHIC CURB & SIDEWALK |
| 10.11 | CLUB TRANSITION - 2" CURB & CUTTER TO TYP. CURB & CUTTER |
| 40.02 | PLANTING DETAIL - SINGLE STEM TREE (SEE CA) |
| 40.04 | TREE PROTECTION DETAIL (SEE CA) |
| 40.09 | DETAIL FOR TREE PLANTING ISLAND |
| 40.11 | TREE PLANTING NOTES |
| 50.03 | ACCESSIBLE PARKING & SIGNAGE STANDARDS |

TREE NOTES:

1. PLACE BARRIERS TO PREVENT THE APPROACH OF EQUIPMENT WITHIN THE DRIP LINE OF TREES TO BE RETAINED. BARRIERS SHOULD BE INSTALLED AT THE DRIP LINE OF TREES.
2. DO NOT NAIL BOARDS TO TREES DURING BUILDING OPERATIONS.
3. DO NOT CUT TREE ROOTS INSIDE THE TREE DRIP LINE.
4. DO NOT PLACE EQUIPMENT, CONSTRUCTION MATERIALS, TOPSOIL, OR FILL DIRT WITHIN THE DRIP LINE OF THE TREE TO BE SAVED.
5. IF A TREE MARKED FOR PRESERVATION IS DAMAGED, REMOVE IT AND REPLACE IT WITH A TREE OF THE SAME OR SIMILAR SPECIES, 2-3" CALIPER OR LARGER, PRUNED BALLED AND BURLAPPED NURSERY STOCK WHEN ACTIVITY IN THE AREA IS COMPLETE.
6. DURING FINAL STAGE CLEANUP, REMOVE BARRIERS AROUND TREES.

SITE TABULATION

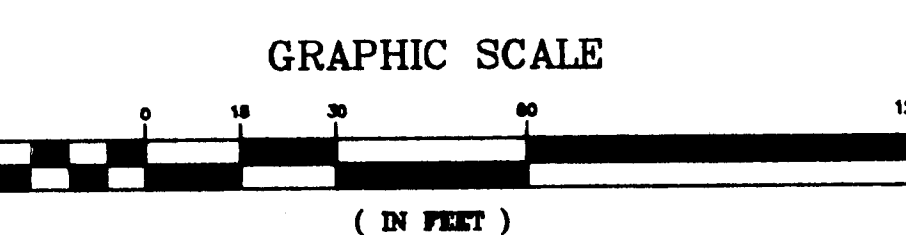
ZONING:	INST.-CO
ACREAGE:	2.062 ACRES
PARKING:	
NO. STUDENTS:	104
REQUIRED:	52
PROPOSED:	100 (4 HC)
COMPACT SPACES:	19
BUILDING AREA:	10,400 S.F.
SIDE SETBACK:	20'
FRONT SETBACK:	40'
STREET FRONTAGE (ALL):	500'±
TREES REQUIRED:	12
IMPERVIOUS AREA:	1.09 ACRES
INTERNAL TREES REQ'D:	4



APPROVED BY CITY COUNCIL
DATE March 18, 1996

SCHEDULE OF DRAWINGS

- 1 STAKING, UTILITY, AND LANDSCAPE PLAN
- 2 GRADING, DRAINAGE, EROSION CONTROL, & DETENTION PLAN
- 3 DETAILS
- 4 DETAILS



CPCC WEST CENTER
CHARLOTTE, NC

Project Title
Sheet Title

CTB
Engineer
PR/SC/MLM
Drawn By
2-9-96
Date

Revisions

Project Number
72-001

Sheet of
C1 4

2115 Rexford Rd., Suite 540, Charlotte, NC 28211
(704) 365-8883 • Fax (704) 365-4506

BURTON ENGINEERING ASSOCIATES
CIVIL ENGINEERS
LAND PLANNERS