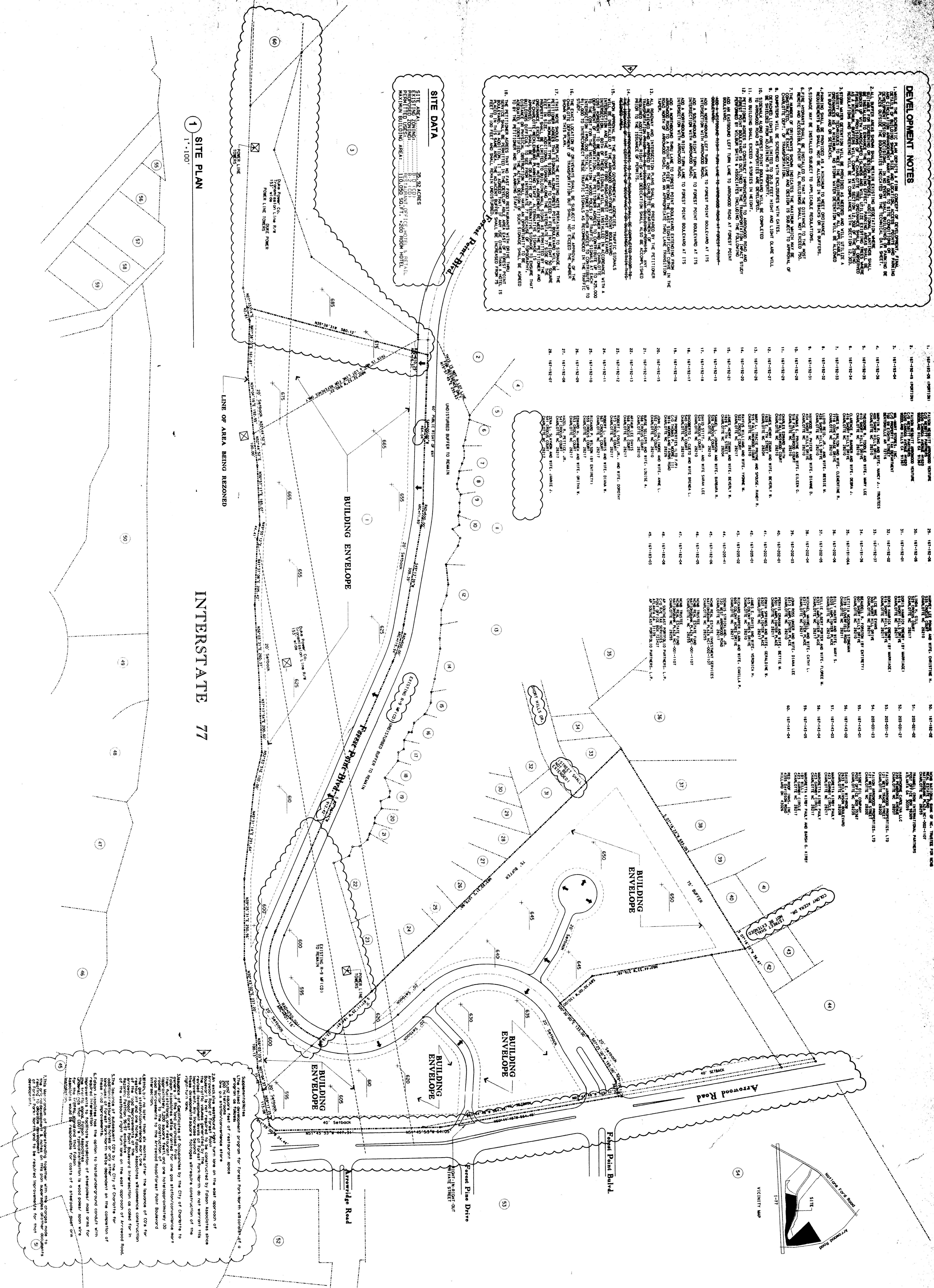


DEVELOPMENT NOTES

1. THE DEVELOPER SHALL OBTAIN ALL NECESSARY PERMITS FROM THE CITY OF CHARLOTTE AND THE STATE OF NORTH CAROLINA.
2. ALL UTILITIES SHALL BE DEEPENED AND RELOCATED AS SHOWN ON THE ATTACHED UTILITY PLAN.
3. THE DEVELOPER SHALL MAINTAIN EXISTING VEGETATION AND TREES TO REMAIN ON THE SITE.
4. THE DEVELOPER SHALL MAINTAIN EXISTING VEGETATION AND TREES TO REMAIN ON THE SITE.
5. THE DEVELOPER SHALL MAINTAIN EXISTING VEGETATION AND TREES TO REMAIN ON THE SITE.
6. THE DEVELOPER SHALL MAINTAIN EXISTING VEGETATION AND TREES TO REMAIN ON THE SITE.
7. THE DEVELOPER SHALL MAINTAIN EXISTING VEGETATION AND TREES TO REMAIN ON THE SITE.
8. THE DEVELOPER SHALL MAINTAIN EXISTING VEGETATION AND TREES TO REMAIN ON THE SITE.
9. THE DEVELOPER SHALL MAINTAIN EXISTING VEGETATION AND TREES TO REMAIN ON THE SITE.
10. THE DEVELOPER SHALL MAINTAIN EXISTING VEGETATION AND TREES TO REMAIN ON THE SITE.
11. THE DEVELOPER SHALL MAINTAIN EXISTING VEGETATION AND TREES TO REMAIN ON THE SITE.
12. THE DEVELOPER SHALL MAINTAIN EXISTING VEGETATION AND TREES TO REMAIN ON THE SITE.
13. THE DEVELOPER SHALL MAINTAIN EXISTING VEGETATION AND TREES TO REMAIN ON THE SITE.
14. THE DEVELOPER SHALL MAINTAIN EXISTING VEGETATION AND TREES TO REMAIN ON THE SITE.
15. THE DEVELOPER SHALL MAINTAIN EXISTING VEGETATION AND TREES TO REMAIN ON THE SITE.
16. THE DEVELOPER SHALL MAINTAIN EXISTING VEGETATION AND TREES TO REMAIN ON THE SITE.
17. THE DEVELOPER SHALL MAINTAIN EXISTING VEGETATION AND TREES TO REMAIN ON THE SITE.
18. THE DEVELOPER SHALL MAINTAIN EXISTING VEGETATION AND TREES TO REMAIN ON THE SITE.

SITE DATA
 3.32 ACRES
 100,000 SQ. FT. (2.3 ACRES)
 100,000 SQ. FT. (2.3 ACRES)
 100,000 SQ. FT. (2.3 ACRES)
 100,000 SQ. FT. (2.3 ACRES)

SITE PLAN
 1" = 100'



- | | | | |
|----------------|------------|------------|------------|
| 1. 16-1-18-01 | 16-1-18-01 | 16-1-18-01 | 16-1-18-01 |
| 2. 16-1-18-02 | 16-1-18-02 | 16-1-18-02 | 16-1-18-02 |
| 3. 16-1-18-03 | 16-1-18-03 | 16-1-18-03 | 16-1-18-03 |
| 4. 16-1-18-04 | 16-1-18-04 | 16-1-18-04 | 16-1-18-04 |
| 5. 16-1-18-05 | 16-1-18-05 | 16-1-18-05 | 16-1-18-05 |
| 6. 16-1-18-06 | 16-1-18-06 | 16-1-18-06 | 16-1-18-06 |
| 7. 16-1-18-07 | 16-1-18-07 | 16-1-18-07 | 16-1-18-07 |
| 8. 16-1-18-08 | 16-1-18-08 | 16-1-18-08 | 16-1-18-08 |
| 9. 16-1-18-09 | 16-1-18-09 | 16-1-18-09 | 16-1-18-09 |
| 10. 16-1-18-10 | 16-1-18-10 | 16-1-18-10 | 16-1-18-10 |
| 11. 16-1-18-11 | 16-1-18-11 | 16-1-18-11 | 16-1-18-11 |
| 12. 16-1-18-12 | 16-1-18-12 | 16-1-18-12 | 16-1-18-12 |
| 13. 16-1-18-13 | 16-1-18-13 | 16-1-18-13 | 16-1-18-13 |
| 14. 16-1-18-14 | 16-1-18-14 | 16-1-18-14 | 16-1-18-14 |
| 15. 16-1-18-15 | 16-1-18-15 | 16-1-18-15 | 16-1-18-15 |
| 16. 16-1-18-16 | 16-1-18-16 | 16-1-18-16 | 16-1-18-16 |
| 17. 16-1-18-17 | 16-1-18-17 | 16-1-18-17 | 16-1-18-17 |
| 18. 16-1-18-18 | 16-1-18-18 | 16-1-18-18 | 16-1-18-18 |
| 19. 16-1-18-19 | 16-1-18-19 | 16-1-18-19 | 16-1-18-19 |
| 20. 16-1-18-20 | 16-1-18-20 | 16-1-18-20 | 16-1-18-20 |
| 21. 16-1-18-21 | 16-1-18-21 | 16-1-18-21 | 16-1-18-21 |
| 22. 16-1-18-22 | 16-1-18-22 | 16-1-18-22 | 16-1-18-22 |
| 23. 16-1-18-23 | 16-1-18-23 | 16-1-18-23 | 16-1-18-23 |
| 24. 16-1-18-24 | 16-1-18-24 | 16-1-18-24 | 16-1-18-24 |
| 25. 16-1-18-25 | 16-1-18-25 | 16-1-18-25 | 16-1-18-25 |
| 26. 16-1-18-26 | 16-1-18-26 | 16-1-18-26 | 16-1-18-26 |
| 27. 16-1-18-27 | 16-1-18-27 | 16-1-18-27 | 16-1-18-27 |
| 28. 16-1-18-28 | 16-1-18-28 | 16-1-18-28 | 16-1-18-28 |
| 29. 16-1-18-29 | 16-1-18-29 | 16-1-18-29 | 16-1-18-29 |
| 30. 16-1-18-30 | 16-1-18-30 | 16-1-18-30 | 16-1-18-30 |
| 31. 16-1-18-31 | 16-1-18-31 | 16-1-18-31 | 16-1-18-31 |
| 32. 16-1-18-32 | 16-1-18-32 | 16-1-18-32 | 16-1-18-32 |
| 33. 16-1-18-33 | 16-1-18-33 | 16-1-18-33 | 16-1-18-33 |
| 34. 16-1-18-34 | 16-1-18-34 | 16-1-18-34 | 16-1-18-34 |
| 35. 16-1-18-35 | 16-1-18-35 | 16-1-18-35 | 16-1-18-35 |
| 36. 16-1-18-36 | 16-1-18-36 | 16-1-18-36 | 16-1-18-36 |
| 37. 16-1-18-37 | 16-1-18-37 | 16-1-18-37 | 16-1-18-37 |
| 38. 16-1-18-38 | 16-1-18-38 | 16-1-18-38 | 16-1-18-38 |
| 39. 16-1-18-39 | 16-1-18-39 | 16-1-18-39 | 16-1-18-39 |
| 40. 16-1-18-40 | 16-1-18-40 | 16-1-18-40 | 16-1-18-40 |

INTERSTATE 77

TECHNICAL DATA SHEET

Sheet Title: FOREST PARK FOREST REZONING

Client: FALSON

Scale: 1" = 100'

Project Number: 960102

Sheet Number: 96-97

Date: NOVEMBER 12, 1996

CAJ Date: 6-SEP-96

CAJ File: ICP

Revision: NOVEMBER 12, 1996

Revision No.: 96-97

AS FOR PUBLIC HEARING

ATTACHED TO ADMINISTRATIVE APPROVAL

DATE: 11/12/96

BY: MACKAY, R. CALVERTON, JR.

TRB Architects

112 South Tryon
 Durham
 Charlotte, NC
 770-6695 office
 333-3395 fax

Revision Dates:
 NOVEMBER 12, 1996 REVISIONS
 JANUARY 31, 1997 REVISIONS
 MAY 8, 1998 REVISIONS
 JUNE 22, 1998 REVISIONS

CHARLOTTE-MECKLENBURG PLANNING COMMISSION INTER-OFFICE COMMUNICATION

TO: Robert Brandon
 Zoning Administrator

FROM: Martin R. Graham, Jr.
 Planning Director

DATE: July 7, 1998

SUBJECT: Administrative Approval for Falson No. 96-97 Falson Arrowood Property, Inc. The attached is a copy of the revised plan for the above mentioned rezoning petition. The plan has been revised to allow phasing of the development and to include a transportation impact study. Since this change is minor, I am administratively approving the revised plan. Please use this revised plan when evaluating requests for building permits and certificates of occupancy.

Copyright 1996 TRB Architects