

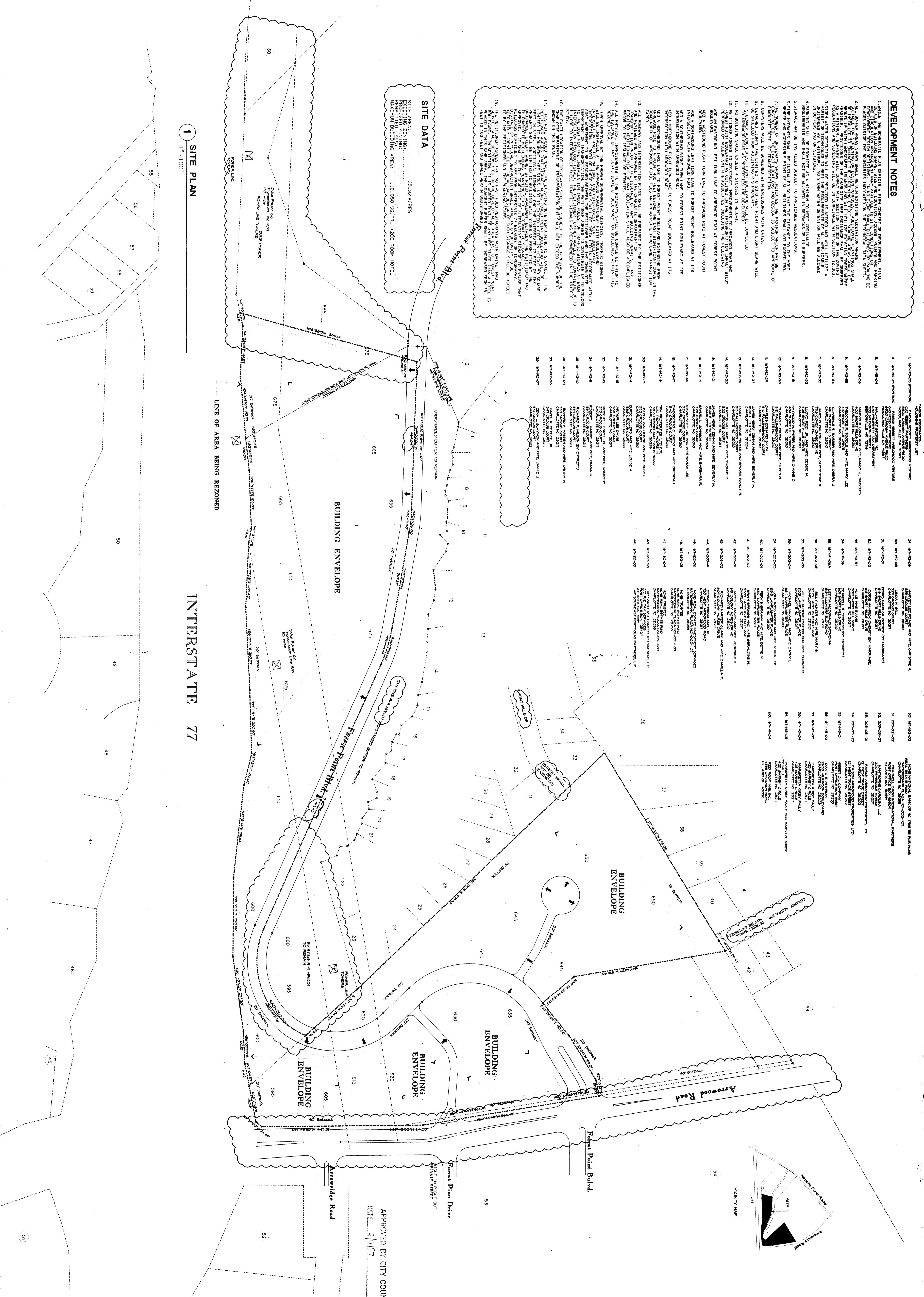
DEVELOPMENT NOTES

1. WHILE THE SCHEMATIC PLAN SERVES AS A FIRM CONCEPT OF DEVELOPMENT, FINAL DESIGN AND CONSTRUCTION SHALL BE SUBJECT TO THE CITY ENGINEER'S REVIEW AND APPROVAL. ALL BUILDINGS SHALL BE INSTALLED IN ACCORDANCE WITH THE CITY ENGINEER'S REQUIREMENTS AND SHALL BE CONSTRUCTED IN ACCORDANCE WITH THE CITY ENGINEER'S REQUIREMENTS. ALL BUILDINGS SHALL BE CONSTRUCTED IN ACCORDANCE WITH THE CITY ENGINEER'S REQUIREMENTS.
2. ALL BUFFER AREAS SHALL REMAIN EXISTING VEGETATION UNLESS SHOWN OTHERWISE. BUFFER AREAS SHALL BE MAINTAINED AND NOT BE REMOVED OR ALTERED. BUFFER AREAS SHALL BE MAINTAINED AND NOT BE REMOVED OR ALTERED.
3. SIGNAGE SHALL BE PROVIDED AS NECESSARY AND SHALL BE INSTALLED IN ACCORDANCE WITH THE CITY ENGINEER'S REQUIREMENTS. SIGNAGE SHALL BE INSTALLED IN ACCORDANCE WITH THE CITY ENGINEER'S REQUIREMENTS.
4. SIGNAGE SHALL BE INSTALLED SUBJECT TO APPLICABLE REGULATIONS. SIGNAGE SHALL BE INSTALLED SUBJECT TO APPLICABLE REGULATIONS.
5. FIRE ALARMS SHALL BE INSTALLED SO THAT THE DISTANCE TO THE NEAREST FIRE ALARM STATION DOES NOT EXCEED 750 FEET. FIRE ALARMS SHALL BE INSTALLED SO THAT THE DISTANCE TO THE NEAREST FIRE ALARM STATION DOES NOT EXCEED 750 FEET.
6. THE DISTANCE TO THE NEAREST FIRE ALARM STATION SHALL NOT EXCEED 750 FEET. THE DISTANCE TO THE NEAREST FIRE ALARM STATION SHALL NOT EXCEED 750 FEET.
7. THE DISTANCE TO THE NEAREST FIRE ALARM STATION SHALL NOT EXCEED 750 FEET. THE DISTANCE TO THE NEAREST FIRE ALARM STATION SHALL NOT EXCEED 750 FEET.
8. THE DISTANCE TO THE NEAREST FIRE ALARM STATION SHALL NOT EXCEED 750 FEET. THE DISTANCE TO THE NEAREST FIRE ALARM STATION SHALL NOT EXCEED 750 FEET.
9. THE DISTANCE TO THE NEAREST FIRE ALARM STATION SHALL NOT EXCEED 750 FEET. THE DISTANCE TO THE NEAREST FIRE ALARM STATION SHALL NOT EXCEED 750 FEET.
10. THE DISTANCE TO THE NEAREST FIRE ALARM STATION SHALL NOT EXCEED 750 FEET. THE DISTANCE TO THE NEAREST FIRE ALARM STATION SHALL NOT EXCEED 750 FEET.
11. NO BUILDING SHALL EXCEED 4 STORIES IN HEIGHT. NO BUILDING SHALL EXCEED 4 STORIES IN HEIGHT.
12. THE DISTANCE TO THE NEAREST FIRE ALARM STATION SHALL NOT EXCEED 750 FEET. THE DISTANCE TO THE NEAREST FIRE ALARM STATION SHALL NOT EXCEED 750 FEET.
13. THE DISTANCE TO THE NEAREST FIRE ALARM STATION SHALL NOT EXCEED 750 FEET. THE DISTANCE TO THE NEAREST FIRE ALARM STATION SHALL NOT EXCEED 750 FEET.
14. THE DISTANCE TO THE NEAREST FIRE ALARM STATION SHALL NOT EXCEED 750 FEET. THE DISTANCE TO THE NEAREST FIRE ALARM STATION SHALL NOT EXCEED 750 FEET.
15. THE DISTANCE TO THE NEAREST FIRE ALARM STATION SHALL NOT EXCEED 750 FEET. THE DISTANCE TO THE NEAREST FIRE ALARM STATION SHALL NOT EXCEED 750 FEET.
16. THE DISTANCE TO THE NEAREST FIRE ALARM STATION SHALL NOT EXCEED 750 FEET. THE DISTANCE TO THE NEAREST FIRE ALARM STATION SHALL NOT EXCEED 750 FEET.
17. THE DISTANCE TO THE NEAREST FIRE ALARM STATION SHALL NOT EXCEED 750 FEET. THE DISTANCE TO THE NEAREST FIRE ALARM STATION SHALL NOT EXCEED 750 FEET.
18. THE DISTANCE TO THE NEAREST FIRE ALARM STATION SHALL NOT EXCEED 750 FEET. THE DISTANCE TO THE NEAREST FIRE ALARM STATION SHALL NOT EXCEED 750 FEET.

SITE DATA

SITE AREA: 35.92 ACRES
 PROPOSED ZONING: R-10
 MAINTAIN BUILDING AREA: 110,060 SQ. FT. *200 ROOM HOTEL

1 SITE PLAN
 1" = 100'



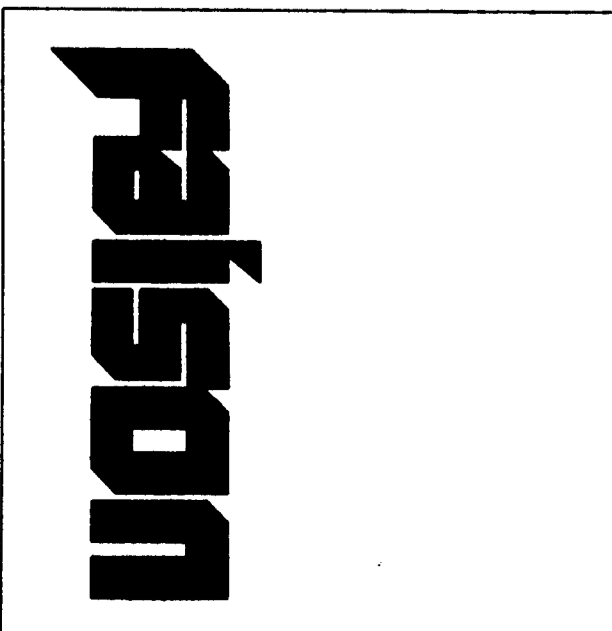
INTERSTATE 77



Trinkle
 Bryan
 Associates
 112 South Tyson
 2484
 731666 office
 333295 fax

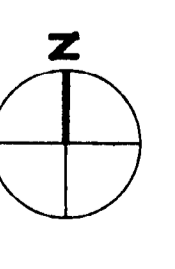
Revision Dates:
 NOVEMBER 18, 1996 REVISIONS
 JANUARY 11, 1997 REVISIONS

FORREST PARK
 REZONING



TECHNICAL DATA SHEET

Project Number: 0518100
 CAD File: ICP
 CAD Date: 05/19/96
 Issue Date: NOVEMBER 12, 1996
 PITTITON, N.A. 96-07
 AS FOR PUBLIC HEARING

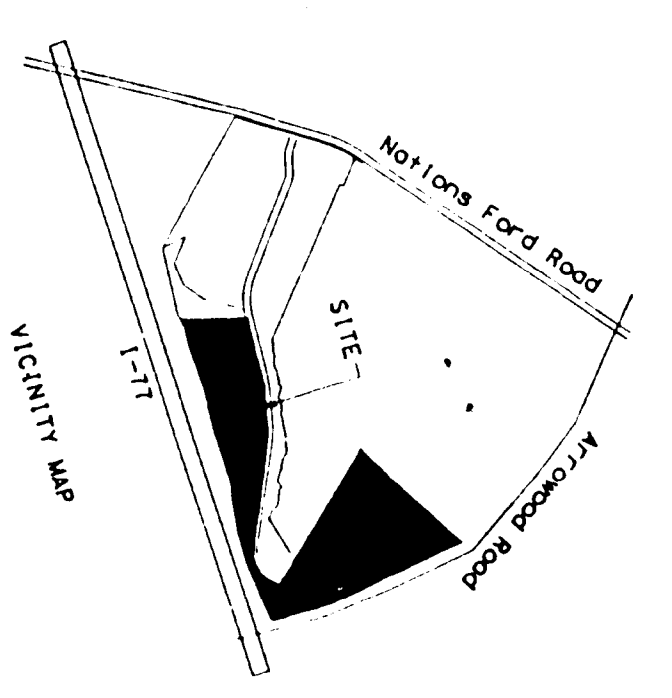
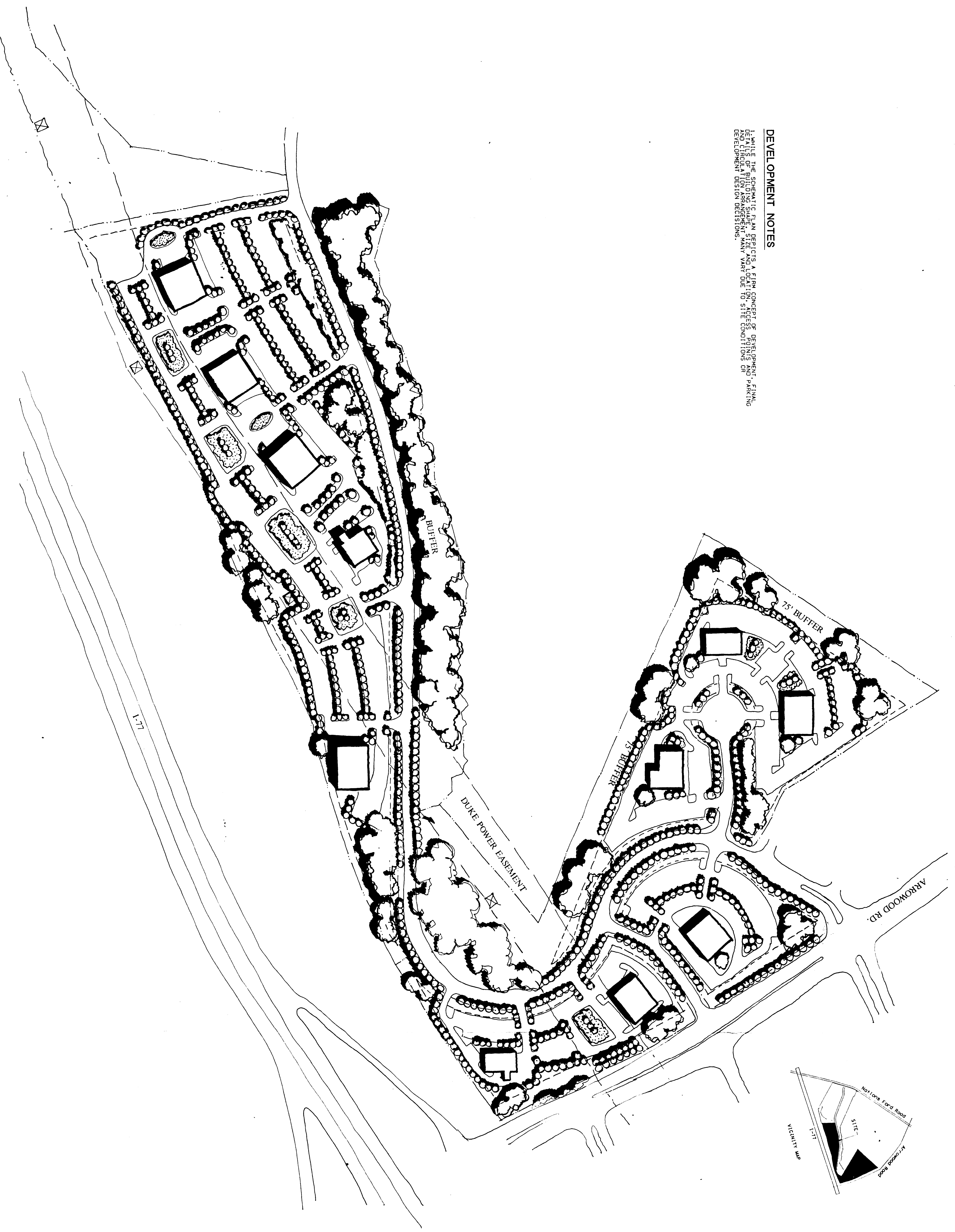


APPROVED BY CITY COUNCIL
 DATE 3/10/97

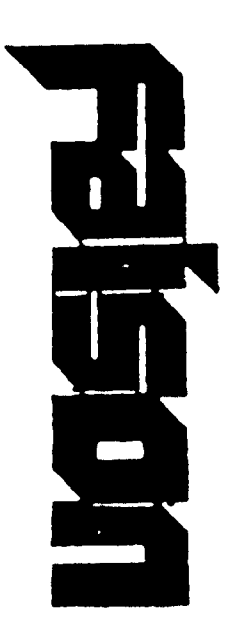
Sheet Number

Revision Date: 12 NOV 1996

DEVELOPMENT NOTES
 1. WHILE THE SCHEMATIC PLAN DEPICTS A FIRM CONCEPT OF DEVELOPMENT, FINALS AND UTILITY PLANS WILL BE REQUIRED TO DEVELOP A MORE DETAILED AND ACCURATE DEVELOPMENT AND UTILITY PLAN ARRANGEMENT. MANY VARY DUE TO SITE CONDITIONS OR DEVELOPMENT DESIGN DECISIONS.

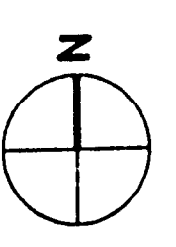


Forest Park
 REZONING



APPROVED BY CITY COUNCIL
 DATE 2/17/97

Sheet Title:
**FOREST PARK
 SCHEMATIC SITE
 PLAN**



Project Number: 95018.02
 CAD File:
 CAD Date:
 Issue Date: SEPTEMBER 6, 1996

1 SITE PLAN
 1" = 100'