

Aiken & Yelle Associates, PA
 Professional Engineers & Land Surveyors
 115 Wood Creek Court
 Charlotte, NC 28202
 704-375-9001

SITE SCHEMATIC PLAN
 FOR
 PIZZAGALLI INVESTMENT COMPANY

REGENCY EXECUTIVE PARK
 CITY OF CHARLOTTE, NORTH CAROLINA

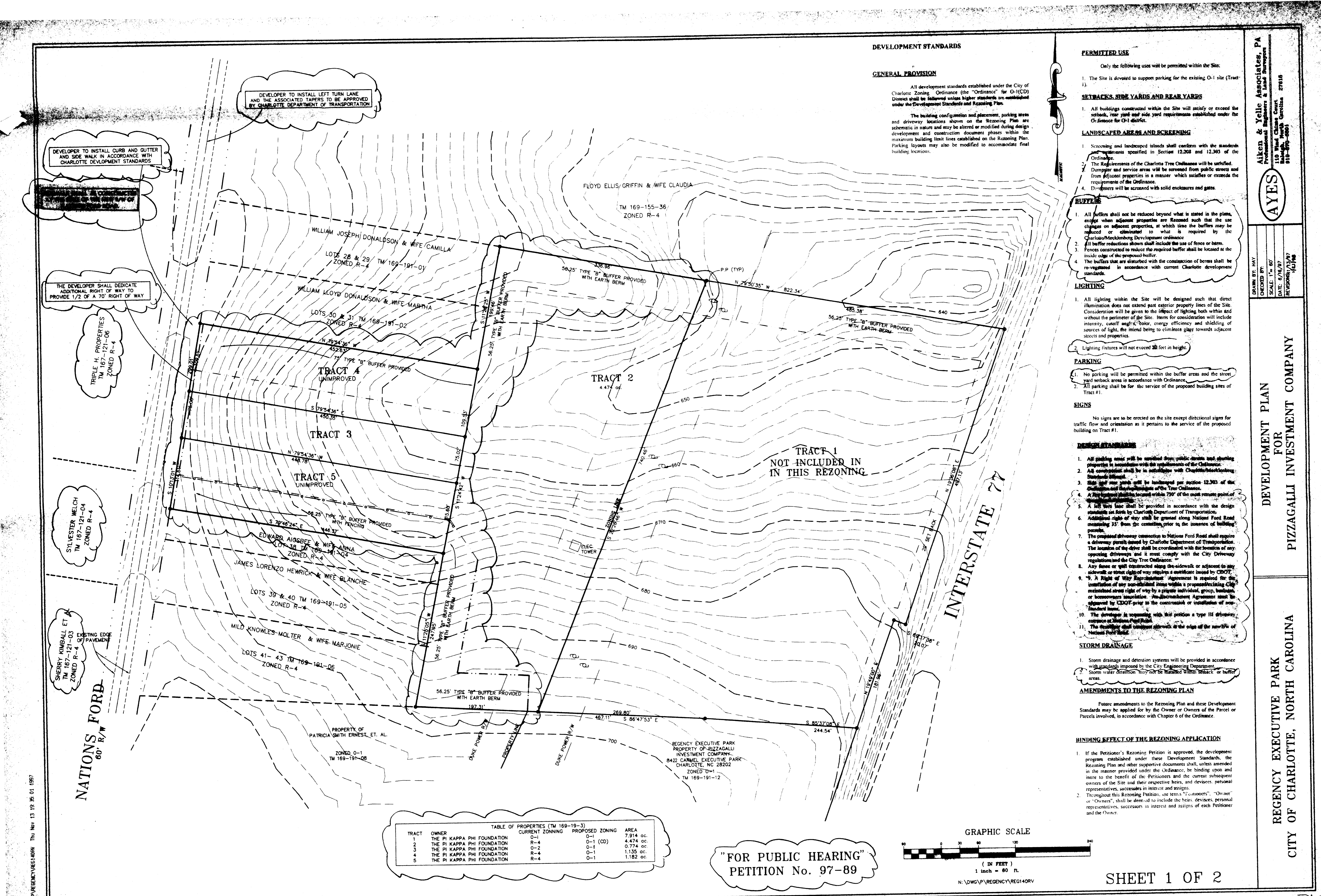
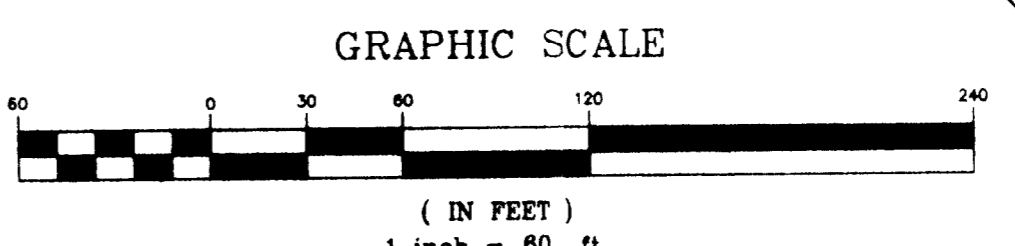
DRAWN BY: MAY
 CHECKED BY: 6/7
 SCALE: 1" = 60'
 DATE: 6/19/97
 REVISION: 1/1/97

TRACT	OWNER	TABLE OF PROPERTIES (TM 169-19-3)	CURRENT ZONING	PROPOSED ZONING	AREA
1	THE PI KAPPA PHI FOUNDATION	0-1	O-1	O-1 (CD)	7,914 ac
2	THE PI KAPPA PHI FOUNDATION	R-4	R-4	R-4	4,474 ac
3	THE PI KAPPA PHI FOUNDATION	O-2	O-2	O-2	0,774 ac
4	THE PI KAPPA PHI FOUNDATION	R-4	R-4	R-4	1,135 ac
5	THE PI KAPPA PHI FOUNDATION	R-4	R-4	R-4	1,182 ac

SITE DATA TABLE	
TOTAL AREA OF TRACTS	15.479 ACRES
PROPOSED BLDG. AREA	150,000 SF ±
REQUIRED PARKING (150,000/300)	500 SPACES
PARKING PROVIDED	750 SPACES

APPROVED BY CITY COUNCIL
 DATE 12/98

"FOR PUBLIC HEARING"
 PETITION No. 97-89



Aiken & Yelle Associates, PA
 Professional Engineers & Land Surveyors
 115 Wood Creek Court
 Charlotte, NC 28202
 704-375-9001

DEVELOPMENT PLAN
 FOR
 PIZZAGALLI INVESTMENT COMPANY

REGENCY EXECUTIVE PARK
 CITY OF CHARLOTTE, NORTH CAROLINA

DRAWN BY: MAY
 CHECKED BY: 6/7
 SCALE: 1" = 60'
 DATE: 6/19/97
 REVISION: 1/1/97

TRACT	OWNER	TABLE OF PROPERTIES (TM 169-19-3)	CURRENT ZONING	PROPOSED ZONING	AREA
1	THE PI KAPPA PHI FOUNDATION	0-1	O-1	O-1 (CD)	7,914 ac
2	THE PI KAPPA PHI FOUNDATION	R-4	R-4	R-4	4,474 ac
3	THE PI KAPPA PHI FOUNDATION	O-2	O-2	O-2	0,774 ac
4	THE PI KAPPA PHI FOUNDATION	R-4	R-4	R-4	1,135 ac
5	THE PI KAPPA PHI FOUNDATION	R-4	R-4	R-4	1,182 ac

SITE DATA TABLE	
TOTAL AREA OF TRACTS	15.479 ACRES
PROPOSED BLDG. AREA	150,000 SF ±
REQUIRED PARKING (150,000/300)	500 SPACES
PARKING PROVIDED	750 SPACES

APPROVED BY CITY COUNCIL
 DATE 12/98

"FOR PUBLIC HEARING"
 PETITION No. 97-89

