

VICINITY MAP N.T.S.

TAX PARCEL #125-032-05  
1.22 ACRES

**DEVELOPMENT DATA:**

EXISTING ZONING: UMUD-0  
(FOR SEATING EXEMPTION)

PROPOSED USE: PHASE II DETENTION FACILITY (JAIL)

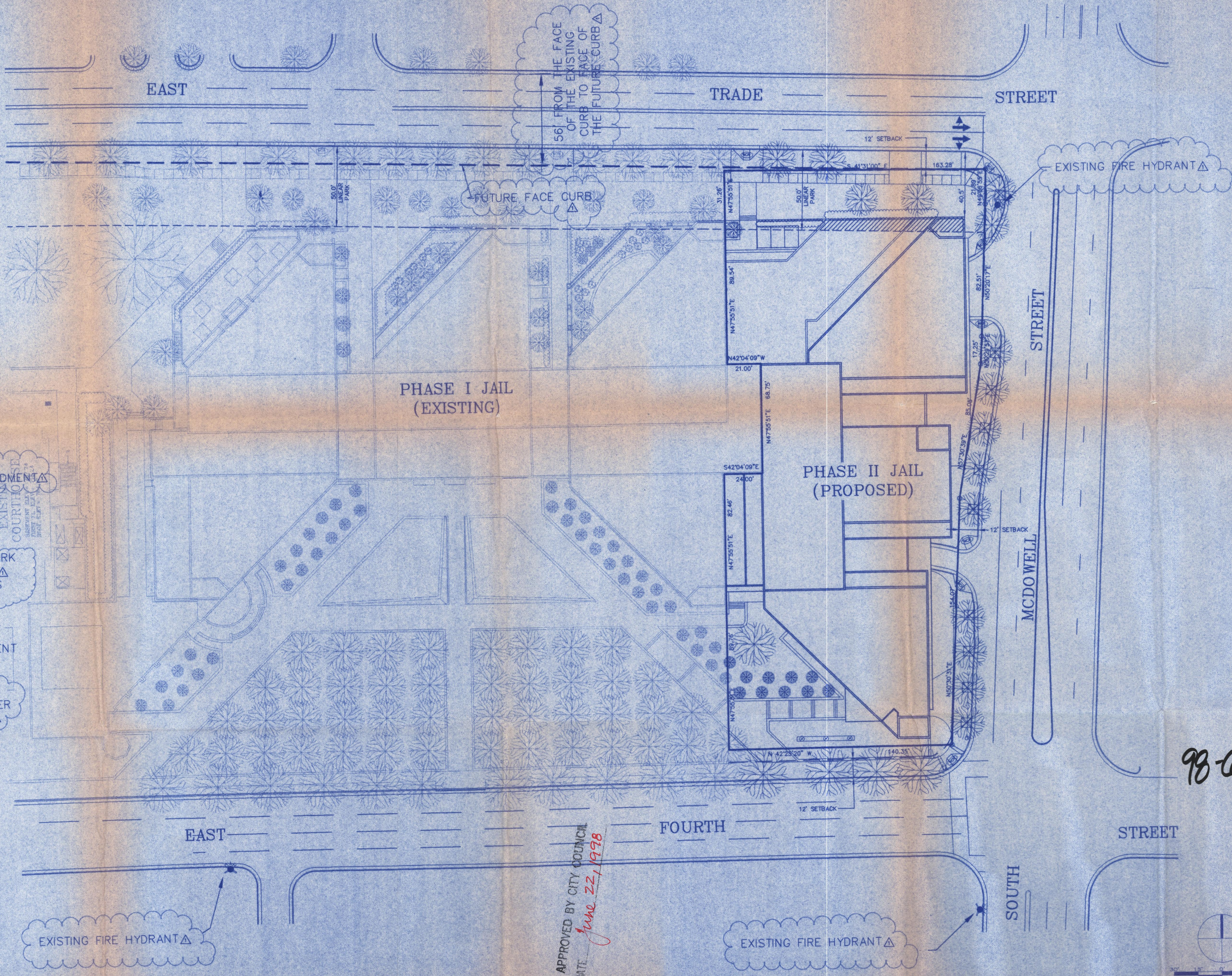
PROPOSED ZONING: UMUD-0  
SITE PLAN AMENDMENT

**UMUD-0 REQUESTS:**

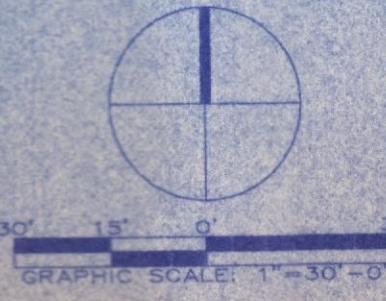
**REQUEST #1:**  
ENCROACHMENT INTO 50' LINEAR PARK ALONG EAST TRADE STREET (9.5' ENCROACHMENT INTO LINEAR PARK AS MEASURED FROM CURRENT CURB) Δ 35' OF CONTINUOUS SPANDREL GLASS = 15' EXCEPTION REQUESTED. Δ

**REQUEST #2:**  
TO ALLOW AN ALTERNATIVE TYPE OF GLASS AT THE STREET LEVEL ADJACENT TO SOUTH MCDOWELL STREET

**NOTE:** THE SITE ASSOCIATED WITH THIS PETITION SHALL COMPLY WITH ALL OTHER UMUD STANDARDS AND REGULATIONS. Δ



APPROVED BY CITY COUNCIL  
DATE June 22, 1998



GNA DESIGN ASSOCIATES, Inc.  
128 East Fourth Street  
Suite 408 (704) 373-1907  
Gmplots, NC 28202



©Copyright  
The use of these drawings  
without written permission  
from the architect/engineer  
is prohibited. Violators  
will be subject to legal  
action.

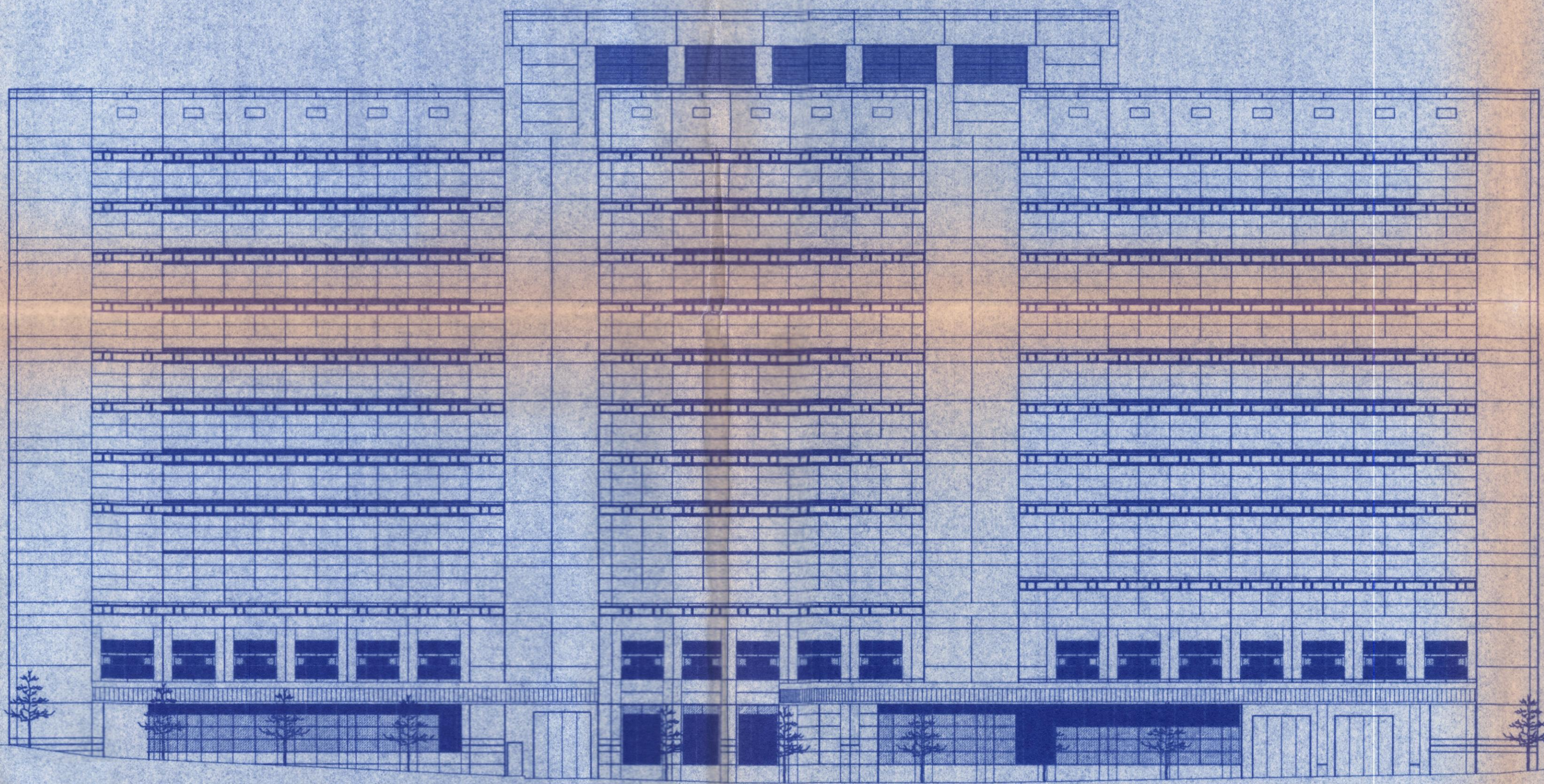
PROJECT: JAIL CENTRAL PHASE II  
MECKLENBURG COUNTY, PETITIONER  
SHEET TITLE: UMUD-0 REQUEST  
SITE PLAN

Project No.	41826
Checked by	JDO
Drawn by	HOK
Date Drawn	3/18/98
Revisions	
1	5/26/98 REVISION
2	PER STAFF COMMENTS
Sheet	

FOR PUBLIC HEARING: PETITION # 98-62

125-032-05 P



98-63



35

CONTINUOUS SPANDREL GLASS @ STREET LEVEL. △

ELEVATION - McDOWELL STREET

-  SPANDREL GLASS
-  VISION GLASS (TRANSPARENT)

THE UMUD ORDINANCE REQUIRES GLASS AT THE PEDESTRIAN LEVEL.

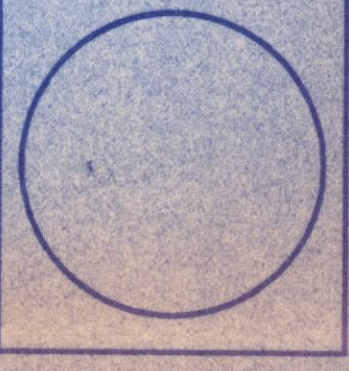
SPANDREL GLASS IS PROVIDED IN SOME AREAS INSTEAD OF TRANSPARENT OR VISION GLASS, FOR ONE OF TWO REASONS:

1. THE PROXIMITY OF STRUCTURAL WALLS OR MEMBERS BEHIND THE GLASS PRECLUDES THE USE OF VISION GLASS.
2. TO PROTECT THE PRIVACY OF INMATES.

THE PROPOSED SPANDREL GLASS IS THE MOST APPROPRIATE MATERIAL TO MEET THE REQUIREMENTS FOR THE DESIGN AND USE OF THE FACILITY, WHILE CONFORMING WITH THE UMUD ORDINANCE REQUIREMENT FOR THE USE OF GLASS AT THE PEDESTRIAN LEVEL.

FOR PUBLIC HEARING: PETITION # 98-62

**GNA DESIGN ASSOCIATES, Inc.**  
 428 East Fourth Street  
 Suite 408 (704) 373-1907  
 Charlotte, NC 28202  
 Surveying • Landscape Architecture • Civil Engineering

© Copyright  
The use of these drawings  
without written permission  
from the architect/engineer  
is prohibited. Violators  
will be subject to legal  
action.

PROJECT: **JAIL CENTRAL PHASE II  
 MECKLENBURG COUNTY, PETITIONER**  
 SHEET TITLE: **EAST ELEVATION  
 AT McDOWELL STREET**

Project No.	<b>41826</b>
Checked by	J00
Drawn by	H0K
Date Drawn	3/18/98
Revisions	
△ 5/26/98 REVISE PER STAFF COMMENTS	
○	
○	
○	
Sheet	



SWAPS:DW: 0302 PLOT: 41826/ELEV.DWG