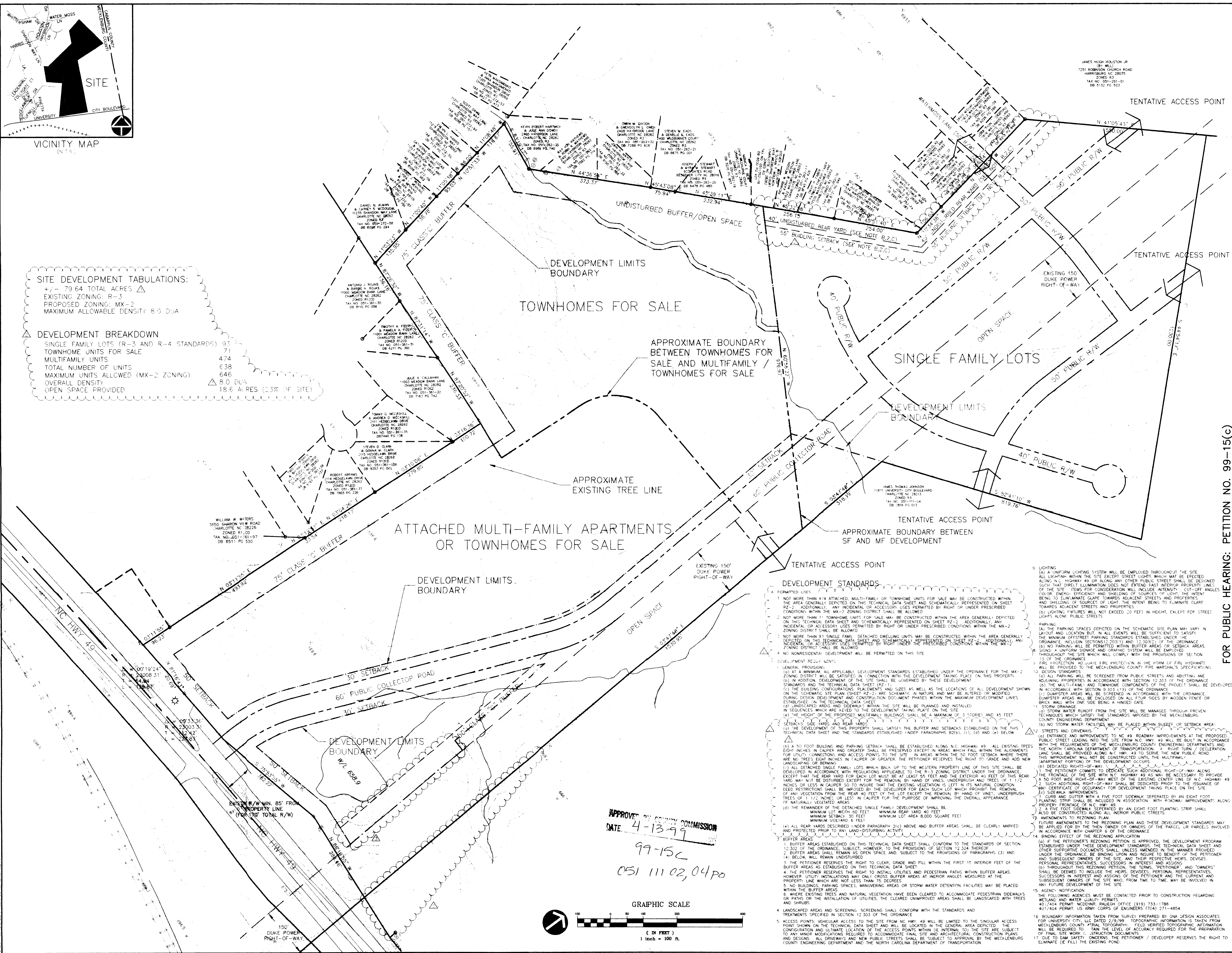


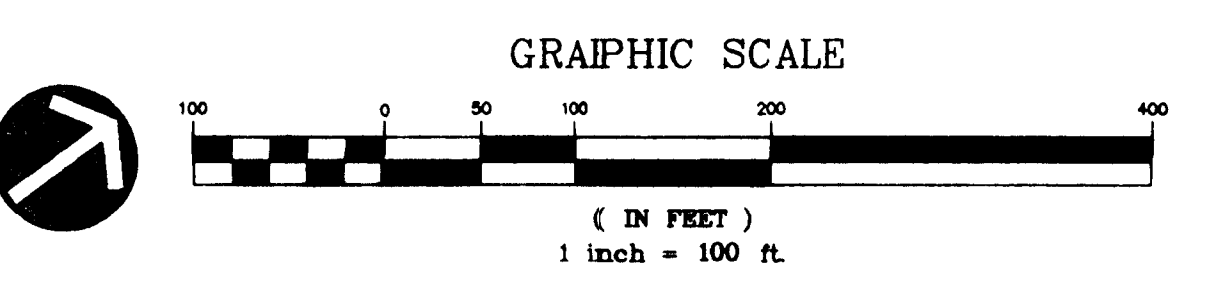
VICINITY MAP

SITE DEVELOPMENT TABULATIONS:
 +/- 79.64 TOTAL ACRES
 EXISTING ZONING: R-3
 PROPOSED ZONING: MX-2
 MAXIMUM ALLOWABLE DENSITY: 8.0 DUA

DEVELOPMENT BREAKDOWN
 SINGLE FAMILY LOTS (R-3 AND R-4 STANDARDS) 93
 TOWNHOME UNITS FOR SALE 71
 MULTIFAMILY UNITS 474
 TOTAL NUMBER OF UNITS 638
 MAXIMUM UNITS ALLOWED (MX-2 ZONING) 646
 OVERALL DENSITY 8.0 DUA
 OPEN SPACE PROVIDED 18.6 ACRES (23% OF SITE)



APPROVED BY COUNTY COMMISSION
 DATE 4-13-99
 99-15C
 051 111 02, 04 po



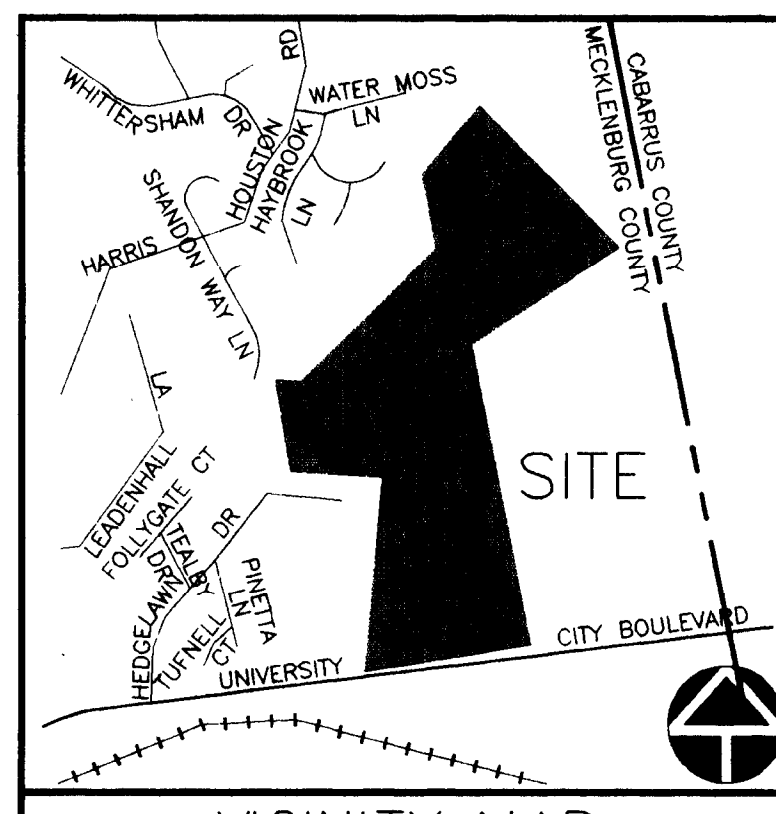
FOR PUBLIC HEARING: PETITION NO. 99-15(C)

GNA DESIGN ASSOCIATES, Inc.
 228 East Fourth Street
 Charlotte, NC 28202
 Phone: 704.333.1907
 Fax: 704.333.9533

NC 49 CONDITIONAL REZONING
 A MIXED USE RESIDENTIAL DEVELOPMENT
 PETITIONER: UNIVERSITY CITY, L.L.C.

TECHNICAL DATA SHEET

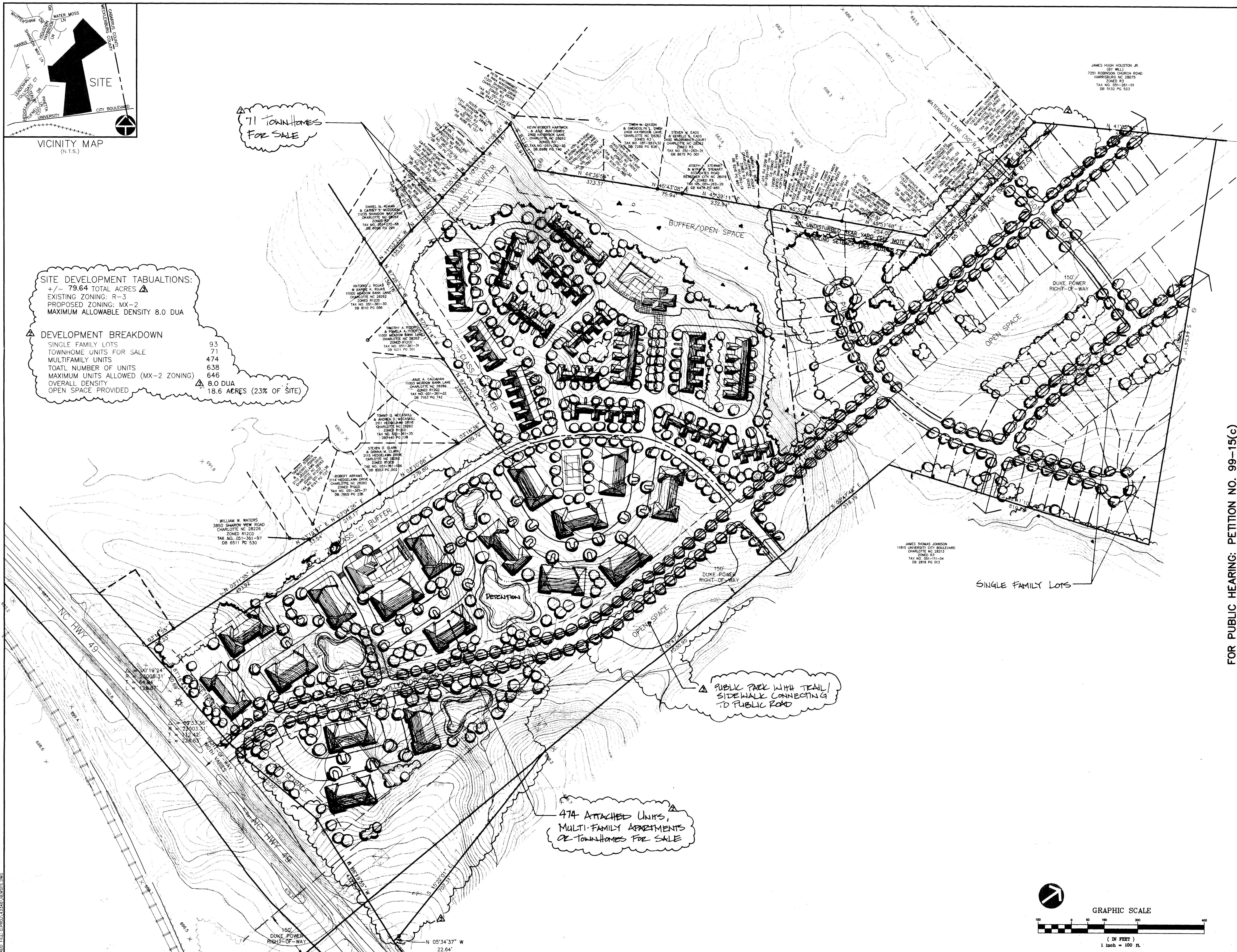
Project No. 43346
 Sheet RZ-1



VICINITY MAP

SITE DEVELOPMENT TABULATIONS:
 +/- 79.64 TOTAL ACRES
 EXISTING ZONING: R-3
 PROPOSED ZONING: MX-2
 MAXIMUM ALLOWABLE DENSITY: 8.0 DUA

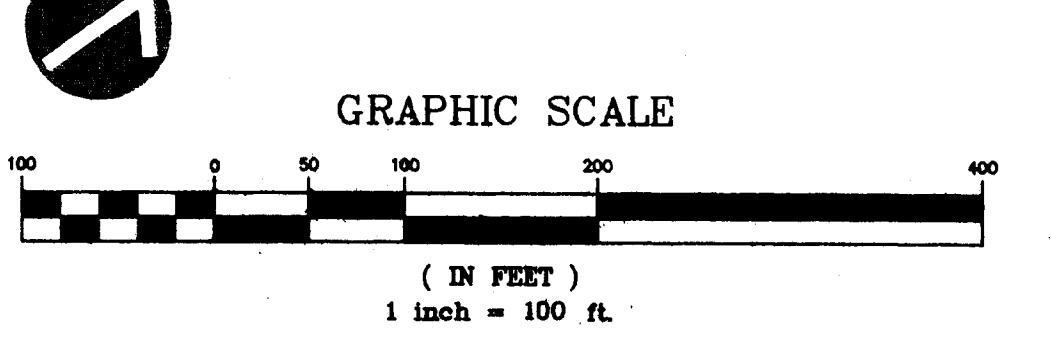
DEVELOPMENT BREAKDOWN
 SINGLE FAMILY LOTS 93
 TOWNHOME UNITS FOR SALE 71
 MULTIFAMILY UNITS 474
 TOTAL NUMBER OF UNITS 638
 MAXIMUM UNITS ALLOWED (MX-2 ZONING) 646
 OVERALL DENSITY 8.0 DUA
 OPEN SPACE PROVIDED 18.6 ACRES (23% OF SITE)



71 TOWNHOMES FOR SALE

474 ATTACHED UNITS, MULTI-FAMILY APARTMENTS OR TOWNHOMES FOR SALE

PUBLIC PARK WITH TRAIL/SIDEWALK CONNECTING TO PUBLIC ROAD



FOR PUBLIC HEARING: PETITION NO. 99-15(C)

GNA DESIGN ASSOCIATES, Inc.
 228 East Fourth Street
 Charlotte, NC 28202
 Phone: 704.333.1907
 Fax: 704.333.9533

NC 49 CONDITIONAL REZONING
 A MIXED USE RESIDENTIAL DEVELOPMENT
 PETITIONER: UNIVERSITY CITY, L.L.C.

SCHEMATIC SITE PLAN

Project No. 43346
 Sheet RZ-2

Checked By: M/S
 Drawn By: M/S
 Date Drawn: 12/28/98

Revisions:
 1. 02/12/99
 2. 03/03/99
 3. 03/22/99

Project Number: 43346
 Sheet: RZ-2