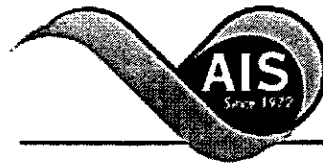




* 0 0 B R E A K 0 0 *



**ADVANCED
IMAGING
SYSTEMS**

www.aisimc.com

An Information
Management Company

City of Charlotte – Planning Dept. Scanning Rezoning Files

Petition # _____

Document type:

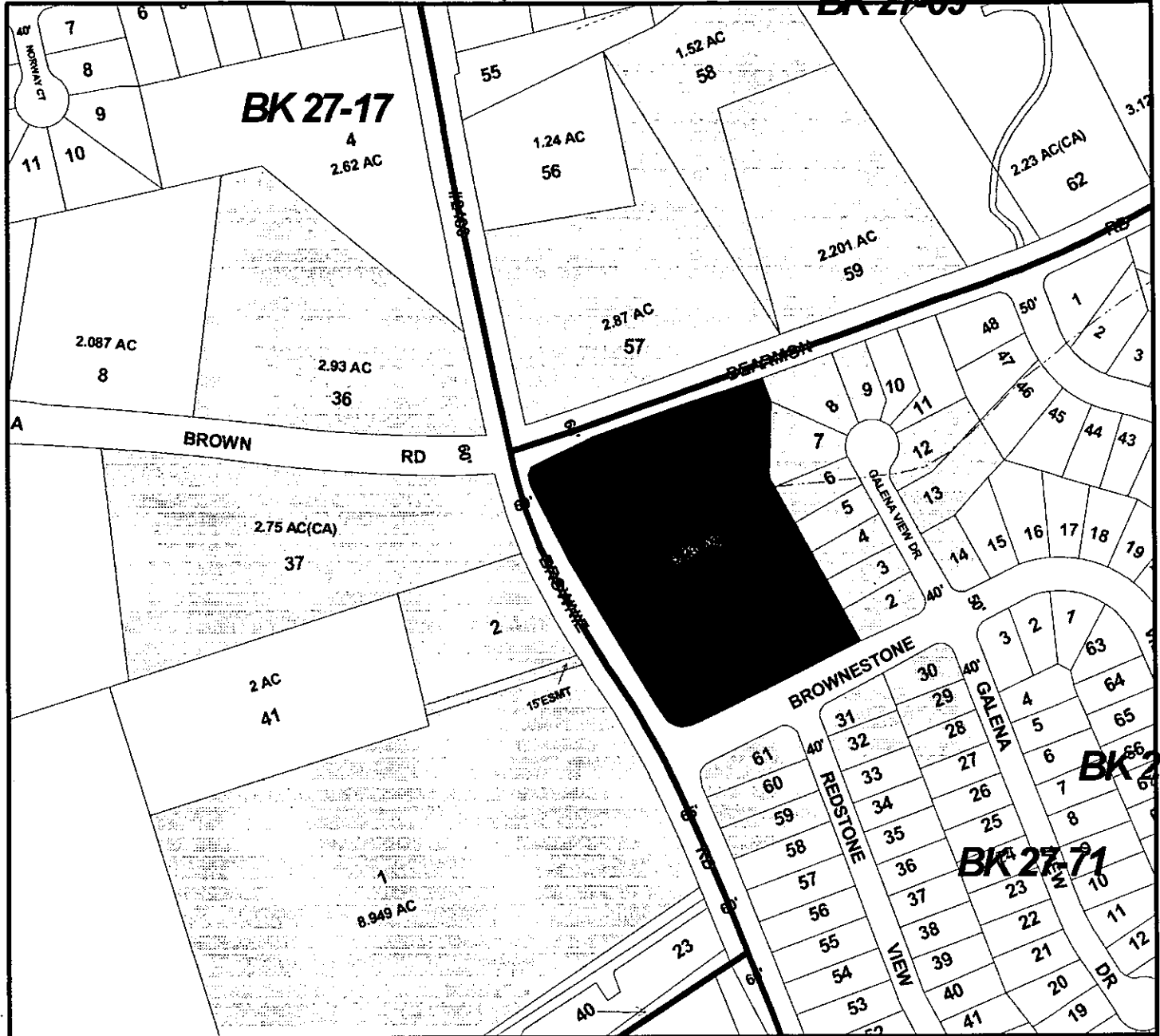
- Applications
- Correspondence
- Department Comments
- Land Use Consistency
 - Mail Info
 - Mapping
 - Other
- Site Plans



* 0 0 B R E A K 0 0 *

MECKLENBURG COUNTY, NC GIS PUBLIC ACCESS SYSTEM

BK 27-09

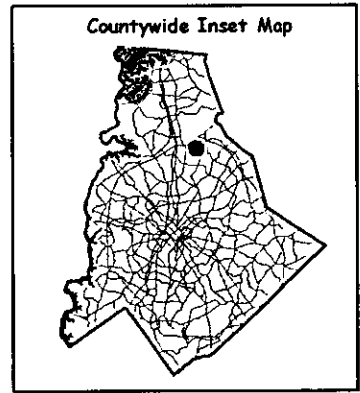
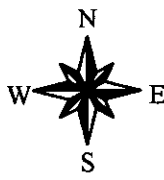


Tax Parcel-Id#s Selected: See Tax Information Report for List of Parcel-Id#s

Tax Book & Page Selected: NA

LEGEND

- Rivers/Creeks/Streams
- I-485 Corridor
- Utility ROW
- Utility ROW
- Railroad ROW
- Water Bodies
- Tax Page Boundaries
- Tax Parcels



00-80

Scale : 1 Inch = 300 Feet
 Map Created on Tuesday, March 7, 2000 11:35 AM

This map is prepared for the inventory of real property within Mecklenburg County and is compiled from recorded deeds, plats, tax maps, surveys, planimetric maps, and other public records and data. Users of this map are hereby notified that the aforementioned public primary information sources should be consulted for verification. Mecklenburg County and its mapping contractors assume no legal responsibility for the information contained herein.