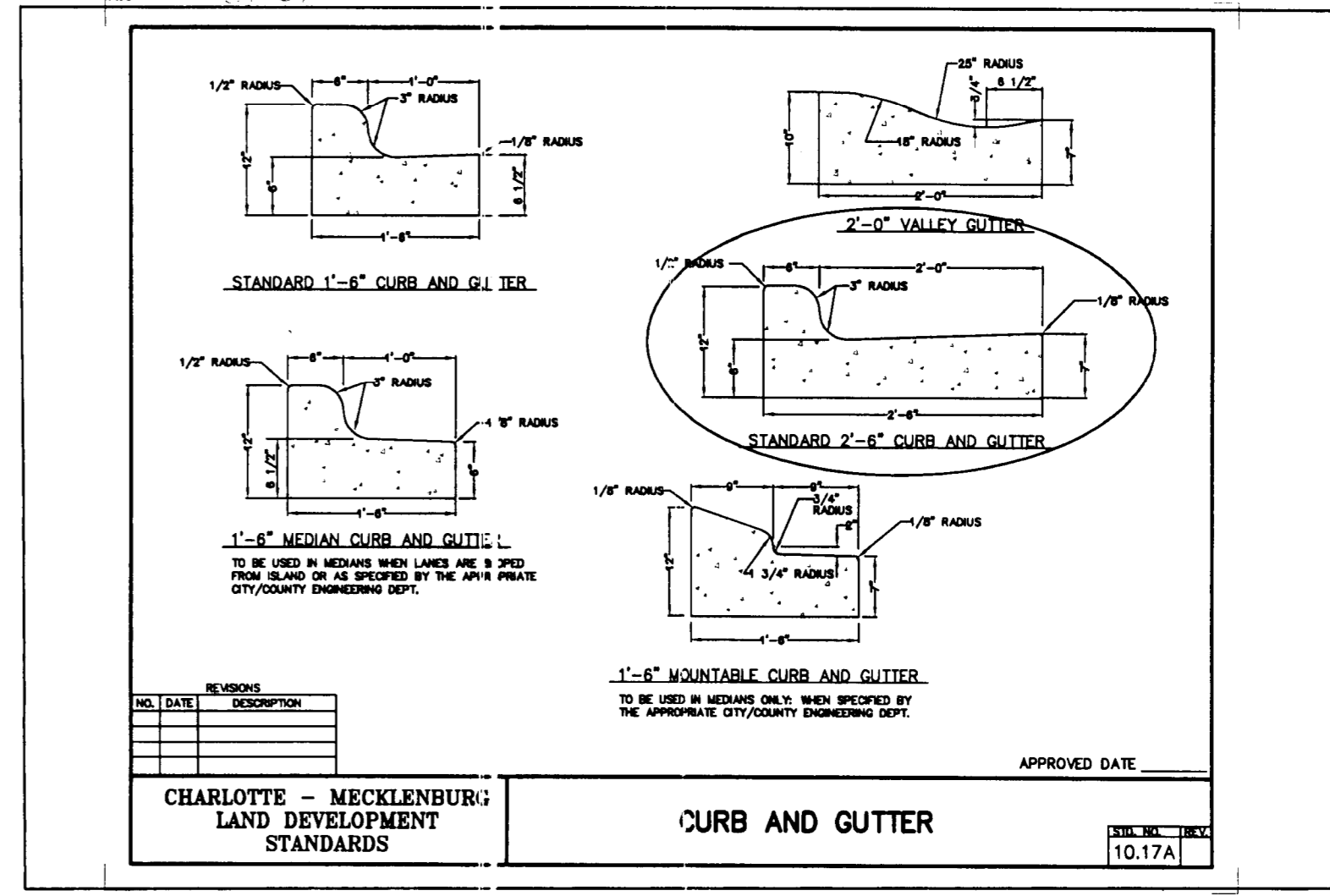
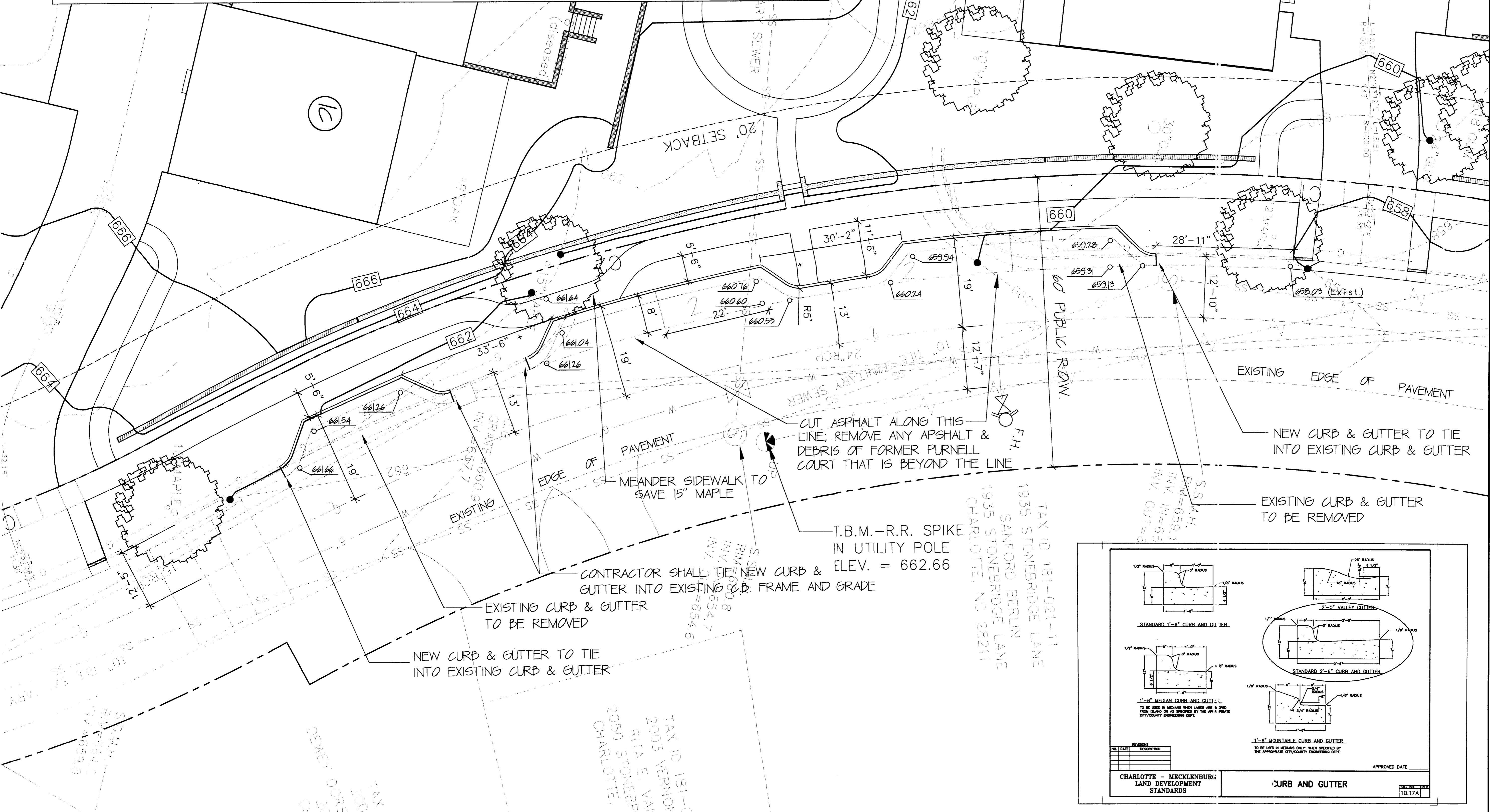


SECTION - VERNON DRIVE

NOT TO SCALE



**CAMBRIDGE COURT**  
 CHARLOTTE, NORTH CAROLINA

**DAVID SIMONINI CUSTOM HOMES**  
 501 E. MOREHEAD ST. SUITE 4  
 CHARLOTTE, NORTH CAROLINA, 28202  
 PHONE: (704) 334-6455 FAX: (704) 334-6123

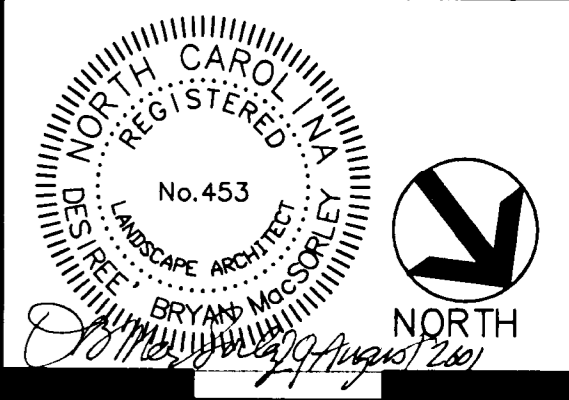
**Design Resource Group**

1230 West Morehead Street, Suite 214  
 Charlotte, NC 28208  
 704.343.0608 fax 704.358.3093  
 www.drgrp.com

- Landscape Architecture
- Urban Design
- Civil Engineering
- Land Planning



**VERNON DRIVE PARALLEL PARKING PLAN**



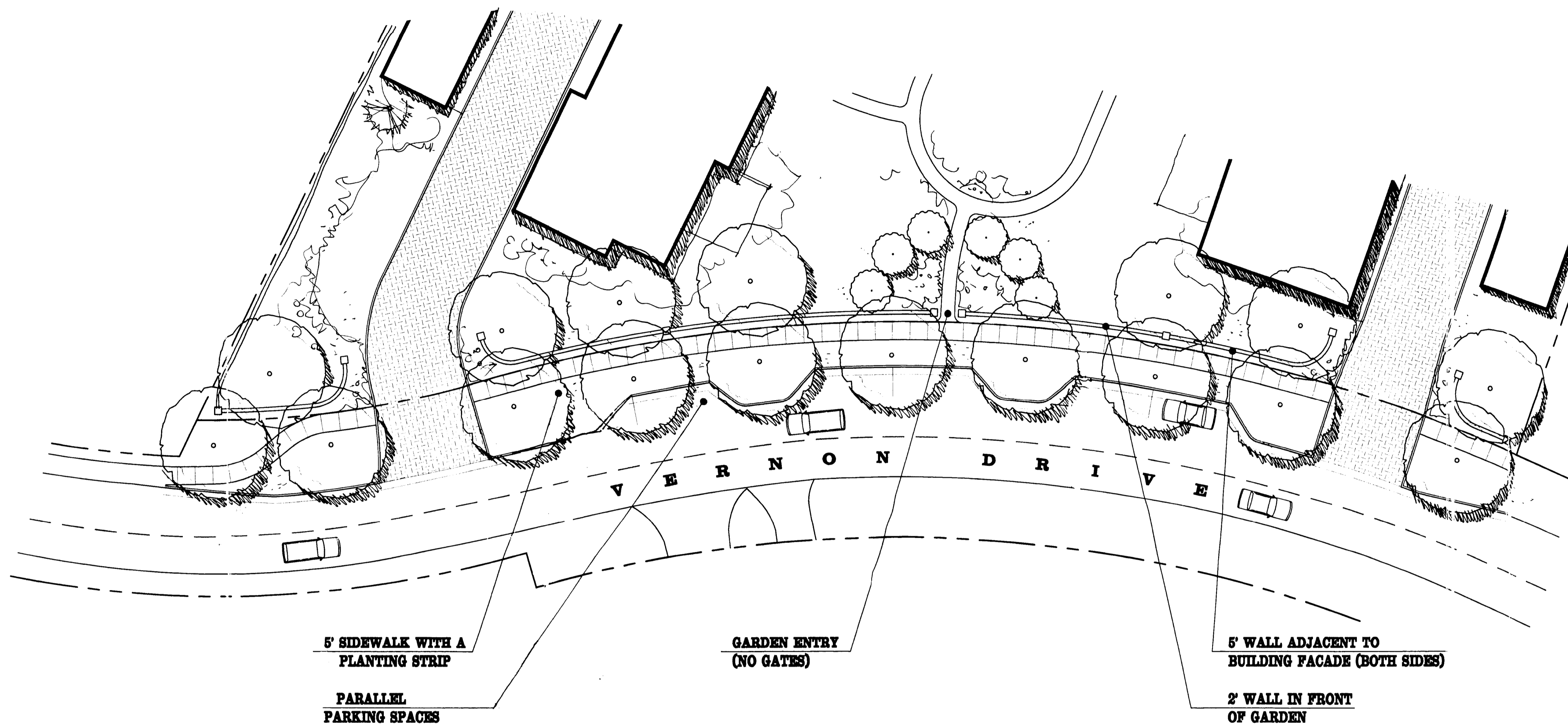
Scale: 1" = 10'

Date: 8 AUGUST 2001

Project No.: 078-002

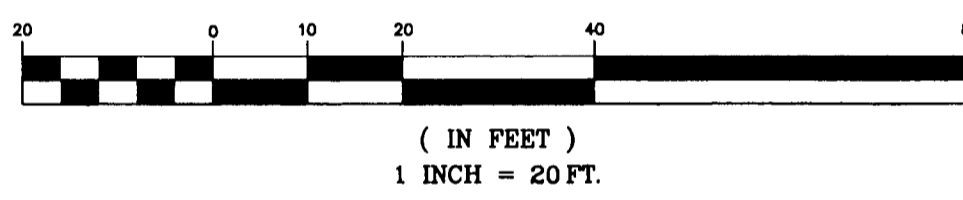
Revisions:

|                |              |
|----------------|--------------|
| 22 AUGUST 2001 | Per Bibury   |
|                | Row Revision |
| 29 AUGUST 2001 | Trees Moved  |
|                | Out of R/W   |



## EXHIBIT C

# PROPOSED PARALLEL PARKING ON VERNON DRIVE



ATTACHED TO ADMINISTRATIVE

APPROVAL

DATED: *September 14, 2001*

BY: MARTIN R. CRAMTON, JR.

*2001-08*

*Design*  
**Resource Group**

1230 West Morehead Street, Suite 214  
Charlotte, NC 28208  
704.343.0908 fax 704.358.3063  
www.drgpa.com

- Landscape Architecture
- Urban Design
- Civil Engineering
- Land Planning

*DRG*

*2001-08*

### CHARLOTTE - MECKLENBURG PLANNING COMMISSION

#### INTER - OFFICE COMMUNICATION

DATE: September 14, 2001

TO: Robert Brandon  
Zoning Administrator

FROM: *MRC*  
Martin R. Cramton, Jr.  
Planning Director

SUBJECT: Petition 2001-08 David Simonini Development Group.

Attached are copies of the revised Exhibit C showing parallel parking and a parallel parking plan for the above petition. Since the addition of parallel parking is a minor change and does not alter the intent of the approved plan, I am administratively approving this revised plan. Please use these plans when evaluating requests for building permits and certificates of occupancy. Note that all other ordinance and conditional plan requirements will still apply.