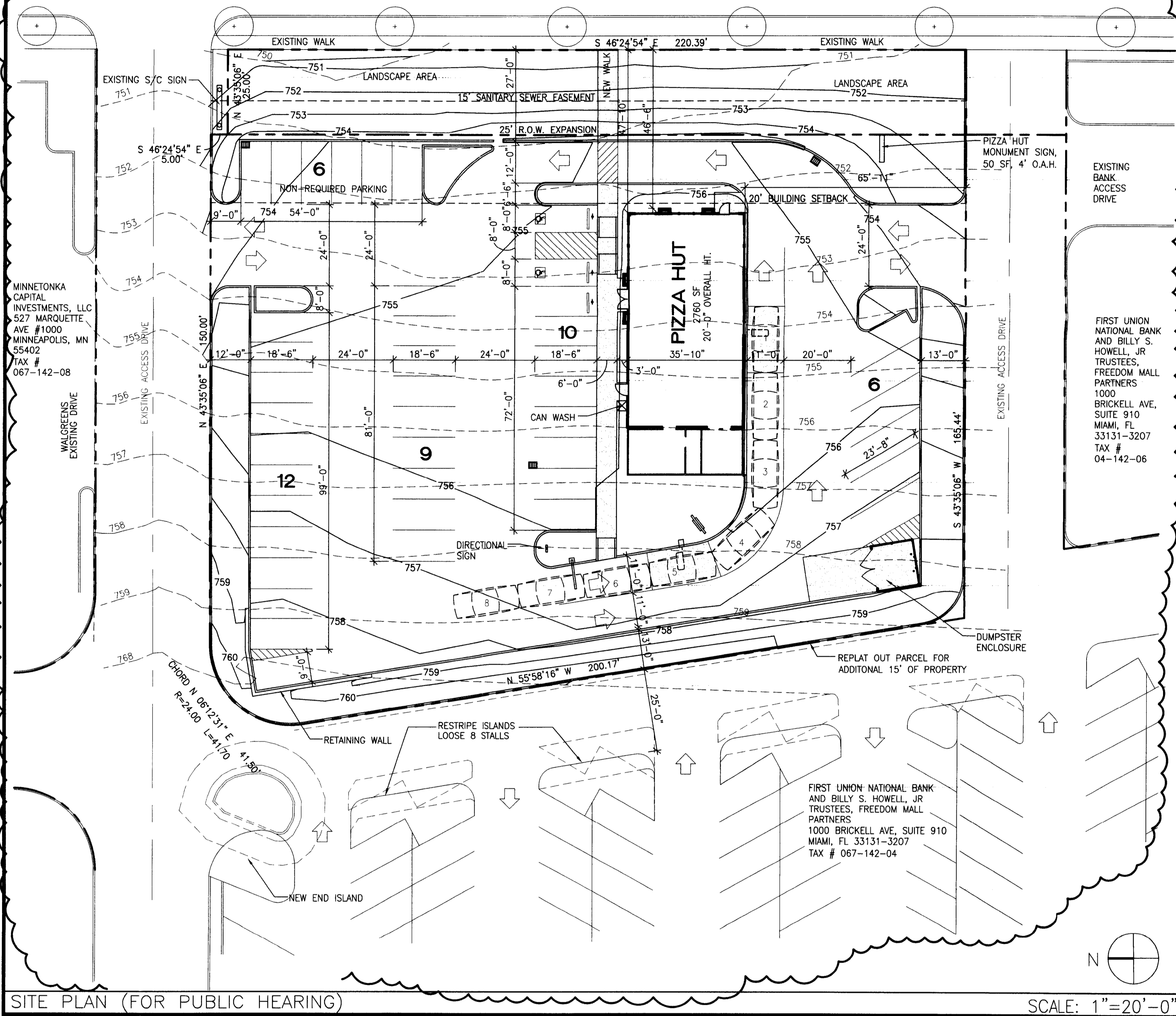


CHARLOTTE FREEDOM MART LTD.
C/O HERITAGE GROUP ASSOC.
21031 VENTURA BLVD, SUITE 419
WOODLAND HILLS, CA 91364-2230
TAX # 065-036-10 (CARD 1,2,3 OF 3) &
065-036-13

FREEDOM DRIVE
(150' R.O.W.)



SITE AREA BREAKDOWN		
DESCRIPTION	AREA	%
SITE (GROSS)	41269 S.F.	100%
PAVING, SIDEWALKS, TRASH ENC.	9497 S.F.	23%
LANDSCAPE	XXXX S.F.	XX%
BUILDING (G.F.A.)	2,760 S.F.	XX%
OTHER	-----	----

PARKING REQUIREMENTS	
REQUIRED PARKING:	37
1 SPACE/75 G.F.A.	37
PARKING PROVIDED:	37

SIGN NOTES	
1. ALL SIGNAGE SHALL BE PERMITTED UNDER SEPARATE SIGN PERMIT BY SIGN VENDOR.	
2. FOUNDATION BASES FOR FREESTANDING POLE SIGN, DIRECTIONAL SIGNS, DRIVE THRU MENU BOARD AND SPEAKER POST BY SIGN VENDOR.	
3. G.C. TO PROVIDE ROUGH-IN ELECTRICAL AS NOTED FOR SIGNS.	

- ### SITE PLAN NOTES
- PRIOR TO STARTING CONSTRUCTION THE CONTRACTOR SHALL BE RESPONSIBLE TO MAKE SURE THAT ALL REQUIRED PERMITS AND APPROVALS HAVE BEEN OBTAINED. NO CONSTRUCTION OR FABRICATION SHALL BEGIN UNTIL THE CONTRACTOR HAS RECEIVED AND THOROUGHLY REVIEWED ALL PLANS AND OTHER DOCUMENTS APPROVED BY ALL OF THE PERMITTING AUTHORITIES.
 - ALL WORK SHALL BE PERFORMED IN ACCORDANCE WITH THESE PLANS AND SPECIFICATIONS AND THE REQUIREMENTS AND STANDARDS OF THE LOCAL GOVERNING AUTHORITY. THE GEOTECHNICAL REPORT AND RECOMMENDATIONS SET FORTH THEREIN ARE A PART OF THE REQUIRED CONSTRUCTION DOCUMENTS AND IN CASE OF CONFLICT SHALL TAKE PRECEDENCE, UNLESS SPECIFICALLY NOTED OTHERWISE ON THE PLANS. THE CONTRACTOR SHALL NOTIFY THE CONSTRUCTION MANAGER OF ANY DISCREPANCY BETWEEN GEOTECHNICAL REPORT & PLANS.
 - SITE CLEARING SHALL INCLUDE THE LOCATION AND REMOVAL OF ALL UNDERGROUND TANKS, PIPES, VALVES ETC.
 - SITE GRADING SHALL BE PERFORMED IN ACCORDANCE WITH THESE PLANS & SPECIFICATIONS AND THE RECOMMENDATIONS SET FORTH IN THE GEOTECHNICAL REPORT REFERENCED IN THIS PLAN SET. THE CONTRACTOR SHALL BE RESPONSIBLE FOR REMOVING & REPLACING ALL SOFT, YIELDING OR UNSUITABLE MATERIALS AND REPLACING WITH SUITABLE MATERIALS AS SPECIFIED IN THE GEOTECHNICAL REPORT. ALL EXCAVATED OR FILLED AREAS SHALL BE COMPACTED TO 95% OF MODIFIED PROCTOR MAXIMUM DENSITY PER A.S.T.M. TEST D-598. MOISTURE CONTENT AT TIME OF PLACEMENT SHALL NOT EXCEED 2% ABOVE OR 3% BELOW OPTIMUM. CONTRACTOR SHALL SUBMIT A COMPACTION REPORT PREPARED BY A QUALIFIED SOILS ENGINEER, REGISTERED WITHIN THE STATE WHERE THE WORK IS PERFORMED, VERIFYING THAT ALL FILLED AREAS AND SUBGRADE AREAS WITHIN THE BUILDING PAD AREA AND AREAS TO BE PAVED HAVE BEEN COMPACTED IN ACCORDANCE WITH THESE PLANS AND SPECS AND THE RECOMMENDATIONS SET FORTH IN THE GEOTECHNICAL REPORT.
 - THE ALTA SURVEY SHALL BE CONSIDERED A PART OF THESE PLANS. THE SURVEY WAS PREPARED BY R.B. PHARR AND ASSOCIATES DATED MARCH 07, 2001.
 - THE LOCATIONS OF UNDERGROUND FACILITIES SHOWN ON THESE PLANS ARE BASED ON FIELD SURVEYS AND LOCAL UTILITY COMPANY RECORDS. IT SHALL BE THE CONTRACTOR'S FULL RESPONSIBILITY TO CONTACT THE VARIOUS UTILITY COMPANIES TO LOCATE THEIR FACILITIES PRIOR TO STARTING CONSTRUCTION. NO ADDITIONAL PENALTION SHALL BE PAID TO THE CONTRACTOR FOR DAMAGE AND REPAIR TO THESE FACILITIES CAUSED BY HIS WORK FORCE.
 - ALL DIMENSIONS AND GRADES SHOWN ON THE PLANS SHALL BE FIELD VERIFIED BY THE CONTRACTOR PRIOR TO CONSTRUCTION. CONTRACTOR SHALL NOTIFY THE CONSTRUCTION MANAGER IF ANY DISCREPANCIES EXIST PRIOR TO PROCEEDING WITH CONSTRUCTION FOR NECESSARY PLAN OR GRADE CHANGES. NO EXTRA COMPENSATION SHALL BE PAID TO THE CONTRACTOR FOR REMEDIAL WORK DUE TO DIMENSIONS OR GRADES SHOWN INCORRECTLY ON THESE PLANS IF SUCH NOTIFICATION HAS NOT BEEN GIVEN.
 - ALL CONCRETE SHALL HAVE THE MINIMUM COMPRESSIVE STRENGTH AT 28 DAYS AS INDICATED IN SPECIFICATIONS UNLESS OTHERWISE NOTED ON THE PLANS, DETAILS AND/OR GEOTECHNICAL REPORT.

KEY NOTES	GENERAL NOTES
	1. SEE ATTACHED SURVEY BY R.B. PHARR & ASSOCIATES DATED MARCH 7, 2001.
	2. SEE SURVEY (NOTED ABOVE) FOR CERTIFICATION OF FLOOD PLAIN, EXISTING SETBACKS, HORSESHOE, VIGNOY MAP.
	3. THIS IS A SINGLE PHASE PROJECT.
	4. PROPOSED ZONING B1C0
	5. NO WALL "PAK" LIGHTING ALLOWED
	6. DUMPSTERS TO BE WITHIN AN ENCLOSURE WITH GATES
	7. PETITION NUMBER: 01-098

GRADING LEGEND	
---	EXISTING CONTOURS
---	PROPOSED CONTOURS

ZONING DATA BLOCK	
EXISTING ZONING:	B-2
PROPOSED ZONING:	B1C0
PROPOSED USE:	RESTAURANT WITH DRIVE-THRU SERVICE
TOTAL ALLOWED SQUARE FOOTAGE:	F.A.R.=5
MAXIMUM HEIGHT OF DETACHED LIGHTING:	25'-0"

SITE EQUIPMENT SCHEDULE			APPROVED BY CITY COUNCIL	
KEYNOTE	QTY.	DESCRIPTION	DATE	
21	X	D	FREESTANDING POLE SIGN	AREA= XX SF, HT= XX OAH
20	X	D	MONUMENT SIGN	AREA= XX SF, HT= XX OAH
18	X	D	LOOP DETECTOR	
19	X	D	SPEAKER POST W/ LOOP DETECTOR	
19	X	D	MENU BOARD	AREA= XX SF, HT= XX OAH
22	X	D	DIRECTIONAL SIGN W/ LOGO	AREA= XX SF, HT= XX OAH, TEXT= DRIVE THRU --/BLANK
23	X	D	DIRECTIONAL SIGN W/ LOGO	AREA= XX SF, HT= XX OAH, TEXT= DO NOT ENTER/THANK YOU
28	X	D	CLEARANCE BAR	TEXT= CLEARANCE 8'-6"

SITE PLAN (FOR PUBLIC HEARING)

SCALE: 1"=20'-0"

PROGRESS SET

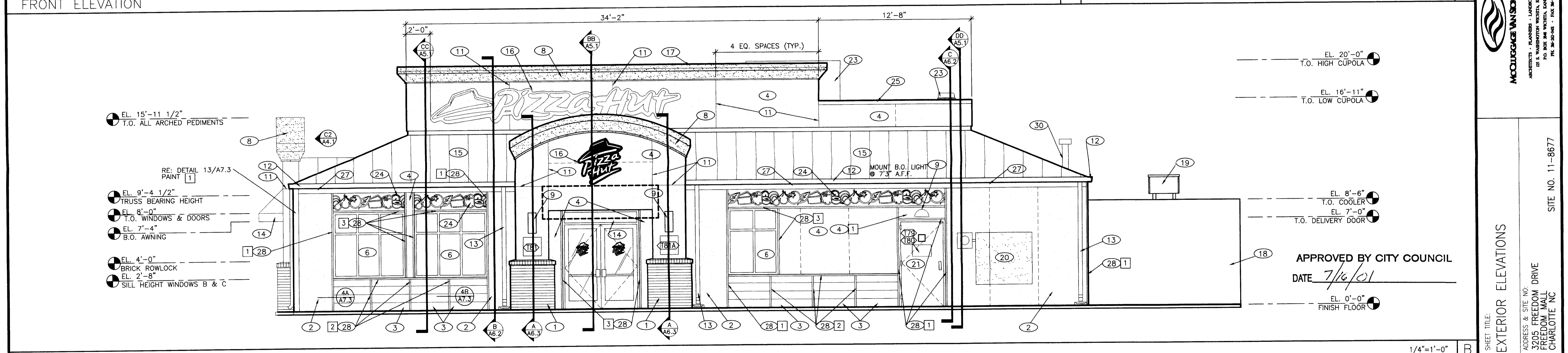
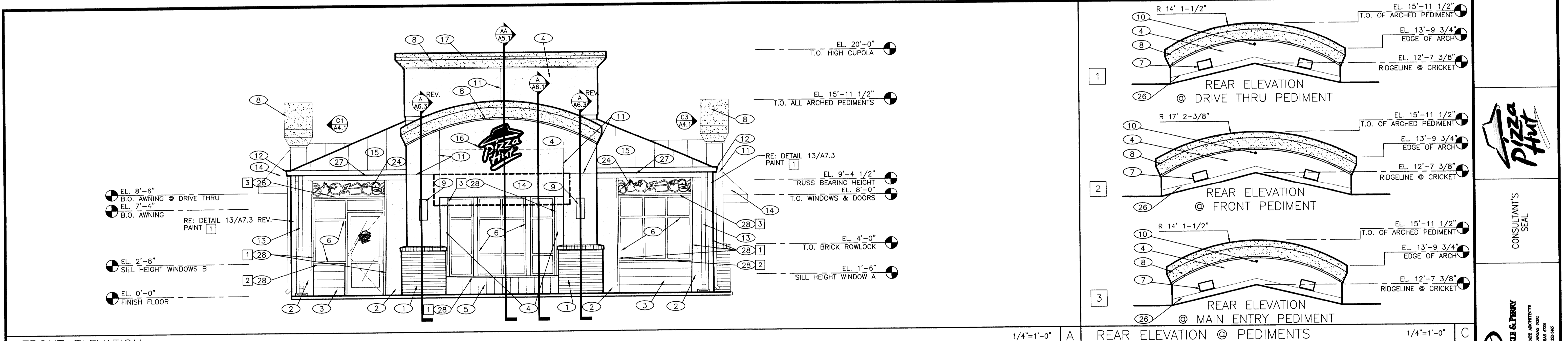
McCOUGHE WANSKIE & PERRY
ARCHITECTS - LANDSCAPE ARCHITECTS
12025 FREEDOM DRIVE
CHARLOTTE, NC 28225
TEL: 704-581-1100
FAX: 704-581-1101

SHEET TITLE: SITE PLAN
ADDRESS & SITE NO: 32025 FREEDOM DRIVE
CHARLOTTE, NC

REVISIONS

NO.	DATE	DESCRIPTION
1	04.23.01	ISSUE FOR PLANNING COMMISSION
2	11.10.00	ISSUE FOR OTHER COMENTS

REZONING: 04.23.01
PROJECT NUMBER: MAINPATH P-66MD-00B
PROTOTYPE ISSUE DATE: 11.10.00
PROJECT NUMBER: 301007
SHEET NUMBER: C2.1



EXTERIOR FINISH SCHEDULE				GENERAL NOTES		KEY NOTES	
PRODUCT SCHEDULES	ITEM	MFR.	SURFACE COLOR	COLOR	MISCELLANEOUS	KEY NOTES	KEY NOTES
FACE BRICK METAL ROOFING STOREFRONT					1. SEE SHT. A9.1 "WINDOW TYPE" FOR WINDOW ELEVATIONS.	1. FACE BRICK: SEE PRODUCT SCHEDULE THIS SHEET	16. BUILDING SIGNAGE 4X4 STACK LOGO (16 SQ. FT.): CENTER HORIZONTALLY BETWEEN PEDIMENT COLUMNS AND VERTICALLY FROM TOP OF AWNING AND BOTTOM OF EIFS CORNICE. REFER TO DETAIL 14A/A7.3 FOR PANEL BUTT JOINTS.
AMARULITE	ICS 450 NON-THERMAL	73*	DARK BRONZE	11 HC-21	E.I.F.S.	2. CEMENT SIDING WITH STUCCO TEXTURE ON 1x FURRING. PAINT 1 REFER TO DETAIL 14A/A7.3 FOR PANEL BUTT JOINTS.	17. METAL CAP FLASHING @ HIGH CUPOLA. PAINT 4
EFCD	402	0300	DARK BRONZE	2 HC-26	1. MAINTAIN MIN. 3/4" INSULATION BOARD	3. CEMENT SIDING WITH HORIZONTAL GROOVES @ 8" O.C. PAINT 2	18. WALK-IN COOLER UNIT (TO INCLUDE FLASHING). PAINT 1
KAWNEER	TRIFAB VG 451	350*	DARK BRONZE	2 HC-26	2. APPLY INSULATION BOARD W/ APPROVED ADHESIVE.	4. CEMENT SIDING WITH STUCCO TEXTURE. PAINT 3 U.O.N.	19. COOLER/ FREEZER CONDENSING UNIT. PAINT 1
TUBULETE	14000	STANDARD MEDIUM STILE*	DARK BRONZE	2 HC-26	3. E.I.F.S. FINISH SHALL BE EQUAL TO DRYWAT FREESTYLE.	5. CEMENT SIDING WITH 8" VERTICAL GROOVES. PAINT 2	20. H.M. DOOR AND FRAME. PAINT 1
U.S. ALUMINUM	451	400*	DARK BRONZE	3 HC-27	4. BACKWRAP ALL EDGE CONDITIONS.	6. ALUMINUM WINDOW WITH CLEAR INSULATING GLASS	21. SCUPPER. PAINT 3
VSTAWALL	FG3000	375*	DARK BRONZE	4	5. MESH OVERLAPS SHALL NOT COMBIDE WITH INSULATION BOARD JOINTS.	7. ROOF LIGHT. WALL MOUNT ABOVE METAL COUNTERFLASHING	22. MECHANICAL EQUIPMENT. PAINT 3
* WITH 10" TO 12" BOTTOM RAIL TO MEET ACCESSIBILITY REQUIREMENTS						8. EIFS CORNICE. PAINT 4	23. VEGETABLE GRAPHICS WALL PANEL. SEE DETAIL 5/A7.2 PAINT 3
SEALERS (REFER TO SPECIFICATION SECTION 07920)					1. SEALANT AT ALL WALL AND ROOF PENETRATIONS.	9. LIGHTING, RE: ELECTRICAL PEDIMENT SCONCES: MOUNT @ 7'0" A.F.F. WALL SCONCES: MOUNT B.O. @ 8'8" A.F.F.	24. METAL BAND BEHIND GUTTER [5]
					2. SEALANT AT ALL WINDOWS AND DOOR FRAMES AT HEAD, SILL AND JAMB.	10. LOUVER EQUAL TO LAMAMCO MODEL CV-2	25. METAL CAP FLASHING @ LOW CUPOLA. PAINT 3
					3. SEALANT AT ALL POINTS WHERE CEMENT BOARD MEETS TRIM OR MOLDING.	11. STUCCO REVEAL JOINT AT CEMENT BOARD. SEE DETAIL 14B/A7.3.	26. PEDIMENT ROOF FLASHING SEE 14/A7.1 FOR DTL.
						12. METAL GUTTER. PAINT 4	27. METAL BAND BEHIND GUTTER [5]
						13. METAL DOWN SPOUT. PAINT 1	28. ROUGH SAWN CEDAR 2x2 WOOD TRIM. [] SEE BLDG. ELEV. FOR COLOR
						14. BACK LIT AWNING AND FRAME SUPPLIED AND INSTALLED BY AWNING VENDOR.	29. 4" DIA. PIPE GUARDPOST. PAINT 1
						15. STANDING SEAM METAL ROOF. SEE PRODUCT SCHEDULE THIS SHEET.	30. ROOF PENETRATION. PAINT 2

CONSULTANT'S SEAL

McCOUGHE WANSKIE & PERRY
ARCHITECTS - LANDSCAPE ARCHITECTS
12025 FREEDOM DRIVE
CHARLOTTE, NC 28225
TEL: 704-581-1100
FAX: 704-581-1101

SHEET TITLE: EXTERIOR ELEVATIONS
ADDRESS & SITE NO: 32025 FREEDOM DRIVE
CHARLOTTE, NC

REVISIONS

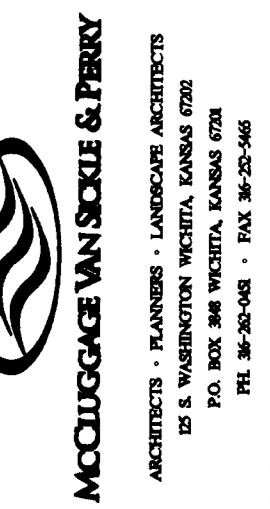
NO.	DATE	DESCRIPTION
1	07.13.01	ISSUE FOR PLANNING COMMISSION
2	11.10.00	ISSUE FOR OTHER COMENTS

REZONING: 07.13.01
PROJECT NUMBER: MAINPATH P-66MD-00B
PROTOTYPE ISSUE DATE: 11.10.00
PROJECT NUMBER: 301007
SHEET NUMBER: A4.1

FILE# 2001-096



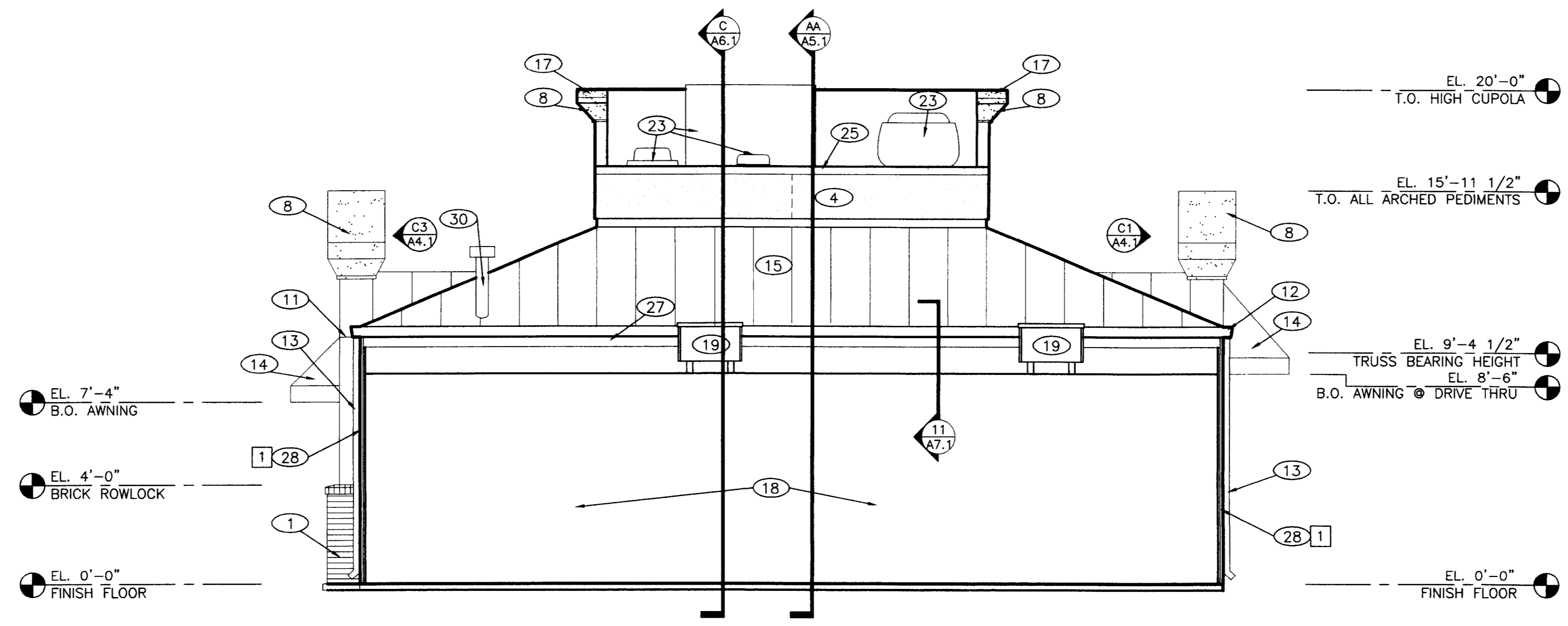
CONSULTANT'S SEAL



McCluggage VanSickle & Perry
ARCHITECTS • PLANNERS • LANDSCAPE ARCHITECTS
20 S. WASHINGTON STREET, KANSAS CITY, MO 64108
TEL. 816-251-0400 • FAX 816-251-5486

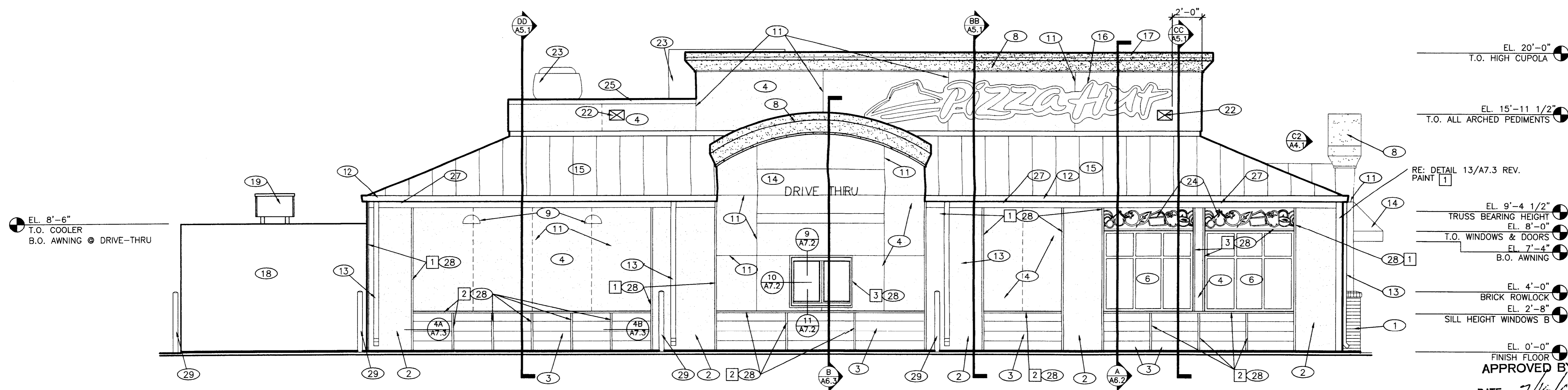
REVISIONS
NO. DATE DESCRIPTION
11.10.00
PROJECT NUMBER
301007
SHEET NUMBER
A4.2

FILE # 2001-098



REAR ELEVATION

1/4"=1'-0" A



LEFT SIDE ELEVATION

1/4"=1'-0" B

EXTERIOR FINISH SCHEDULE

Table with columns: PRODUCT SCHEDULES, ITEM, MFGR., SURFACE COLOR, COLOR. Includes sections for FACE BRICK METAL ROOFING STOREFRONT and EXTERIOR FINISH SCHEDULE.

GENERAL NOTES

- MISCELLANEOUS
1. SEE SHT. A9.1 "WINDOW TYPE" FOR WINDOW ELEVATIONS.
E.I.F.S.
1. MAINTAIN MIN. 3/4" INSULATION BOARD
2. APPLY INSULATION BOARD W/ APPROVED ADHESIVE.
3. E.I.F.S. FINISH SHALL BE EQUAL TO DRYVIT FREESTYLE.
4. BACKWRAP ALL EDGE CONDITIONS.
5. MESH OVERLAPS SHALL NOT COINCIDE WITH INSULATION BOARD JOINTS.
SEALERS (REFER TO SPECIFICATION SECTION 07920)
1. SEALANT AT ALL WALL AND ROOF PENETRATIONS.
2. SEALANT AT ALL WINDOWS AND DOOR FRAMES AT HEAD, SILL AND JAMB.
3. SEALANT AT ALL POINTS WHERE CEMENT BOARD MEETS TRIM OR MOLDING.

KEY NOTES

- 1 FACE BRICK: SEE PRODUCT SCHEDULE THIS SHEET
2 CEMENT SIDING WITH STUCCO TEXTURE ON 1x FURRING. PAINT 1 REFER TO DETAIL 14A/A7.3 FOR PANEL BUTT JOINTS.
3 CEMENT SIDING WITH HORIZONTAL GROOVES @ 8" O.C. PAINT 2
4 CEMENT SIDING WITH STUCCO TEXTURE. PAINT 3 U.O.N. REFER TO DETAIL 14A/A7.3 FOR PANEL BUTT JOINTS (SHOWN DASHED), REFER TO DETAIL 14B/A7.3 FOR STUCCO REVEAL JOINTS (SHOWN SOLID).
5 CEMENT SIDING WITH 8" VERTICAL GROOVES. PAINT 2
6 ALUMINUM WINDOW WITH CLEAR INSULATING GLASS
7 ROOF LIGHT. WALL MOUNT ABOVE METAL COUNTERFLASHING
8 EIFS CORNICE. PAINT 4
9 LIGHTING. RE: ELECTRICAL PEDIMENT SCONCES: MOUNT @ 7'0" A.F.F. WALL SCONCES: MOUNT B.O. @ 8'6" A.F.F.
10 LOUVER EQUAL TO LAMANO MODEL CV-2
11 STUCCO REVEAL JOINT AT CEMENT BOARD. SEE DETAIL 14B/A7.3.
12 METAL GUTTER. PAINT 4
13 METAL DOWN SPOUT. PAINT 1
14 BACK LIT AWNING AND FRAME SUPPLIED AND INSTALLED BY AWNING VENDOR.
15 STANDING SEAM METAL ROOF. SEE PRODUCT SCHEDULE THIS SHEET.
16 BUILDING SIGNAGE 4X4 STACK LOGO (16 SQ. FT.): CENTER HORIZONTALLY BETWEEN PEDIMENT COLUMNS AND VERTICALLY FROM TOP OF AWNING AND BOTTOM OF EIFS CORNICE. CH-60 LOGO (47.5 SQ. FT.): ALIGN HORIZONTALLY 2' 0" FROM FRONT EDGE OF CUPOLA AND CENTER VERTICALLY FROM REGLET/STANDING SEAM METAL ROOF AND BOTTOM OF EIFS CORNICE.
17 METAL CAP FLASHING @ HIGH CUPOLA. PAINT 4
18 WALK-IN COOLER UNIT (TO INCLUDE FLASHING). PAINT 1
19 COOLER/ FREEZER CONDENSING UNIT. PAINT 1
20 ELECTRICAL METER AND MDP. PAINT 1
21 H.M. DOOR AND FRAME. PAINT 1
22 SCUPPER. PAINT 3
23 MECHANICAL EQUIPMENT. PAINT 3
24 VEGETABLE GRAPHICS WALL PANEL. SEE DETAIL 5/A7.2 PAINT 3
25 METAL CAP FLASHING @ LOW CUPOLA. PAINT 3
26 PEDIMENT ROOF FLASHING SEE 14/A7.1 FOR DTL.
27 METAL BAND BEHIND GUTTER 5
28 ROUGH SAWN CEDAR 2x2 WOOD TRIM. SEE BLDG. ELEV. FOR COLOR
29 4" DIA. PIPE GUARDPOST. PAINT 1
30 ROOF PENETRATION. PAINT 4

APPROVED BY CITY COUNCIL
DATE 7/16/01

P:\MAINPATH\301007\CD\A4.2\A4-2.dwg modified by Dirk at Jul 30, 2001 - 10:46am