

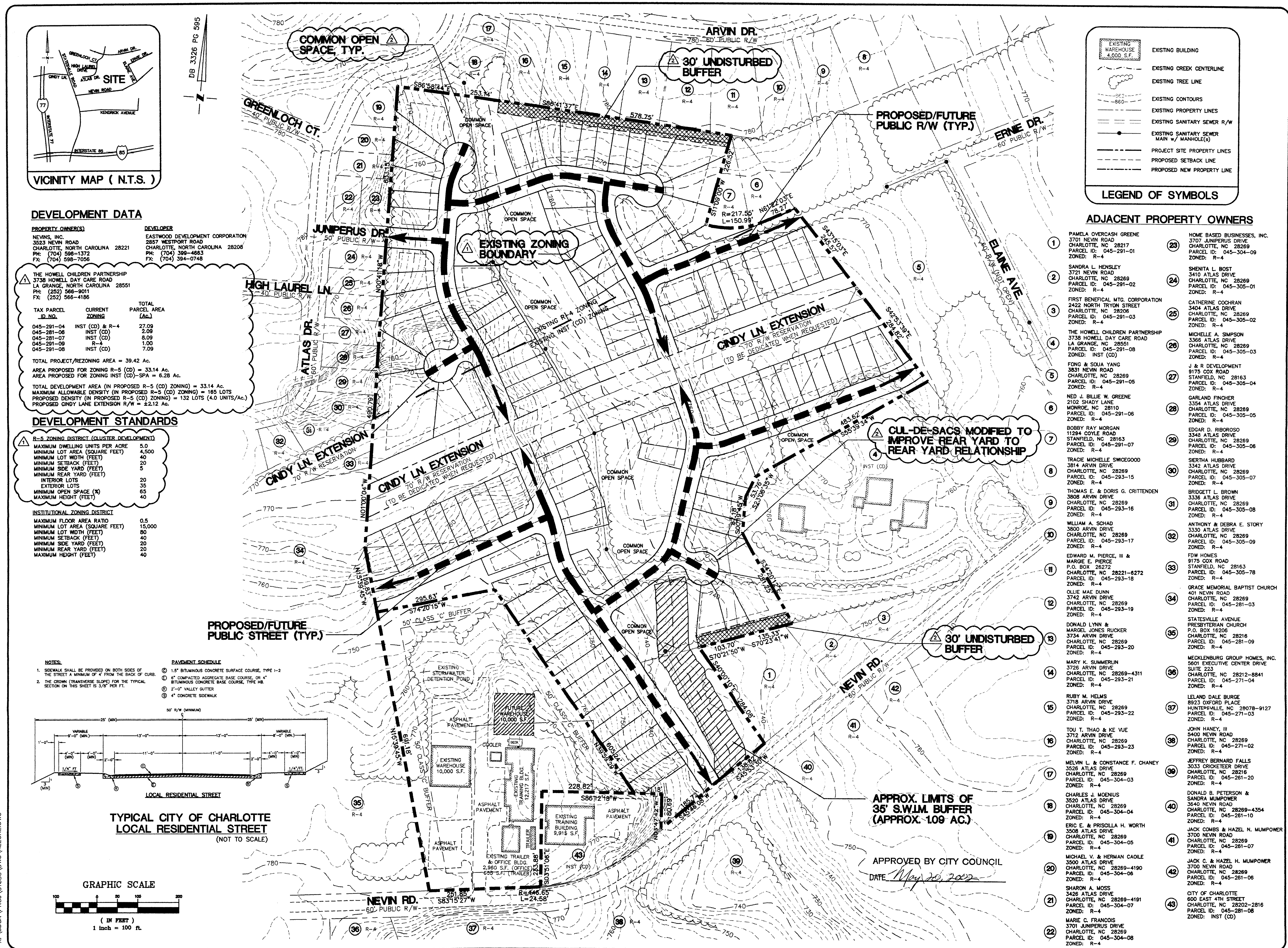
REVISIONS	DATE
PLANNING COMMENTS	3/19/02
PLANNING COMMENTS	4/30/02
PLANNING COMMENTS	5/20/02

EASTOVER
Engineering & Surveying, Inc.
Engineers - Surveyors - Planners
600 Tomra Centre Boulevard, Suite 305
Fayetteville, North Carolina 28404
Ph: (704) 888-5077
Fx: (704) 888-5022

TECHNICAL DATA SHEET

NEVIN ROAD PROPERTY PETITION NO. 2002-41 FOR PUBLIC HEARING
"The Area" - 100' wide
EASTWOOD DEVELOPMENT
CITY OF CHARLOTTE, MECKLENBURG COUNTY, N.C.

DRAWN BY: DMR
REVIEWED BY: DMR
DATE: 1/28/02
SCALE: 1"=100'
JOB NO.: 01030
SHEET NO. C1
OF C2 SHEETS



REVISIONS	DATE
PLANNING COMMENTS	3/19/02
PLANNING COMMENTS	4/30/02
PLANNING COMMENTS	5/20/02

EASTOVER
Engineering & Surveying, Inc.
Engineers - Surveyors - Planners
600 Tomra Centre Boulevard, Suite 305
Fayetteville, North Carolina 28404
Ph: (704) 888-5077
Fx: (704) 888-5022

ILLUSTRATIVE SITE PLAN

NEVIN ROAD PROPERTY PETITION NO. 2002-41 FOR PUBLIC HEARING
"The Area" - 100' wide
EASTWOOD DEVELOPMENT
CITY OF CHARLOTTE, MECKLENBURG COUNTY, N.C.

DRAWN BY: DMR
REVIEWED BY: DMR
DATE: 1/28/02
SCALE: 1"=100'
JOB NO.: 01030
SHEET NO. C2
OF C2 SHEETS