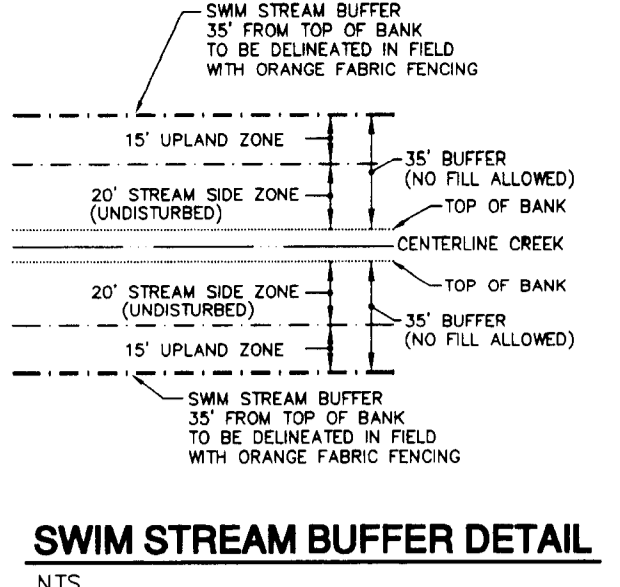
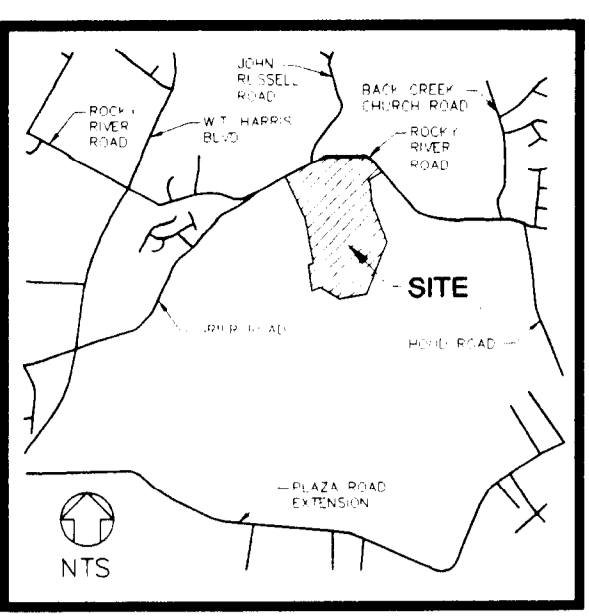


VICINITY MAP



BOUNDARY CURVE TABLE

Table with columns: CURVE LENGTH, RADIUS, TANGENT, CHORD, CHORD BEARING, DELTA.

BOUNDARY LINE TABLE

Table with columns: LINE, BEARING, DISTANCE.

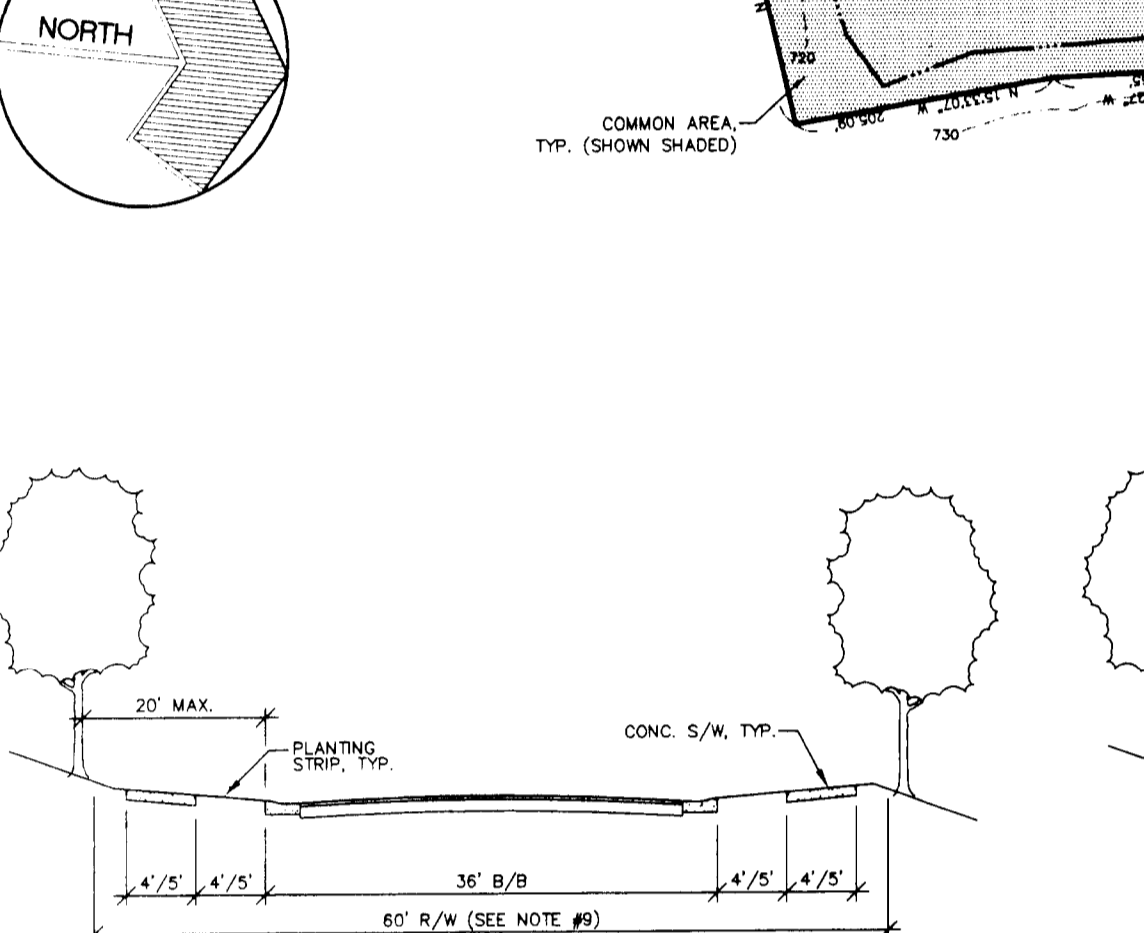
PETITIONER

DEVELOPER: CENTY HOMES, 1500 W CENTER DR, SUITE #100, CHARLOTTE, NC 28217

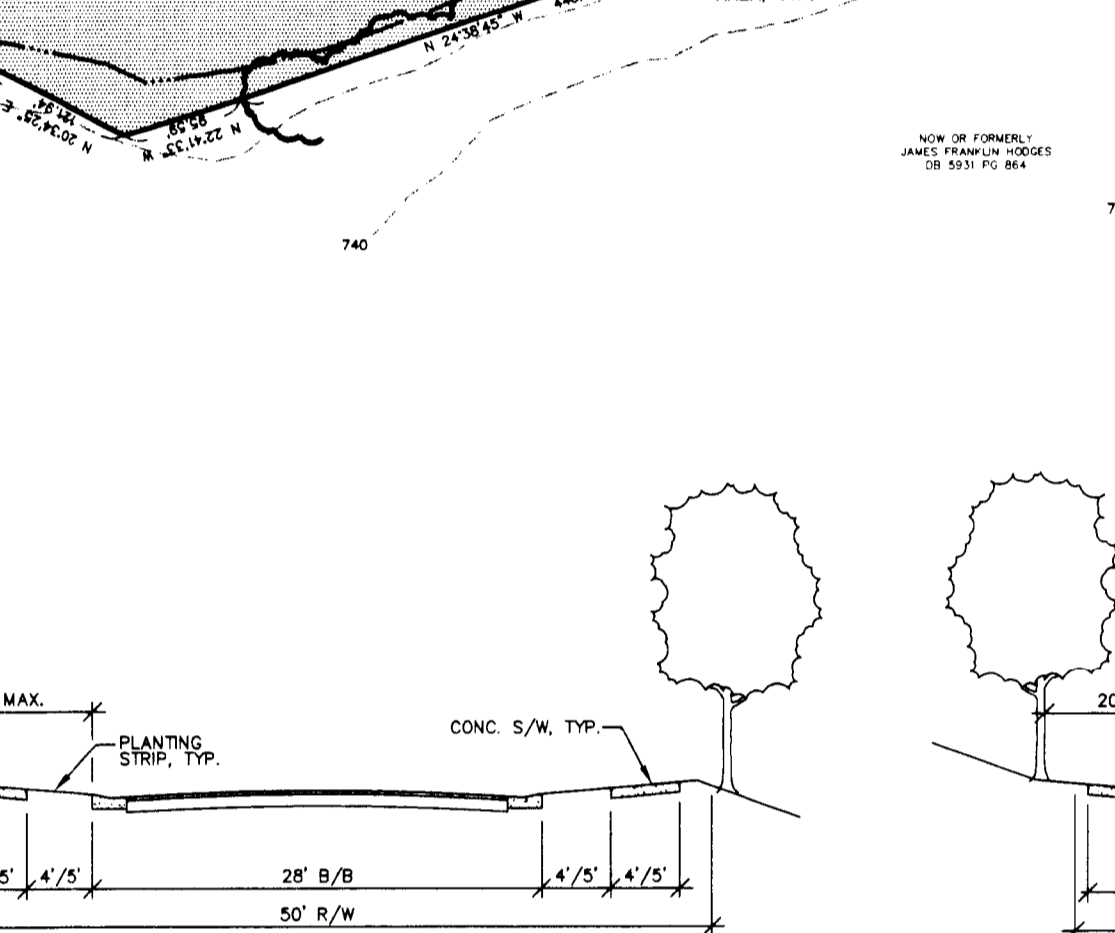
DEVELOPMENT NOTES

- 1. DEVELOPMENT OF THIS SITE SHALL BE IN ACCORDANCE WITH THE STANDARDS DERIVED ON THE SITE PLAN AND THE STANDARDS OF THE CITY OF CHARLOTTE ZONING ORDINANCE...

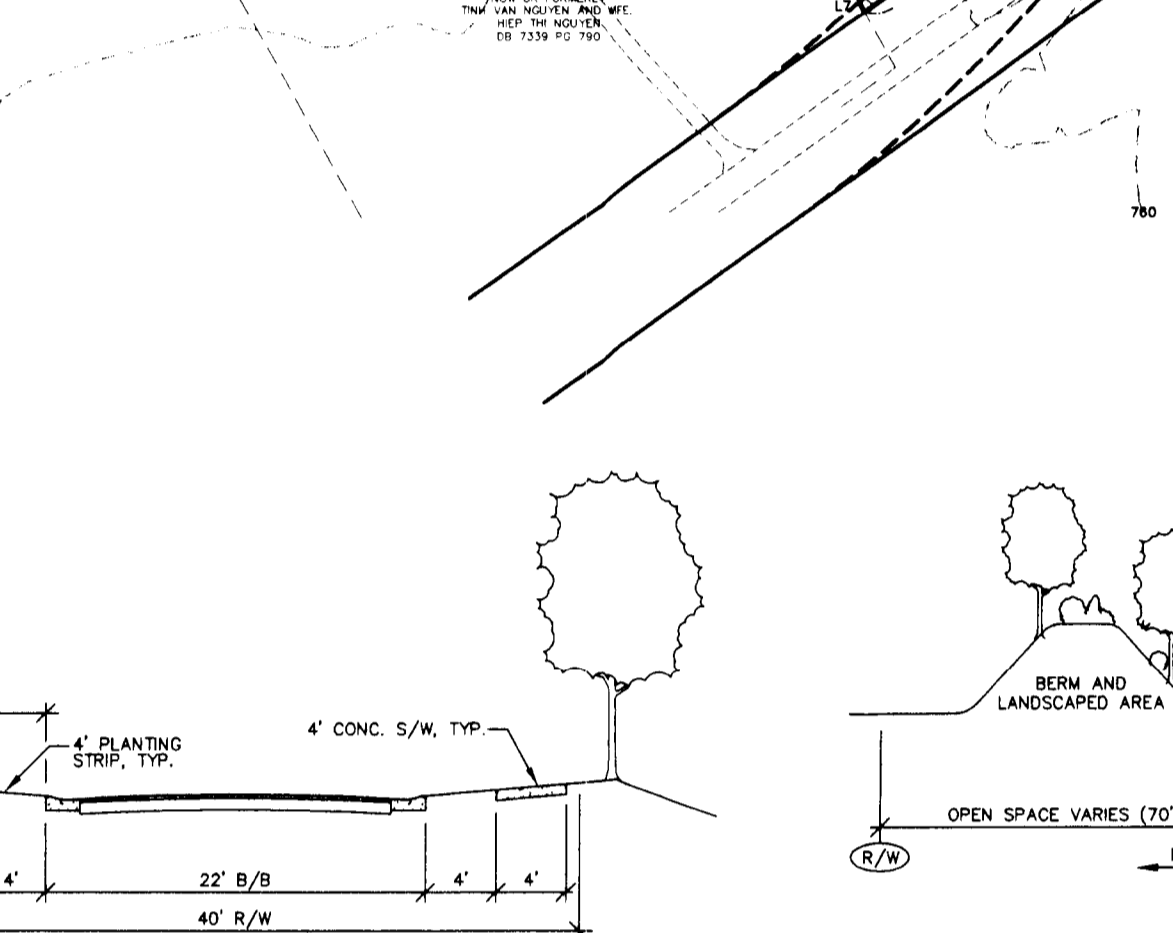
SECTIONS 'A', 'A1-A1'



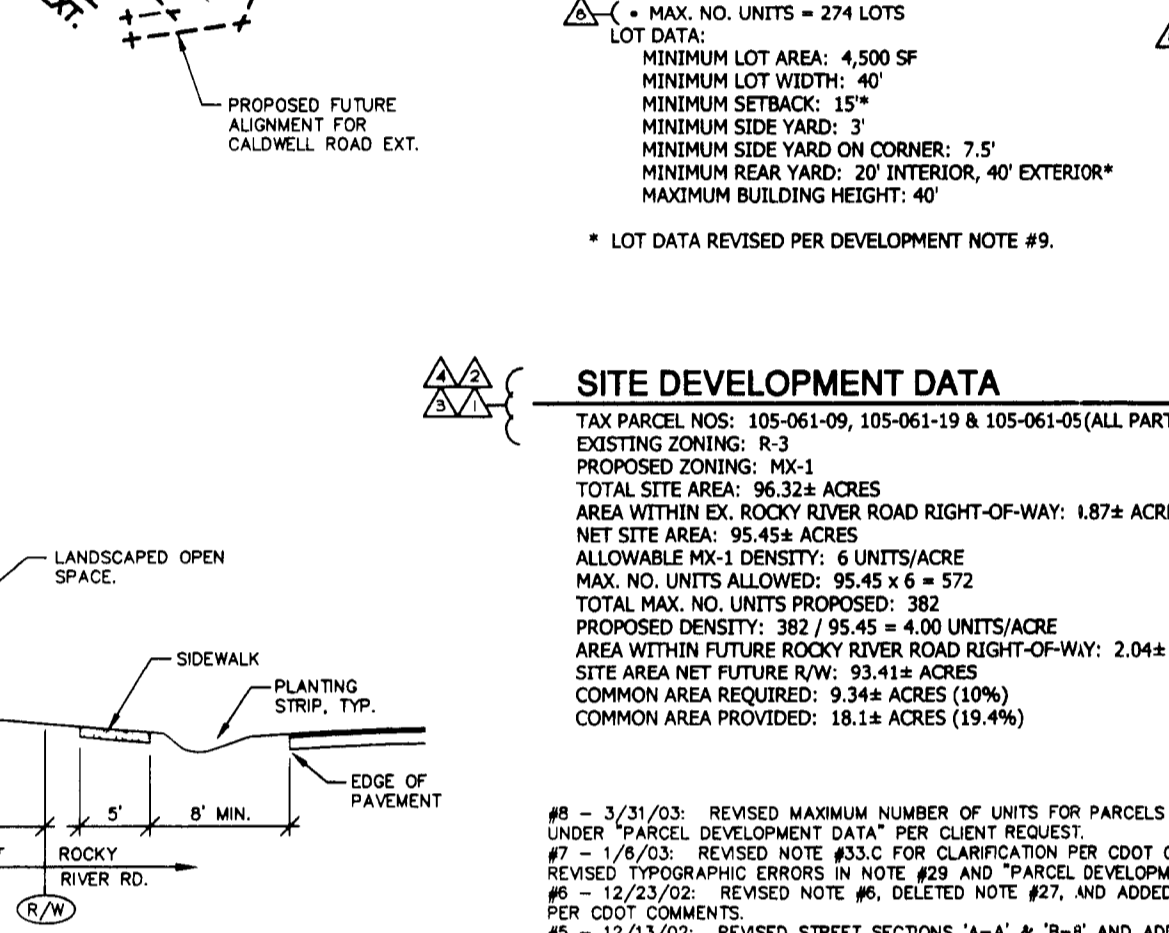
SECTIONS 'B', 'B1-B1'



SECTION 'C', 'C'



TYP. SECTION ALONG ROCKY RIVER ROAD



PARCEL DEVELOPMENT DATA

Table detailing development data for Parcel A (74.93 AC), Parcel B (18.48 AC), and Parcel C (18.48 AC).

SITE DEVELOPMENT DATA

Table detailing site development data including zoning, area, and density.

FOR PUBLIC HEARING

Hodges Property Rocky River Road

TECHNICAL DATA SHEET for REZONING PETITION #02-075

Table with project information: Job No. 20102, Date 4/5/02, Scale 1"=150', etc.

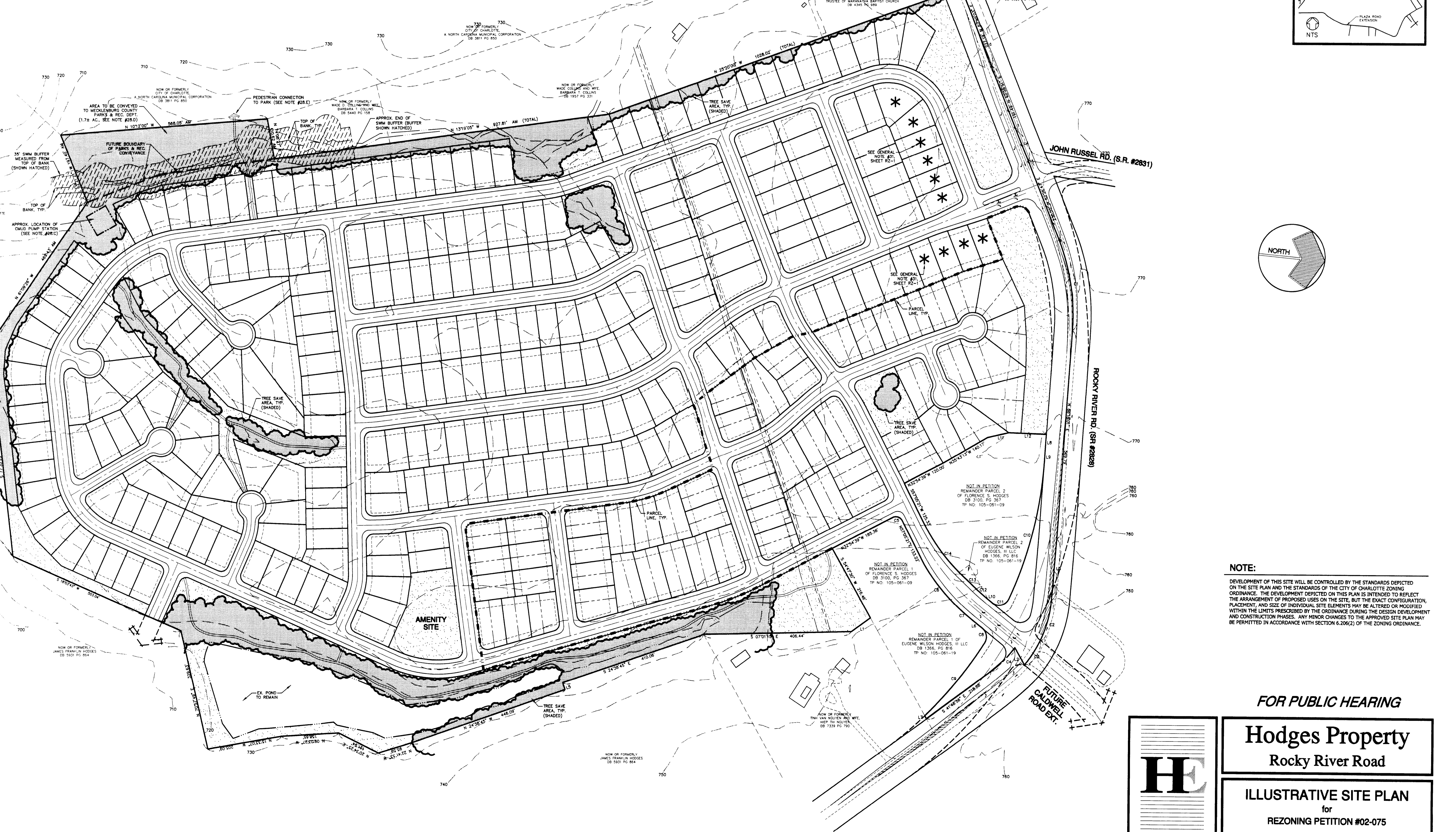
REVISION SUMMARY

BOUNDARY CURVE TABLE

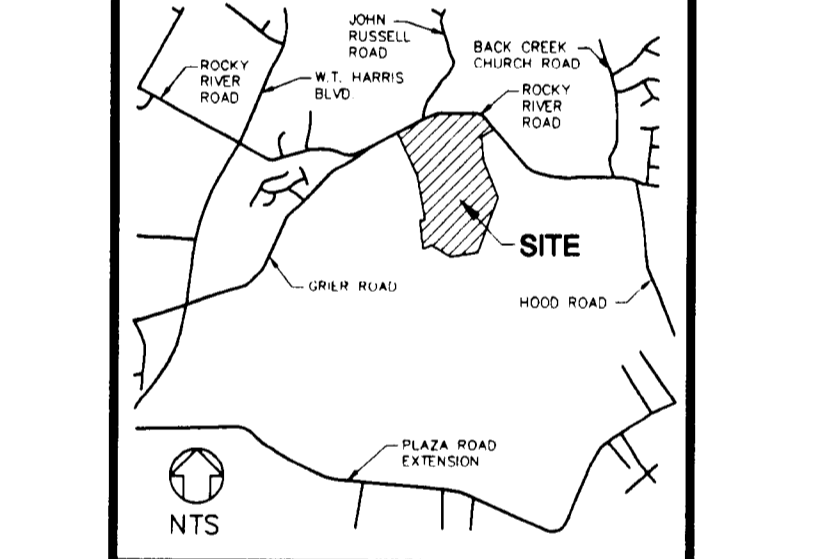
Table with columns: CURVE LENGTH, RADIUS, TANGENT, CHORD, CHORD BEARING, DELTA.

BOUNDARY LINE TABLE

Table with columns: LINE, BEARING, DISTANCE.



VICINITY MAP



NOTE: DEVELOPMENT OF THIS SITE WILL BE CONTROLLED BY THE STANDARDS DERIVED ON THE SITE PLAN AND THE STANDARDS OF THE CITY OF CHARLOTTE ZONING ORDINANCE...

FOR PUBLIC HEARING

Hodges Property Rocky River Road

ILLUSTRATIVE SITE PLAN for REZONING PETITION #02-075

Table with project information: Job No. 20102, Date 4/5/02, Scale 1"=120', etc.

REVISION SUMMARY



