



* 0 0 B R E A K 0 0 *



**ADVANCED
IMAGING
SYSTEMS**

www.aisimc.com

An Information
Management Company

City of Charlotte – Planning Dept. Scanning Rezoning Files

Petition # _____

Document type:

- Applications
- Correspondence
- Department Comments
- Land Use Consistency
 - Mail Info
 - Mapping
 - Other
- Site Plans



* 0 0 B R E A K 0 0 *

Petition #: 2002-100

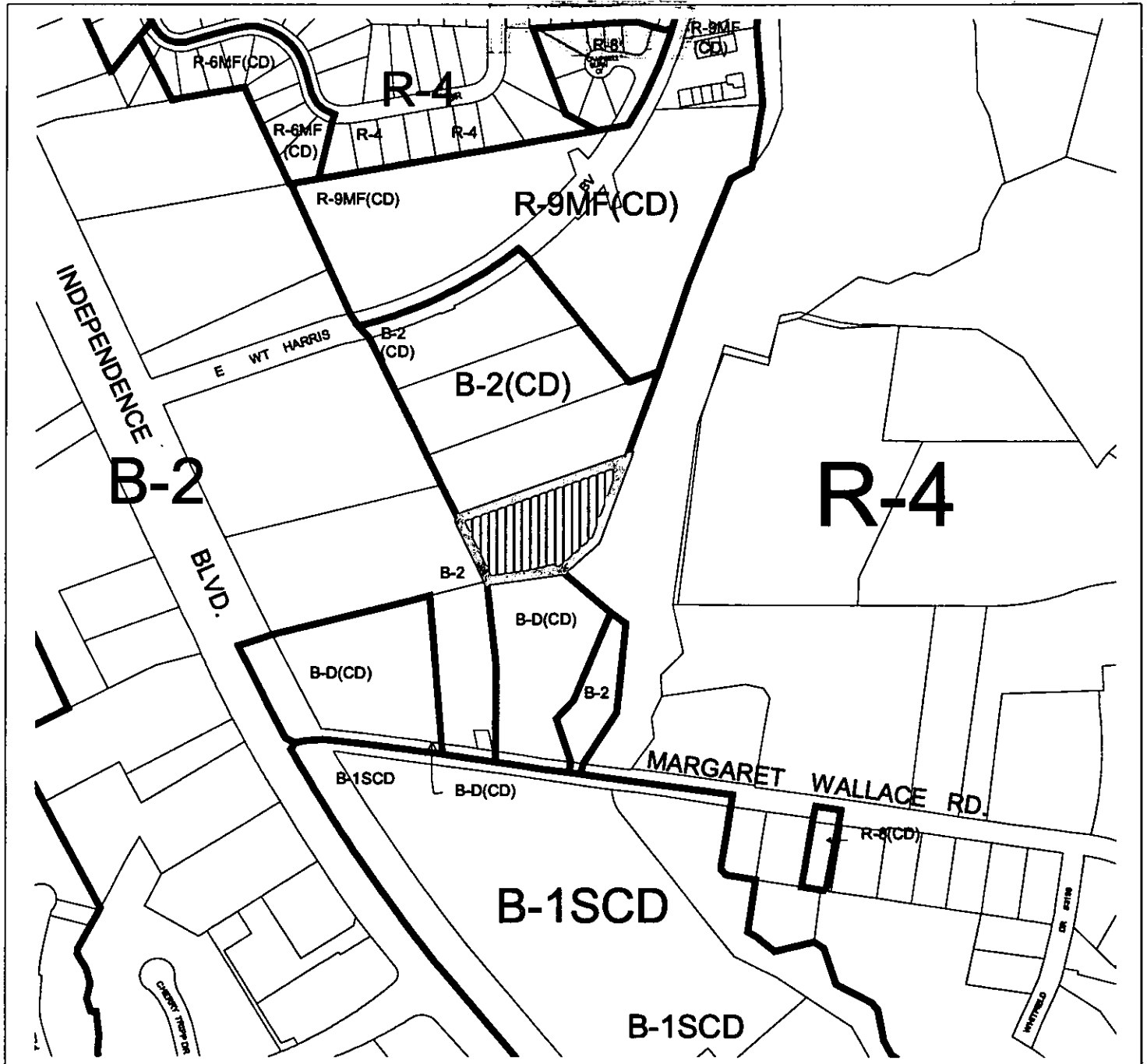
Petitioner: Wilburn Auto Body Shop, Inc.

Hearing Date: September 17, 2002

Zoning Classification (Existing): BD(CD)

Zoning Classification (Requested): B-2(CD)

Acresage & Location Approximately 2 acres located south of East W. T. Harris Boulevard and north of Margaret Wallace Road, east of Independence Boulevard



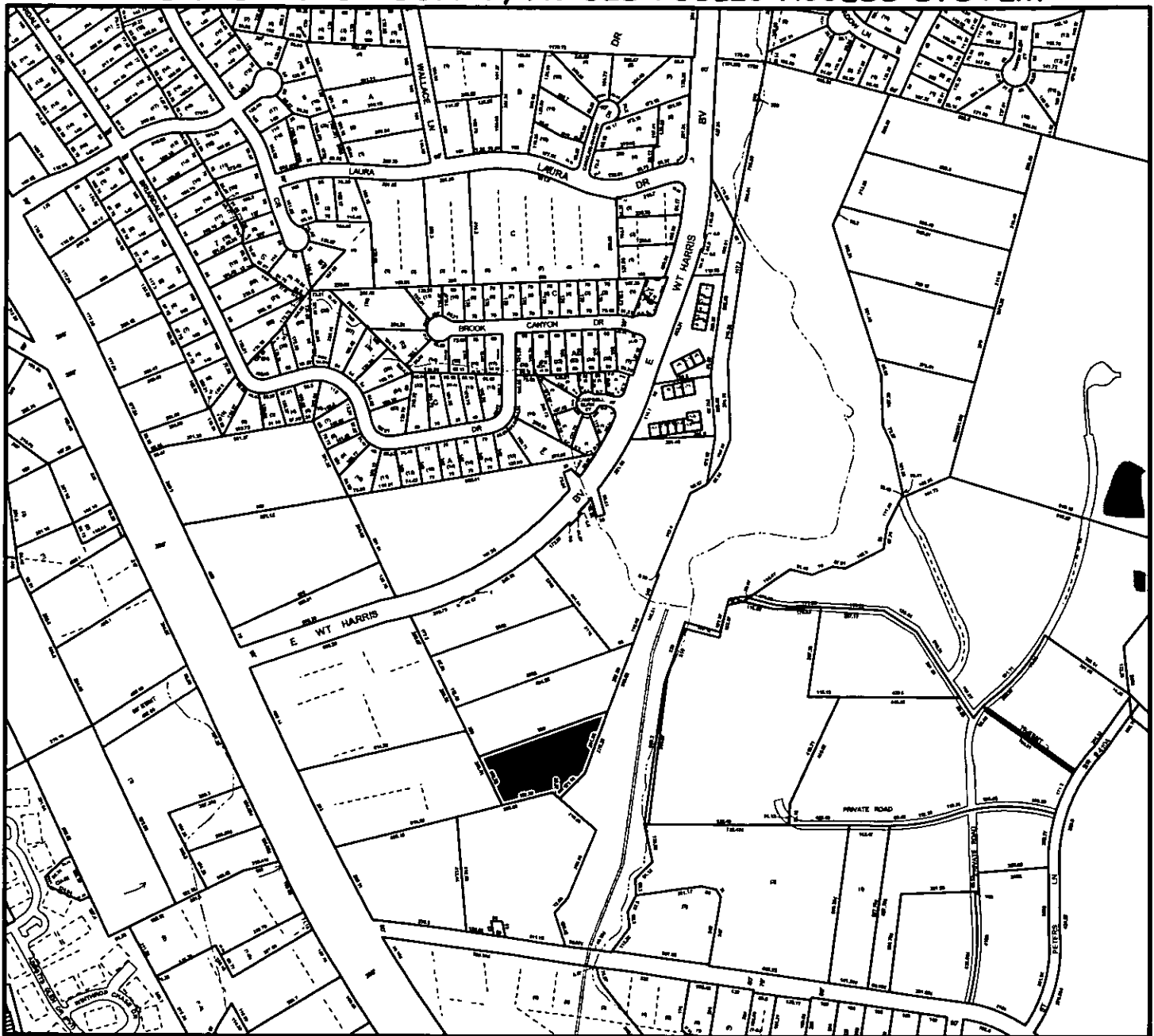
Zoning Map #(s):

138

Map Legend

	ETU		Floodplain/Map
	Alotment/Map		County Line
	Waterway		City Limit/Map
	Historic District		

MECKLENBURG COUNTY, NC GIS PUBLIC ACCESS SYSTEM

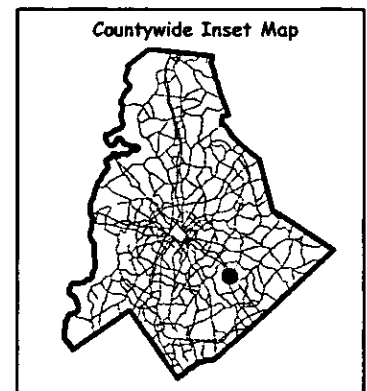
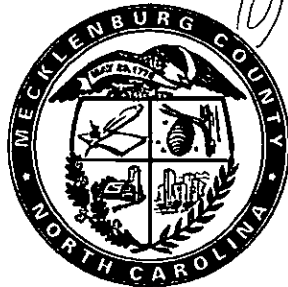


Tax Parcel-Id#s Selected: , 16515102, 16515108, 16515111, 16515113, 16515115, 16515121, 16515123, 16515136, 16515137, 16515138, 16515146 Tax Book & Page Selected: N/A

02-100

LEGEND

- County Boundary
- Rivers/Creeks/Streams
- Railroad ROW
- Water Bodies



Scale : 1 Inch = 100 Feet

Map Created on Monday, July 8, 2002 01:08 PM

This map is prepared for the inventory of real property within Mecklenburg County and is compiled from recorded deeds, plats, tax maps, surveys, planimetric maps, and other public records and data. Users of this map are hereby notified that the aforementioned public primary information sources should be consulted for verification. Mecklenburg County and its mapping contractors assume no legal responsibility for the information contained herein.