



* 0 0 B R E A K 0 0 *



**ADVANCED
IMAGING
SYSTEMS**

www.aisimc.com

An Information
Management Company

City of Charlotte – Planning Dept. Scanning Rezoning Files

Petition # _____

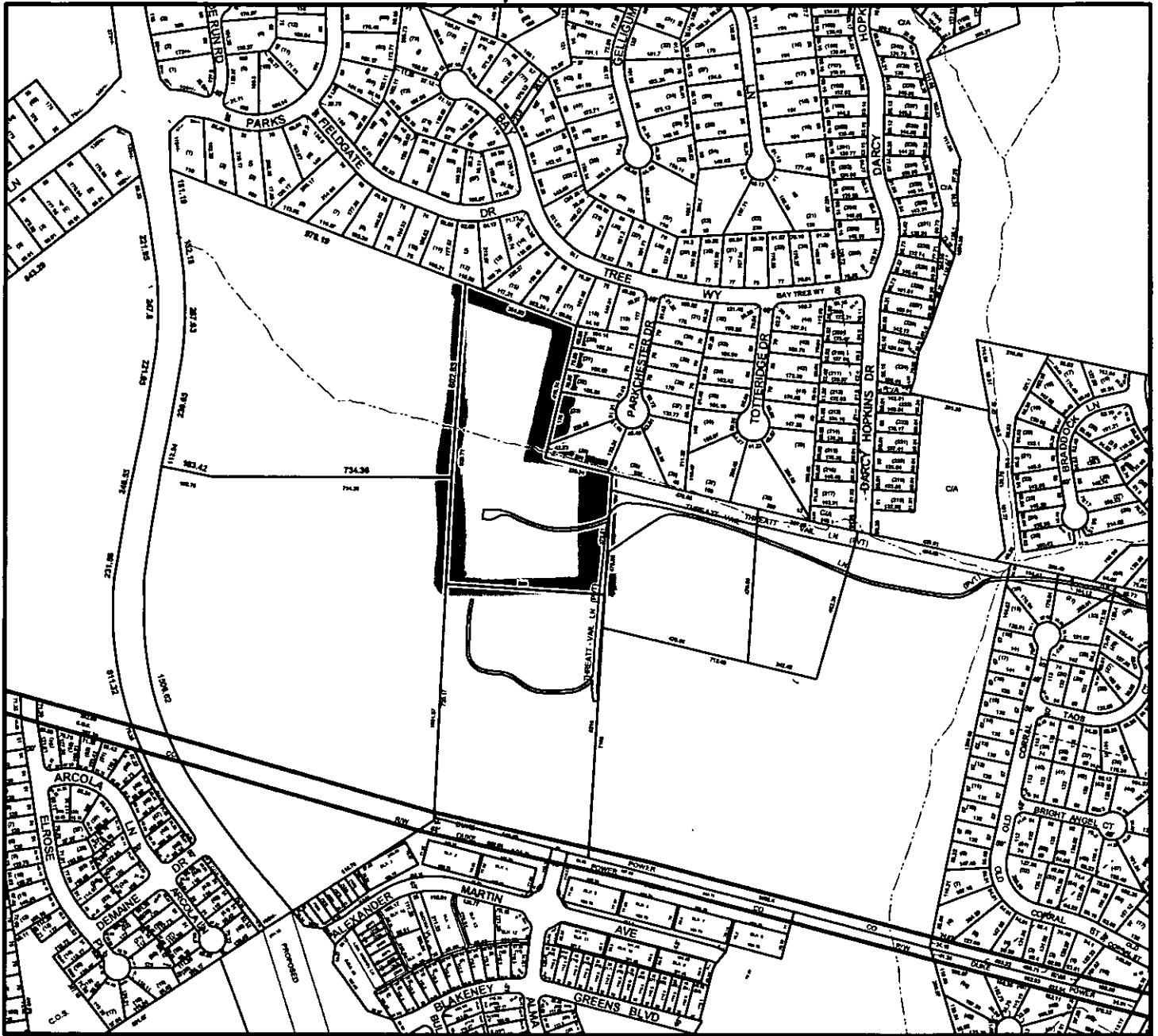
Document type:

- Applications
- Correspondence
- Department Comments
- Land Use Consistency
 - Mail Info
 - Mapping
 - Other
- Site Plans



* 0 0 B R E A K 0 0 *

MECKLENBURG COUNTY, NC GIS PUBLIC ACCESS SYSTEM



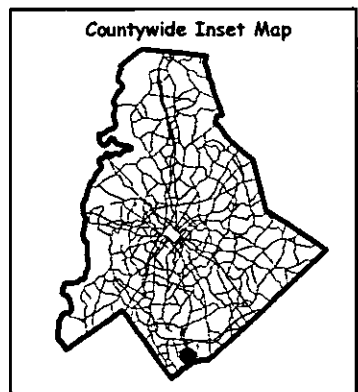
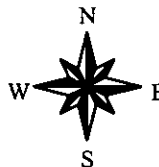
Tax Parcel-Id#s Selected: See Tax Information Report for List of Parcel-Id#s

Tax Book & Page Selected: N/A

02-101

LEGEND

- County Boundary
- Rivers/Creeks/Streams
- Railroad ROW
- Water Bodies



Scale : 1 Inch = 500 Feet

Map Created on Monday, July 8, 2002 01:55 PM

This map is prepared for the inventory of real property within Mecklenburg County and is compiled from recorded deeds, plats, tax maps, surveys, planimetric maps, and other public records and data. Users of this map are hereby notified that the aforementioned public primary information sources should be consulted for verification. Mecklenburg County and its mapping contractors assume no legal responsibility for the information contained herein.

Petition #: 2002-101

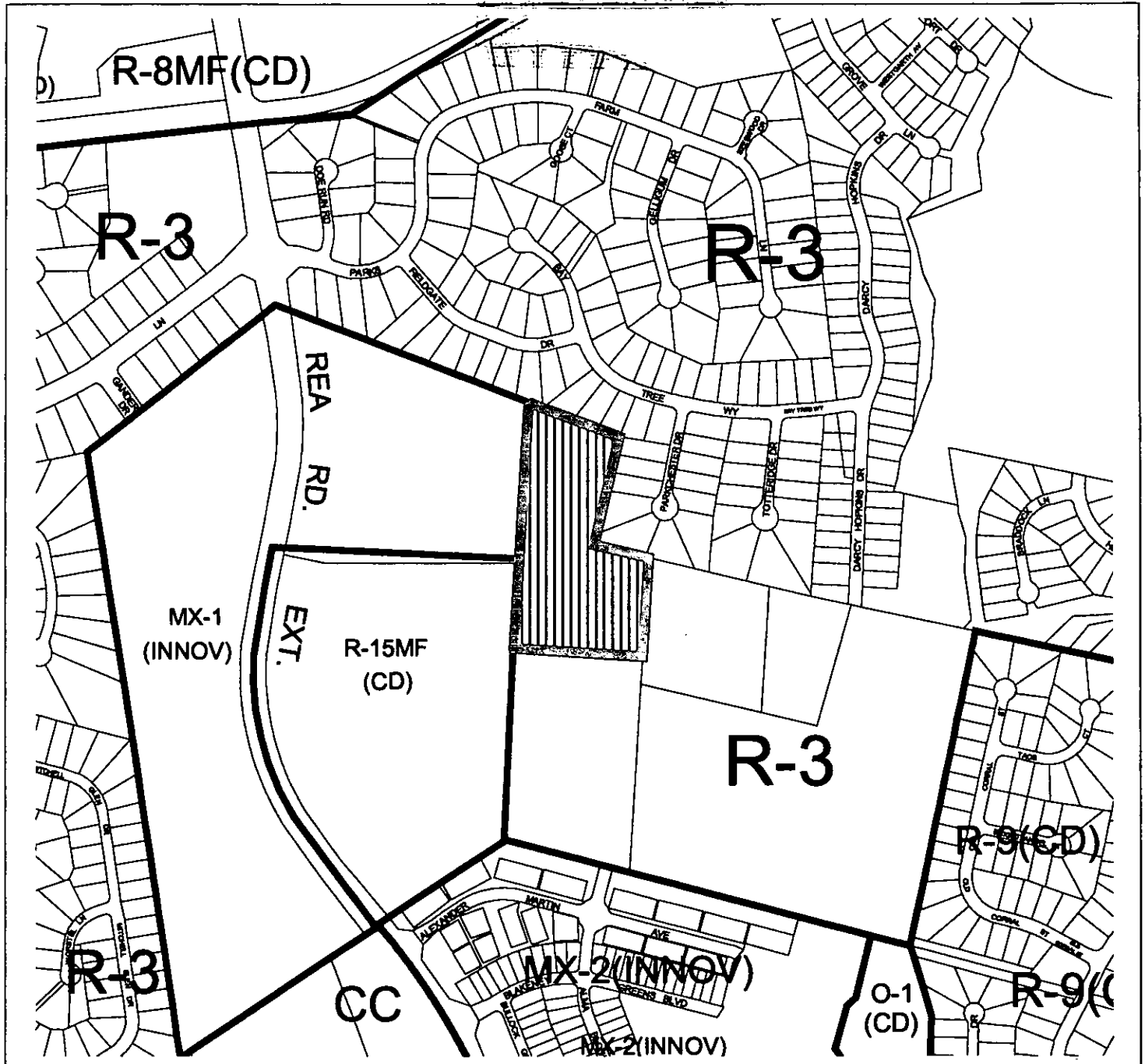
Petitioner: Pulte Homes Corporation

Hearing Date: September 17, 2002

Zoning Classification (Existing): R-3

Zoning Classification (Requested): R-5(CD)

Acresage & Location Approximately 8 acres located east of Rea Road and south of Parks Farm Lane



Zoning Map #(s);

181

Map Legend

	RTU		Pond/Inlet/Up
	Alms/Shop		County Line
	Warehouse		City Limit(s)
	Historic District		