



* 0 0 B R E A K 0 0 *



www.aisimc.com

**ADVANCED
IMAGING
SYSTEMS**

An Information
Management Company

City of Charlotte – Planning Dept. Scanning Rezoning Files

Petition # _____

Document type:

- Applications
- Correspondence
- Department Comments
- Land Use Consistency
 - Mail Info
 - Mapping
 - Other
- Site Plans



* 0 0 B R E A K 0 0 *

Petition #: **2002-113**

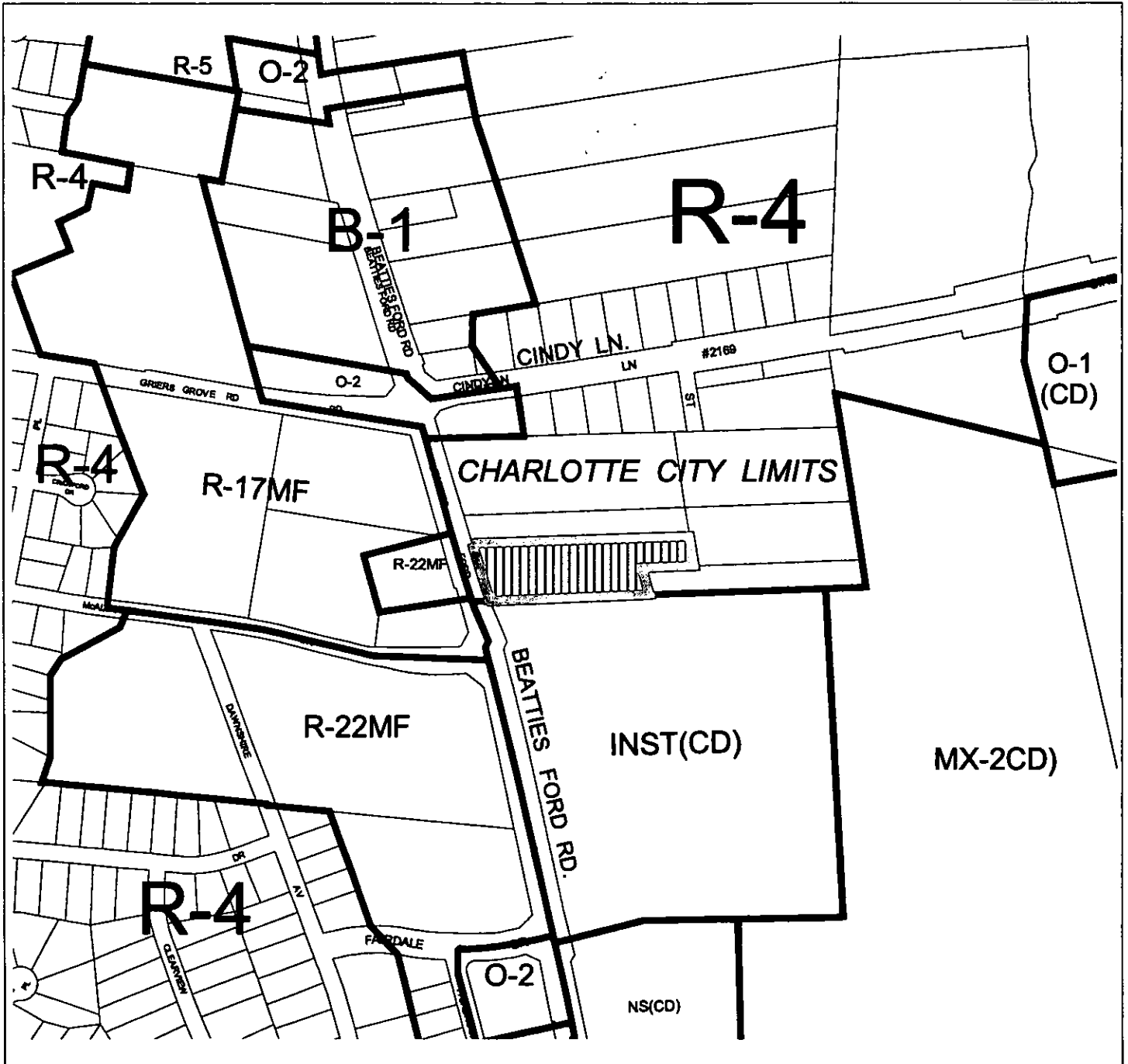
Petitioner: Robert L. Bolton

Hearing Date: October 23, 2002

Zoning Classification (Existing): R-4

Zoning Classification (Requested): U-I(CD)

Acresage & Location Approximately 2.14 acres located on the east side of Beatties Ford Road, south of Cindy Lane



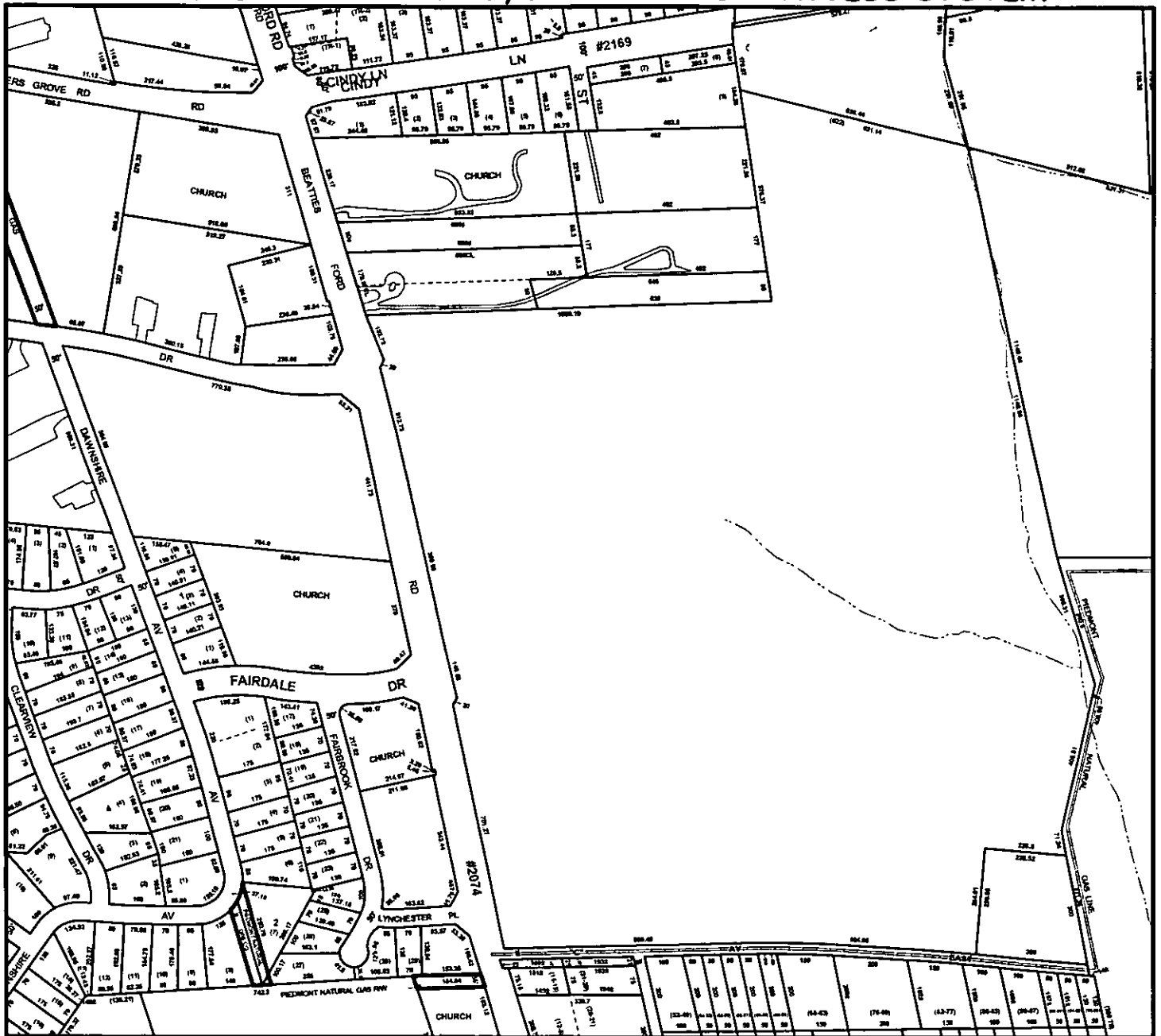
Zoning Map #(s);

69

Map Legend

	ETJ		Floodplain
	Airmass		County Line
	Watershed		City Limits
	Historic District		

MECKLENBURG COUNTY, NC GIS PUBLIC ACCESS SYSTEM



Tax Parcel-Id's Selected: 03914207, 03914315, 03914316, 03914318, 03914319, 04105104, 04105105, 04105106, 04105113, 04105114, 04105115, 04105116
 Book & Page Selected: N/A

LEGEND

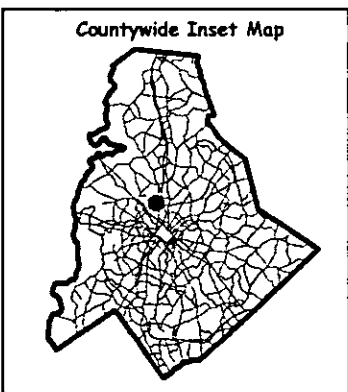
- County Boundary
- Rivers/Creeks/Streams
- Railroad ROW
- Water Bodies
- Jurisdictions**
- County Charlotte
- Cornelius
- Davidson
- Huntersville
- Matthews
- Mint Hill
- Pineville



Boal fern



02-113



Scale : 1 Inch = 100 Feet
 Map Created on Thursday, August 1, 2002 11:22 AM

This map is prepared for the inventory of real property within Mecklenburg County and is compiled from recorded deeds, plats, tax maps, surveys, planimetric maps, and other public records and data. Users of this map are hereby notified that the aforementioned public primary information sources should be consulted for verification. Mecklenburg County and its mapping contractors assume no legal responsibility for the information contained herein.